

Image may be representation.
See specifications for product details.



ADA4891-4ARUZ-R7

Manufacturer Part Number	ADA4891-4ARUZ-R7
Manufacturer	Analog Devices, Inc.
Allelco Part Number	32D-ADA4891-4ARUZ-R7
ECAD Model	PCB Symbol, Footprint & 3D Mode
Parts Description	IC CMOS 4 CIRCUIT 14TSSOP
Package	14-TSSOP (0.173", 4.40mm Width)
Data sheet	ADA4891-1/ADA4891-2/ADA4891-3/ADA4891-4.pdf
RoHs Status	ROHS3 Compliant

Get a Quote

ADA4891-4ARUZ-R7 - Analog Devices Inc..New Original in Stock. Download Linear Technology ADA4891-4ARUZ-R7 datasheet/specifications on AllelcoElec.com.
Request a quote for ADA4891-4ARUZ-R7, please send us email: info@allelco.com

Specifications

ADA4891-4ARUZ-R7 Tech Specifications
ADA4891-4ARUZ-R7 - Analog Devices Inc. technical specifications, attributes, parameters

Product Attribute	Attribute Value	Product Attribute	Attribute Value
Manufacturer	Analog Devices, Inc.	Operating Temperature	-40°C ~ 125°C
Voltage - Supply Span (Min)	2.7 V	Number of Circuits	4
Voltage - Supply Span (Max)	5.5 V	Mounting Type	Surface Mount
Voltage - Input Offset	2.5 mV	Gain Bandwidth Product	105 MHz
Supplier Device Package	14-TSSOP	Current - Supply	4.4mA (x4 Channels)
Slew Rate	210V/μs	Current - Output / Channel	125 mA
Series	-	Current - Input Bias	2 pA
Package / Case	14-TSSOP (0.173", 4.40mm Width)	Base Product Number	ADA4891
Package	Tape & Reel (TR)	Amplifier Type	CMOS
Output Type	Rail-to-Rail	-3db Bandwidth	220 MHz

Parts with Similar Specifications

The three parts on the right have similar specifications to Analog Devices Inc. ADA4891-4ARUZ-R7

Product Attribute				
Part Number	ADA4891-4ARUZ-R7	ADA4891-2ARMZ-R7	ADA4891-4ARUZ	ADA4891-2ARZ-RL
Manufacturer	Analog Devices Inc.	Analog Devices Inc.	Analog Devices Inc.	Analog Devices Inc.
Mounting Type	Surface Mount	Surface Mount	Surface Mount	Surface Mount
Voltage - Supply Span (Min)	2.7 V	2.7 V	2.7 V	2.7 V
Amplifier Type	CMOS	CMOS	CMOS	CMOS
Supplier Device Package	14-TSSOP	8-MSOP	14-TSSOP	8-SOIC
Package / Case	14-TSSOP (0.173", 4.40mm Width)	8-TSSOP, 8-MSOP (0.118", 3.00mm Width)	14-TSSOP (0.173", 4.40mm Width)	8-SOIC (0.154", 3.90mm Width)
Slew Rate	210V/μs	210V/μs	210V/μs	210V/μs
Current - Output / Channel	125 mA	125 mA	125 mA	125 mA
Voltage - Input Offset	2.5 mV	2.5 mV	2.5 mV	2.5 mV
-3db Bandwidth	220 MHz	90 MHz	220 MHz	90 MHz
Current - Input Bias	2 pA	2 pA	2 pA	2 pA
Package	Tape & Reel (TR)	Tape & Reel (TR)	Tube	Tape & Reel (TR)
Operating Temperature	-40°C ~ 125°C	-40°C ~ 125°C	-40°C ~ 125°C	-40°C ~ 125°C
Series	-	-	-	-
Output Type	Rail-to-Rail	Rail-to-Rail	Rail-to-Rail	Rail-to-Rail
Gain Bandwidth Product	105 MHz	105 MHz	105 MHz	105 MHz
Voltage - Supply Span (Max)	5.5 V	5.5 V	5.5 V	5.5 V
Current - Supply	4.4mA (x4 Channels)	4.4mA (x2 Channels)	4.4mA (x4 Channels)	4.4mA (x2 Channels)
Base Product Number	ADA4891	ADA4891	ADA4891	ADA4891
Number of Circuits	4	2	4	2

ADA4891-4ARUZ-R7 Datasheet PDF

Download ADA4891-4ARUZ-R7 pdf datasheets and Analog Devices Inc. documentation for ADA4891-4ARUZ-R7 - Analog Devices Inc..

Datasheets

[ADA4891-1/ADA4891-2/ADA4891-3/ADA4891-4.pdf](#)

Other Related Documents

[Tape and Reel Packaging.pdf](#)

Customers Also Interested in

Recommended Products



ADA4891-2ARMZ-R7

Analog Devices Inc.
IC CMOS 2 CIRCUIT 8MSOP



ADA4891-4ARUZ

Analog Devices Inc.
IC CMOS 4 CIRCUIT 14TSSOP



ADA4891-2ARZ-RL

Analog Devices Inc.
IC CMOS 2 CIRCUIT 8SOIC



ADA4895-1ARJZ-R7

Analog Devices Inc.
IC OPAMP GP 1 CIRCUIT SOT23-6



ADA4891-3ARUZ

Analog Devices Inc.
IC CMOS 3 CIRCUIT 14TSSOP



ADA4891-1WARJZ-R7

Analog Devices Inc.
IC OPAMP GP 1 CIRCUIT SOT23-5



ADA4891-4ARZ-R7

Analog Devices Inc.
IC CMOS 4 CIRCUIT 14SOIC



ADA4891-2ARZ-R7

Analog Devices Inc.
IC CMOS 2 CIRCUIT 8SOIC



ADA4895-1ARZ

Analog Devices Inc.
IC OPAMP GP 1 CIRCUIT 8SOIC



ADA4891-4WARUZ-R7

Analog Devices Inc.
IC CMOS 4 CIRCUIT 14TSSOP



ADA4895-2ARMZ

Analog Devices Inc.
IC OPAMP VFB 2 CIRCUIT 10MSOP



ADA4891-4ARZ-RL

Analog Devices Inc.
IC CMOS 4 CIRCUIT 14SOIC



ADA4891-3ARZ-R7

Analog Devices Inc.
IC CMOS 3 CIRCUIT 14SOIC



ADA4891-3ARZ

Analog Devices Inc.
IC CMOS 3 CIRCUIT 14SOIC



ADA4891-2ARMZ

Analog Devices Inc.
IC CMOS 2 CIRCUIT 8MSOP



ADA4891-2ARZ

Analog Devices Inc.
IC CMOS 2 CIRCUIT 8SOIC



ADA4891-4ARZ

Analog Devices Inc.
IC CMOS 4 CIRCUIT 14SOIC

Shipment

Delivery Time

In-stock items can be shipped within 24 hours. Some parts will be arranged for delivery within 1-2 days from the date all items arrive at our warehouse. And Allelco ships order once a day at about 17:00, except Sunday. Once the goods are shipped, the estimated delivery time depends on the shipping methods and Delivery destination. The table below shows are the logistic time for some common countries.

Delivery Cost

> Use your express account for shipment if you have one.

> Use our account for the shipment. Refer to the table below for the approximate charges.

(Different time frame / countries / package size has different price.)

Delivery Method

> Global Common Shipment by DHL / UPS / FedEx / TNT / EMS / SF we support.

> Others more shipping ways, please get in touch with your customer manager.

Common Countries Logistic Time Reference		
Region	Country	Logistic Time(Day)
America	United States	5
	Brazil	7
Europe	Germany	5
	United Kingdom	4
	Italy	5
Oceania	Australia	6
	New Zealand	7
Asia	India	6
	Japan	7
Middle East	Israel	6

DHL & FedEx Shipment Charges Reference	
Shipment charges(KG)	Reference DHL(USD\$)
0.00kg-1.00kg	USD\$60.00
1.00kg-2.00kg	USD\$70.00
2.00kg-3.00kg	USD\$80.00

Note: The above table is for reference only. There may have some data bias for the uncontrollable factors.

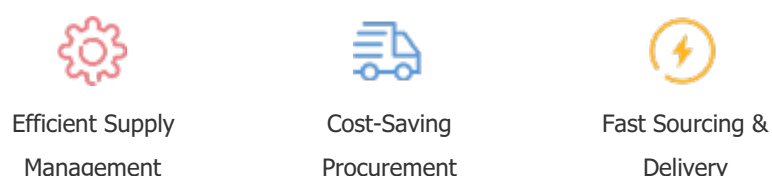
Contact us if you have any questions.

Payment Support

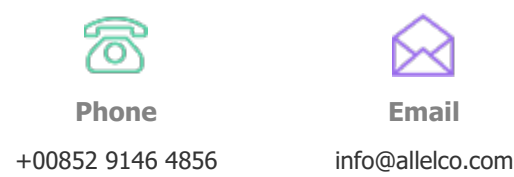
The payment method can be chosen from the methods shown below:
Wire Transfer (T/T, Bank Transfer), Western Union, Credit card,
PayPal.



Your Faithful Supply Chain Partner -



Contact us if you have any questions.



Certifications & Memberships



View More



ALLELCO LIMITED
WWW.ALLELCOELEC.COM

Contact us

Address: Flat/Rm C 13/F Harvard Commercial Building 105-111 Thomson Road, Wan Chai, Hong Kong

Phone: +00852 9146 4856

Fax: +00852 3010 8510

Email: info@allelco.com

Copyright © 2012-2023 AllelcoElec.com. All rights reserved.