



Image may be representation.  
See specifications for product details.



## XCS10-4VQ100C

Manufacturer Part Number	<b>XCS10-4VQ100C</b>
Manufacturer	<b>AMD Xilinx</b>
Allelco Part Number	32D-XCS10-4VQ100C
ECAD Model	Request Free CAD Models
Parts Description	IC FPGA 77 I/O 100VQFP
Package	100-TQFP
Data sheet	XCS10-4VQ100C.pdf

**Get a Quote**

XCS10-4VQ100C - AMD,New Original in Stock. Download Linear Technology XCS10-4VQ100C datasheet/specifications on AllelcoElec.com.  
Request a quote for XCS10-4VQ100C, please send us email: [info@allelco.com](mailto:info@allelco.com)

### Specifications

XCS10-4VQ100C Tech Specifications  
XCS10-4VQ100C - AMD technical specifications, attributes, parameters

Product Attribute	Attribute Value	Product Attribute	Attribute Value
Manufacturer	AMD Xilinx	Operating Temperature	0°C ~ 85°C (TJ)
Voltage - Supply	4.75V ~ 5.25V	Number of Logic Elements/Cells	466
Total RAM Bits	6272	Number of LABs/CLBs	196
Supplier Device Package	100-VQFP (14x14)	Number of I/O	77
Series	Spartan®	Number of Gates	10000
Package / Case	100-TQFP	Mounting Type	Surface Mount
Package	Tray	Base Product Number	XCS10

### Parts with Similar Specifications

The three parts on the right have similar specifications to AMD XCS10-4VQ100C

Product Attribute				
Part Number	XCS10-4VQ100C	<b>XCS10XL-4CS144C</b>	<b>XCS10-3VQ100I</b>	<b>XCS10XL-4TQ144C</b>
Manufacturer	AMD	AMD	AMD	AMD
Number of Logic Elements/Cells	466	466	466	466
Package / Case	100-TQFP	144-TFBGA, CSPBGA	100-TQFP	144-LQFP
Mounting Type	Surface Mount	Surface Mount	Surface Mount	Surface Mount
Number of Gates	10000	10000	10000	10000
Total RAM Bits	6272	6272	6272	6272
Package	Tray	Tray	Tray	Tray
Number of LABs/CLBs	196	196	196	196
Operating Temperature	0°C ~ 85°C (TJ)	0°C ~ 85°C (TJ)	-40°C ~ 100°C (TJ)	0°C ~ 85°C (TJ)
Supplier Device Package	100-VQFP (14x14)	144-LCSBGA (12x12)	100-VQFP (14x14)	144-TQFP (20x20)
Voltage - Supply	4.75V ~ 5.25V	3V ~ 3.6V	4.5V ~ 5.5V	3V ~ 3.6V
Number of I/O	77	112	77	112
Series	Spartan®	Spartan®-XL	Spartan®	Spartan®-XL
Base Product Number	XCS10	XCS10XL	XCS10	XCS10XL

### XCS10-4VQ100C Datasheet PDF

Download XCS10-4VQ100C pdf datasheets and AMD documentation for XCS10-4VQ100C - AMD.

#### Environmental Information

[Xilinx REACH211 Cert.pdf](#)

#### PCN Obsolescence/ EOL

[Spartan,Virtex FPGA/SCD 18/Oct/2010.pdf](#)

### Customers Also Interested in

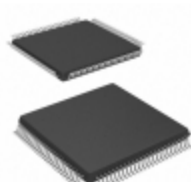
#### Recommended Products



**XCS10-3VQG100I**  
AMD Xilinx



**XCS10XL-4CS144C**  
AMD  
IC FPGA 112 I/O 144LCSBGA



**XCS10-3VQ100I**  
AMD  
IC FPGA 77 I/O 100VQFP



**XCS10XL-4TQ144C**  
AMD  
IC FPGA 112 I/O 144TQFP



**XCS10-4PC84C**  
AMD  
IC FPGA 61 I/O 84PLCC



**XCS10XL-3TQ144C**  
AMD Xilinx



### XCS10XL-4TQ144

AMD Xilinx

### XCS10-3VQG100C

AMD  
IC FPGA 77 I/O 100VQFP

### XCS10-3TQG144C

Altera (Intel)

### XCS10-4TQG144C

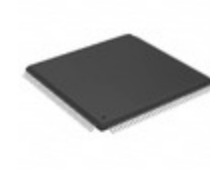
AMD Xilinx

### XCS10-3PC84C

AMD  
IC FPGA 61 I/O 84PLCC

### XCS10-4TQ144C

AMD  
IC FPGA 112 I/O 144TQFP



### XCS10XL-4PC84C

AMD  
IC FPGA 61 I/O 84PLCC

### XCS10TM-TQ144CKN

AMD Xilinx

### XCS10-3VQ100C

AMD  
IC FPGA 77 I/O 100VQFP

### XCS10-3TQ144C

AMD  
IC FPGA 112 I/O 144TQFP

### XCS10-5TQ144C

AMD Xilinx

### XCS10PC84-3C

AMD Xilinx

## Shipment

### Delivery Time

In-stock items can be shipped within 24 hours. Some parts will be arranged for delivery within 1-2 days from the date all items arrive at our warehouse. And Allelco ships order once a day at about 17:00, except Sunday. Once the goods are shipped, the estimated delivery time depends on the shipping methods and Delivery destination. The table below shows are the logistic time for some common countries.

### Delivery Cost

> Use your express account for shipment if you have one.

> Use our account for the shipment. Refer to the table below for the approximate charges.

(Different time frame / countries / package size has different price.)

### Delivery Method

> Global Common Shipment by DHL / UPS / FedEx / TNT / EMS / SF we support.

> Others more shipping ways, please get in touch with your customer manager.

Common Countries Logistic Time Reference

Region	Country	Logistic Time(Day)
America	United States	5
	Brazil	7
Europe	Germany	5
	United Kingdom	4
	Italy	5
Oceania	Australia	6
	New Zealand	7
Asia	India	6
	Japan	7
Middle East	Israel	6

DHL & FedEx Shipment Charges Reference

Shipment charges(KG)	Reference DHL(USD\$)
0.00kg-1.00kg	USD\$60.00
1.00kg-2.00kg	USD\$70.00
2.00kg-3.00kg	USD\$80.00

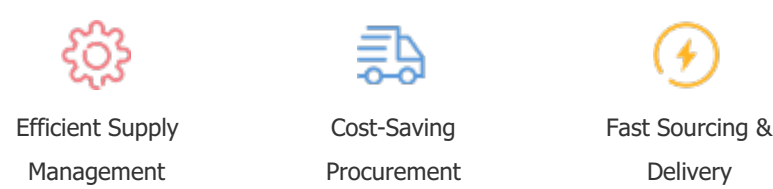
Note: The above table is for reference only. There may have some data bias for the uncontrollable factors. Contact us if you have any questions.

## Payment Support

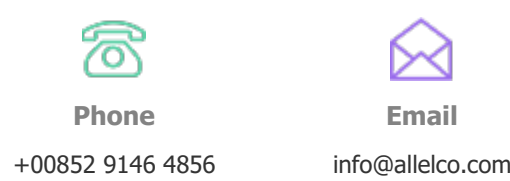
The payment method can be chosen from the methods shown below:  
Wire Transfer (T/T, Bank Transfer), Western Union, Credit card, PayPal.



## Your Faithful Supply Chain Partner -



Contact us if you have any questions.



## Certifications & Memberships



View More



### Contact us

Address: Flat/Rm C 13/F Harvard Commercial Building 105-111 Thomson Road, Wan Chai, Hong Kong

Phone: +00852 9146 4856

Fax: +00852 3010 8510

Email: info@allelco.com

Copyright © 2012-2023 AllelcoElec.com. All rights reserved.