

Image may be representation.
See specifications for product details.



AD7091R-2BRUZ-RL7

Manufacturer Part Number	AD7091R-2BRUZ-RL7
Manufacturer	Analog Devices, Inc.
Allelco Part Number	32D-AD7091R-2BRUZ-RL7
ECAD Model	Request Free CAD Models
Parts Description	IC ADC 12BIT SAR 16TSSOP
Package	16-TSSOP (0.173", 4.40mm Width)
Data sheet	AD7091R-2,4,8 Datasheet.pdf
RoHs Status	ROHS3 Compliant

Get a Quote

AD7091R-2BRUZ-RL7 - Analog Devices Inc..New Original in Stock. Download Linear Technology AD7091R-2BRUZ-RL7 datasheet/specifications on AllelcoElec.com.
Request a quote for AD7091R-2BRUZ-RL7, please send us email: info@allelco.com

Specifications

AD7091R-2BRUZ-RL7 Tech Specifications
AD7091R-2BRUZ-RL7 - Analog Devices Inc. technical specifications, attributes, parameters

Product Attribute	Attribute Value	Product Attribute	Attribute Value
Manufacturer	Analog Devices, Inc.	Number of Inputs	2
Voltage - Supply, Digital	2.09V ~ 5.25V	Number of Bits	12
Voltage - Supply, Analog	2.09V ~ 5.25V	Number of A/D Converters	1
Supplier Device Package	16-TSSOP	Mounting Type	Surface Mount
Series	-	Input Type	Single Ended
Sampling Rate (Per Second)	1M	Features	-
Reference Type	Supply	Data Interface	SPI, DSP
Ratio - S/H:ADC	1:1	Configuration	S/H-ADC
Package / Case	16-TSSOP (0.173", 4.40mm Width)	Base Product Number	AD7091
Package	Tape & Reel (TR)	Architecture	SAR
Operating Temperature	-40°C ~ 125°C		

Parts with Similar Specifications

The three parts on the right have similar specifications to Analog Devices Inc. AD7091R-2BRUZ-RL7

Product Attribute				
Part Number	AD7091R-2BRUZ-RL7	AD7091R-4BRUZ	AD7091R-2BCPZ	AD7091R-4BRUZ-RL7
Manufacturer	Analog Devices Inc.	Analog Devices Inc.	Analog Devices Inc.	Analog Devices Inc.
Data Interface	SPI, DSP	SPI, DSP	SPI, DSP	SPI, DSP
Package	Tape & Reel (TR)	Tube	Tray	Tape & Reel (TR)
Operating Temperature	-40°C ~ 125°C	-40°C ~ 125°C	-40°C ~ 125°C	-40°C ~ 125°C
Mounting Type	Surface Mount	Surface Mount	Surface Mount	Surface Mount
Voltage - Supply, Digital	2.09V ~ 5.25V	2.09V ~ 5.25V	2.09V ~ 5.25V	2.09V ~ 5.25V
Sampling Rate (Per Second)	1M	1M	1M	1M
Configuration	S/H-ADC	S/H-ADC	S/H-ADC	S/H-ADC
Features	-	-	-	-
Voltage - Supply, Analog	2.09V ~ 5.25V	2.09V ~ 5.25V	2.09V ~ 5.25V	2.09V ~ 5.25V
Ratio - S/H:ADC	1:1	1:1	1:1	1:1
Supplier Device Package	16-TSSOP	20-TSSOP	16-LFCSP-WQ (4x4)	20-TSSOP
Input Type	Single Ended	Single Ended	Single Ended	Single Ended
Base Product Number	AD7091	AD7091	AD7091	AD7091
Package / Case	16-TSSOP (0.173", 4.40mm Width)	20-TSSOP (0.173', 4.40mm Width)	16-WQFN Exposed Pad, CSP	20-TSSOP (0.173', 4.40mm Width)
Reference Type	Supply	Supply	Supply	Supply
Number of A/D Converters	1	1	1	1
Number of Inputs	2	4	2	4
Number of Bits	12	12	12	12
Architecture	SAR	SAR	SAR	SAR
Series	-	-	-	-

AD7091R-2BRUZ-RL7 Datasheet PDF

Download AD7091R-2BRUZ-RL7 pdf datasheets and Analog Devices Inc. documentation for AD7091R-2BRUZ-RL7 - Analog Devices Inc..

Datasheets

[AD7091R-2,4,8 Datasheet.pdf](#)

Other Related Documents

[Tape and Reel Packaging.pdf](#)



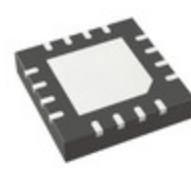
Calibration-Free Return Loss Measurement System CN.pdf

Customers Also Interested in

Recommended Products



AD7091R-4BRUZ
Analog Devices Inc.
IC ADC 12BIT SAR 20TSSOP



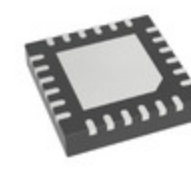
AD7091R-2BCPZ
Analog Devices Inc.
IC ADC 12BIT SAR 16LFCSP



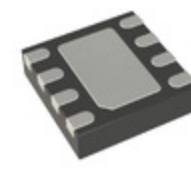
AD7091R-4BRUZ-RL7
Analog Devices Inc.
IC ADC 12BIT SAR 20TSSOP



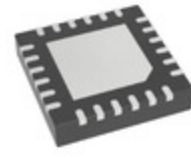
AD708SQ/883B
Analog Devices Inc.
IC OPAMP GP 2 CIRCUIT 8CERDIP



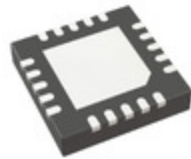
AD7091R-8BCPZ-RL7
Analog Devices Inc.
IC ADC 12BIT SAR 24LFCSP



AD7091BCPZ-RL
Analog Devices Inc.
IC ADC 12BIT SAR 8LFCSP



AD7091R-8BCPZ
Analog Devices Inc.
IC ADC 12BIT SAR 24LFCSP



AD7091R-5BCPZ
Analog Devices Inc.
IC ADC 12BIT SAR 20LFCSP



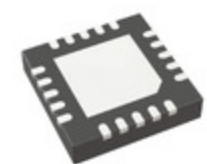
AD7091R-5BRUZ
Analog Devices Inc.
IC ADC 12BIT SAR 20TSSOP



AD7091R-8BRUZ
Analog Devices Inc.
IC ADC 12BIT SAR 24TSSOP



AD708TAR
ADI (Analog Devices, Inc.)



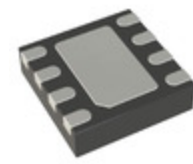
AD7091R-4BCPZ
Analog Devices Inc.
IC ADC 12BIT SAR 20LFCSP



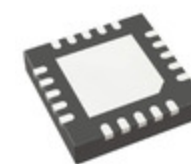
AD708SQ
ADI (Analog Devices, Inc.)



AD708SARZ
ADI (Analog Devices, Inc.)



AD7091BCPZ-RL7
Analog Devices Inc.
IC ADC 12BIT SAR 8LFCSP



AD7091R-4BCPZ-RL7
Analog Devices Inc.
IC ADC 12BIT SAR 20LFCSP



AD708RARZ
ADI (Analog Devices, Inc.)

Shipment

Delivery Time

In-stock items can be shipped within 24 hours. Some parts will be arranged for delivery within 1-2 days from the date all items arrive at our warehouse. And Allelco ships order once a day at about 17:00, except Sunday. Once the goods are shipped, the estimated delivery time depends on the shipping methods and Delivery destination. The table below shows are the logistic time for some common countries.

Delivery Cost

- > Use your express account for shipment if you have one.
 - > Use our account for the shipment. Refer to the table below for the approximate charges.
- (Different time frame / countries / package size has different price.)

Delivery Method

- > Global Common Shipment by DHL / UPS / FedEx / TNT / EMS / SF we support.
- > Others more shipping ways, please get in touch with your customer manager.

Common Countries Logistic Time Reference		
Region	Country	Logistic Time(Day)
America	United States	5
	Brazil	7
Europe	Germany	5
	United Kingdom	4
	Italy	5
Oceania	Australia	6
	New Zealand	7
Asia	India	6
	Japan	7
Middle East	Israel	6

DHL & FedEx Shipment Charges Reference	
Shipment charges(KG)	Reference DHL(USD\$)
0.00kg-1.00kg	USD\$60.00
1.00kg-2.00kg	USD\$70.00
2.00kg-3.00kg	USD\$80.00

Note: The above table is for reference only. There may have some data bias for the uncontrollable factors.
Contact us if you have any questions.

Payment Support

The payment method can be chosen from the methods shown below:
Wire Transfer (T/T, Bank Transfer), Western Union, Credit card, PayPal.



Your Faithful Supply Chain Partner -

- Efficient Supply Management
- Cost-Saving Procurement
- Fast Sourcing & Delivery

Contact us if you have any questions.

- Phone
+00852 9146 4856
- Email
info@allelco.com

Certifications & Memberships



[View More](#)

Contact us

Address: Flat/Rm C 13/F Harvard Commercial Building 105-111 Thomson Road, Wan Chai, Hong Kong
Phone: +00852 9146 4856
Fax: +00852 3010 8510
Email: info@Allelco.com