

Image may be representation.
See specifications for product details.



EP4SGX230KF40C2N

Manufacturer Part Number **EP4SGX230KF40C2N**

Manufacturer **Intel**

Allelco Part Number 32D-EP4SGX230KF40C2N

ECAD Model Request Free CAD Models

Parts Description **IC FPGA 744 I/O 1517FBGA**

Package **1517-BBGA, FCBGA**

Data sheet [Virtual JTAG Megafuntion Guide.pdf](#)

[Stratix IV Device Handbook Vol1.pdf](#)

[Stratix IV Device Handbook Vol.1.pdf](#)

RoHs Status RoHS Compliant

[Get a Quote](#)

EP4SGX230KF40C2N - Intel.New Original in Stock. Download Linear Technology EP4SGX230KF40C2N datasheet/specifications on AllelcoElec.com.
Request a quote for EP4SGX230KF40C2N, please send us email: info@allelco.com

Specifications

EP4SGX230KF40C2N Tech Specifications

EP4SGX230KF40C2N - Intel technical specifications, attributes, parameters

Product Attribute	Attribute Value	Product Attribute	Attribute Value
Manufacturer	Intel	Operating Temperature	0°C ~ 85°C (TJ)
Voltage - Supply	0.87V ~ 0.93V	Number of Logic Elements/Cells	228000
Total RAM Bits	17544192	Number of LABs/CLBs	9120
Supplier Device Package	1517-FBGA (40x40)	Number of I/O	744
Series	Stratix® IV GX	Mounting Type	Surface Mount
Package / Case	1517-BBGA, FCBGA	Base Product Number	EP4SGX230
Package	Tray		

Parts with Similar Specifications

The three parts on the right have similar specifications to Intel EP4SGX230KF40C2N

Product Attribute				
Part Number	EP4SGX230KF40C2N	EP4SGX230KF40C2	EP4SGX230HF35C4N	EP4SGX230KF40I4
Manufacturer	Intel	Intel	Intel	Intel
Number of I/O	744	744	564	744
Supplier Device Package	1517-FBGA (40x40)	1517-FBGA (40x40)	1152-FBGA (35x35)	1517-FBGA (40x40)
Voltage - Supply	0.87V ~ 0.93V	0.87V ~ 0.93V	0.87V ~ 0.93V	0.87V ~ 0.93V
Package / Case	1517-BBGA, FCBGA	1517-BBGA, FCBGA	1152-BBGA, FCBGA	1517-BBGA, FCBGA
Number of LABs/CLBs	9120	9120	9120	9120
Mounting Type	Surface Mount	Surface Mount	Surface Mount	Surface Mount
Base Product Number	EP4SGX230	EP4SGX230	EP4SGX230	EP4SGX230
Operating Temperature	0°C ~ 85°C (TJ)	0°C ~ 85°C (TJ)	0°C ~ 85°C (TJ)	-40°C ~ 100°C (TJ)
Number of Logic Elements/Cells	228000	228000	228000	228000
Package	Tray	Tray	Tray	Tray
Total RAM Bits	17544192	17544192	17544192	17544192
Series	Stratix® IV GX	Stratix® IV GX	Stratix® IV GX	Stratix® IV GX

EP4SGX230KF40C2N Datasheet PDF

Download EP4SGX230KF40C2N pdf datasheets and Intel documentation for EP4SGX230KF40C2N - Intel.

Datasheets



Virtual JTAG Megafuntion Guide.pdf



Stratix IV Device Handbook Vol1.pdf



Stratix IV Device Handbook Vol.1.pdf

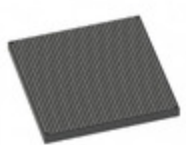
Errata



Stratix IV GX Errata.pdf

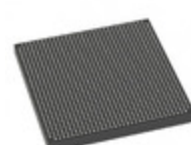
Customers Also Interested in

Recommended Products



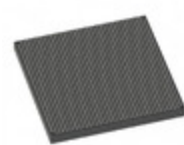
EP4SGX230KF40C2

Intel
IC FPGA 744 I/O 1517FBGA



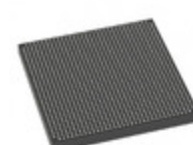
EP4SGX230HF35C4N

Intel
IC FPGA 564 I/O 1152FBGA



EP4SGX230KF40I4

Intel
IC FPGA 744 I/O 1517FBGA



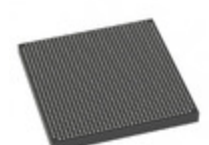
EP4SGX230HF35C4

Intel
IC FPGA 564 I/O 1152FBGA



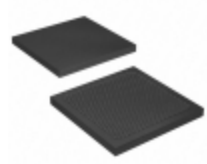
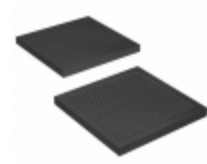
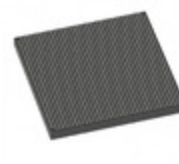
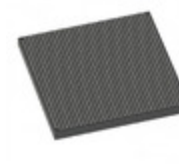
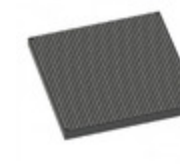
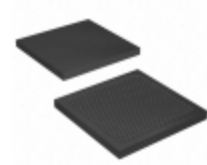
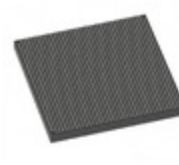
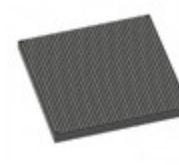
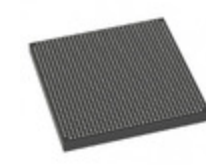
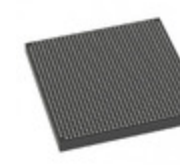
EP4SGX230KF40I3G

Intel
IC FPGA 744 I/O 1517FBGA



EP4SGX230HF35I3N

Intel
IC FPGA 564 I/O 1152FBGA

**EP4SGX230FF35I4N**Intel
IC FPGA 564 I/O 1152FBGA**EP4SGX230FF35I3N**Intel
IC FPGA 564 I/O 1152FBGA**EP4SGX230KF40C3N**Intel
IC FPGA 744 I/O 1517FBGA**EP4SGX230KF40I3**Intel
IC FPGA 744 I/O 1517FBGA**EP4SGX230FF35C4G**Intel
IC FPGA 564 I/O 1152FBGA**EP4SGX230KF40C4N**Intel
IC FPGA 744 I/O 1517FBGA**EP4SGX230KF40C3**Intel
IC FPGA 744 I/O 1517FBGA**EP4SGX230FF35C4N**Intel
IC FPGA 564 I/O 1152FBGA**EP4SGX230KF40C4**Intel
IC FPGA 744 I/O 1517FBGA**EP4SGX230KF40I3N**Intel
IC FPGA 744 I/O 1517FBGA**EP4SGX230HF35C2N**Intel
IC FPGA 564 I/O 1152FBGA**EP4SGX230HF35I4N**Intel
IC FPGA 564 I/O 1152FBGA

Shipment

Delivery Time

In-stock items can be shipped within 24 hours. Some parts will be arranged for delivery within 1-2 days from the date all items arrive at our warehouse. And Allelco ships order once a day at about 17:00, except Sunday. Once the goods are shipped, the estimated delivery time depends on the shipping methods and Delivery destination. The table below shows are the logistic time for some common countries.

Delivery Cost

> Use your express account for shipment if you have one.

> Use our account for the shipment. Refer to the table below for the approximate charges.

(Different time frame / countries / package size has different price.)

Delivery Method

> Global Common Shipment by DHL / UPS / FedEx / TNT / EMS / SF we support.

> Others more shipping ways, please get in touch with your customer manager.

Common Countries Logistic Time Reference

Region	Country	Logistic Time(Day)
America	United States	5
	Brazil	7
Europe	Germany	5
	United Kingdom	4
	Italy	5
Oceania	Australia	6
	New Zealand	7
Asia	India	6
	Japan	7
Middle East	Israel	6

DHL & FedEx Shipment Charges Reference

Shipment charges(KG)	Reference DHL(USD\$)
0.00kg-1.00kg	USD\$60.00
1.00kg-2.00kg	USD\$70.00
2.00kg-3.00kg	USD\$80.00

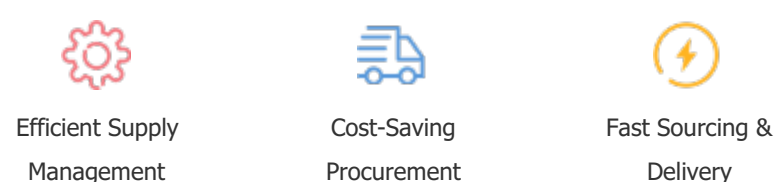
Note: The above table is for reference only. There may have some data bias for the uncontrollable factors.
Contact us if you have any questions.

Payment Support

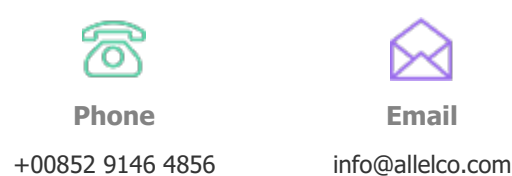
The payment method can be chosen from the methods shown below:
Wire Transfer (T/T, Bank Transfer), Western Union, Credit card, PayPal.



Your Faithful Supply Chain Partner -



Contact us if you have any questions.



Certifications & Memberships



[View More](#)

Contact us

Address: Flat/Rm C 13/F Harvard Commercial Building 105-111 Thomson Road, Wan Chai, Hong Kong

Phone: +00852 9146 4856

Fax: +00852 3010 8510

Email: info@Allelco.com