

Image may be representation.  
See specifications for product details.



## 5CEFA4F23C6N

Manufacturer Part Number	<b>5CEFA4F23C6N</b>
Manufacturer	<b>Intel</b>
Allelco Part Number	32D-5CEFA4F23C6N
ECAD Model	Request Free CAD Models
Parts Description	IC FPGA 224 I/O 484FBGA
Package	484-BGA
Data sheet	<a href="#">Virtual JTAG Megafuntion Guide.pdf</a> <a href="#">Cyclone V Device Handbook.pdf</a> <a href="#">Cyclone V Device Overview.pdf</a>
RoHs Status	RoHS Compliant

**Get a Quote**

5CEFA4F23C6N - Intel.New Original in Stock. Download Linear Technology 5CEFA4F23C6N datasheet/specifications on AllelcoElec.com.  
Request a quote for 5CEFA4F23C6N, please send us email: [info@allelco.com](mailto:info@allelco.com)

### Specifications

5CEFA4F23C6N Tech Specifications

5CEFA4F23C6N - Intel technical specifications, attributes, parameters

Product Attribute	Attribute Value	Product Attribute	Attribute Value
Manufacturer	Intel	Operating Temperature	0°C ~ 85°C (TJ)
Voltage - Supply	1.07V ~ 1.13V	Number of Logic Elements/Cells	49000
Total RAM Bits	3464192	Number of LABs/CLBs	18480
Supplier Device Package	484-FBGA (23x23)	Number of I/O	224
Series	Cyclone® V E	Mounting Type	Surface Mount
Package / Case	484-BGA	Base Product Number	5CEFA4
Package	Tray		

### Parts with Similar Specifications

The three parts on the right have similar specifications to Intel 5CEFA4F23C6N

Product Attribute				
Part Number	5CEFA4F23C6N	5CEFA4U19C6N	5CEFA4F23C8N	5CEFA4M13C8N
Manufacturer	Intel	Intel	Intel	Intel
Number of Logic Elements/Cells	49000	49000	49000	49000
Supplier Device Package	484-FBGA (23x23)	484-UBGA (19x19)	484-FBGA (23x23)	383-MBGA (13x13)
Mounting Type	Surface Mount	Surface Mount	Surface Mount	Surface Mount
Total RAM Bits	3464192	3464192	3464192	3464192
Number of I/O	224	224	224	223
Package / Case	484-BGA	484-FBGA	484-BGA	383-TFBGA
Series	Cyclone® V E	Cyclone® V E	Cyclone® V E	Cyclone® V E
Number of LABs/CLBs	18480	18480	18480	18480
Voltage - Supply	1.07V ~ 1.13V	1.07V ~ 1.13V	1.07V ~ 1.13V	1.07V ~ 1.13V
Base Product Number	5CEFA4	5CEFA4	5CEFA4	5CEFA4
Package	Tray	Tray	Tray	Tray
Operating Temperature	0°C ~ 85°C (TJ)	0°C ~ 85°C (TJ)	0°C ~ 85°C (TJ)	0°C ~ 85°C (TJ)

### 5CEFA4F23C6N Datasheet PDF

Download 5CEFA4F23C6N pdf datasheets and Intel documentation for 5CEFA4F23C6N - Intel.

#### Datasheets

- [Virtual JTAG Megafuntion Guide.pdf](#)
- [Cyclone V Device Handbook.pdf](#)
- [Cyclone V Device Overview.pdf](#)

#### PCN Packaging

- [Mult Dev Label CHG 24/Jan/2020.pdf](#)
- [Mult Dev Label Chgs 24/Feb/2020.pdf](#)

#### PCN Design/Specification

- [Quartus SW/Web Chgs 23/Sep/2021.pdf](#)
- [Mult Dev Software Chgs 3/Jun/2021.pdf](#)

#### Errata

- [Cyclone V GX,GT,E Errata.pdf](#)

### Customers Also Interested in

#### Recommended Products



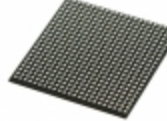
**5CEFA4U19C6N**  
Intel  
IC FPGA 224 I/O 484UBGA



**5CEFA4F23C8N**  
Intel  
IC FPGA 224 I/O 484FBGA



**5CEFA4M13C8N**  
Intel  
IC FPGA 223 I/O 383MBGA



**5CEFA2F23I7N**  
Intel  
IC FPGA 224 I/O 484FBGA



**5CEFA2U19C7N**  
Intel  
IC FPGA 224 I/O 484UBGA



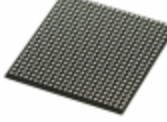
**5CEFA2M13C7N**  
Intel  
IC FPGA 223 I/O 383MBGA



**5CEFA4M13I7N**  
Intel  
IC FPGA 223 I/O 383MBGA




**5CEFA2U19I7N**  
Intel  
IC FPGA 224 I/O 484UBGA



**5CEFA4F23C7N**  
Intel  
IC FPGA 224 I/O 484FBGA



**5CEFA2M13C8N**  
Intel  
IC FPGA 223 I/O 383MBGA



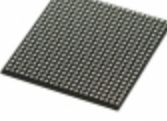
**5CEFA2F23I7NFA**  
Altera (Intel)



**5CEFA4U19A7N**  
Intel  
IC FPGA 224 I/O 484UBGA



**5CEFA4U19C7N**  
Intel  
IC FPGA 224 I/O 484UBGA



**5CEFA2F23C8N**  
Intel  
IC FPGA 224 I/O 484FBGA



**5CEFA4U19C8N**  
Intel  
IC FPGA 224 I/O 484UBGA



**5CEFA4F23I7N**  
Intel  
IC FPGA 224 I/O 484FBGA



**5CEFA2U19C8N**  
Intel  
IC FPGA 224 I/O 484UBGA



**5CEFA2M13I7N**  
Intel  
IC FPGA 223 I/O 383MBGA

## Shipment

### Delivery Time

In-stock items can be shipped within 24 hours. Some parts will be arranged for delivery within 1-2 days from the date all items arrive at our warehouse. And Allelco ships order once a day at about 17:00, except Sunday. Once the goods are shipped, the estimated delivery time depends on the shipping methods and Delivery destination. The table below shows are the logistic time for some common countries.

### Delivery Cost

> Use your express account for shipment if you have one.

> Use our account for the shipment. Refer to the table below for the approximate charges.

(Different time frame / countries / package size has different price.)

### Delivery Method

> Global Common Shipment by DHL / UPS / FedEx / TNT / EMS / SF we support.

> Others more shipping ways, please get in touch with your customer manager.

Common Countries Logistic Time Reference		
Region	Country	Logistic Time(Day)
America	United States	5
	Brazil	7
Europe	Germany	5
	United Kingdom	4
	Italy	5
Oceania	Australia	6
	New Zealand	7
Asia	India	6
	Japan	7
Middle East	Israel	6

DHL & FedEx Shipment Charges Reference	
Shipment charges(KG)	Reference DHL(USD\$)
0.00kg-1.00kg	USD\$60.00
1.00kg-2.00kg	USD\$70.00
2.00kg-3.00kg	USD\$80.00

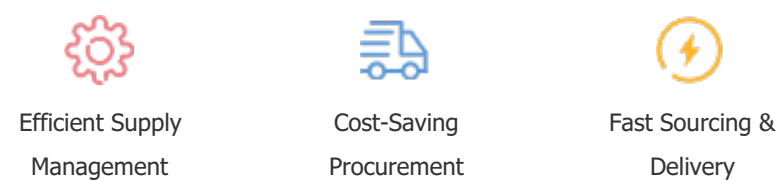
Note: The above table is for reference only. There may have some data bias for the uncontrollable factors.  
Contact us if you have any questions.

## Payment Support

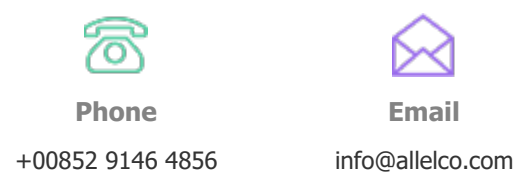
The payment method can be chosen from the methods shown below:  
Wire Transfer (T/T, Bank Transfer), Western Union, Credit card, PayPal.



## Your Faithful Supply Chain Partner -



Contact us if you have any questions.



## Certifications & Memberships



View More