



Image may be representation.
See specifications for product details.



MAX4641EUA

Manufacturer Part Number	MAX4641EUA
Manufacturer	Maxim Integrated
Allelco Part Number	32D-MAX4641EUA
ECAD Model	Request Free CAD Models
Parts Description	IC SWITCH SPST-NO X 2 40HM 8UMAX
Package	8-TSSOP, 8-MSOP (0.118", 3.00mm Width)
Data sheet	Cylindrical Battery Holders.pdf

Get a Quote

MAX4641EUA - Analog Devices Inc./Maxim Integrated. New Original in Stock. Download Linear Technology MAX4641EUA datasheet/specifications on AllelcoElec.com.
Request a quote for MAX4641EUA, please send us email: info@allelco.com

Specifications

MAX4641EUA Tech Specifications
MAX4641EUA - Analog Devices Inc./Maxim Integrated technical specifications, attributes, parameters

Product Attribute	Attribute Value	Product Attribute	Attribute Value
Manufacturer	Maxim Integrated	Number of Circuits	2
Voltage - Supply, Single (V+)	1.8V ~ 5.5V	Multiplexer/Demultiplexer Circuit	1:1
Voltage - Supply, Dual (V±)	-	Mounting Type	Surface Mount
Switch Time (Ton, Toff) (Max)	15ns, 8ns	Current - Leakage (IS(off)) (Max)	250pA
Switch Circuit	SPST - NO	Crosstalk	-97dB @ 1MHz
Supplier Device Package	8-uMAX/uSOP	Charge Injection	2pC
Series	-	Channel-to-Channel Matching (ΔRon)	200mOhm
Package / Case	8-TSSOP, 8-MSOP (0.118", 3.00mm Width)	Channel Capacitance (CS(off), CD(off))	7pF, 7pF
Package	Tube	Base Product Number	MAX4641
Operating Temperature	-40°C ~ 85°C (TA)	-3db Bandwidth	-
On-State Resistance (Max)	40hm		

Parts with Similar Specifications

The three parts on the right have similar specifications to Analog Devices Inc./Maxim Integrated MAX4641EUA

Product Attribute				
Part Number	MAX4641EUA	MAX4643EUA	MAX4639EUE+	MAX4641EUA+
Manufacturer	Analog Devices Inc./Maxim Integrated	Analog Devices Inc./Maxim Integrated	Analog Devices Inc./Maxim Integrated	Analog Devices Inc./Maxim Integrated
Charge Injection	2pC	2pC	13pC	2pC
Voltage - Supply, Single (V+)	1.8V ~ 5.5V	1.8V ~ 5.5V	1.8V ~ 5.5V	1.8V ~ 5.5V
Switch Time (Ton, Toff) (Max)	15ns, 8ns	15ns, 8ns	18ns, 7ns	15ns, 8ns
Base Product Number	MAX4641	MAX4643	MAX4639	MAX4641
Crosstalk	-97dB @ 1MHz	-97dB @ 1MHz	-85dB @ 1MHz	-97dB @ 1MHz
-3db Bandwidth	-	-	85MHz	-
Operating Temperature	-40°C ~ 85°C (TA)	-40°C ~ 85°C (TA)	-40°C ~ 85°C (TA)	-40°C ~ 85°C (TA)
On-State Resistance (Max)	40hm	40hm	3.50hm	40hm
Current - Leakage (IS(off)) (Max)	250pA	250pA	250pA	250pA
Switch Circuit	SPST - NO	SPST - NO/NC	SP4T	SPST - NO
Channel-to-Channel Matching (ΔRon)	200mOhm	200mOhm	100mOhm	200mOhm
Mounting Type	Surface Mount	Surface Mount	Surface Mount	Surface Mount
Multiplexer/Demultiplexer Circuit	1:1	1:1	4:1	1:1
Package / Case	8-TSSOP, 8-MSOP (0.118", 3.00mm Width)	8-TSSOP, 8-MSOP (0.118", 3.00mm Width)	16-TSSOP (0.173", 4.40mm Width)	8-TSSOP, 8-MSOP (0.118", 3.00mm Width)
Voltage - Supply, Dual (V±)	-	-	±2.5V	-
Channel Capacitance (CS(off), CD(off))	7pF, 7pF	7pF, 7pF	9pF, 20pF	7pF, 7pF
Number of Circuits	2	2	2	2
Supplier Device Package	8-uMAX/uSOP	8-uMAX/uSOP	16-TSSOP	8-uMAX/uSOP
Series	-	-	-	-
Package	Tube	Tube	Tube	Tube

MAX4641EUA Datasheet PDF

Download MAX4641EUA pdf datasheets and Analog Devices Inc./Maxim Integrated documentation for MAX4641EUA - Analog Devices Inc./Maxim Integrated.

Datasheets


[Cylindrical Battery Holders.pdf](#)

Environmental Information

[Maxim Integrated REACH.pdf](#)

[Maxim Integrated RoHS Cert.pdf](#)

Part Numbering Guide

 Part Numbering System.pdf

Customers Also Interested in

Recommended Products



MAX4643EUA

Analog Devices Inc./Maxim Integrated
IC SW SPST-NO/NCX2 40HM 8UMAX



MAX4639EUE+

Analog Devices Inc./Maxim Integrated
IC SWITCH SP4TX2 3.5OHM 16TSSOP



MAX4641EUA+

Analog Devices Inc./Maxim Integrated
IC SWITCH SPST-NO X 2 40HM 8UMAX



MAX4639ESE+

Analog Devices Inc./Maxim Integrated
IC SWITCH SP4T X 2 3.5OHM 16SOIC



MAX4641EUA-T

Analog Devices Inc./Maxim Integrated
IC SW SPST-NOX2 40HM 8UMAX



MAX4642EUA+T

Analog Devices Inc./Maxim Integrated
IC SWITCH SPST-NC X 2 40HM 8UMAX



MAX463EWG

Analog Devices Inc./Maxim Integrated
IC TRIPLE VIDEO BUFFER S024



MAX4639EUE+T

Analog Devices Inc./Maxim Integrated
IC SWITCH SP4TX2 3.5OHM 16TSSOP



MAX4641EUA+T

Analog Devices Inc./Maxim Integrated
IC SWITCH SPST-NO X 2 40HM 8UMAX



MAX4642EUA

Analog Devices Inc./Maxim Integrated
IC SWITCH SPST-NC X 2 40HM 8UMAX



MAX463CWG

Analog Devices Inc./Maxim Integrated
2-CH TRIPLE RGB SWITCH + BUFFER



MAX4638EUE+

Analog Devices Inc./Maxim Integrated
IC MUX 8:1 3.5OHM 16TSSOP



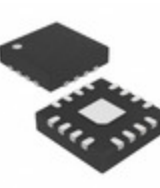
MAX4643EUA+

Analog Devices Inc./Maxim Integrated
IC SW SPST-NO/NCX2 40HM 8UMAX



MAX4639ESE+T

Analog Devices Inc./Maxim Integrated
IC SWITCH SP4T X 2 3.5OHM 16SOIC



MAX4638ETE+T

Analog Devices Inc./Maxim Integrated
IC MUX 8:1 3.5OHM 16TQFN



MAX4638EUE+T

Analog Devices Inc./Maxim Integrated
IC MUX 8:1 3.5OHM 16TSSOP



MAX4642EUA+

Analog Devices Inc./Maxim Integrated
IC SWITCH SPST-NC X 2 40HM 8UMAX



MAX4638EUE

Analog Devices Inc./Maxim Integrated
IC SW SP8T-NOX1 3.5OHM 16TSSOP

Shipment

Delivery Time

In-stock items can be shipped within 24 hours. Some parts will be arranged for delivery within 1-2 days from the date all items arrive at our warehouse. And Allelco ships order once a day at about 17:00, except Sunday. Once the goods are shipped, the estimated delivery time depends on the shipping methods and Delivery destination. The table below shows are the logistic time for some common countries.

Delivery Cost

- > Use your express account for shipment if you have one.
 - > Use our account for the shipment. Refer to the table below for the approximate charges.
- (Different time frame / countries / package size has different price.)

Delivery Method

- > Global Common Shipment by DHL / UPS / FedEx / TNT / EMS / SF we support.
- > Others more shipping ways, please get in touch with your customer manager.

Common Countries Logistic Time Reference

Region	Country	Logistic Time(Day)
America	United States	5
	Brazil	7
Europe	Germany	5
	United Kingdom	4
	Italy	5
Oceania	Australia	6
	New Zealand	7
Asia	India	6
	Japan	7
Middle East	Israel	6

DHL & FedEx Shipment Charges Reference

Shipment charges(KG)	Reference DHL(USD\$)
0.00kg-1.00kg	USD\$60.00
1.00kg-2.00kg	USD\$70.00
2.00kg-3.00kg	USD\$80.00

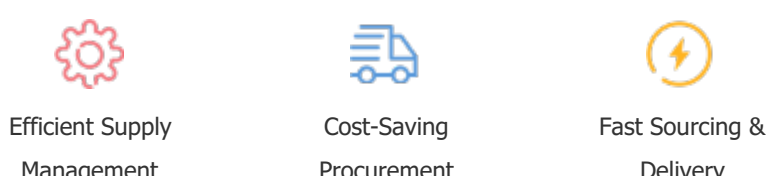
Note: The above table is for reference only. There may have some data bias for the uncontrollable factors.
Contact us if you have any questions.

Payment Support

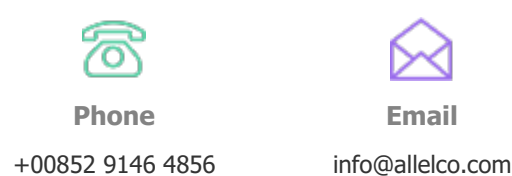
The payment method can be chosen from the methods shown below:
Wire Transfer (T/T, Bank Transfer), Western Union, Credit card, PayPal.



Your Faithful Supply Chain Partner -



Contact us if you have any questions.



Certifications & Memberships



View More

Contact us

Address: Flat/Rm C 13/F Harvard Commercial Building 105-111 Thomson Road, Wan Chai, Hong Kong
Phone: +00852 9146 4856
Fax: +00852 3010 8510
Email: info@allelco.com