

Image may be representation.
See specifications for product details.



EP2A15B724C9

Manufacturer Part Number	EP2A15B724C9
Manufacturer	Intel
Allelco Part Number	32D-EP2A15B724C9
ECAD Model	Request Free CAD Models
Parts Description	IC FPGA 492 I/O 724BGA
Package	724-BBGA, FCBGA
Data sheet	Virtual JTAG Megafuntion Guide.pdf 724-BGA Pkg Info.pdf APEX II Datasheet.pdf APEX II Device Family Datasheet.pdf

[Get a Quote](#)

EP2A15B724C9 - Intel.New Original in Stock. Download Linear Technology EP2A15B724C9 datasheet/specifications on AllelcoElec.com.
Request a quote for EP2A15B724C9, please send us email: info@allelco.com

Specifications

EP2A15B724C9 Tech Specifications

EP2A15B724C9 - Intel technical specifications, attributes, parameters

Product Attribute	Attribute Value	Product Attribute	Attribute Value
Manufacturer	Intel	Operating Temperature	0°C ~ 85°C (TJ)
Voltage - Supply	1.425V ~ 1.575V	Number of Logic Elements/Cells	16640
Total RAM Bits	425984	Number of LABs/CLBs	1664
Supplier Device Package	724-BGA (35x35)	Number of I/O	492
Series	APEX II	Number of Gates	1900000
Package / Case	724-BBGA, FCBGA	Mounting Type	Surface Mount
Package	Tray	Base Product Number	EP2A15

Parts with Similar Specifications

The three parts on the right have similar specifications to Intel EP2A15B724C9

Product Attribute				
Part Number	EP2A15B724C9	EP2A15F672C9N	EP2A15F672I8	EP2A15B724C7
Manufacturer	Intel	Intel	Altera	Intel
Voltage - Supply	1.425V ~ 1.575V	1.425V ~ 1.575V	1.425V ~ 1.575V	1.425V ~ 1.575V
Number of Logic Elements/Cells	16640	16640	-	16640
Package / Case	724-BBGA, FCBGA	672-BBGA	672-BBGA, FCBGA	724-BBGA, FCBGA
Number of I/O	492	492	492	492
Package	Tray	Tray	Bulk	Tray
Base Product Number	EP2A15	EP2A15	EP2A15	EP2A15
Number of LABs/CLBs	1664	1664	-	1664
Total RAM Bits	425984	425984	-	425984
Operating Temperature	0°C ~ 85°C (TJ)	0°C ~ 85°C (TJ)	-40°C ~ 100°C (TJ)	0°C ~ 85°C (TJ)
Mounting Type	Surface Mount	Surface Mount	Surface Mount	Surface Mount
Number of Gates	1900000	1900000	-	1900000
Series	APEX II	APEX II	APEX II	APEX II
Supplier Device Package	724-BGA (35x35)	672-FBGA (27x27)	672-FBGA (27x27)	724-BGA (35x35)

EP2A15B724C9 Datasheet PDF

Download EP2A15B724C9 pdf datasheets and Intel documentation for EP2A15B724C9 - Intel.

Datasheets

Virtual JTAG Megafuntion Guide.pdf

724-BGA Pkg Info.pdf

APEX II Datasheet.pdf

APEX II Device Family Datasheet.pdf

PCN Packaging

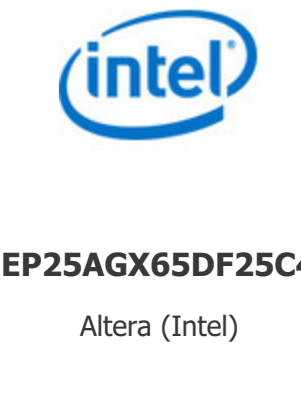
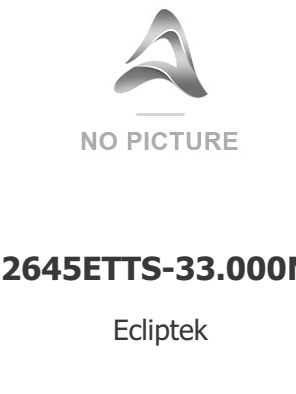
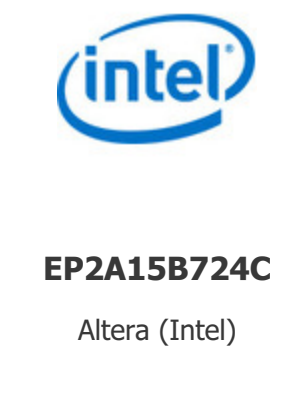
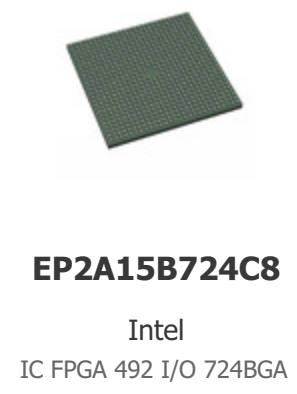
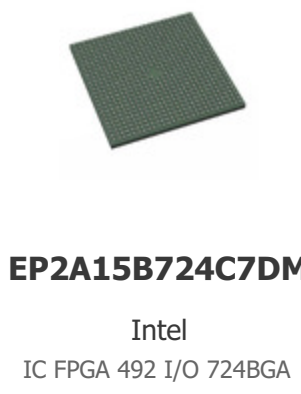
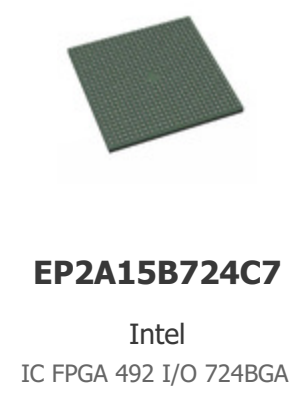
All Dev Pkg Chg 1/Aug/2018.pdf

PCN Obsolescence/ EOL

Multiple Devices 26/Feb/2007.pdf

Customers Also Interested in

Recommended Products



Shipment

Delivery Time

In-stock items can be shipped within 24 hours. Some parts will be arranged for delivery within 1-2 days from the date all items arrive at our warehouse. And Allelco ships order once a day at about 17:00, except Sunday. Once the goods are shipped, the estimated delivery time depends on the shipping methods and Delivery destination. The table below shows are the logistic time for some common countries.

Delivery Cost

> Use your express account for shipment if you have one.

> Use our account for the shipment. Refer to the table below for the approximate charges.

(Different time frame / countries / package size has different price.)

Delivery Method

> Global Common Shipment by DHL / UPS / FedEx / TNT / EMS / SF we support.

> Others more shipping ways, please get in touch with your customer manager.

Common Countries Logistic Time Reference		
Region	Country	Logistic Time(Day)
America	United States	5
	Brazil	7
Europe	Germany	5
	United Kingdom	4
	Italy	5
Oceania	Australia	6
	New Zealand	7
Asia	India	6
	Japan	7
Middle East	Israel	6

DHL & FedEx Shipment Charges Reference	
Shipment charges(KG)	Reference DHL(USD\$)
0.00kg-1.00kg	USD\$60.00
1.00kg-2.00kg	USD\$70.00
2.00kg-3.00kg	USD\$80.00

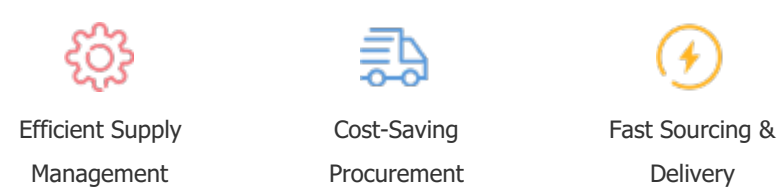
Note: The above table is for reference only. There may have some data bias for the uncontrollable factors.
Contact us if you have any questions.

Payment Support

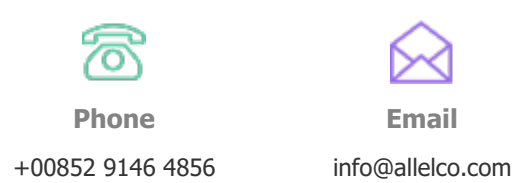
The payment method can be chosen from the methods shown below:
Wire Transfer (T/T, Bank Transfer), Western Union, Credit card, PayPal.



Your Faithful Supply Chain Partner -



Contact us if you have any questions.



Certifications & Memberships



[View More](#)