

Image may be representation.
See specifications for product details.



MAX4053ACSE+T

| | |
|--------------------------|----------------------------------|
| Manufacturer Part Number | MAX4053ACSE+T |
| Manufacturer | Maxim Integrated |
| Allelco Part Number | 32D-MAX4053ACSE+T |
| ECAD Model | Request Free CAD Models |
| Parts Description | IC SWITCH SPDT X 3 100OHM 16SOIC |
| Package | 16-SOIC (0.154", 3.90mm Width) |
| Data sheet | MAX4051(A)-53(A).pdf |
| RoHs Status | ROHS3 Compliant |

Get a Quote

MAX4053ACSE+T - Analog Devices Inc./Maxim Integrated.New Original in Stock. Download Linear Technology MAX4053ACSE+T datasheet/specifications on AllelcoElec.com.
Request a quote for MAX4053ACSE+T, please send us email: info@allelco.com

Specifications

MAX4053ACSE+T Tech Specifications

MAX4053ACSE+T - Analog Devices Inc./Maxim Integrated technical specifications, attributes, parameters

| Product Attribute | Attribute Value | Product Attribute | Attribute Value |
|-------------------------------|--------------------------------|--|-----------------|
| Manufacturer | Maxim Integrated | Number of Circuits | 3 |
| Voltage - Supply, Single (V+) | 2V ~ 16V | Multiplexer/Demultiplexer Circuit | 2:1 |
| Voltage - Supply, Dual (V±) | ±2.7V ~ 8V | Mounting Type | Surface Mount |
| Switch Time (Ton, Toff) (Max) | 175ns, 150ns | Current - Leakage (IS(off)) (Max) | 100pA |
| Switch Circuit | SPDT | Crosstalk | -90dB @ 100kHz |
| Supplier Device Package | 16-SOIC | Charge Injection | 2pC |
| Series | - | Channel-to-Channel Matching (ΔRon) | 60hm (Max) |
| Package / Case | 16-SOIC (0.154", 3.90mm Width) | Channel Capacitance (CS(off), CD(off)) | 2pF, 2pF |
| Package | Tape & Reel (TR) | Base Product Number | MAX4053 |
| Operating Temperature | 0°C ~ 70°C (TA) | -3db Bandwidth | - |
| On-State Resistance (Max) | 100Ohm | | |

Parts with Similar Specifications

The three parts on the right have similar specifications to Analog Devices Inc./Maxim Integrated MAX4053ACSE+T

| Product Attribute | | | | |
|--|--------------------------------------|--------------------------------------|--------------------------------------|--------------------------------------|
| Part Number | MAX4053ACSE+T | MAX4053ACEE+T | MAX4053CEE | MAX4052ESE+T |
| Manufacturer | Analog Devices Inc./Maxim Integrated | Analog Devices Inc./Maxim Integrated | Analog Devices Inc./Maxim Integrated | Analog Devices Inc./Maxim Integrated |
| Operating Temperature | 0°C ~ 70°C (TA) | 0°C ~ 70°C (TA) | 0°C ~ 70°C (TA) | -40°C ~ 85°C (TA) |
| Crosstalk | -90dB @ 100kHz | -90dB @ 100kHz | -90dB @ 100kHz | -90dB @ 100kHz |
| Charge Injection | 2pC | 2pC | 2pC | 2pC |
| Channel-to-Channel Matching (ΔRon) | 60hm (Max) | 60hm (Max) | 120hm (Max) | 120hm (Max) |
| Channel Capacitance (CS(off), CD(off)) | 2pF, 2pF | 2pF, 2pF | 2pF, 2pF | 2pF, 2pF |
| Voltage - Supply, Dual (V±) | ±2.7V ~ 8V | ±2.7V ~ 8V | ±2.7V ~ 8V | ±2.7V ~ 8V |
| Package | Tape & Reel (TR) | Tape & Reel (TR) | Tube | Tape & Reel (TR) |
| -3db Bandwidth | - | - | - | - |
| On-State Resistance (Max) | 100Ohm | 100Ohm | 100Ohm | 100Ohm |
| Supplier Device Package | 16-SOIC | 16-QSOP | 16-QSOP | 16-SOIC |
| Mounting Type | Surface Mount | Surface Mount | Surface Mount | Surface Mount |
| Switch Circuit | SPDT | SPDT | SPDT | SP4T |
| Number of Circuits | 3 | 3 | 3 | 2 |
| Package / Case | 16-SOIC (0.154", 3.90mm Width) | 16-SSOP (0.154", 3.90mm Width) | 16-SSOP (0.154", 3.90mm Width) | 16-SOIC (0.154", 3.90mm Width) |
| Voltage - Supply, Single (V+) | 2V ~ 16V | 2V ~ 16V | 2V ~ 16V | 2V ~ 16V |
| Multiplexer/Demultiplexer Circuit | 2:1 | 2:1 | 2:1 | 4:1 |
| Switch Time (Ton, Toff) (Max) | 175ns, 150ns | 175ns, 150ns | 175ns, 150ns | 175ns, 150ns |
| Series | - | - | - | - |
| Current - Leakage (IS(off)) (Max) | 100pA | 100pA | 1nA | 1nA |
| Base Product Number | MAX4053 | MAX4053 | MAX4053 | MAX4052 |

MAX4053ACSE+T Datasheet PDF

Download MAX4053ACSE+T pdf datasheets and Analog Devices Inc./Maxim Integrated documentation for MAX4053ACSE+T - Analog Devices Inc./Maxim Integrated.

Datasheets

[MAX4051\(A\)-53\(A\).pdf](#)


Environmental Information

[Maxim Integrated REACH.pdf](#)

[Maxim Integrated RoHS Cert.pdf](#)

[Red Phosphorous Certificate.pdf](#)

Part Numbering Guide

 Part Numbering System.pdf

Application Notes

 Fan Speed Control Is Cool!.pdf

Customers Also Interested in

Recommended Products



MAX4053ACEE+T

Analog Devices Inc./Maxim Integrated
IC SWITCH SPDT X 3 100OHM 16QSOP



MAX4053CEE

Analog Devices Inc./Maxim Integrated
IC SWITCH SPDT X 3 100OHM 16QSOP



MAX4052ESE+T

Analog Devices Inc./Maxim Integrated
IC SWITCH SP4T X 2 100OHM 16SOIC



MAX4053EEE+

Analog Devices Inc./Maxim Integrated
IC SWITCH SPDT X 3 100OHM 16QSOP



MAX4053CPE+

Analog Devices Inc./Maxim Integrated
IC SWITCH SPDT X 3 100OHM 16DIP



MAX4052EEE

Analog Devices Inc./Maxim Integrated
IC SWITCH SP4T X 2 100OHM 16QSOP



MAX4053CEE+T

Analog Devices Inc./Maxim Integrated
IC SWITCH SPDT X 3 100OHM 16QSOP



MAX4053CSE

Analog Devices Inc./Maxim Integrated
IC SWITCH SPDT X 3 100OHM 16SOIC



MAX4053AESE+T

Analog Devices Inc./Maxim Integrated
IC SWITCH SPDT X 3 100OHM 16QSOP



MAX4052CSE+

Analog Devices Inc./Maxim Integrated
IC SWITCH SP4T X 2 100OHM 16SOIC



MAX4053AESE

Analog Devices Inc./Maxim Integrated
IC SWITCH SPDT X 3 100OHM 16QSOP



MAX4053ACEE

Analog Devices Inc./Maxim Integrated
IC SWITCH SPDT X 3 100OHM 16QSOP



MAX4053EPE+

Analog Devices Inc./Maxim Integrated
IC SWITCH SPDT X 3 100OHM 16DIP



MAX4053CSE+T

Analog Devices Inc./Maxim Integrated
IC SWITCH SPDT X 3 100OHM 16SOIC



MAX4053EEE+T

Analog Devices Inc./Maxim Integrated
IC SWITCH SPDT X 3 100OHM 16QSOP



MAX4052ESE

Analog Devices Inc./Maxim Integrated
IC SWITCH SP4T X 2 100OHM 16SOIC



MAX4053ACSE

Analog Devices Inc./Maxim Integrated
IC SWITCH SPDT X 3 100OHM 16SOIC



MAX4053ACEE+

Analog Devices Inc./Maxim Integrated
IC SWITCH SPDT X 3 100OHM 16QSOP

Shipment

Delivery Time

In-stock items can be shipped within 24 hours. Some parts will be arranged for delivery within 1-2 days from the date all items arrive at our warehouse. And Allelco ships order once a day at about 17:00, except Sunday. Once the goods are shipped, the estimated delivery time depends on the shipping methods and Delivery destination. The table below shows are the logistic time for some common countries.

Delivery Cost

- > Use your express account for shipment if you have one.
 - > Use our account for the shipment. Refer to the table below for the approximate charges.
- (Different time frame / countries / package size has different price.)

Delivery Method

- > Global Common Shipment by DHL / UPS / FedEx / TNT / EMS / SF we support.
- > Others more shipping ways, please get in touch with your customer manager.

| Common Countries Logistic Time Reference | | |
|--|----------------|--------------------|
| Region | Country | Logistic Time(Day) |
| America | United States | 5 |
| | Brazil | 7 |
| Europe | Germany | 5 |
| | United Kingdom | 4 |
| | Italy | 5 |
| Oceania | Australia | 6 |
| | New Zealand | 7 |
| Asia | India | 6 |
| | Japan | 7 |
| Middle East | Israel | 6 |

| DHL & FedEx Shipment Charges Reference | |
|--|----------------------|
| Shipment charges(KG) | Reference DHL(USD\$) |
| 0.00kg-1.00kg | USD\$60.00 |
| 1.00kg-2.00kg | USD\$70.00 |
| 2.00kg-3.00kg | USD\$80.00 |

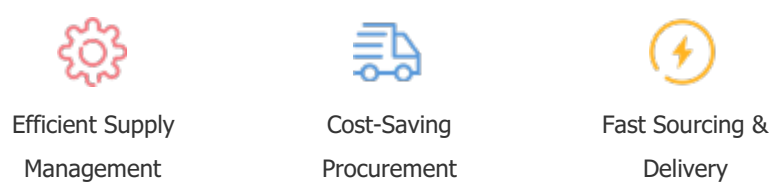
Note: The above table is for reference only. There may have some data bias for the uncontrollable factors.
Contact us if you have any questions.

Payment Support

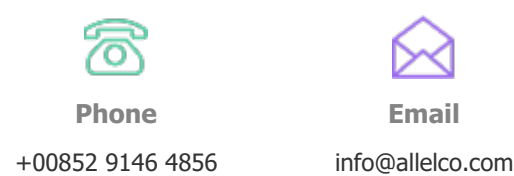
The payment method can be chosen from the methods shown below:
Wire Transfer (T/T, Bank Transfer), Western Union, Credit card, PayPal.



Your Faithful Supply Chain Partner -



Contact us if you have any questions.



Certifications & Memberships



[View More](#)

