



Image may be representation.
See specifications for product details.



SM6T18A

Manufacturer Part Number	SM6T18A
Manufacturer	STMicroelectronics
Allelco Part Number	32D-SM6T18A
ECAD Model	PCB Symbol, Footprint & 3D Mode
Parts Description	TVS DIODE 15.3VWM 32.5VC SMB
Package	DO-214AA, SMB
Data sheet	SM6T.pdf
RoHs Status	ROHS3 Compliant

Get a Quote

SM6T18A - STMicroelectronics.New Original in Stock. Download Linear Technology SM6T18A datasheet/specifications on AllelcoElec.com.
Request a quote for SM6T18A, please send us email: info@allelco.com

Specifications

SM6T18A Tech Specifications
SM6T18A - STMicroelectronics technical specifications, attributes, parameters

Product Attribute	Attribute Value	Product Attribute	Attribute Value
Manufacturer	STMicroelectronics	Power - Peak Pulse	600W
Voltage - Reverse Standoff (Typ)	15.3V	Package / Case	DO-214AA, SMB
Voltage - Clamping (Max) @ Ipp	32.5V	Package	Tape & Reel (TR)
Voltage - Breakdown (Min)	17.1V	Operating Temperature	-55°C ~ 150°C (TJ)
Unidirectional Channels	1	Mounting Type	Surface Mount
Type	Zener	Current - Peak Pulse (10/1000µs)	123A (8/20µs)
Supplier Device Package	SMB (DO-214AA)	Capacitance @ Frequency	-
Series	SM6T, TRANSIL™	Base Product Number	SM6T18
Power Line Protection	No	Applications	General Purpose

Parts with Similar Specifications

The three parts on the right have similar specifications to STMicroelectronics SM6T18A

Product Attribute				
Part Number	SM6T18A	SM6T18AY	SM6T18CA-E3/52	SM6T15CA-E3/52
Manufacturer	STMicroelectronics	STMicroelectronics	Vishay General Semiconductor - Diodes Division	Vishay General Semiconductor - Diodes Division
Voltage - Clamping (Max) @ Ipp	32.5V	32.5V	25.2V	21.2V
Current - Peak Pulse (10/1000µs)	123A (8/20µs)	123A (8/20µs)	24A	28A
Package	Tape & Reel (TR)	Tape & Reel (TR)	Tape & Reel (TR)	Tape & Reel (TR)
Series	SM6T, TRANSIL™	Automotive, AEC-Q101, SM6TY, TRANSIL™	SM6T, TransZorb®	SM6T, TransZorb®
Type	Zener	Zener	Zener	Zener
Mounting Type	Surface Mount	Surface Mount	Surface Mount	Surface Mount
Capacitance @ Frequency	-	-	-	-
Supplier Device Package	SMB (DO-214AA)	SMB (DO-214AA)	DO-214AA (SMBJ)	DO-214AA (SMBJ)
Power Line Protection	No	No	No	No
Power - Peak Pulse	600W	600W	600W	600W
Package / Case	DO-214AA, SMB	DO-214AA, SMB	DO-214AA, SMB	DO-214AA, SMB
Operating Temperature	-55°C ~ 150°C (TJ)	-55°C ~ 150°C (TJ)	-65°C ~ 150°C (TJ)	-65°C ~ 150°C (TJ)
Unidirectional Channels	1	1	-	-
Voltage - Breakdown (Min)	17.1V	17.1V	17.1V	14.3V
Voltage - Reverse Standoff (Typ)	15.3V	15.3V	15.3V	12.8V
Applications	General Purpose	Automotive	General Purpose	General Purpose
Base Product Number	SM6T18	SM6T18	SM6T18	SM6T15

SM6T18A Datasheet PDF

Download SM6T18A pdf datasheets and STMicroelectronics documentation for SM6T18A - STMicroelectronics.

HTML Datasheet

[SM6T.pdf](#)

Other Related Documents

[SM6T View All Specifications.pdf](#)

Customers Also Interested in

Recommended Products



SM6T18A-TR
STMicroelectronics



SM6T15CA-TR
STMicroelectronics



SM6T18AY
STMicroelectronics
TVS DIODE 15.3VWM 32.5VC SMB



SM6T18CA-E3/52
Vishay General Semiconductor - Diodes Division
TVS DIODE 15.3VWM 25.2VC DO214AA



SM6T15CA-E3/52
Vishay General Semiconductor - Diodes Division
TVS DIODE 12.8VWM 21.2VC DO214AA



SM6T16A
STMicroelectronics
TVS DIODE SMB



SM6T15CA
STMicroelectronics
TVS DIODE 12.8VWM 27.2VC SMB



SM6T15A
STMicroelectronics
TVS DIODE 12.8VWM 27.2VC SMB



SM6T18A-E3/52
Vishay General Semiconductor - Diodes Division
TVS DIODE 15.3VWM 25.2VC DO214AA



SM6T200A-E3/52
Vishay General Semiconductor - Diodes Division
TVS DIODE 171VWM 274VC DO214AA



SM6T200A
STMicroelectronics
TVS DIODE 171VWM 353VC SMB



SM6T150CA-TR
STMicroelectronics



SM6T200A-E3/5B
Vishay General Semiconductor - Diodes Division
TVS DIODE 171VWM 274VC DO214AA



SM6T15A-TR
STMicroelectronics



SM6T16CA
SUNMATE



SM6T18CA
STMicroelectronics
TVS DIODE 15.3VWM 32.5VC SMB



SM6T150CA-E3/52
Vishay General Semiconductor - Diodes Division
TVS DIODE 128VWM 207VC DO214AA



SM6T15A-E3/52
Vishay General Semiconductor - Diodes Division
TVS DIODE 12.8VWM 21.2VC DO214AA

Shipment

Delivery Time

In-stock items can be shipped within 24 hours. Some parts will be arranged for delivery within 1-2 days from the date all items arrive at our warehouse. And Alleco ships order once a day at about 17:00, except Sunday. Once the goods are shipped, the estimated delivery time depends on the shipping methods and Delivery destination. The table below shows are the logistic time for some common countries.

Delivery Cost

> Use your express account for shipment if you have one.

> Use our account for the shipment. Refer to the table below for the approximate charges.

(Different time frame / countries / package size has different price.)

Delivery Method

> Global Common Shipment by DHL / UPS / FedEx / TNT / EMS / SF we support.

> Others more shipping ways, please get in touch with your customer manager.

Common Countries Logistic Time Reference		
Region	Country	Logistic Time(Day)
America	United States	5
	Brazil	7
Europe	Germany	5
	United Kingdom	4
	Italy	5
Oceania	Australia	6
	New Zealand	7
Asia	India	6
	Japan	7
Middle East	Israel	6

DHL & FedEx Shipment Charges Reference	
Shipment charges(KG)	Reference DHL(USD\$)
0.00kg-1.00kg	USD\$60.00
1.00kg-2.00kg	USD\$70.00
2.00kg-3.00kg	USD\$80.00

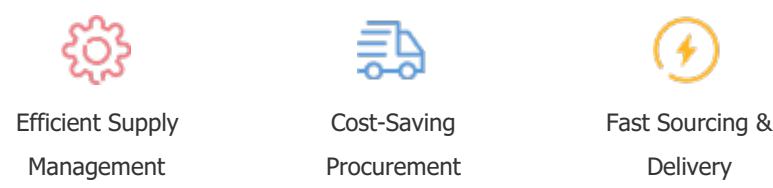
Note: The above table is for reference only. There may have some data bias for the uncontrollable factors.
Contact us if you have any questions.

Payment Support

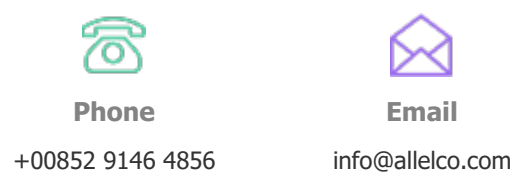
The payment method can be chosen from the methods shown below:
Wire Transfer (T/T, Bank Transfer), Western Union, Credit card, PayPal.



Your Faithful Supply Chain Partner -



Contact us if you have any questions.



Certifications & Memberships



[View More](#)