



## XC4VLX100-12FF1148C

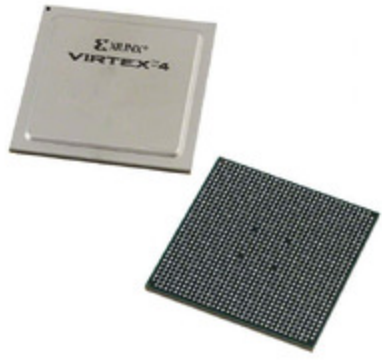


Image may be representation.  
See specifications for product details.

Manufacturer Part Number	<b>XC4VLX100-12FF1148C</b>
Manufacturer	<b>AMD Xilinx</b>
Allelco Part Number	32D-XC4VLX100-12FF1148C
ECAD Model	Request Free CAD Models
Parts Description	IC FPGA 768 I/O 1148FCBGA
Package	1148-BBGA, FCBGA
Data sheet	XC4VLX100-12FF1148C.pdf

**Get a Quote**

XC4VLX100-12FF1148C - AMD.New Original in Stock. Download Linear Technology XC4VLX100-12FF1148C datasheet/specifications on AllelcoElec.com.  
Request a quote for XC4VLX100-12FF1148C, please send us email: [info@allelco.com](mailto:info@allelco.com)



### Specifications

XC4VLX100-12FF1148C Tech Specifications  
XC4VLX100-12FF1148C - AMD technical specifications, attributes, parameters

Product Attribute	Attribute Value	Product Attribute	Attribute Value
Manufacturer	AMD Xilinx	Operating Temperature	0°C ~ 85°C (TJ)
Voltage - Supply	1.14V ~ 1.26V	Number of Logic Elements/Cells	110592
Total RAM Bits	4423680	Number of LABs/CLBs	12288
Supplier Device Package	1148-FCPBGA (35x35)	Number of I/O	768
Series	Virtex®-4 LX	Mounting Type	Surface Mount
Package / Case	1148-BBGA, FCBGA	Base Product Number	XC4VLX100
Package	Bulk		

### Parts with Similar Specifications

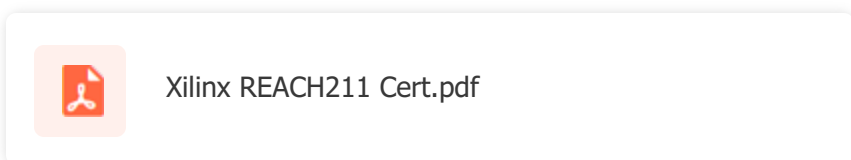
The three parts on the right have similar specifications to AMD XC4VLX100-12FF1148C

Product Attribute				
Part Number	XC4VLX100-12FF1148C	XC4VLX15-10SF363I	XC4VLX100-11FFG1148I	XC4VLX15-10FFG676C
Manufacturer	AMD	AMD	AMD	AMD
Number of Logic Elements/Cells	110592	13824	110592	13824
Package	Bulk	Tray	Tray	Tray
Supplier Device Package	1148-FCPBGA (35x35)	363-FCBGA (17x17)	1148-FCPBGA (35x35)	676-FCBGA (27x27)
Series	Virtex®-4 LX	Virtex®-4 LX	Virtex®-4 LX	Virtex®-4 LX
Package / Case	1148-BBGA, FCBGA	363-FBGA, FCBGA	1148-BBGA, FCBGA	676-BBGA, FCBGA
Number of I/O	768	240	768	320
Number of LABs/CLBs	12288	1536	12288	1536
Operating Temperature	0°C ~ 85°C (TJ)	-40°C ~ 100°C (TJ)	-40°C ~ 100°C (TJ)	0°C ~ 85°C (TJ)
Total RAM Bits	4423680	884736	4423680	884736
Base Product Number	XC4VLX100	XC4VLX15	XC4VLX100	XC4VLX15
Voltage - Supply	1.14V ~ 1.26V	1.14V ~ 1.26V	1.14V ~ 1.26V	1.14V ~ 1.26V
Mounting Type	Surface Mount	Surface Mount	Surface Mount	Surface Mount

### XC4VLX100-12FF1148C Datasheet PDF

Download XC4VLX100-12FF1148C pdf datasheets and AMD documentation for XC4VLX100-12FF1148C - AMD.

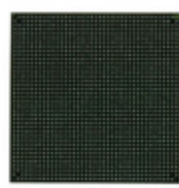
#### Environmental Information



### Customers Also Interested in

#### Recommended Products

<b>XC4VLX15-10SF363I</b>	<b>XC4VLX100-11FFG1148I</b>	<b>XC4VLX15-10FFG676C</b>	<b>XC4VLX15-10FFG668C</b>	<b>XC4VLX100-11FF1148I</b>	<b>XC4VLX100-10FFG1513I</b>	
AMD IC FPGA 240 I/O 363FCBGA	AMD IC FPGA 768 I/O 1148FCBGA	AMD IC FPGA 320 I/O 676FCBGA	AMD IC FPGA 320 I/O 668FCBGA	AMD IC FPGA 768 I/O 1148FCBGA	Xilinx IC FPGA 960 I/O 1513FCBGA	
<b>XC4VLX100-11FF1148C</b>	<b>XC4VLX100-10FFG1148C</b>	<b>XC4VLX100-10FFG1148I</b>	<b>XC4VLX100-11FFG1148C</b>	<b>XC4VLX15-11SFG363C</b>	<b>XC4VLX15-10FFG668I</b>	
AMD IC FPGA 768 I/O 1148FCBGA	AMD IC FPGA 768 I/O 1148FCBGA	AMD IC FPGA 768 I/O 1148FCBGA	AMD IC FPGA 768 I/O 1148FCBGA	AMD IC FPGA 240 I/O 363FCBGA	AMD IC FPGA 320 I/O 668FCBGA	



### XC4VLX15-10SFG363I

AMD  
IC FPGA 240 I/O 363FCBGA

### XC4VLX100-10FFG1513C

AMD  
IC FPGA 960 I/O 1513FCBGA

### XC4VLX15-10FF668C

AMD  
IC FPGA 320 I/O 668FCBGA

### XC4VLX15-11SFG363I

AMD  
IC FPGA 240 I/O 363FCBGA

### XC4VLX100-11FF1513C

Xilinx  
IC FPGA 960 I/O 1513FCBGA

### XC4VLX15-10SFG363C

AMD  
IC FPGA 240 I/O 363FCBGA

## Shipment

### Delivery Time

In-stock items can be shipped within 24 hours. Some parts will be arranged for delivery within 1-2 days from the date all items arrive at our warehouse. And Allelco ships order once a day at about 17:00, except Sunday. Once the goods are shipped, the estimated delivery time depends on the shipping methods and Delivery destination. The table below shows are the logistic time for some common countries.

### Delivery Cost

> Use your express account for shipment if you have one.

> Use our account for the shipment. Refer to the table below for the approximate charges.

(Different time frame / countries / package size has different price.)

### Delivery Method

> Global Common Shipment by DHL / UPS / FedEx / TNT / EMS / SF we support.

> Others more shipping ways, please get in touch with your customer manager.

Common Countries Logistic Time Reference

Region	Country	Logistic Time(Day)
America	United States	5
	Brazil	7
Europe	Germany	5
	United Kingdom	4
	Italy	5
Oceania	Australia	6
	New Zealand	7
Asia	India	6
	Japan	7
Middle East	Israel	6

DHL & FedEx Shipment Charges Reference

Shipment charges(KG)	Reference DHL(USD\$)
0.00kg-1.00kg	USD\$60.00
1.00kg-2.00kg	USD\$70.00
2.00kg-3.00kg	USD\$80.00

Note: The above table is for reference only. There may have some data bias for the uncontrollable factors.  
Contact us if you have any questions.

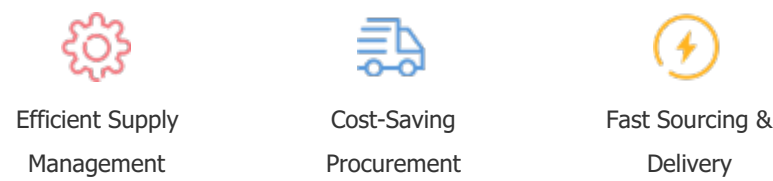
### Payment Support

The payment method can be chosen from the methods shown below:

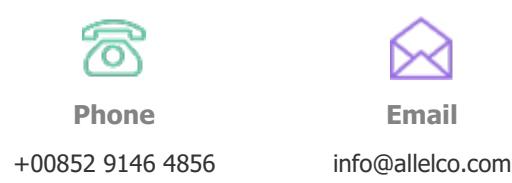
Wire Transfer (T/T, Bank Transfer), Western Union, Credit card, PayPal.



### Your Faithful Supply Chain Partner -



Contact us if you have any questions.



### Certifications & Memberships



[View More](#)



### Contact us

Address: Flat/Rm C 13/F Harvard Commercial Building 105-111 Thomson Road, Wan Chai, Hong Kong

Phone: +00852 9146 4856

Fax: +00852 3010 8510

Email: info@Allelco.com

Copyright © 2012-2023 AllelcoElec.com. All rights reserved.