



Image may be representation.
See specifications for product details.



STW26N60M2

Manufacturer Part Number	STW26N60M2
Manufacturer	STMicroelectronics
Allelco Part Number	32D-STW26N60M2
ECAD Model	PCB Symbol, Footprint & 3D Model
Parts Description	MOSFET N-CH 600V 20A TO247
Package	TO-247-3
Data sheet	STx26N60M2.pdf
RoHs Status	ROHS3 Compliant

Get a Quote

STW26N60M2 - STMicroelectronics.New Original in Stock. Download Linear Technology STW26N60M2 datasheet/specifications on AllelcoElec.com.
Request a quote for STW26N60M2, please send us email: info@allelco.com

Specifications

STW26N60M2 Tech Specifications
STW26N60M2 - STMicroelectronics technical specifications, attributes, parameters

Product Attribute	Attribute Value	Product Attribute	Attribute Value
Manufacturer	STMicroelectronics	Operating Temperature	-55°C ~ 150°C (TJ)
Vgs(th) (Max) @ Id	4V @ 250µA	Mounting Type	Through Hole
Vgs (Max)	±25V	Input Capacitance (Ciss) (Max) @ Vds	1360 pF @ 100 V
Technology	MOSFET (Metal Oxide)	Gate Charge (Qg) (Max) @ Vgs	34 nC @ 10 V
Supplier Device Package	TO-247-3	FET Type	N-Channel
Series	MDmesh™ M2	FET Feature	-
Rds On (Max) @ Id, Vgs	165mOhm @ 10A, 10V	Drive Voltage (Max Rds On, Min Rds On)	10V
Power Dissipation (Max)	169W (Tc)	Drain to Source Voltage (Vdss)	600 V
Package / Case	TO-247-3	Current - Continuous Drain (Id) @ 25°C	20A (Tc)
Package	Tube	Base Product Number	STW26

Parts with Similar Specifications

The three parts on the right have similar specifications to STMicroelectronics STW26N60M2

Product Attribute				
Part Number	STW26N60M2	STW25N60M2-EP	STW26NM60N	STW28N60DM2
Manufacturer	STMicroelectronics	STMicroelectronics	STMicroelectronics	STMicroelectronics
Series	MDmesh™ M2	MDmesh™ M2-EP	MDmesh™ II	MDmesh™ DM2
Base Product Number	STW26	STW25	STW26	STW28
Mounting Type	Through Hole	Through Hole	Through Hole	Through Hole
Rds On (Max) @ Id, Vgs	165mOhm @ 10A, 10V	188mOhm @ 9A, 10V	165mOhm @ 10A, 10V	160mOhm @ 10.5A, 10V
FET Feature	-	-	-	-
Technology	MOSFET (Metal Oxide)	MOSFET (Metal Oxide)	MOSFET (Metal Oxide)	MOSFET (Metal Oxide)
Vgs (Max)	±25V	±25V	±30V	±25V
Package	Tube	Tube	Tube	Tube
Current - Continuous Drain (Id) @ 25°C	20A (Tc)	18A (Tc)	20A (Tc)	21A (Tc)
Input Capacitance (Ciss) (Max) @ Vds	1360 pF @ 100 V	1090 pF @ 100 V	1800 pF @ 50 V	1500 pF @ 100 V
Drain to Source Voltage (Vdss)	600 V	600 V	600 V	600 V
Gate Charge (Qg) (Max) @ Vgs	34 nC @ 10 V	29 nC @ 10 V	60 nC @ 10 V	34 nC @ 10 V
FET Type	N-Channel	N-Channel	N-Channel	N-Channel
Package / Case	TO-247-3	TO-247-3	TO-247-3	TO-247-3
Vgs(th) (Max) @ Id	4V @ 250µA	4.75V @ 250µA	4V @ 250µA	5V @ 250µA
Supplier Device Package	TO-247-3	TO-247-3	TO-247-3	TO-247-3
Power Dissipation (Max)	169W (Tc)	150W (Tc)	140W (Tc)	170W (Tc)
Operating Temperature	-55°C ~ 150°C (TJ)	-55°C ~ 150°C (TJ)	150°C (TJ)	-55°C ~ 150°C (TJ)
Drive Voltage (Max Rds On, Min Rds On)	10V	10V	10V	10V

STW26N60M2 Datasheet PDF

Download STW26N60M2 pdf datasheets and STMicroelectronics documentation for STW26N60M2 - STMicroelectronics.

Datasheets

STx26N60M2.pdf

PCN Design/Specification

Mult Dev Adv Material Notice 8/Apr/2019.pdf

PCN Assembly/Origin

Customers Also Interested in

Recommended Products



STW25N60M2-EP
STMicroelectronics
MOSFET N-CHANNEL 600V 18A TO247



STW26NM60N
STMicroelectronics
MOSFET N-CH 600V 20A TO247-3



STW28N60DM2
STMicroelectronics
MOSFET N-CH 600V 21A TO247



STW26NM50
STMicroelectronics
MOSFET N-CH 500V 30A TO247-3



STW25N95K3
STMicroelectronics
MOSFET N-CH 950V 22A TO247



STW26NM60
STMicroelectronics
MOSFET N-CH 600V 30A TO247-3



STW25NM50N
STMicroelectronics
MOSFET N-CH 500V 22A TO247-3



STW27N60M2-EP
STMicroelectronics
MOSFET N-CH 600V 20A TO247-3



STW24NM65N
STMicroelectronics
MOSFET N-CH 650V 19A TO247-3



STW24NM60N
STMicroelectronics
MOSFET N-CH 600V 17A TO247



STW25N80K5
STMicroelectronics
MOSFET N-CH 800V 19.5A TO247



STW28NM50N
STMicroelectronics
MOSFET N-CH 500V 21A TO247-3



STW28N60M2
STMicroelectronics
MOSFET N-CH 600V 24A TO247



STW25NM60ND
STMicroelectronics
MOSFET N-CH 600V 21A TO247-3



STW28NK60Z
STMicroelectronics
MOSFET N-CH 600V 27A TO247-3



STW25NM60
STMicroelectronics



STW25NM60N
STMicroelectronics
MOSFET N-CH 600V 21A TO247-3



STW26N65DM2
STMicroelectronics
MOSFET N-CH 650V 20A TO247

Shipment

Delivery Time

In-stock items can be shipped within 24 hours. Some parts will be arranged for delivery within 1-2 days from the date all items arrive at our warehouse. And Alleco ships order once a day at about 17:00, except Sunday. Once the goods are shipped, the estimated delivery time depends on the shipping methods and Delivery destination. The table below shows are the logistic time for some common countries.

Delivery Cost

- > Use your express account for shipment if you have one.
 - > Use our account for the shipment. Refer to the table below for the approximate charges.
- (Different time frame / countries / package size has different price.)

Delivery Method

- > Global Common Shipment by DHL / UPS / FedEx / TNT / EMS / SF we support.
- > Others more shipping ways, please get in touch with your customer manager.

Common Countries Logistic Time Reference		
Region	Country	Logistic Time(Day)
America	United States	5
	Brazil	7
Europe	Germany	5
	United Kingdom	4
	Italy	5
Oceania	Australia	6
	New Zealand	7
Asia	India	6
	Japan	7
Middle East	Israel	6

DHL & FedEx Shipment Charges Reference	
Shipment charges(KG)	Reference DHL(USD\$)
0.00kg-1.00kg	USD\$60.00
1.00kg-2.00kg	USD\$70.00
2.00kg-3.00kg	USD\$80.00

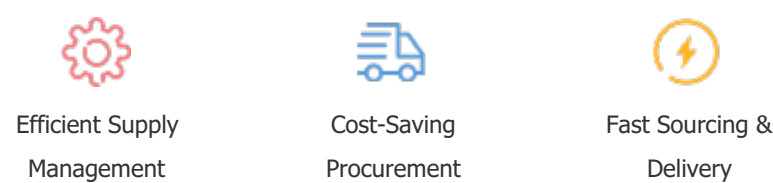
Note: The above table is for reference only. There may have some data bias for the uncontrollable factors. Contact us if you have any questions.

Payment Support

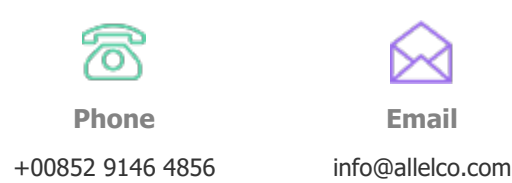
The payment method can be chosen from the methods shown below:
Wire Transfer (T/T, Bank Transfer), Western Union, Credit card, PayPal.



Your Faithful Supply Chain Partner -



Contact us if you have any questions.



Certifications & Memberships



[View More](#)

Contact us

Address: Flat/Rm C 13/F Harvard Commercial Building 105-111 Thomson Road, Wan Chai, Hong Kong
Phone: +00852 9146 4856
Fax: +00852 3010 8510
Email: info@Alleco.com