



Image may be representation.
See specifications for product details.



M27W401-80N6

Manufacturer Part Number	M27W401-80N6
Manufacturer	STMicroelectronics
Allelco Part Number	32D-M27W401-80N6
ECAD Model	Request Free CAD Models
Parts Description	IC EPROM 4MBIT PARALLEL 32TSOP
Package	32-TFSOP (0.724", 18.40mm Width)
Data sheet	M27W401.pdf
RoHs Status	ROHS3 Compliant

Get a Quote

M27W401-80N6 - STMicroelectronics.New Original in Stock. Download Linear Technology M27W401-80N6 datasheet/specifications on AllelcoElec.com.
Request a quote for M27W401-80N6, please send us email: info@allelco.com

Specifications

M27W401-80N6 Tech Specifications
M27W401-80N6 - STMicroelectronics technical specifications, attributes, parameters

Product Attribute	Attribute Value	Product Attribute	Attribute Value
Manufacturer	STMicroelectronics	Mounting Type	Surface Mount
Write Cycle Time - Word, Page	-	Memory Type	Non-Volatile
Voltage - Supply	2.7V ~ 3.6V	Memory Size	4Mbit
Technology	EPROM - OTP	Memory Organization	512K x 8
Supplier Device Package	32-TSOP	Memory Interface	Parallel
Series	-	Memory Format	EPROM
Package / Case	32-TFSOP (0.724", 18.40mm Width)	Base Product Number	M27W401
Package	Tray	Access Time	80 ns
Operating Temperature	-40°C ~ 85°C (TA)		

Parts with Similar Specifications

The three parts on the right have similar specifications to STMicroelectronics M27W401-80N6

Product Attribute				
Part Number	M27W401-80N6	M27W512-100N6	M27W101-80K6TR	M27W402-100B6
Manufacturer	STMicroelectronics	STMicroelectronics	STMicroelectronics	STMicroelectronics
Memory Format	EPROM	EPROM	EPROM	EPROM
Access Time	80 ns	100 ns	80 ns	100 ns
Series	-	-	-	-
Memory Type	Non-Volatile	Non-Volatile	Non-Volatile	Non-Volatile
Voltage - Supply	2.7V ~ 3.6V	2.7V ~ 3.6V	2.7V ~ 3.6V	2.7V ~ 3.6V
Mounting Type	Surface Mount	Surface Mount	Surface Mount	Through Hole
Package	Tray	Tray	Tape & Reel (TR)	Tube
Base Product Number	M27W401	M27W512	M27W101	M27W402
Package / Case	32-TFSOP (0.724", 18.40mm Width)	28-TSSOP (0.465", 11.80mm Width)	32-LCC (J-Lead)	40-DIP (0.600", 15.24mm)
Memory Organization	512K x 8	64K x 8	128K x 8	256 x 16
Operating Temperature	-40°C ~ 85°C (TA)	-40°C ~ 85°C (TA)	-40°C ~ 85°C (TA)	-40°C ~ 85°C (TA)
Write Cycle Time - Word, Page	-	-	-	-
Technology	EPROM - OTP	EPROM - OTP	EPROM - OTP	EPROM - OTP
Supplier Device Package	32-TSOP	28-TSOP	32-PLCC (11.35x13.89)	40-PDIP
Memory Size	4Mbit	512Kbit	1Mbit	4Kbit
Memory Interface	Parallel	Parallel	Parallel	Parallel

M27W401-80N6 Datasheet PDF

Download M27W401-80N6 pdf datasheets and STMicroelectronics documentation for M27W401-80N6 - STMicroelectronics.

Datasheets

M27W401.pdf

Customers Also Interested in

Recommended Products

M27W401-80K6L STMicroelectronics	M27W512-100N6 STMicroelectronics IC EPROM 512KBIT PARALLEL 28TSOP	M27W101-80K6TR STMicroelectronics IC EPROM 1MBIT PARALLEL 32PLCC	M27W064-100M1 STMicroelectronics	M27W402-100B6 STMicroelectronics IC EPROM 4KBIT PARALLEL 40DIP	M27W512-100K6 STMicroelectronics IC EPROM 512KBIT PARALLEL 32PLCC



M27W401-80NG
STMicroelectronics



M27W10180K6
STMicroelectronics



M27W401
STMicroelectronics



M27W101-80K6
STMicroelectronics
IC EPROM 1MBIT PARALLEL 32PLCC



M27W256B-80F6
STMicroelectronics
IC EPROM 256KBIT PARALLEL 28CDIP



M27W201
STMicroelectronics



M27W101-80N6TR
STMicroelectronics
IC EPROM 1MBIT PARALLEL 32TSOP



M27W401-80K6
STMicroelectronics
IC EPROM 4MBIT PARALLEL 32PLCC



M27W401-80B6
STMicroelectronics
IC EPROM 4MBIT PARALLEL 32DIP



M27W801-100N6
STMicroelectronics
IC EPROM 8MBIT PARALLEL 32TSOP



M27W201-80K6
STMicroelectronics
IC EPROM 2MBIT PARALLEL 32PLCC



M27W201-80B6
STMicroelectronics
IC EPROM 2MBIT PARALLEL 32DIP

Shipment

Delivery Time

In-stock items can be shipped within 24 hours. Some parts will be arranged for delivery within 1-2 days from the date all items arrive at our warehouse. And Allelco ships order once a day at about 17:00, except Sunday. Once the goods are shipped, the estimated delivery time depends on the shipping methods and Delivery destination. The table below shows are the logistic time for some common countries.

Delivery Cost

- > Use your express account for shipment if you have one.
 - > Use our account for the shipment. Refer to the table below for the approximate charges.
- (Different time frame / countries / package size has different price.)

Delivery Method

- > Global Common Shipment by DHL / UPS / FedEx / TNT / EMS / SF we support.
- > Others more shipping ways, please get in touch with your customer manager.

Common Countries Logistic Time Reference

Region	Country	Logistic Time(Day)
America	United States	5
	Brazil	7
Europe	Germany	5
	United Kingdom	4
	Italy	5
Oceania	Australia	6
	New Zealand	7
Asia	India	6
	Japan	7
Middle East	Israel	6

DHL & FedEx Shipment Charges Reference

Shipment charges(KG)	Reference DHL(USD\$)
0.00kg-1.00kg	USD\$60.00
1.00kg-2.00kg	USD\$70.00
2.00kg-3.00kg	USD\$80.00

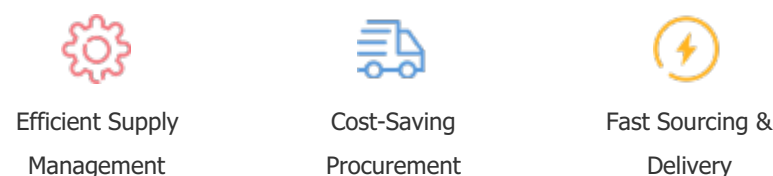
Note: The above table is for reference only. There may have some data bias for the uncontrollable factors.
Contact us if you have any questions.

Payment Support

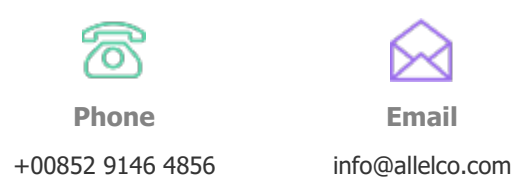
The payment method can be chosen from the methods shown below:
Wire Transfer (T/T, Bank Transfer), Western Union, Credit card, PayPal.



Your Faithful Supply Chain Partner -



Contact us if you have any questions.



Certifications & Memberships



[View More](#)



Contact us

Address: Flat/Rm C 13/F Harvard Commercial Building 105-111 Thomson Road, Wan Chai, Hong Kong
Phone: +00852 9146 4856
Fax: +00852 3010 8510
Email: info@Allelco.com