

Image may be representation.
See specifications for product details.



EPM9560ABC356-10

Manufacturer Part Number **EPM9560ABC356-10**

Manufacturer **Intel**

Allelco Part Number **32D-EPM9560ABC356-10**

ECAD Model [Request Free CAD Models](#)

Parts Description **IC CPLD 560MC 10NS 356BGA**

Package **356-LBGA**

Data sheet **[Cylindrical Battery Holders.pdf](#)**

Get a Quote

EPM9560ABC356-10 - Intel.New Original in Stock. Download Linear Technology EPM9560ABC356-10 datasheet/specifications on AllelcoElec.com.
Request a quote for EPM9560ABC356-10, please send us email: info@allelco.com

Specifications

EPM9560ABC356-10 Tech Specifications
EPM9560ABC356-10 - Intel technical specifications, attributes, parameters

Product Attribute	Attribute Value	Product Attribute	Attribute Value
Manufacturer	Intel	Number of Macrocells	560
Voltage Supply - Internal	4.75V ~ 5.25V	Number of Logic Elements/Blocks	35
Supplier Device Package	356-BGA (35x35)	Number of I/O	216
Series	MAX® 9000A	Number of Gates	12000
Programmable Type	In System Programmable	Mounting Type	Surface Mount
Package / Case	356-LBGA	Delay Time tpd(1) Max	10 ns
Package	Tray	Base Product Number	EPM9560
Operating Temperature	0°C ~ 70°C (TA)		

Parts with Similar Specifications

The three parts on the right have similar specifications to Intel EPM9560ABC356-10

Product Attribute				
Part Number	EPM9560ABC356-10	EPM9400RC208-20	EPM9480RC240-15	EPM9480RC208-15
Manufacturer	Intel	Intel	Intel	Intel
Number of Gates	12000	8000	10000	10000
Package / Case	356-LBGA	208-BFQFP Exposed Pad	240-BFQFP Exposed Pad	208-BFQFP Exposed Pad
Operating Temperature	0°C ~ 70°C (TA)	0°C ~ 70°C (TA)	0°C ~ 70°C (TA)	0°C ~ 70°C (TA)
Series	MAX® 9000A	MAX® 9000	MAX® 9000	MAX® 9000
Voltage Supply - Internal	4.75V ~ 5.25V	4.75V ~ 5.25V	4.75V ~ 5.25V	4.75V ~ 5.25V
Supplier Device Package	356-BGA (35x35)	208-RQFP (28x28)	240-RQFP (32x32)	208-RQFP (28x28)
Number of Macrocells	560	400	480	480
Package	Tray	Tray	Tray	Tray
Delay Time tpd(1) Max	10 ns	20 ns	15 ns	15 ns
Mounting Type	Surface Mount	Surface Mount	Surface Mount	Surface Mount
Number of I/O	216	139	175	146
Programmable Type	In System Programmable	In System Programmable	In System Programmable	In System Programmable
Number of Logic Elements/Blocks	35	25	30	30
Base Product Number	EPM9560	EPM9400	EPM9480	EPM9480

EPM9560ABC356-10 Datasheet PDF

Download EPM9560ABC356-10 pdf datasheets and Intel documentation for EPM9560ABC356-10 - Intel.

Datasheets

[Cylindrical Battery Holders.pdf](#)

PCN Packaging

[2.73KHz.pdf](#)

PCN Obsolescence/ EOL

[EOL 01/Dec/2016.pdf](#)

[EOL 21/Nov/2016.pdf](#)

PCN Other

[Software Disc 06/Nov/2020.pdf](#)

Customers Also Interested in

Recommended Products

					
EPM9400RC208-20	EPM9480RC240-15	EPM9480RC208-15	EPM9400RC208-15	EPM9400RC240-15	EPM9560ARC208-10N
Intel IC CPLD 400MC 20NS 208RQFP	Intel IC CPLD 480MC 15NS 240RQFP	Intel IC CPLD 480MC 15NS 208RQFP	Altera IC CPLD 400MC 15NS 208RQFP	Intel IC CPLD 400MC 15NS 240RQFP	Intel IC CPLD 560MC 10NS 208RQFP
					
EPM9560ARI240-10	EPM9560ARC208-10	EPM9400RC208-20	EPM9560ARI208-10N	EPM9560ARI208-10	EPM9560GC280-15
Intel IC CPLD 560MC 10NS 240RQFP	Intel IC CPLD 560MC 10NS 208RQFP	Altera IC CPLD 400MC 20NS 208RQFP	Altera (Intel)	Intel IC CPLD 560MC 10NS 208RQFP	Altera (Intel)
					
EPM9480RC240-15	EPM9400LC84-20N	EPM9560ARC208-15	EPM9560ARC240-10	EPM9560ARC240-10N	EPM9400RC208-15
Altera IC CPLD 480MC 15NS 240RQFP	Altera (Intel)	Altera (Intel)	Intel IC CPLD 560MC 10NS 240RQFP	Intel IC CPLD 560MC 10NS 240RQFP	Intel IC CPLD 400MC 15NS 208RQFP

Shipment

Delivery Time

In-stock items can be shipped within 24 hours. Some parts will be arranged for delivery within 1-2 days from the date all items arrive at our warehouse. And Allelco ships order once a day at about 17:00, except Sunday. Once the goods are shipped, the estimated delivery time depends on the shipping methods and Delivery destination. The table below shows are the logistic time for some common countries.

Delivery Cost

> Use your express account for shipment if you have one.

> Use our account for the shipment. Refer to the table below for the approximate charges.

(Different time frame / countries / package size has different price.)

Delivery Method

> Global Common Shipment by DHL / UPS / FedEx / TNT / EMS / SF we support.

> Others more shipping ways, please get in touch with your customer manager.

Common Countries Logistic Time Reference		
Region	Country	Logistic Time(Day)
America	United States	5
	Brazil	7
Europe	Germany	5
	United Kingdom	4
	Italy	5
Oceania	Australia	6
	New Zealand	7
Asia	India	6
	Japan	7
Middle East	Israel	6

DHL & FedEx Shipment Charges Reference	
Shipment charges(KG)	Reference DHL(USD\$)
0.00kg-1.00kg	USD\$60.00
1.00kg-2.00kg	USD\$70.00
2.00kg-3.00kg	USD\$80.00

Note: The above table is for reference only. There may have some data bias for the uncontrollable factors.

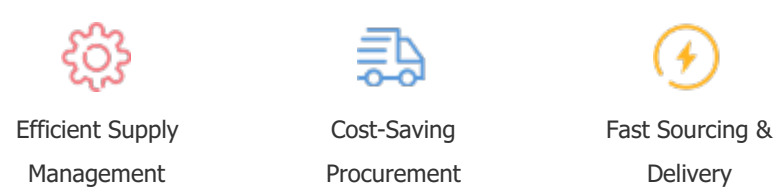
Contact us if you have any questions.

Payment Support

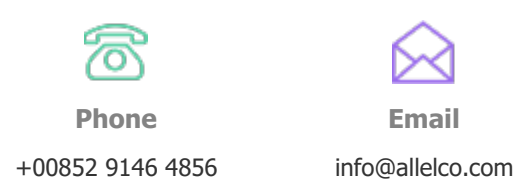
The payment method can be chosen from the methods shown below:
Wire Transfer (T/T, Bank Transfer), Western Union, Credit card, PayPal.



Your Faithful Supply Chain Partner -



Contact us if you have any questions.



+00852 9146 4856

info@allelco.com

Certifications & Memberships



View More