

Image may be representation.  
See specifications for product details.



## STTH2003CT

Manufacturer Part Number	<b>STTH2003CT</b>
Manufacturer	<b>STMicroelectronics</b>
Allelco Part Number	32D-STTH2003CT
ECAD Model	PCB Symbol, Footprint & 3D Mode
Parts Description	DIODE ARRAY GP 300V 10A TO220AB
Package	TO-220-3
Data sheet	<b>STTH2003.pdf</b>
RoHs Status	<b>ROHS3 Compliant</b>

**Get a Quote**

STTH2003CT - STMicroelectronics.New Original in Stock. Download Linear Technology STTH2003CT datasheet/specifications on AllelcoElec.com.  
Request a quote for STTH2003CT, please send us email: [info@allelco.com](mailto:info@allelco.com)

### Specifications

STTH2003CT Tech Specifications  
STTH2003CT - STMicroelectronics technical specifications, attributes, parameters

Product Attribute	Attribute Value	Product Attribute	Attribute Value
Manufacturer	STMicroelectronics	Package / Case	TO-220-3
Voltage - Forward (Vf) (Max) @ If	1.25 V @ 10 A	Package	Tube
Voltage - DC Reverse (Vr) (Max)	300 V	Operating Temperature - Junction	175°C (Max)
Technology	Standard	Mounting Type	Through Hole
Supplier Device Package	TO-220	Diode Configuration	1 Pair Common Cathode
Speed	Fast Recovery =< 500ns, > 200mA (Io)	Current - Reverse Leakage @ Vr	20 µA @ 300 V
Series	-	Current - Average Rectified (Io) (per Diode)	10A
Reverse Recovery Time (trr)	35 ns	Base Product Number	STTH2003

### Parts with Similar Specifications

The three parts on the right have similar specifications to STMicroelectronics STTH2003CT

Product Attribute				
Part Number	STTH2003CT	STTH2003CG-TR	STTH2003CG	STTH200L06TV1
Manufacturer	STMicroelectronics	STMicroelectronics	STMicroelectronics	STMicroelectronics
Series	-	-	-	-
Current - Reverse Leakage @ Vr	20 µA @ 300 V	20 µA @ 300 V	20 µA @ 300 V	100 µA @ 600 V
Technology	Standard	Standard	Standard	Standard
Supplier Device Package	TO-220	D2PAK	D2PAK	ISOTOP®
Speed	Fast Recovery =< 500ns, > 200mA (Io)	Fast Recovery =< 500ns, > 200mA (Io)	Fast Recovery =< 500ns, > 200mA (Io)	Fast Recovery =< 500ns, > 200mA (Io)
Voltage - DC Reverse (Vr) (Max)	300 V	300 V	300 V	600 V
Current - Average Rectified (Io) (per Diode)	10A	10A	10A	120A
Reverse Recovery Time (trr)	35 ns	35 ns	35 ns	120 ns
Voltage - Forward (Vf) (Max) @ If	1.25 V @ 10 A	1.25 V @ 10 A	1.25 V @ 10 A	1.55 V @ 100 A
Mounting Type	Through Hole	Surface Mount	Surface Mount	Chassis Mount
Base Product Number	STTH2003	STTH2003	STTH2	STTH200
Package / Case	TO-220-3	TO-263-3, D²Pak (2 Leads + Tab), TO-263AB	TO-263-3, D²Pak (2 Leads + Tab), TO-263AB	ISOTOP
Operating Temperature - Junction	175°C (Max)	175°C (Max)	175°C (Max)	150°C (Max)
Package	Tube	Tape & Reel (TR)	Tube	Tube
Diode Configuration	1 Pair Common Cathode	1 Pair Common Cathode	1 Pair Common Cathode	2 Independent

### STTH2003CT Datasheet PDF

Download STTH2003CT pdf datasheets and STMicroelectronics documentation for STTH2003CT - STMicroelectronics.

#### Datasheets

[STTH2003.pdf](#)

#### PCN Packaging

[Box Label Chg 28/Jul/2016.pdf](#)

#### PCN Design/Specification

[Mult Dev Adv Material Notice 8/Apr/2019.pdf](#)

#### PCN Assembly/Origin

[Mult Dev Mold Compound Chg 1/May/2019.pdf](#)

### Customers Also Interested in

## Recommended Products

 <b>STTH2003CG-TR</b> STMicroelectronics DIODE ARRAY GP 300V 10A D2PAK	 <b>STTH2002DI</b> STMicroelectronics DIODE GP 200V 20A TO220AC INS	 <b>STTH200L04TV</b> STMicroelectronics IGBT Module	 <b>STTH2003CG</b> STMicroelectronics DIODE ARRAY GP 300V 10A D2PAK	 <b>STTH200L06TV1</b> STMicroelectronics DIODE MODULE 600V 120A ISOTOP	 <b>STTH2004S</b> STMicroelectronics
 <b>STTH2003CG MOS</b> STMicroelectronics	 <b>STTH200F04TV1</b> STMicroelectronics DIODE GEN PURP 400V 100A ISOTOP	 <b>STTH2003CGY-TR</b> STMicroelectronics DIODE ARRAY GP 300V 10A D2PAK	 <b>STTH200R04TV</b> STMicroelectronics IGBT Module	 <b>STTH200L06TV</b> STMicroelectronics IGBT Module	 <b>STTH2003CR</b> STMicroelectronics DIODE ARRAY GP 300V 10A I2PAK
 <b>STTH2003C</b> STMicroelectronics	 <b>STTH2003CFP</b> STMicroelectronics DIODE ARRAY GP 300V 10A TO220FP	 <b>STTH200L04TV1</b> STMicroelectronics DIODE MODULE 400V 120A ISOTOP	 <b>STTH2002D</b> STMicroelectronics DIODE GEN PURP 200V 20A TO220AC	 <b>STTH2004SG-TR</b> STMicroelectronics DFD THYR TRIAC & RECTIFIER	 <b>STTH2002G-TR</b> STMicroelectronics DIODE GEN PURP 200V 20A D2PAK

## Shipment

### Delivery Time

In-stock items can be shipped within 24 hours. Some parts will be arranged for delivery within 1-2 days from the date all items arrive at our warehouse. And Allelco ships order once a day at about 17:00, except Sunday. Once the goods are shipped, the estimated delivery time depends on the shipping methods and Delivery destination. The table below shows are the logistic time for some common countries.

### Delivery Cost

- > Use your express account for shipment if you have one.
  - > Use our account for the shipment. Refer to the table below for the approximate charges.
- (Different time frame / countries / package size has different price.)

### Delivery Method

- > Global Common Shipment by DHL / UPS / FedEx / TNT / EMS / SF we support.
- > Others more shipping ways, please get in touch with your customer manager.

Common Countries Logistic Time Reference		
Region	Country	Logistic Time(Day)
America	United States	5
	Brazil	7
Europe	Germany	5
	United Kingdom	4
	Italy	5
Oceania	Australia	6
	New Zealand	7
Asia	India	6
	Japan	7
Middle East	Israel	6

DHL & FedEx Shipment Charges Reference	
Shipment charges(KG)	Reference DHL(USD\$)
0.00kg-1.00kg	USD\$60.00
1.00kg-2.00kg	USD\$70.00
2.00kg-3.00kg	USD\$80.00

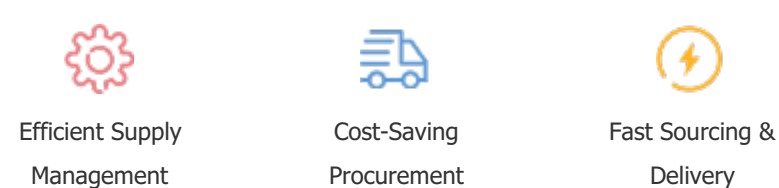
**Note:** The above table is for reference only. There may have some data bias for the uncontrollable factors.  
Contact us if you have any questions.

### Payment Support

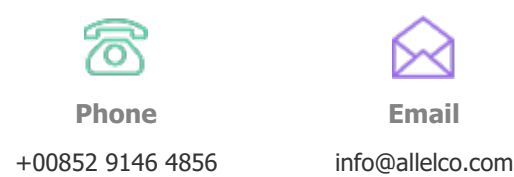
The payment method can be chosen from the methods shown below:  
Wire Transfer (T/T, Bank Transfer), Western Union, Credit card, PayPal.



### Your Faithful Supply Chain Partner -



Contact us if you have any questions.



### Certifications & Memberships



[View More](#)

### Contact us

Address: Flat/Rm C 13/F Harvard Commercial Building 105-111 Thomson Road, Wan Chai, Hong Kong  
Phone: +00852 9146 4856  
Fax: +00852 3010 8510  
Email: info@Allelco.com