

Image may be representation.
See specifications for product details.



ADP7102ACPZ-2.5-R7

| | |
|--------------------------|----------------------------------|
| Manufacturer Part Number | ADP7102ACPZ-2.5-R7 |
| Manufacturer | Analog Devices, Inc. |
| Allelco Part Number | 32D-ADP7102ACPZ-2.5-R7 |
| ECAD Model | PCB Symbol, Footprint & 3D Model |
| Parts Description | IC REG LINEAR 2.5V 300MA 8LFCSP |
| Package | 8-WFDFN Exposed Pad, CSP |
| Data sheet | ADP7102.pdf |
| RoHs Status | ROHS3 Compliant |

Get a Quote

ADP7102ACPZ-2.5-R7 - Analog Devices Inc..New Original in Stock. Download Linear Technology ADP7102ACPZ-2.5-R7 datasheet/specifications on AllelcoElec.com. Request a quote for ADP7102ACPZ-2.5-R7, please send us email: info@allelco.com

Specifications

ADP7102ACPZ-2.5-R7 Tech Specifications
ADP7102ACPZ-2.5-R7 - Analog Devices Inc. technical specifications, attributes, parameters

| Product Attribute | Attribute Value | Product Attribute | Attribute Value |
|------------------------------|--|--------------------------|---|
| Manufacturer | Analog Devices, Inc. | Output Type | Fixed |
| Voltage Dropout (Max) | - | Output Configuration | Positive |
| Voltage - Output (Min/Fixed) | 2.5V | Operating Temperature | -40°C ~ 125°C |
| Voltage - Output (Max) | - | Number of Regulators | 1 |
| Voltage - Input (Max) | 20V | Mounting Type | Surface Mount |
| Supplier Device Package | 8-LFCSP-WD (3x3) | Current - Supply (Max) | 1.4 mA |
| Series | - | Current - Quiescent (Iq) | 900 µA |
| Protection Features | Over Current, Over Temperature, Reverse Polarity | Current - Output | 300mA |
| Package / Case | 8-WFDFN Exposed Pad, CSP | Control Features | Enable, Power Good, Under Voltage Lockout |
| Package | Tape & Reel (TR) | Base Product Number | ADP7102 |
| PSRR | - | | |

Parts with Similar Specifications

The three parts on the right have similar specifications to Analog Devices Inc. ADP7102ACPZ-2.5-R7

| Product Attribute | | | | |
|------------------------------|--|--|--|--|
| Part Number | ADP7102ACPZ-2.5-R7 | ADP7102ACPZ-5.0-R7 | ADP7102ARDZ-1.5-R7 | ADP7102ACPZ-9.0-R7 |
| Manufacturer | Analog Devices Inc. | Analog Devices Inc. | Analog Devices Inc. | Analog Devices Inc. |
| Control Features | Enable, Power Good, Under Voltage Lockout | Enable, Power Good, Under Voltage Lockout | Enable, Power Good, Under Voltage Lockout | Enable, Power Good, Under Voltage Lockout |
| Voltage - Input (Max) | 20V | 20V | 20V | 20V |
| Protection Features | Over Current, Over Temperature, Reverse Polarity | Over Current, Over Temperature, Reverse Polarity | Over Current, Over Temperature, Reverse Polarity | Over Current, Over Temperature, Reverse Polarity |
| Series | - | - | - | - |
| Operating Temperature | -40°C ~ 125°C | -40°C ~ 125°C | -40°C ~ 125°C | -40°C ~ 125°C |
| Voltage Dropout (Max) | - | 0.325V @ 300mA | - | 0.325V @ 300mA |
| Voltage - Output (Min/Fixed) | 2.5V | 5V | 1.5V | 9V |
| Output Configuration | Positive | Positive | Positive | Positive |
| Current - Quiescent (Iq) | 900 µA | 900 µA | 900 µA | 900 µA |
| Package / Case | 8-WFDFN Exposed Pad, CSP | 8-WFDFN Exposed Pad, CSP | 8-SOIC (0.154', 3.90mm Width) Exposed Pad | 8-WFDFN Exposed Pad, CSP |
| Number of Regulators | 1 | 1 | 1 | 1 |
| Supplier Device Package | 8-LFCSP-WD (3x3) | 8-LFCSP-WD (3x3) | 8-SOIC-EP | 8-LFCSP-WD (3x3) |
| Current - Output | 300mA | 300mA | 300mA | 300mA |
| Base Product Number | ADP7102 | ADP7102 | ADP7102 | ADP7102 |
| Package | Tape & Reel (TR) | Tape & Reel (TR) | Tape & Reel (TR) | Tape & Reel (TR) |
| PSRR | - | 60dB ~ 50dB (10kHz ~ 100kHz) | - | - |
| Mounting Type | Surface Mount | Surface Mount | Surface Mount | Surface Mount |
| Output Type | Fixed | Fixed | Fixed | Fixed |
| Voltage - Output (Max) | - | - | - | - |
| Current - Supply (Max) | 1.4 mA | 1.4 mA | 1.4 mA | 1.4 mA |

ADP7102ACPZ-2.5-R7 Datasheet PDF

Download ADP7102ACPZ-2.5-R7 pdf datasheets and Analog Devices Inc. documentation for ADP7102ACPZ-2.5-R7 - Analog Devices Inc..

Datasheets

[ADP7102.pdf](#)

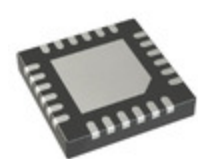
Other Related Documents

[Tape and Reel Packaging.pdf](#)

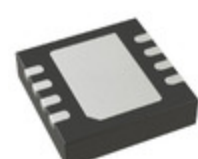


Customers Also Interested in

Recommended Products



ADP5589ACPZ-00-R7
Analog Devices Inc.
IC INTERFACE SPECIALIZED
24LFCSP



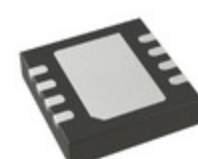
ADP7102ACPZ-5.0-R7
Analog Devices Inc.
IC REG LINEAR 5V 300MA 8LFCSP



ADP7102ARDZ-1.5-R7
Analog Devices Inc.
IC REG LINEAR 1.5V 300MA 8SOIC



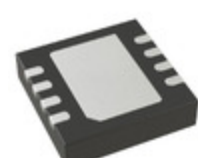
ADP7102ACPZ-2.5
ADI (Analog Devices, Inc.)



ADP7102ACPZ-9.0-R7
Analog Devices Inc.
IC REG LINEAR 9V 300MA 8LFCSP



ADP7102ACPZ-3.3
ADI (Analog Devices, Inc.)



ADP7102ACPZ-1.8-R7
Analog Devices Inc.
IC REG LINEAR 1.8V 300MA 8LFCSP



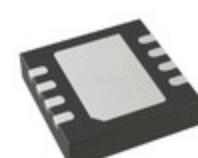
ADP667AN
Analog Devices Inc.
IC REG LDO 5V OR ADJ LIN 8-DIP



ADP7102ACPZ
ADI (Analog Devices, Inc.)



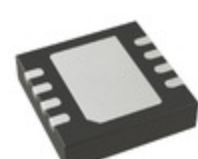
ADP667AR
Analog Devices Inc.
IC REG LDO 5V OR ADJ LIN 8-SOIC



ADP7102ACPZ-R7
Analog Devices Inc.
IC REG LIN POS ADJ 300MA 8LFCSP



ADP7102ARDZ-3.0-R7
Analog Devices Inc.
IC REG LINEAR 3V 300MA 8SOIC



ADP7102ACPZ-3.0-R7
Analog Devices Inc.
IC REG LINEAR 3V 300MA 8LFCSP



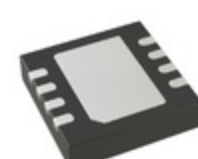
ADP667ANZ
Analog Devices Inc.
IC REG LIN POS ADJ 250MA 8-DIP



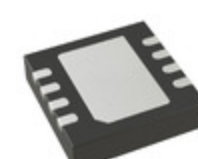
ADP667ARZ
ADI (Analog Devices, Inc.)
IC REG LIN POS ADJ 250MA 8SOIC



ADP5588ACPZ-R7
Analog Devices Inc.
IC INTERFACE SPECIALIZED
24LFCSP



ADP7102ACPZ-3.3-R7
Analog Devices Inc.
IC REG LINEAR 3.3V 300MA 8LFCSP



ADP7102ACPZ-1.5-R7
Analog Devices Inc.
IC REG LINEAR 1.5V 300MA 8LFCSP

Shipment

Delivery Time

In-stock items can be shipped within 24 hours. Some parts will be arranged for delivery within 1-2 days from the date all items arrive at our warehouse. And Allelco ships order once a day at about 17:00, except Sunday. Once the goods are shipped, the estimated delivery time depends on the shipping methods and Delivery destination. The table below shows are the logistic time for some common countries.

Delivery Cost

- > Use your express account for shipment if you have one.
 - > Use our account for the shipment. Refer to the table below for the approximate charges.
- (Different time frame / countries / package size has different price.)

Delivery Method

- > Global Common Shipment by DHL / UPS / FedEx / TNT / EMS / SF we support.
- > Others more shipping ways, please get in touch with your customer manager.

Common Countries Logistic Time Reference

| Region | Country | Logistic Time(Day) |
|-------------|----------------|--------------------|
| America | United States | 5 |
| | Brazil | 7 |
| Europe | Germany | 5 |
| | United Kingdom | 4 |
| | Italy | 5 |
| Oceania | Australia | 6 |
| | New Zealand | 7 |
| Asia | India | 6 |
| | Japan | 7 |
| Middle East | Israel | 6 |

DHL & FedEx Shipment Charges Reference

| Shipment charges(KG) | Reference DHL(USD\$) |
|----------------------|----------------------|
| 0.00kg-1.00kg | USD\$60.00 |
| 1.00kg-2.00kg | USD\$70.00 |
| 2.00kg-3.00kg | USD\$80.00 |

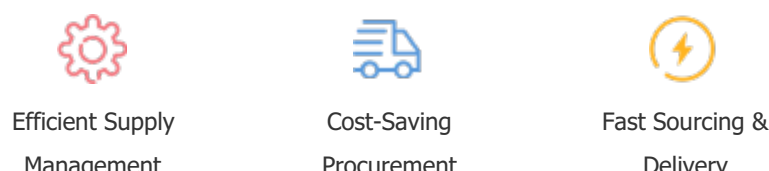
Note: The above table is for reference only. There may have some data bias for the uncontrollable factors.
Contact us if you have any questions.

Payment Support

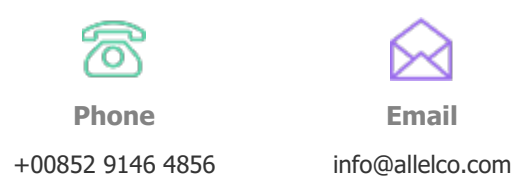
The payment method can be chosen from the methods shown below:
Wire Transfer (T/T, Bank Transfer), Western Union, Credit card,
PayPal.



Your Faithful Supply Chain Partner -



Contact us if you have any questions.



Certifications & Memberships



View More