

Image may be representation.  
See specifications for product details.



## P6SMB36CAT3G

Manufacturer Part Number	<b>P6SMB36CAT3G</b>
Manufacturer	<b>Littelfuse</b>
Allelco Part Number	32D-P6SMB36CAT3G
ECAD Model	PCB Symbol, Footprint & 3D Model
Parts Description	TVS DIODE 30.8VWM 49.9VC SMB
Package	DO-214AA, SMB
Data sheet	<b>Cylindrical Battery Holders.pdf</b>
RoHs Status	<b>ROHS3 Compliant</b>

**Get a Quote**

P6SMB36CAT3G - Littelfuse Inc..New Original in Stock. Download Linear Technology P6SMB36CAT3G datasheet/specifications on AllelcoElec.com.  
Request a quote for P6SMB36CAT3G, please send us email: [info@allelco.com](mailto:info@allelco.com)

### Specifications

P6SMB36CAT3G Tech Specifications

P6SMB36CAT3G - Littelfuse Inc. technical specifications, attributes, parameters

Product Attribute	Attribute Value	Product Attribute	Attribute Value
Manufacturer	Littelfuse	Package / Case	DO-214AA, SMB
Voltage - Reverse Standoff (Typ)	30.8V	Package	Tape & Reel (TR)
Voltage - Clamping (Max) @ Ipp	49.9V	Operating Temperature	-65°C ~ 150°C (TJ)
Voltage - Breakdown (Min)	34.2V	Mounting Type	Surface Mount
Type	Zener	Current - Peak Pulse (10/1000µs)	12A
Supplier Device Package	SMB	Capacitance @ Frequency	280pF @ 1MHz
Series	P6SMB	Bidirectional Channels	1
Power Line Protection	No	Base Product Number	P6SMB
Power - Peak Pulse	600W	Applications	General Purpose

### Parts with Similar Specifications

The three parts on the right have similar specifications to Littelfuse Inc. P6SMB36CAT3G

Product Attribute				
Part Number	P6SMB36CAT3G	P6SMB36CA	P6SMB39CA	P6SMB39A
Manufacturer	Littelfuse Inc.	Bourns Inc.	Meritek	Eaton - Electronics Division
Operating Temperature	-65°C ~ 150°C (TJ)	-55°C ~ 150°C (TJ)	-55°C ~ 150°C	-55°C ~ 150°C (TJ)
Package	Tape & Reel (TR)	Tape & Reel (TR)	Tape & Reel (TR)	Tape & Reel (TR)
Series	P6SMB	P6SMB	P6SMB	P6SMB
Current - Peak Pulse (10/1000µs)	12A	12.2A	11.13A	11.3A
Applications	General Purpose	General Purpose	General Purpose	Telecom
Mounting Type	Surface Mount	Surface Mount	Surface Mount	Surface Mount
Power - Peak Pulse	600W	600W	600W	600W
Voltage - Clamping (Max) @ Ipp	49.9V	49.9V	53.9V	53.9V
Power Line Protection	No	No	-	No
Bidirectional Channels	1	1	1	-
Voltage - Reverse Standoff (Typ)	30.8V	30.8V	33.3V	33.3V
Capacitance @ Frequency	280pF @ 1MHz	-	-	-
Supplier Device Package	SMB	SMB (DO-214AA)	-	SMB
Type	Zener	Zener	Zener	Zener
Base Product Number	P6SMB	P6SMB	-	-
Voltage - Breakdown (Min)	34.2V	34.2V	37.05V	37.1V
Package / Case	DO-214AA, SMB	DO-214AA, SMB	DO-214AA (SMB)	DO-214AA, SMB

### P6SMB36CAT3G Datasheet PDF

Download P6SMB36CAT3G pdf datasheets and Littelfuse Inc. documentation for P6SMB36CAT3G - Littelfuse Inc..

#### Datasheets

Cylindrical Battery Holders.pdf

#### PCN Assembly/Origin

2.73KHz.pdf

### Customers Also Interested in

#### Recommended Products

**P6SMB36CA**

Bourns Inc.  
TVS DIODE 30.8VWM 49.9VC  
DO214AA

**P6SMB39CA**

Meritek  
TVS DIODE 33.3VWM 53.9VC  
DO214AA

**P6SMB36CAHM4**

TAIWANSEMI

**P6SMB39A**

Eaton - Electronics Division  
TVS DIODE 33.3VWM 53.9VC SMB

**P6SMB36CA**

Good-Ark Semiconductor  
TVS, BI-DIR, 600W, 36V, DO-214AA

**P6SMB39AT3G**

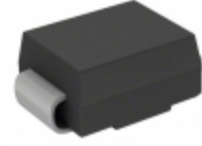
Littelfuse Inc.  
TVS DIODE 33.3VWM 53.9VC SMB

**P6SMB39AT3G**

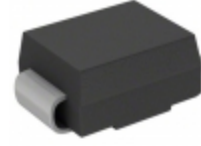
onsemi  
600 W TRANSIENT VOLTAGE  
SUPPRESS

**P6SMB36CAHE3/52**

Vishay General Semiconductor -  
Diodes Division  
TVS DIODE 30.8VWM 49.9VC  
DO214AA

**P6SMB36CA**

Littelfuse Inc.  
TVS DIODE 30.8VWM 49.9VC  
DO214AA

**P6SMB39A**

Littelfuse Inc.  
TVS DIODE 33.3VWM 53.9VC  
DO214AA

**P6SMB39A**

Bourns Inc.  
TVS DIODE 33.3VWM 53.9VC  
DO214AA

**P6SMB36CA**

Eaton - Electronics Division  
TVS DIODE 30.8VWM 49.9VC SMB

**P6SMB36CA**

Taiwan Semiconductor  
Corporation  
TVS DIODE 30.8VWM 49.9VC  
DO214AA

**P6SMB39A**

Meritek  
TVS DIODE 33.3VWM 53.9VC

**P6SMB36CAHM4G**

TSC (Taiwan Semiconductor)  
TVS DIODE 30.8V 49.9V DO214AA

**P6SMB39CA**

Littelfuse Inc.  
TVS DIODE 33.3VWM 53.9VC  
DO214AA

**P6SMB39A**

Taiwan Semiconductor  
Corporation  
TVS DIODE 33.3VWM 53.9VC  
DO214AA

**P6SMB36CA-E3/52**

Vishay General Semiconductor -  
Diodes Division  
TVS DIODE 30.8VWM 49.9VC  
DO214AA

## Shipment

### Delivery Time

In-stock items can be shipped within 24 hours. Some parts will be arranged for delivery within 1-2 days from the date all items arrive at our warehouse. And Allelco ships order once a day at about 17:00, except Sunday. Once the goods are shipped, the estimated delivery time depends on the shipping methods and Delivery destination. The table below shows are the logistic time for some common countries.

### Delivery Cost

> Use your express account for shipment if you have one.

> Use our account for the shipment. Refer to the table below for the approximate charges.

(Different time frame / countries / package size has different price.)

### Delivery Method

> Global Common Shipment by DHL / UPS / FedEx / TNT / EMS / SF we support.

> Others more shipping ways, please get in touch with your customer manager.

Common Countries Logistic Time Reference		
Region	Country	Logistic Time(Day)
America	United States	5
	Brazil	7
Europe	Germany	5
	United Kingdom	4
	Italy	5
Oceania	Australia	6
	New Zealand	7
Asia	India	6
	Japan	7
Middle East	Israel	6

DHL & FedEx Shipment Charges Reference	
Shipment charges(KG)	Reference DHL(USD\$)
0.00kg-1.00kg	USD\$60.00
1.00kg-2.00kg	USD\$70.00
2.00kg-3.00kg	USD\$80.00

Note: The above table is for reference only. There may have some data bias for the uncontrollable factors.

Contact us if you have any questions.

## Payment Support

The payment method can be chosen from the methods shown below:

Wire Transfer (T/T, Bank Transfer), Western Union, Credit card,  
PayPal.



## Your Faithful Supply Chain Partner -



Efficient Supply  
Management



Cost-Saving  
Procurement



Fast Sourcing &  
Delivery

Contact us if you have any questions.



Phone  
+00852 9146 4856



Email  
info@allelco.com

## Certifications & Memberships



[View More](#)