

Image may be representation.
See specifications for product details.



MCP1727-ADJE/MF

Manufacturer Part Number	MCP1727-ADJE/MF
Manufacturer	Microchip Technology
Allelco Part Number	32D-MCP1727-ADJE/MF
ECAD Model	PCB Symbol, Footprint & 3D Model
Parts Description	IC REG LINEAR POS ADJ 1.5A 8DFN
Package	8-VDFN Exposed Pad
Data sheet	Cylindrical Battery Holders.pdf
RoHs Status	ROHS3 Compliant

[Get a Quote](#)

MCP1727-ADJE/MF - Microchip Technology. New Original in Stock. Download Linear Technology MCP1727-ADJE/MF datasheet/specifications on AllelcoElec.com. Request a quote for MCP1727-ADJE/MF, please send us email: info@allelco.com

Specifications

MCP1727-ADJE/MF Tech Specifications
MCP1727-ADJE/MF - Microchip Technology technical specifications, attributes, parameters

Product Attribute	Attribute Value	Product Attribute	Attribute Value
Manufacturer	Microchip Technology	PSRR	60dB (100Hz)
Voltage Dropout (Max)	0.55V @ 1.5A	Output Type	Adjustable
Voltage - Output (Min/Fixed)	0.8V	Output Configuration	Positive
Voltage - Output (Max)	5V	Operating Temperature	-40°C ~ 125°C
Voltage - Input (Max)	6V	Number of Regulators	1
Supplier Device Package	8-DFN (3x3)	Mounting Type	Surface Mount
Series	-	Current - Quiescent (Iq)	220 µA
Protection Features	Over Temperature, Short Circuit, Under Voltage Lockout (UVLO)	Current - Output	1.5A
Package / Case	8-VDFN Exposed Pad	Control Features	Enable, Power Good
Package	Tube	Base Product Number	MCP1727

Parts with Similar Specifications

The three parts on the right have similar specifications to Microchip Technology MCP1727-ADJE/MF

Product Attribute				
Part Number	MCP1727-ADJE/MF	MCP1727-3302E/SN	MCP1727-3302E/MF	MCP1726T-ADJE/MF
Manufacturer	Microchip Technology	Microchip Technology	Microchip Technology	Microchip Technology
Current - Quiescent (Iq)	220 µA	220 µA	220 µA	220 µA
Output Configuration	Positive	Positive	Positive	Positive
Series	-	-	-	-
Voltage - Output (Min/Fixed)	0.8V	3.3V	3.3V	0.8V
PSRR	60dB (100Hz)	60dB (100Hz)	60dB (100Hz)	54dB (100Hz)
Operating Temperature	-40°C ~ 125°C	-40°C ~ 125°C	-40°C ~ 125°C	-40°C ~ 125°C (TJ)
Output Type	Adjustable	Fixed	Fixed	Adjustable
Control Features	Enable, Power Good	Enable, Power Good	Enable, Power Good	Enable, Power Good
Number of Regulators	1	1	1	1
Supplier Device Package	8-DFN (3x3)	8-SOIC	8-DFN (3x3)	8-DFN (3x3)
Voltage Dropout (Max)	0.55V @ 1.5A	0.55V @ 1.5A	0.55V @ 1.5A	0.5V @ 1A
Voltage - Input (Max)	6V	6V	6V	6V
Base Product Number	MCP1727	MCP1727	MCP1727	MCP1726
Voltage - Output (Max)	5V	-	-	5V
Mounting Type	Surface Mount	Surface Mount	Surface Mount	Surface Mount
Protection Features	Over Temperature, Short Circuit, Under Voltage Lockout (UVLO)	Over Temperature, Short Circuit, Under Voltage Lockout (UVLO)	Over Temperature, Short Circuit, Under Voltage Lockout (UVLO)	Over Temperature, Short Circuit, Under Voltage Lockout (UVLO)
Package / Case	8-VDFN Exposed Pad	8-SOIC (0.154", 3.90mm Width)	8-VDFN Exposed Pad	8-VDFN Exposed Pad
Package	Tube	Tube	Tube	Tape & Reel (TR)
Current - Output	1.5A	1.5A	1.5A	1A

MCP1727-ADJE/MF Datasheet PDF

Download MCP1727-ADJE/MF pdf datasheets and Microchip Technology documentation for MCP1727-ADJE/MF - Microchip Technology.

Datasheets

[Cylindrical Battery Holders.pdf](#)

PCN Packaging

[Label and Packing Changes 23/Sep/2015.pdf](#)

[Packing Changes 10/Oct/2016.pdf](#)

Design Resources

[MCP1727-ADJE/MF Design Resources](#)

PCN Design/Specification

MCP1727 13/Aug/2021.pdf

MCP1727 24/May/2021.pdf

Customers Also Interested in

Recommended Products

					
MCP1727-3302E/SN Microchip Technology IC REG LINEAR 3.3V 1.5A 8SOIC	MCP17529EJ Freescale / NXP Semiconductors	MCP1727-3302E/MF Microchip Technology IC REG LINEAR 3.3V 1.5A 8DFN	MCP1726T-ADJE/MF Microchip Technology IC REG LINEAR POS ADJ 1A 8DFN	MCP1754-I/SN Micrel / Microchip Technology	MCP1727-5002E/SN Microchip Technology IC REG LINEAR 5V 1.5A 8SOIC
					
MCP1727T-3002E/MF Microchip Technology IC REG LINEAR 3V 1.5A 8DFN	MCP1727-2502E/MF Microchip Technology IC REG LINEAR 2.5V 1.5A 8DFN	MCP1727T-ADJE/MF Microchip Technology IC REG LINEAR POS ADJ 1.5A 8DFN	MCP1727-3002E/MF Microchip Technology IC REG LINEAR 3V 1.5A 8DFN	MCP1726T-3302E/SN Microchip Technology IC REG LINEAR 3.3V 1A 8SOIC	MCP1727T-3302E/MF Microchip Technology IC REG LINEAR 3.3V 1.5A 8DFN
					
MCP1726T-5002E/MF Microchip Technology IC REG LINEAR 5V 1A 8DFN	MCP1727T-ADJE/SN Microchip Technology IC REG LINEAR POS ADJ 1.5A 8SOIC	MCP1726T-ADJE/SN Microchip Technology IC REG LINEAR POS ADJ 1A 8SOIC	MCP1754S-3302E/DB Micrel / Microchip Technology	MCP1754ST-1802E/CB Microchip Technology IC REG LIN 1.8V 150MA SOT23A-3	MCP1727-ADJE/SN Microchip Technology IC REG LINEAR POS ADJ 1.5A 8SOIC

Shipment

Delivery Time

In-stock items can be shipped within 24 hours. Some parts will be arranged for delivery within 1-2 days from the date all items arrive at our warehouse. And Allelco ships order once a day at about 17:00, except Sunday. Once the goods are shipped, the estimated delivery time depends on the shipping methods and Delivery destination. The table below shows are the logistic time for some common countries.

Delivery Cost

- > Use your express account for shipment if you have one.
 - > Use our account for the shipment. Refer to the table below for the approximate charges.
- (Different time frame / countries / package size has different price.)

Delivery Method

- > Global Common Shipment by DHL / UPS / FedEx / TNT / EMS / SF we support.
- > Others more shipping ways, please get in touch with your customer manager.

Common Countries Logistic Time Reference		
Region	Country	Logistic Time(Day)
America	United States	5
	Brazil	7
Europe	Germany	5
	United Kingdom	4
	Italy	5
Oceania	Australia	6
	New Zealand	7
Asia	India	6
	Japan	7
Middle East	Israel	6

DHL & FedEx Shipment Charges Reference	
Shipment charges(KG)	Reference DHL(USD\$)
0.00kg-1.00kg	USD\$60.00
1.00kg-2.00kg	USD\$70.00
2.00kg-3.00kg	USD\$80.00

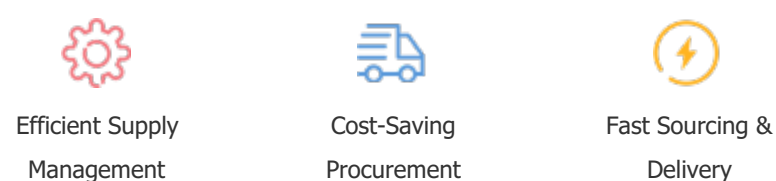
Note: The above table is for reference only. There may have some data bias for the uncontrollable factors. Contact us if you have any questions.

Payment Support

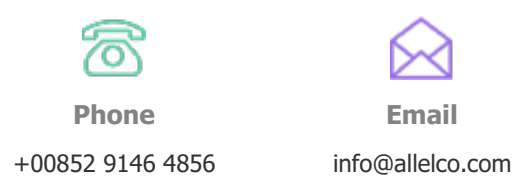
The payment method can be chosen from the methods shown below:
Wire Transfer (T/T, Bank Transfer), Western Union, Credit card, PayPal.



Your Faithful Supply Chain Partner -



Contact us if you have any questions.



Certifications & Memberships



[View More](#)

Contact us

Address: Flat/Rm C 13/F Harvard Commercial Building 105-111 Thomson Road, Wan Chai, Hong Kong
Phone: +00852 9146 4856
Fax: +00852 3010 8510
Email: info@Allelco.com