



Image may be representation.  
See specifications for product details.



## VS-26MB10A

Manufacturer Part Number	<b>VS-26MB10A</b>
Manufacturer	<b>Vishay General Semiconductor – Diodes Division</b>
Allelco Part Number	32D-VS-26MB10A
ECAD Model	Request Free CAD Models
Parts Description	BRIDGE RECT 1PHASE 100V 25A D-34
Package	4-Square, D-34
Data sheet	<a href="#">Cylindrical Battery Holders.pdf</a>
RoHs Status	<b>ROHS3 Compliant</b>

**Get a Quote**

VS-26MB10A - Vishay General Semiconductor - Diodes Division. New Original in Stock. Download Linear Technology VS-26MB10A datasheet/specifications on AllelcoElec.com.  
Request a quote for VS-26MB10A, please send us email: [info@allelco.com](mailto:info@allelco.com)

### Specifications

VS-26MB10A Tech Specifications  
VS-26MB10A - Vishay General Semiconductor - Diodes Division technical specifications, attributes, parameters

Product Attribute	Attribute Value	Product Attribute	Attribute Value
Manufacturer	Vishay General Semiconductor – Diodes Division	Operating Temperature	-40°C ~ 150°C (TJ)
Voltage - Peak Reverse (Max)	100 V	Mounting Type	QC Terminal
Technology	Standard	Diode Type	Single Phase
Supplier Device Package	D-34	Current - Reverse Leakage @ Vr	10 µA @ 100 V
Series	-	Current - Average Rectified (Io)	25 A
Package / Case	4-Square, D-34	Base Product Number	26MB10
Package	Bulk		

### Parts with Similar Specifications

The three parts on the right have similar specifications to Vishay General Semiconductor - Diodes Division VS-26MB10A

Product Attribute				
Part Number	VS-26MB10A	VS-26MB80A	VS-26MB60A	VS-26MB100A
Manufacturer	Vishay General Semiconductor - Diodes Division	Vishay General Semiconductor - Diodes Division	Vishay General Semiconductor - Diodes Division	Vishay General Semiconductor - Diodes Division
Voltage - Peak Reverse (Max)	100 V	800 V	600 V	1 kV
Series	-	-	-	-
Supplier Device Package	D-34	D-34	D-34	D-34
Diode Type	Single Phase	Single Phase	Single Phase	Single Phase
Base Product Number	26MB10	26MB80	26MB60	26MB100
Package / Case	4-Square, D-34	4-Square, D-34	4-Square, D-34	4-Square, D-34
Current - Average Rectified (Io)	25 A	25 A	25 A	25 A
Current - Reverse Leakage @ Vr	10 µA @ 100 V	10 µA @ 800 V	10 µA @ 600 V	10 µA @ 1000 V
Operating Temperature	-40°C ~ 150°C (TJ)	-55°C ~ 150°C (TJ)	-55°C ~ 150°C (TJ)	-55°C ~ 150°C (TJ)
Package	Bulk	Bulk	Bulk	Bulk
Mounting Type	QC Terminal	QC Terminal	QC Terminal	QC Terminal
Technology	Standard	Standard	Standard	Standard

### VS-26MB10A Datasheet PDF

Download VS-26MB10A pdf datasheets and Vishay General Semiconductor - Diodes Division documentation for VS-26MB10A - Vishay General Semiconductor - Diodes Division.

#### Datasheets

[Cylindrical Battery Holders.pdf](#)

#### Other Related Documents

[Cylindrical Battery Holders.pdf](#)

#### PCN Design/Specification

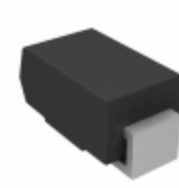
[Marking 16/Apr/2019.pdf](#)

[Mult Dev BOM Chg 31/Aug/2020.pdf](#)

### Customers Also Interested in

#### Recommended Products

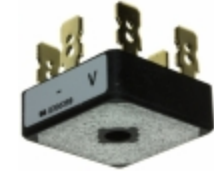
<b>VS-20TQ045STRLPBF</b>	<b>VS-26MB80A</b>	<b>VS-26MB60A</b>	<b>VS-26MB100A</b>	<b>VS-25F100</b>	<b>VS-26MB40A</b>
Vishay General Semiconductor - Diodes Division DIODE SCHOTTKY 45V 20A T0263AB	Vishay General Semiconductor - Diodes Division BRIDGE RECT 1PHASE 800V 25A D-34	Vishay General Semiconductor - Diodes Division BRIDGE RECT 1PHASE 600V 25A D-34	Vishay General Semiconductor - Diodes Division BRIDGE RECT 1PHASE 1KV 25A D-34	Vishay General Semiconductor - Diodes Division DIODE GEN PURP 1KV 25A DO203AA	Vishay General Semiconductor - Diodes Division BRIDGE RECT 1PHASE 400V 25A D-34

**VS-220CNQ030PBF**Vishay General Semiconductor - Diodes Division  
DIODE SCHOTTKY 30V 110A TO244**VS-26MT140**Vishay General Semiconductor - Diodes Division  
BRIDGE RECT 3P 1.4KV 25A D-63**VS-20MQ100TRPBF**

Electro-Films (EFI) / Vishay

**VS-24MB-NR**

TAKAMISAW

**VS-20MQ100NPBF**Vishay General Semiconductor - Diodes Division  
DIODE SCHOTTKY 100V 2.1A DO214AC**VS-26MT10**Vishay General Semiconductor - Diodes Division  
BRIDGE RECT 3PHASE 100V 25A D-63**VS-26MB120A**Vishay General Semiconductor - Diodes Division  
BRIDGE RECT 1P 1.2KV 25A D-34**VS-20TQ045PBF**Vishay General Semiconductor - Diodes Division  
DIODE SCHOTTKY 45V 20A TO220AC**VS-26MB20A**Vishay General Semiconductor - Diodes Division  
BRIDGE RECT 1PHASE 200V 25A D-34**VS-26MT160**Vishay General Semiconductor - Diodes Division  
BRIDGE RECT 3P 1.6KV 25A D-63**VS-26MB160A**Vishay General Semiconductor - Diodes Division  
BRIDGE RECT 1P 1.6KV 25A D-34**VS-25TTS12-M3**Vishay General Semiconductor - Diodes Division  
SCR 1.2KV 25A TO220AB

## Shipment

### Delivery Time

In-stock items can be shipped within 24 hours. Some parts will be arranged for delivery within 1-2 days from the date all items arrive at our warehouse. And Allelco ships order once a day at about 17:00, except Sunday. Once the goods are shipped, the estimated delivery time depends on the shipping methods and Delivery destination. The table below shows are the logistic time for some common countries.

### Delivery Cost

&gt; Use your express account for shipment if you have one.

&gt; Use our account for the shipment. Refer to the table below for the approximate charges.

(Different time frame / countries / package size has different price.)

### Delivery Method

&gt; Global Common Shipment by DHL / UPS / FedEx / TNT / EMS / SF we support.

&gt; Others more shipping ways, please get in touch with your customer manager.

**Common Countries Logistic Time Reference**

Region	Country	Logistic Time(Day)
America	United States	5
	Brazil	7
Europe	Germany	5
	United Kingdom	4
	Italy	5
Oceania	Australia	6
	New Zealand	7
Asia	India	6
	Japan	7
Middle East	Israel	6

**DHL & FedEx Shipment Charges Reference**

Shipment charges(KG)	Reference DHL(USD\$)
0.00kg-1.00kg	USD\$60.00
1.00kg-2.00kg	USD\$70.00
2.00kg-3.00kg	USD\$80.00

**Note:** The above table is for reference only. There may have some data bias for the uncontrollable factors.

Contact us if you have any questions.

## Payment Support

The payment method can be chosen from the methods shown below:

Wire Transfer (T/T, Bank Transfer), Western Union, Credit card, PayPal.



## Your Faithful Supply Chain Partner -



Efficient Supply Management



Cost-Saving Procurement



Fast Sourcing &amp; Delivery

**Contact us if you have any questions.**

Phone

+00852 9146 4856



Email

info@allelco.com

## Certifications & Memberships

[View More](#)

## Contact us

Address: Flat/Rm C 13/F Harvard Commercial Building 105-111 Thomson Road, Wan Chai, Hong Kong

Phone: +00852 9146 4856

Fax: +00852 3010 8510

Email: info@Allelco.com

Copyright © 2012-2023 AllelcoElec.com. All rights reserved.