

Image may be representation.
See specifications for product details.



EPM7128STC100-15F

Manufacturer Part Number **EPM7128STC100-15F**

Manufacturer **Intel**

Allelco Part Number **32D-EPM7128STC100-15F**

ECAD Model [Request Free CAD Models](#)

Parts Description **IC CPLD 128MC 15NS 100TQFP**

Package **100-TQFP**

Data sheet **MAX 7000.pdf**

100-TQFP Pkg Info.pdf

Get a Quote

EPM7128STC100-15F - Intel.New Original in Stock. Download Linear Technology EPM7128STC100-15F datasheet/specifications on AllelcoElec.com.

Request a quote for EPM7128STC100-15F, please send us email: info@allelco.com

Specifications

EPM7128STC100-15F Tech Specifications

EPM7128STC100-15F - Intel technical specifications, attributes, parameters

Product Attribute	Attribute Value	Product Attribute	Attribute Value
Manufacturer	Intel	Number of Macrocells	128
Voltage Supply - Internal	4.75V ~ 5.25V	Number of Logic Elements/Blocks	8
Supplier Device Package	100-TQFP (14x14)	Number of I/O	84
Series	MAX® 7000S	Number of Gates	2500
Programmable Type	In System Programmable	Mounting Type	Surface Mount
Package / Case	100-TQFP	Delay Time tpd(1) Max	15 ns
Package	Tray	Base Product Number	EPM7128
Operating Temperature	0°C ~ 70°C (TA)		

Parts with Similar Specifications

The three parts on the right have similar specifications to Intel EPM7128STC100-15F

Product Attribute				
Part Number	EPM7128STC100-15F	EPM7128STC100-15N	EPM7128ST1100-10N	EPM7128STC100-10F
Manufacturer	Intel	Intel	Intel	Intel
Series	MAX® 7000S	MAX® 7000S	MAX® 7000S	MAX® 7000S
Operating Temperature	0°C ~ 70°C (TA)	0°C ~ 70°C (TA)	-40°C ~ 85°C (TA)	0°C ~ 70°C (TA)
Supplier Device Package	100-TQFP (14x14)	100-TQFP (14x14)	100-TQFP (14x14)	100-TQFP (14x14)
Voltage Supply - Internal	4.75V ~ 5.25V	4.75V ~ 5.25V	4.5V ~ 5.5V	4.75V ~ 5.25V
Programmable Type	In System Programmable	In System Programmable	In System Programmable	In System Programmable
Number of I/O	84	84	84	84
Number of Gates	2500	2500	2500	2500
Package / Case	100-TQFP	100-TQFP	100-TQFP	100-TQFP
Package	Tray	Tray	Tray	Tray
Base Product Number	EPM7128	EPM7128	EPM7128	EPM7128
Mounting Type	Surface Mount	Surface Mount	Surface Mount	Surface Mount
Delay Time tpd(1) Max	15 ns	15 ns	10 ns	10 ns
Number of Macrocells	128	128	128	128
Number of Logic Elements/Blocks	8	8	8	8

EPM7128STC100-15F Datasheet PDF

Download EPM7128STC100-15F pdf datasheets and Intel documentation for EPM7128STC100-15F - Intel.

Datasheets

[MAX 7000.pdf](#)

[100-TQFP Pkg Info.pdf](#)

PCN Packaging

[All Dev Pkg Chg 1/Aug/2018.pdf](#)

PCN Obsolescence/ EOL

[APEX/FLEX/MAX Dev EOL 28/Dec/2005.pdf](#)

PCN Design/Specification

[Appearance Update 30/Mar/2015.pdf](#)

Customers Also Interested in

Recommended Products



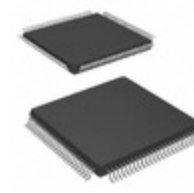
EPM7128STC100-10W

Altera (Intel)



EPM7128STC100-15N

Intel
IC CPLD 128MC 15NS 100TQFP



EPM7128STI100-10N

Intel
IC CPLD 128MC 10NS 100TQFP



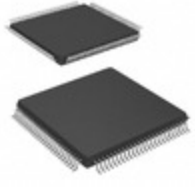
EPM7128STC100-10F

Intel
IC CPLD 128MC 10NS 100TQFP



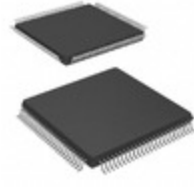
EPM7128SQI160-10N

Intel
IC CPLD 128MC 10NS 160QFP



EPM7128STC100-7F

Intel
IC CPLD 128MC 7.5NS 100TQFP



EPM7128STC100-15

Intel
IC CPLD 128MC 15NS 100TQFP



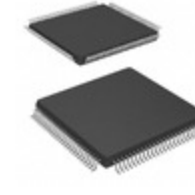
EPM7128STI100-10W

Altera (Intel)



EPM7128SQI160-10

Intel
IC CPLD 128MC 10NS 160QFP



EPM7128STC100-6

Intel
IC CPLD 128MC 6NS 100TQFP



EPM7128ST100-10N

Altera (Intel)



EPM7128STC100-10

Intel
IC CPLD 128MC 10NS 100TQFP



EPM7128STI100-10

Intel
IC CPLD 128MC 10NS 100TQFP



EPM7128STC100-7N

Intel
IC CPLD 128MC 7.5NS 100TQFP



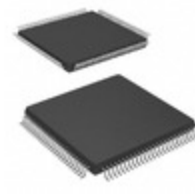
EPM7128STC100-10N

Intel
IC CPLD 128MC 10NS 100TQFP



EPM7128STC100-7

Intel
IC CPLD 128MC 7.5NS 100TQFP



EPM7128STC100-6N

Intel
IC CPLD 128MC 6NS 100TQFP

Shipment

Delivery Time

In-stock items can be shipped within 24 hours. Some parts will be arranged for delivery within 1-2 days from the date all items arrive at our warehouse. And Allelco ships order once a day at about 17:00, except Sunday. Once the goods are shipped, the estimated delivery time depends on the shipping methods and Delivery destination. The table below shows are the logistic time for some common countries.

Delivery Cost

> Use your express account for shipment if you have one.

> Use our account for the shipment. Refer to the table below for the approximate charges.

(Different time frame / countries / package size has different price.)

Delivery Method

> Global Common Shipment by DHL / UPS / FedEx / TNT / EMS / SF we support.

> Others more shipping ways, please get in touch with your customer manager.

Common Countries Logistic Time Reference		
Region	Country	Logistic Time(Day)
America	United States	5
	Brazil	7
Europe	Germany	5
	United Kingdom	4
	Italy	5
Oceania	Australia	6
	New Zealand	7
Asia	India	6
	Japan	7
Middle East	Israel	6

DHL & FedEx Shipment Charges Reference	
Shipment charges(KG)	Reference DHL(USD\$)
0.00kg-1.00kg	USD\$60.00
1.00kg-2.00kg	USD\$70.00
2.00kg-3.00kg	USD\$80.00

Note: The above table is for reference only. There may have some data bias for the uncontrollable factors.

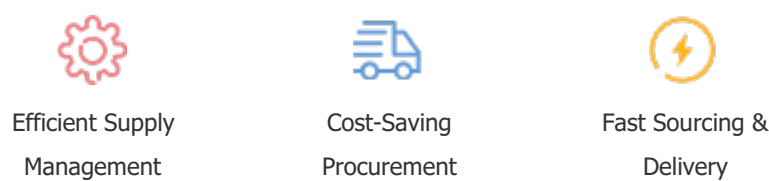
Contact us if you have any questions.

Payment Support

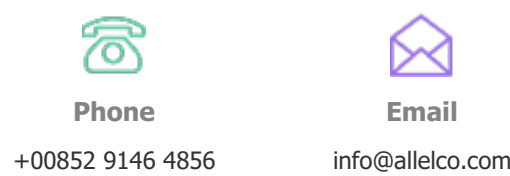
The payment method can be chosen from the methods shown below:
Wire Transfer (T/T, Bank Transfer), Western Union, Credit card, PayPal.



Your Faithful Supply Chain Partner -



Contact us if you have any questions.



Certifications & Memberships



[View More](#)



Contact us

Address: Flat/Rm C 13/F Harvard Commercial Building 105-111 Thomson Road, Wan Chai, Hong Kong

Phone: +00852 9146 4856

Fax: +00852 3010 8510

Email: info@Allelco.com

Copyright © 2012-2023 AllelcoElec.com. All rights reserved.