

Image may be representation.  
See specifications for product details.



## MAX9018AEKA+T

Manufacturer Part Number **MAX9018AEKA+T**

Manufacturer **Maxim Integrated**

Allelco Part Number **32D-MAX9018AEKA+T**

ECAD Model [Request Free CAD Models](#)

Parts Description **IC COMPARATOR 2 W/VOLT REF SOT23**

Package **SOT-23-8**

Data sheet **[Cylindrical Battery Holders.pdf](#)**

**[MAX9015-20.pdf](#)**

RoHs Status **ROHS3 Compliant**

**Get a Quote**

MAX9018AEKA+T - Analog Devices Inc./Maxim Integrated.New Original in Stock. Download Linear Technology MAX9018AEKA+T datasheet/specifications on AllelcoElec.com.

Request a quote for MAX9018AEKA+T, please send us email: [info@allelco.com](mailto:info@allelco.com)

### Specifications

MAX9018AEKA+T Tech Specifications

MAX9018AEKA+T - Analog Devices Inc./Maxim Integrated technical specifications, attributes, parameters

Product Attribute	Attribute Value	Product Attribute	Attribute Value
Manufacturer	Maxim Integrated	Operating Temperature	-40°C ~ 85°C
Voltage - Supply, Single/Dual (±)	1.8V ~ 5.5V	Number of Elements	2
Voltage - Input Offset (Max)	5mV @ 5V	Mounting Type	Surface Mount
Type	with Voltage Reference	Hysteresis	4mV
Supplier Device Package	SOT-23-8	Current - Quiescent (Max)	2.8µA
Series	Beyond-the-Rails™	Current - Output (Typ)	50mA
Propagation Delay (Max)	31µs	Current - Input Bias (Max)	0.001µA @ 5V
Package / Case	SOT-23-8	CMRR, PSRR (Typ)	80dB PSRR
Package	Tape & Reel (TR)	Base Product Number	MAX9018
Output Type	CMOS, Open-Drain, Rail-to-Rail		

### Parts with Similar Specifications

The three parts on the right have similar specifications to Analog Devices Inc./Maxim Integrated MAX9018AEKA+T

Product Attribute				
Part Number	MAX9018AEKA+T	MAX9018AEKA-T	MAX9011EUT+T	MAX9013EUA+T
Manufacturer	Analog Devices Inc./Maxim Integrated	Analog Devices Inc./Maxim Integrated	Analog Devices Inc./Maxim Integrated	Analog Devices Inc./Maxim Integrated
CMRR, PSRR (Typ)	80dB PSRR	80dB PSRR	95dB CMRR, 82dB PSRR	95dB CMRR, 82dB PSRR
Operating Temperature	-40°C ~ 85°C	-40°C ~ 85°C	-40°C ~ 85°C	-40°C ~ 85°C
Current - Output (Typ)	50mA	50mA	40mA	40mA
Output Type	CMOS, Open-Drain, Rail-to-Rail	CMOS, Open-Drain, Rail-to-Rail	TTL	Complementary, TTL
Number of Elements	2	2	1	1
Package	Tape & Reel (TR)	Tape & Reel (TR)	Tape & Reel (TR)	Tape & Reel (TR)
Voltage - Input Offset (Max)	5mV @ 5V	5mV @ 5V	5mV @ 5.5V	3mV @ 5.5V
Hysteresis	4mV	4mV	-	-
Series	Beyond-the-Rails™	Beyond-the-Rails™	-	-
Propagation Delay (Max)	31µs	31µs	9ns	9ns
Base Product Number	MAX9018	MAX9018	MAX9011	MAX9013
Package / Case	SOT-23-8	SOT-23-8	SOT-23-6	8-TSSOP, 8-MSOP (0.118", 3.00mm Width)
Voltage - Supply, Single/Dual (±)	1.8V ~ 5.5V	1.8V ~ 5.5V	4.5V ~ 5.5V	4.5V ~ 5.5V
Type	with Voltage Reference	with Voltage Reference	with Latch	with Latch
Supplier Device Package	SOT-23-8	SOT-23-8	SOT-6	8-uMAX/uSOP
Current - Input Bias (Max)	0.001µA @ 5V	0.001µA @ 5V	0.5µA @ 5V	0.5µA @ 5V
Current - Quiescent (Max)	2.8µA	2.8µA	2.1mA	2.3mA
Mounting Type	Surface Mount	Surface Mount	Surface Mount	Surface Mount

### MAX9018AEKA+T Datasheet PDF

Download MAX9018AEKA+T pdf datasheets and Analog Devices Inc./Maxim Integrated documentation for MAX9018AEKA+T - Analog Devices Inc./Maxim Integrated.

#### Datasheets

[Cylindrical Battery Holders.pdf](#)

#### Environmental Information

[Maxim Integrated REACH.pdf](#)

[Maxim Integrated RoHS Cert.pdf](#)

[Red Phosphorous Certificate.pdf](#)

#### Part Numbering Guide

## Application Notes

Adding Extra Hysteresis to Comparators.pdf

White-LED Driver Includes Overtemperature Protecti.pdf

## HTML Datasheet

MAX9015-20.pdf

## Customers Also Interested in

### Recommended Products



#### MAX9018AEKA-T

Analog Devices Inc./Maxim Integrated  
IC COMPARATOR 2 W/VOLT REF SOT23



#### MAX9011EUT+T

Analog Devices Inc./Maxim Integrated  
IC COMPARATOR 1 W/LATCH SOT6



#### MAX9013EUA+T

Analog Devices Inc./Maxim Integrated  
IC COMPARATOR 1 W/LATCH 8UMAX



#### MAX9013ESA+

Analog Devices Inc./Maxim Integrated  
IC COMPARATOR 1 W/LATCH 8SOIC



#### MAX901BCPE

Analog Devices Inc./Maxim Integrated  
IC COMPARATOR 4 GEN PUR 16DIP



#### MAX9017BEKA+T

Analog Devices Inc./Maxim Integrated  
IC COMPARATOR 2 W/VOLT REF SOT23



#### MAX901BCSE

Analog Devices Inc./Maxim Integrated  
IC COMPARATOR 4 GEN PUR 16SOIC



#### MAX9012EUA+T

Analog Devices Inc./Maxim Integrated  
IC COMPARATOR 2 GEN PUR 8UMAX



#### MAX901ACSE+T

Analog Devices Inc./Maxim Integrated  
IC COMPARATOR 4 GEN PUR 16SOIC



#### MAX9017AEKA/V+T

Analog Devices Inc./Maxim Integrated  
IC COMPARATOR 2 W/VOLT REF SOT23



#### MAX901ACSE

Analog Devices Inc./Maxim Integrated  
IC COMPARATOR 4 GEN PUR 16SOIC



#### MAX9017AEKA-T

Analog Devices Inc./Maxim Integrated  
IC COMPARATOR 2 W/VOLT REF SOT23



#### MAX901AESE-T

Analog Devices Inc./Maxim Integrated  
IC COMPARATOR 4 GEN PUR 16SOIC



#### MAX9018BEKA+T

Analog Devices Inc./Maxim Integrated  
IC COMPARATOR 2 W/VOLT REF SOT23



#### MAX9016AEKA+T

Analog Devices Inc./Maxim Integrated  
IC COMPARATOR 1 W/VOLT REF SOT23



#### MAX9015AEKA+T

Analog Devices Inc./Maxim Integrated  
IC COMPARATOR 1 W/VOLT REF SOT23



#### MAX901BCSE+T

Analog Devices Inc./Maxim Integrated  
IC COMPARATOR 4 GEN PUR 16SOIC



#### MAX9019EKA+T

Analog Devices Inc./Maxim Integrated  
IC COMPARATOR 2 GEN PUR SOT23-8

## Shipment

### Delivery Time

In-stock items can be shipped within 24 hours. Some parts will be arranged for delivery within 1-2 days from the date all items arrive at our warehouse. And Allelco ships order once a day at about 17:00, except Sunday. Once the goods are shipped, the estimated delivery time depends on the shipping methods and Delivery destination. The table below shows are the logistic time for some common countries.

### Delivery Cost

- > Use your express account for shipment if you have one.
  - > Use our account for the shipment. Refer to the table below for the approximate charges.
- (Different time frame / countries / package size has different price.)

### Delivery Method

- > Global Common Shipment by DHL / UPS / FedEx / TNT / EMS / SF we support.
- > Others more shipping ways, please get in touch with your customer manager.

Common Countries Logistic Time Reference

Region	Country	Logistic Time(Day)
America	United States	5
	Brazil	7
Europe	Germany	5
	United Kingdom	4
	Italy	5
Oceania	Australia	6
	New Zealand	7
Asia	India	6
	Japan	7
Middle East	Israel	6

DHL & FedEx Shipment Charges Reference

Shipment charges(KG)	Reference DHL(USD\$)
0.00kg-1.00kg	USD\$60.00
1.00kg-2.00kg	USD\$70.00
2.00kg-3.00kg	USD\$80.00

Note: The above table is for reference only. There may have some data bias for the uncontrollable factors.

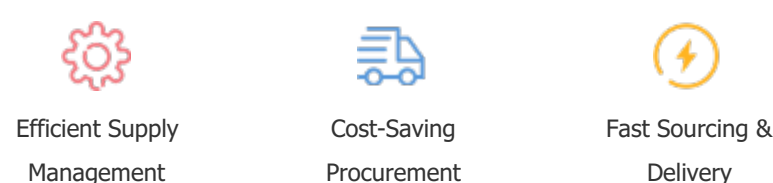
Contact us if you have any questions.

### Payment Support

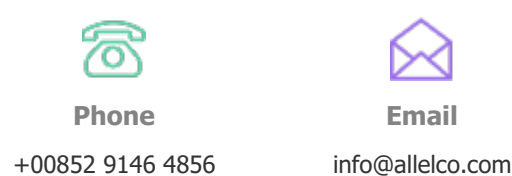
The payment method can be chosen from the methods shown below:  
Wire Transfer (T/T, Bank Transfer), Western Union, Credit card, PayPal.



### Your Faithful Supply Chain Partner -



Contact us if you have any questions.



### Certifications & Memberships



View More

