

Image may be representation.
See specifications for product details.



MAX8521ETP+T

Manufacturer Part Number	MAX8521ETP+T
Manufacturer	Maxim Integrated
Allelco Part Number	32D-MAX8521ETP+T
ECAD Model	Request Free CAD Models
Parts Description	IC DRVR PWR TEC 20-TQFN
Package	20-WQFN Exposed Pad
Data sheet	MAX8520,21.pdf
RoHs Status	ROHS3 Compliant

Get a Quote

MAX8521ETP+T - Analog Devices Inc./Maxim Integrated.New Original in Stock. Download Linear Technology MAX8521ETP+T datasheet/specifications on AllelcoElec.com. Request a quote for MAX8521ETP+T, please send us email: info@allelco.com

Specifications

MAX8521ETP+T Tech Specifications
MAX8521ETP+T - Analog Devices Inc./Maxim Integrated technical specifications, attributes, parameters

Product Attribute	Attribute Value	Product Attribute	Attribute Value
Manufacturer	Maxim Integrated	Operating Temperature	-40°C ~ 85°C
Voltage - Supply	3V ~ 5.5V	Mounting Type	Surface Mount
Supplier Device Package	20-TQFN (5x5)	Current - Supply	-
Series	-	Base Product Number	MAX8521
Package / Case	20-WQFN Exposed Pad	Applications	Thermoelectric Cooler
Package	Tape & Reel (TR)		

Parts with Similar Specifications

The three parts on the right have similar specifications to Analog Devices Inc./Maxim Integrated MAX8521ETP+T

Product Attribute				
Part Number	MAX8521ETP+T	MAX8521EWX+T	MAX8520ETP+T	MAX8521EBX
Manufacturer	Analog Devices Inc./Maxim Integrated	Analog Devices Inc./Maxim Integrated	Analog Devices Inc./Maxim Integrated	Analog Devices Inc./Maxim Integrated
Current - Supply	-	-	-	11mA
Package	Tape & Reel (TR)	Tape & Reel (TR)	Tape & Reel (TR)	Bulk
Applications	Thermoelectric Cooler	Thermoelectric Cooler	Thermoelectric Cooler	Thermoelectric Cooler
Supplier Device Package	20-TQFN (5x5)	36-WLP (3.07x3.07)	20-TQFN (5x5)	36-WLP (3.07x3.07)
Operating Temperature	-40°C ~ 85°C	-40°C ~ 85°C	-40°C ~ 85°C	-40°C ~ 85°C
Base Product Number	MAX8521	MAX8521	MAX8520	-
Mounting Type	Surface Mount	Surface Mount	Surface Mount	Surface Mount
Package / Case	20-WQFN Exposed Pad	36-WFBGA, WLBGA	20-WQFN Exposed Pad	36-WFBGA, WLBGA
Series	-	-	-	-
Voltage - Supply	3V ~ 5.5V	3V ~ 5.5V	3V ~ 5.5V	2.5V ~ 6V

MAX8521ETP+T Datasheet PDF

Download MAX8521ETP+T pdf datasheets and Analog Devices Inc./Maxim Integrated documentation for MAX8521ETP+T - Analog Devices Inc./Maxim Integrated.

Datasheets

[MAX8520,21.pdf](#)

Environmental Information

[Maxim Integrated REACH.pdf](#)

[Maxim Integrated RoHS Cert.pdf](#)

[Red Phosphorous Certificate.pdf](#)

Part Numbering Guide

[Part Numbering System.pdf](#)

Application Notes

[HFAN-08.2.0: How to Control and Compensate a Therm.pdf](#)

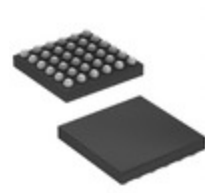
[Stabilizing Thermoelectric Controller \(TEC\) Loops .pdf](#)

Customers Also Interested in

Recommended Products



MAX8520ETP
Analog Devices / Maxim Integrated



MAX8527EUD+
Analog Devices Inc./Maxim Integrated
IC REG LINEAR POS ADJ 2A 14TSSOP



MAX8521EWX+T
Analog Devices Inc./Maxim Integrated
IC DRVR PWR TEC 36-WLP



MAX8526EUD+T
Analog Devices Inc./Maxim Integrated
IC REG LINEAR POS ADJ 2A 14TSSOP

MAX8526EUDIK+T
Analog Devices / Maxim Integrated

MAX8521ETP
Analog Devices / Maxim Integrated



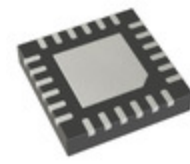
MAX8527EUD+T

Analog Devices Inc./Maxim Integrated
IC REG LINEAR POS ADJ 2A
14TSSOP



MAX8527EUD

Analog Devices / Maxim Integrated



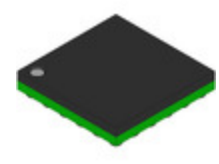
MAX8520ETP+T

Analog Devices Inc./Maxim Integrated
IC DRVR PWR TEC 20-TQFN



MAX8526EUD+

Analog Devices Inc./Maxim Integrated
IC REG LINEAR POS ADJ 2A
14TSSOP



MAX8521EBX

Analog Devices Inc./Maxim Integrated
POWER DRIVERS FOR OPTICAL
MODULE



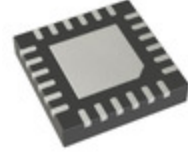
MAX8523EEE+

Analog Devices Inc./Maxim Integrated
IC REG CTRLR BUCK 16QSOP



MAX851ESA

Analog Devices Inc./Maxim Integrated
MAX851 CHARGE-PUMP POWER
SUPPLY



MAX8520ETP+

Analog Devices Inc./Maxim Integrated
IC DRVR PWR TEC 20-TQFN



MAX8518EUB+T

Analog Devices Inc./Maxim Integrated
IC REG LINEAR POS ADJ 1A 10UMAX



MAX851ISA

Analog Devices Inc./Maxim Integrated
IC REG CHARG PUMP AD/-4.1V
8SOIC



MAX8521EBX-T

Analog Devices Inc./Maxim Integrated
POWER DRIVERS FOR OPTICAL
MODULE

Shipment

Delivery Time

In-stock items can be shipped within 24 hours. Some parts will be arranged for delivery within 1-2 days from the date all items arrive at our warehouse. And Allelco ships order once a day at about 17:00, except Sunday. Once the goods are shipped, the estimated delivery time depends on the shipping methods and Delivery destination. The table below shows are the logistic time for some common countries.

Delivery Cost

> Use your express account for shipment if you have one.

> Use our account for the shipment. Refer to the table below for the approximate charges.

(Different time frame / countries / package size has different price.)

Delivery Method

> Global Common Shipment by DHL / UPS / FedEx / TNT / EMS / SF we support.

> Others more shipping ways, please get in touch with your customer manager.

Common Countries Logistic Time Reference		
Region	Country	Logistic Time(Day)
America	United States	5
	Brazil	7
Europe	Germany	5
	United Kingdom	4
	Italy	5
Oceania	Australia	6
	New Zealand	7
Asia	India	6
	Japan	7
Middle East	Israel	6

DHL & FedEx Shipment Charges Reference	
Shipment charges(KG)	Reference DHL(USD\$)
0.00kg-1.00kg	USD\$60.00
1.00kg-2.00kg	USD\$70.00
2.00kg-3.00kg	USD\$80.00

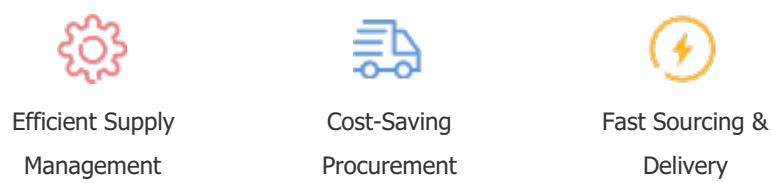
Note: The above table is for reference only. There may have some data bias for the uncontrollable factors.
Contact us if you have any questions.

Payment Support

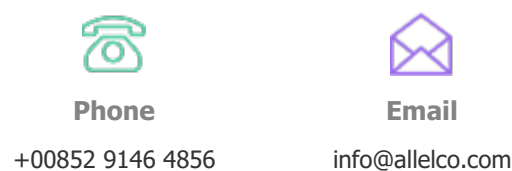
The payment method can be chosen from the methods shown below:
Wire Transfer (T/T, Bank Transfer), Western Union, Credit card,
PayPal.



Your Faithful Supply Chain Partner -



Contact us if you have any questions.



Certifications & Memberships



View More



Contact us

Address: Flat/Rm C 13/F Harvard Commercial Building 105-111 Thomson Road, Wan Chai, Hong Kong

Phone: +00852 9146 4856

Fax: +00852 3010 8510

Email: info@allelco.com

Copyright © 2012-2023 AllelcoElec.com. All rights reserved.