



OP496GSZ

Manufacturer Part Number	OP496GSZ
Manufacturer	Analog Devices, Inc.
Allelco Part Number	32D-OP496GSZ
ECAD Model	 PCB Symbol, Footprint & 3D Mode
Parts Description	IC CMOS 4 CIRCUIT 14SOIC
Package	14-SOIC (0.154", 3.90mm Width)
Data sheet	OP196,296,496.pdf
RoHs Status	 ROHS3 Compliant


[Get a Quote](#)

OP496GSZ - Analog Devices Inc..New Original in Stock. Download Linear Technology OP496GSZ datasheet/specifications on AllelcoElec.com.
 Request a quote for OP496GSZ, please send us email: info@allelco.com





Specifications

OP496GSZ Tech Specifications
 OP496GSZ - Analog Devices Inc. technical specifications, attributes, parameters

Product Attribute	Attribute Value	Product Attribute	Attribute Value
Manufacturer	Analog Devices, Inc.	Operating Temperature	-40°C ~ 125°C
Voltage - Supply Span (Min)	3 V	Number of Circuits	4
Voltage - Supply Span (Max)	12 V	Mounting Type	Surface Mount
Voltage - Input Offset	35 µV	Gain Bandwidth Product	450 kHz
Supplier Device Package	14-SOIC	Current - Supply	-
Slew Rate	0.3V/µs	Current - Output / Channel	4 mA
Series	-	Current - Input Bias	10 nA
Package / Case	14-SOIC (0.154", 3.90mm Width)	Base Product Number	OP496
Package	Tube	Amplifier Type	CMOS
Output Type	Rail-to-Rail		

Parts with Similar Specifications


The three parts on the right have similar specifications to Analog Devices Inc. OP496GSZ

Product Attribute	 NO PICTURE	 AHEAD OF WHAT'S POSSIBLE™	 AHEAD OF WHAT'S POSSIBLE™	
Part Number	OP496GSZ	OP496GSZ-REEL7	OP496GS	OP495GPZ
Manufacturer	Analog Devices Inc.	Analog Devices Inc.	Analog Devices Inc.	Analog Devices Inc.
Series	-	-	-	-
Supplier Device Package	14-SOIC	14-SOIC	14-SOIC	14-PDIP
Package	Tube	Tape & Reel (TR)	Tube	Tube
Voltage - Supply Span (Max)	12 V	12 V	12 V	36 V
Voltage - Supply Span (Min)	3 V	3 V	3 V	3 V
Current - Input Bias	10 nA	10 nA	10 nA	7 nA
Current - Supply	-	-	-	-
Amplifier Type	CMOS	CMOS	CMOS	General Purpose
Output Type	Rail-to-Rail	Rail-to-Rail	Rail-to-Rail	Rail-to-Rail
Gain Bandwidth Product	450 kHz	450 kHz	450 kHz	75 kHz
Current - Output / Channel	4 mA	4 mA	4 mA	25 mA
Operating Temperature	-40°C ~ 125°C	-40°C ~ 125°C	-40°C ~ 125°C	-40°C ~ 125°C
Number of Circuits	4	4	4	4
Base Product Number	OP496	OP496	OP496	OP495
Slew Rate	0.3V/µs	0.3V/µs	0.3V/µs	0.03V/µs
Voltage - Input Offset	35 µV	35 µV	35 µV	300 µV
Mounting Type	Surface Mount	Surface Mount	Surface Mount	Through Hole
Package / Case	14-SOIC (0.154", 3.90mm Width)	14-SOIC (0.154", 3.90mm Width)	14-SOIC (0.154", 3.90mm Width)	14-DIP (0.300", 7.62mm)


OP496GSZ Datasheet PDF

Download OP496GSZ pdf datasheets and Analog Devices Inc. documentation for OP496GSZ - Analog Devices Inc..

Datasheets


[OP196,296,496.pdf](#)

PCN Assembly/Origin


[Alternate Site 25/Mar/2021.pdf](#)

Customers Also Interested in

Recommended Products



OP496GSZ-REEL7
Analog Devices Inc.
IC CMOS 4 CIRCUIT 14SOIC



OP496GS
Analog Devices Inc.
IC CMOS 4 CIRCUIT 14SOIC



OP496HRUZ
ADI (Analog Devices, Inc.)



OP495GPZ
Analog Devices Inc.
IC OPAMP GP 4 CIRCUIT 14DIP



OP496GSZ-REEL
Analog Devices Inc.
IC CMOS 4 CIRCUIT 14SOIC



OP496HRU-REEL
Analog Devices Inc.
IC OPAMP GP R-R 450KHZ 14TSSOP



OP495GSZ-REEL
Analog Devices Inc.
IC OPAMP GP 4 CIRCUIT 16SOIC



OP495GS
Analog Devices Inc.
IC OPAMP GP 4 CIRCUIT 16SOIC



OP495GSZ
Analog Devices Inc.
IC OPAMP GP 4 CIRCUIT 16SOIC



OP495G
ADI (Analog Devices, Inc.)



OP496HRUZ-REEL
Analog Devices Inc.
IC CMOS 4 CIRCUIT 14TSSOP



OP497CY
ADI (Analog Devices, Inc.)



OP495GP
Analog Devices Inc.
IC OPAMP GP R-R 85KHZ QUAD 14DIP



OP497BRC/883
ADI (Analog Devices, Inc.)



OP496G
ADI (Analog Devices, Inc.)



OP497FP
Analog Devices Inc.
IC OPAMP GP 500KHZ QUAD 14DIP



OP496GP
ADI (Analog Devices, Inc.)



OP496GPZ
ADI (Analog Devices, Inc.)

Shipment

Delivery Time

In-stock items can be shipped within 24 hours. Some parts will be arranged for delivery within 1-2 days from the date all items arrive at our warehouse. And Allelco ships order once a day at about 17:00, except Sunday. Once the goods are shipped, the estimated delivery time depends on the shipping methods and Delivery destination. The table below shows are the logistic time for some common countries.

Delivery Cost

- > Use your express account for shipment if you have one.
 - > Use our account for the shipment. Refer to the table below for the approximate charges.
- (Different time frame / countries / package size has different price.)

Delivery Method

- > Global Common Shipment by DHL / UPS / FedEx / TNT / EMS / SF we support.
- > Others more shipping ways, please get in touch with your customer manager.

Common Countries Logistic Time Reference		
Region	Country	Logistic Time(Day)
America	United States	5
	Brazil	7
Europe	Germany	5
	United Kingdom	4
	Italy	5
Oceania	Australia	6
	New Zealand	7
Asia	India	6
	Japan	7
Middle East	Israel	6

DHL & FedEx Shipment Charges Reference	
Shipment charges(KG)	Reference DHL(USD\$)
0.00kg-1.00kg	USD\$60.00
1.00kg-2.00kg	USD\$70.00
2.00kg-3.00kg	USD\$80.00

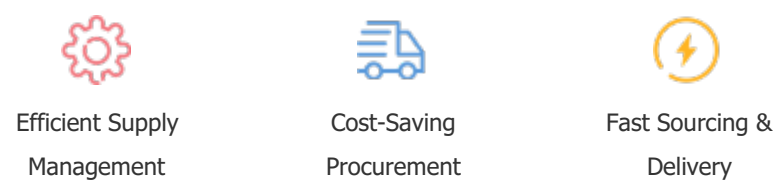
Note: The above table is for reference only. There may have some data bias for the uncontrollable factors.
Contact us if you have any questions.

Payment Support

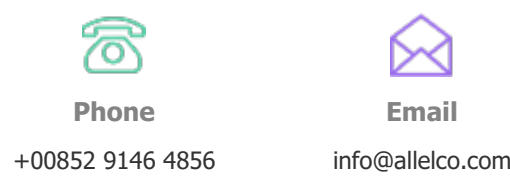
The payment method can be chosen from the methods shown below:
Wire Transfer (T/T, Bank Transfer), Western Union, Credit card,
PayPal.



Your Faithful Supply Chain Partner -



Contact us if you have any questions.



Certifications & Memberships



[View More](#)