

Image may be representation.
See specifications for product details.



EPM7160STC100-10

Manufacturer Part Number	EPM7160STC100-10
Manufacturer	Intel
Allelco Part Number	32D-EPM7160STC100-10
ECAD Model	Request Free CAD Models
Parts Description	IC CPLD 160MC 10NS 100TQFP
Package	100-TQFP
Data sheet	MAX 7000.pdf 100-TQFP Pkg Info.pdf

Get a Quote

EPM7160STC100-10 - Intel.New Original in Stock. Download Linear Technology EPM7160STC100-10 datasheet/specifications on AllelcoElec.com.
Request a quote for EPM7160STC100-10, please send us email: info@allelco.com

Specifications

EPM7160STC100-10 Tech Specifications
EPM7160STC100-10 - Intel technical specifications, attributes, parameters

Product Attribute	Attribute Value	Product Attribute	Attribute Value
Manufacturer	Intel	Number of Macrocells	160
Voltage Supply - Internal	4.75V ~ 5.25V	Number of Logic Elements/Blocks	10
Supplier Device Package	100-TQFP (14x14)	Number of I/O	84
Series	MAX® 7000S	Number of Gates	3200
Programmable Type	In System Programmable	Mounting Type	Surface Mount
Package / Case	100-TQFP	Delay Time tpd(1) Max	10 ns
Package	Tray	Base Product Number	EPM7160
Operating Temperature	0°C ~ 70°C (TA)		

Parts with Similar Specifications

The three parts on the right have similar specifications to Intel EPM7160STC100-10

Product Attribute				
Part Number	EPM7160STC100-10	EPM7160SQC160-10N	EPM7160ST1100-10	EPM7160STC100-7N
Manufacturer	Intel	Intel	Intel	Intel
Number of Gates	3200	3200	3200	3200
Number of Logic Elements/Blocks	10	10	10	10
Package	Tray	Tray	Tray	Tray
Base Product Number	EPM7160	EPM7160	EPM7160	EPM7160
Mounting Type	Surface Mount	Surface Mount	Surface Mount	Surface Mount
Delay Time tpd(1) Max	10 ns	10 ns	10 ns	7.5 ns
Voltage Supply - Internal	4.75V ~ 5.25V	4.75V ~ 5.25V	4.5V ~ 5.5V	4.75V ~ 5.25V
Supplier Device Package	100-TQFP (14x14)	160-PQFP (28x28)	100-TQFP (14x14)	100-TQFP (14x14)
Operating Temperature	0°C ~ 70°C (TA)	0°C ~ 70°C (TA)	-40°C ~ 85°C (TA)	0°C ~ 70°C (TA)
Package / Case	100-TQFP	160-BQFP	100-TQFP	100-TQFP
Programmable Type	In System Programmable	In System Programmable	In System Programmable	In System Programmable
Series	MAX® 7000S	MAX® 7000S	MAX® 7000S	MAX® 7000S
Number of I/O	84	104	84	84
Number of Macrocells	160	160	160	160

EPM7160STC100-10 Datasheet PDF

Download EPM7160STC100-10 pdf datasheets and Intel documentation for EPM7160STC100-10 - Intel.

Datasheets

[100-TQFP Pkg Info.pdf](#)

PCN Packaging

[All Dev Pkg Chg 1/Aug/2018.pdf](#)

[Mult Dev Dessicant Chg 19/Jul/2019.pdf](#)

PCN Obsolescence/ EOL

[EOL 01/Dec/2016.pdf](#)

[EOL 21/Nov/2016.pdf](#)

PCN Other

[Software Disc 06/Nov/2020.pdf](#)

PCN Design/Specification

[Mult Series Software Chgs 26/Mar/2020.pdf](#)

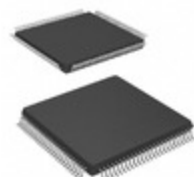
 MAX 7000.pdf

Customers Also Interested in

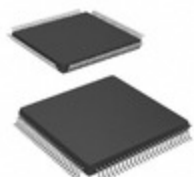
Recommended Products



EPM7160SQC160-10N
Intel
IC CPLD 160MC 10NS 160QFP



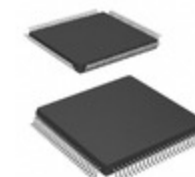
EPM7160STI100-10
Intel
IC CPLD 160MC 10NS 100TQFP



EPM7160STC100-7N
Intel
IC CPLD 160MC 7.5NS 100TQFP



EPM7160SLC84-7N
Altera (Intel)



EPM7160STC100-7
Intel
IC CPLD 160MC 7.5NS 100TQFP



EPM7160SLC84-7
Intel
IC CPLD 160MC 7.5NS 84PLCC



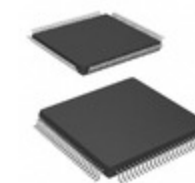
EPM7160SQC160-7
Intel
IC CPLD 160MC 7.5NS 160QFP



EPM7160SLI84-10
Intel
IC CPLD 160MC 10NS 84PLCC



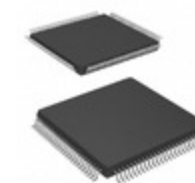
EPM7160SQC160-10
Intel
IC CPLD 160MC 10NS 160QFP



EPM7160STC100-6N
Intel
IC CPLD 160MC 6NS 100TQFP



EPM7160SQC160-6
Intel
IC CPLD 160MC 6NS 160QFP



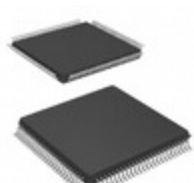
EPM7160STI100-10N
Intel
IC CPLD 160MC 10NS 100TQFP



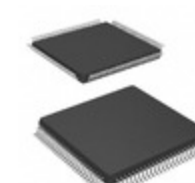
EPM7160SLI84-10N
Altera (Intel)



EPM7160ST100-6
Altera (Intel)



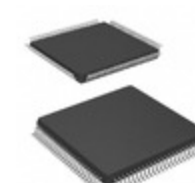
EPM7160STC100-10N
Intel
IC CPLD 160MC 10NS 100TQFP



EPM7160STC100-10F
Intel
IC CPLD 160MC 10NS 100TQFP



EPM7160SQC160-15
Altera (Intel)



EPM7160STC100-6
Intel
IC CPLD 160MC 6NS 100TQFP

Shipment

Delivery Time

In-stock items can be shipped within 24 hours. Some parts will be arranged for delivery within 1-2 days from the date all items arrive at our warehouse. And Allelco ships order once a day at about 17:00, except Sunday. Once the goods are shipped, the estimated delivery time depends on the shipping methods and Delivery destination. The table below shows are the logistic time for some common countries.

Delivery Cost

- > Use your express account for shipment if you have one.
 - > Use our account for the shipment. Refer to the table below for the approximate charges.
- (Different time frame / countries / package size has different price.)

Delivery Method

- > Global Common Shipment by DHL / UPS / FedEx / TNT / EMS / SF we support.
- > Others more shipping ways, please get in touch with your customer manager.

Common Countries Logistic Time Reference		
Region	Country	Logistic Time(Day)
America	United States	5
	Brazil	7
Europe	Germany	5
	United Kingdom	4
	Italy	5
Oceania	Australia	6
	New Zealand	7
Asia	India	6
	Japan	7
Middle East	Israel	6

DHL & FedEx Shipment Charges Reference	
Shipment charges(KG)	Reference DHL(USD\$)
0.00kg-1.00kg	USD\$60.00
1.00kg-2.00kg	USD\$70.00
2.00kg-3.00kg	USD\$80.00

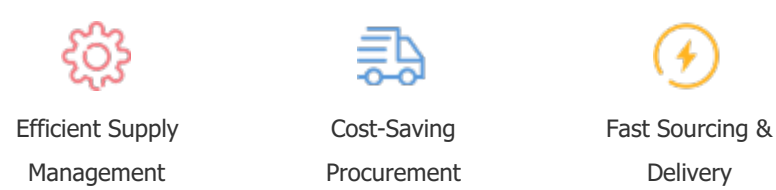
Note: The above table is for reference only. There may have some data bias for the uncontrollable factors.
Contact us if you have any questions.

Payment Support

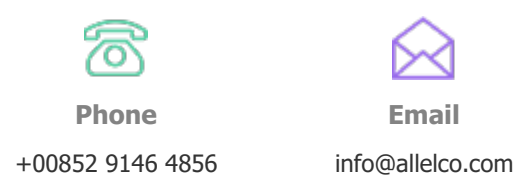
The payment method can be chosen from the methods shown below:
Wire Transfer (T/T, Bank Transfer), Western Union, Credit card, PayPal.



Your Faithful Supply Chain Partner -



Contact us if you have any questions.



Certifications & Memberships



[View More](#)

Contact us

Address: Flat/Rm C 13/F Harvard Commercial Building 105-111 Thomson Road, Wan Chai, Hong Kong
Phone: +00852 9146 4856
Fax: +00852 3010 8510
Email: info@Allelco.com