

Image may be representation.
See specifications for product details.



XCKU3P-1FFVB676E

Manufacturer Part Number	XCKU3P-1FFVB676E
Manufacturer	AMD Xilinx
Allelco Part Number	32D-XCKU3P-1FFVB676E
ECAD Model	Request Free CAD Models
Parts Description	IC FPGA 280 I/O 676FCBGA
Package	676-BBGA, FCBGA
Data sheet	XCKU3P-1FFVB676E.pdf
RoHs Status	ROHS3 Compliant

Get a Quote

XCKU3P-1FFVB676E - AMD.New Original in Stock. Download Linear Technology XCKU3P-1FFVB676E datasheet/specifications on AllelcoElec.com.
Request a quote for XCKU3P-1FFVB676E, please send us email: info@allelco.com

Specifications

XCKU3P-1FFVB676E Tech Specifications
XCKU3P-1FFVB676E - AMD technical specifications, attributes, parameters

Product Attribute	Attribute Value	Product Attribute	Attribute Value
Manufacturer	AMD Xilinx	Operating Temperature	0°C ~ 100°C (TJ)
Voltage - Supply	0.825V ~ 0.876V	Number of Logic Elements/Cells	355950
Total RAM Bits	31641600	Number of LABs/CLBs	20340
Supplier Device Package	676-FCBGA (27x27)	Number of I/O	280
Series	Kintex® UltraScale+™	Mounting Type	Surface Mount
Package / Case	676-BBGA, FCBGA	Base Product Number	XCKU3
Package	Tray		

Parts with Similar Specifications

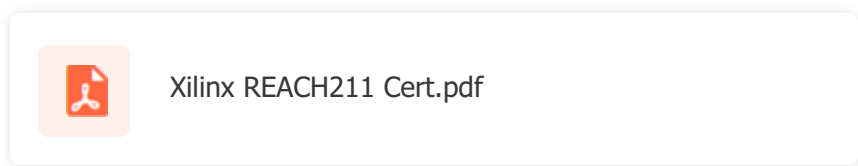
The three parts on the right have similar specifications to AMD XCKU3P-1FFVB676E

Product Attribute				
Part Number	XCKU3P-1FFVB676E	XCKU3P-L1SFVB784I	XCKU3P-2FFVA676I	XCKU3P-L1FFVB676I
Manufacturer	AMD	AMD	AMD	AMD
Base Product Number	XCKU3	XCKU3	XCKU3	XCKU3
Operating Temperature	0°C ~ 100°C (TJ)	-40°C ~ 100°C (TJ)	-40°C ~ 100°C (TJ)	-40°C ~ 100°C (TJ)
Total RAM Bits	31641600	31641600	31641600	31641600
Number of I/O	280	256	256	280
Supplier Device Package	676-FCBGA (27x27)	784-FCBGA (23x23)	676-FCBGA (27x27)	676-FCBGA (27x27)
Package / Case	676-BBGA, FCBGA	784-BFBGA, FCBGA	676-BBGA, FCBGA	676-BBGA, FCBGA
Package	Tray	Tray	Tray	Tray
Number of LABs/CLBs	20340	20340	20340	20340
Voltage - Supply	0.825V ~ 0.876V	0.698V ~ 0.876V	0.825V ~ 0.876V	0.698V ~ 0.876V
Series	Kintex® UltraScale+™	Kintex® UltraScale+™	Kintex® UltraScale+™	Kintex® UltraScale+™
Number of Logic Elements/Cells	355950	355950	355950	355950
Mounting Type	Surface Mount	Surface Mount	Surface Mount	Surface Mount

XCKU3P-1FFVB676E Datasheet PDF

Download XCKU3P-1FFVB676E pdf datasheets and AMD documentation for XCKU3P-1FFVB676E - AMD.

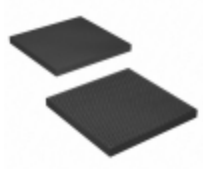
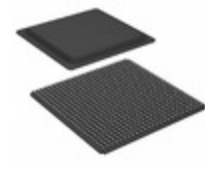
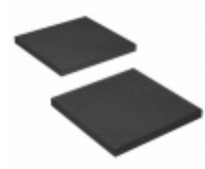
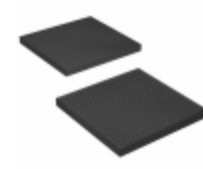
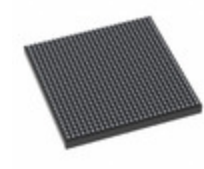
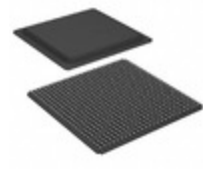
Environmental Information



Customers Also Interested in

Recommended Products

XCKU3P-L1SFVB784I	XCKU3P-2FFVA676I	XCKU3P-L1FFVB676I	XCKU3P-1SFVB784E	XCKU15P-2FFVA1156I	XCKU3P-2SFVB784I
AMD IC FPGA 256 I/O 784FCBGA	AMD IC FPGA 256 I/O 676FCBGA	AMD IC FPGA 280 I/O 676FCBGA	AMD IC FPGA 304 I/O 784FCBGA	AMD IC FPGA 516 I/O 1156FCBGA	AMD IC FPGA 304 I/O 784FCBGA
XCKU15P-1FFVE1517E	XCKU3P-1SFVB784I	XCKU15P-3FFVA1156E	XCKU15P-2FFVA1156E	XCKU3P-1FFVB676I	XCKU15P-2FFVE1517E
AMD IC FPGA 512 I/O 1517FCBGA	AMD IC FPGA 256 I/O 784FCBGA	AMD IC FPGA 516 I/O 1156FCBGA	AMD IC FPGA 516 I/O 1156FCBGA	AMD IC FPGA 280 I/O 676FCBGA	AMD IC FPGA 512 I/O 1517FCBGA

**XCKU15P-2FFVE1517I**AMD
IC FPGA 512 I/O 1517FCBGA**XCKU3P-2FFVB676E**AMD
IC FPGA 280 I/O 676FCBGA**XCKU15P-3FFVE1517E**AMD
IC FPGA 512 I/O 1517FCBGA**XCKU15P-1FFVE1517I**AMD
IC FPGA 512 I/O 1517FCBGA**XCKU3P-3SFVB784E**AMD
IC FPGA 304 I/O 784FCBGA**XCKU3P-2FFVB676I**AMD
IC FPGA 280 I/O 676FCBGA

Shipment

Delivery Time

In-stock items can be shipped within 24 hours. Some parts will be arranged for delivery within 1-2 days from the date all items arrive at our warehouse. And Allelco ships order once a day at about 17:00, except Sunday. Once the goods are shipped, the estimated delivery time depends on the shipping methods and Delivery destination. The table below shows are the logistic time for some common countries.

Delivery Cost

> Use your express account for shipment if you have one.

> Use our account for the shipment. Refer to the table below for the approximate charges.

(Different time frame / countries / package size has different price.)

Delivery Method

> Global Common Shipment by DHL / UPS / FedEx / TNT / EMS / SF we support.

> Others more shipping ways, please get in touch with your customer manager.

Common Countries Logistic Time Reference

Region	Country	Logistic Time(Day)
America	United States	5
	Brazil	7
Europe	Germany	5
	United Kingdom	4
	Italy	5
Oceania	Australia	6
	New Zealand	7
Asia	India	6
	Japan	7
Middle East	Israel	6

DHL & FedEx Shipment Charges Reference

Shipment charges(KG)	Reference DHL(USD\$)
0.00kg-1.00kg	USD\$60.00
1.00kg-2.00kg	USD\$70.00
2.00kg-3.00kg	USD\$80.00

Note: The above table is for reference only. There may have some data bias for the uncontrollable factors.
Contact us if you have any questions.

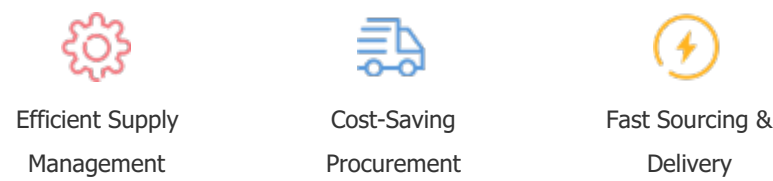
Payment Support

The payment method can be chosen from the methods shown below:

Wire Transfer (T/T, Bank Transfer), Western Union, Credit card, PayPal.



Your Faithful Supply Chain Partner -



Contact us if you have any questions.



Certifications & Memberships



[View More](#)



Contact us

Address: Flat/Rm C 13/F Harvard Commercial Building 105-111 Thomson Road, Wan Chai, Hong Kong

Phone: +00852 9146 4856

Fax: +00852 3010 8510

Email: info@Allelco.com

Copyright © 2012-2023 AllelcoElec.com. All rights reserved.