



SPD15P10PG

Manufacturer Part Number	SPD15P10PG
Manufacturer	Infineon Technologies
Allelco Part Number	32D-SPD15P10PG
ECAD Model	Request Free CAD Models
Parts Description	SPD15P10 - 20V-250V P-CHANNEL PO
Package	TO-252-3, DPak (2 Leads + Tab), SC-63
Data sheet	SPD15P10PG.pdf



Get a Quote

SPD15P10PG - Infineon Technologies. New Original in Stock. Download Linear Technology SPD15P10PG datasheet/specifications on AllelcoElec.com.
Request a quote for SPD15P10PG, please send us email: info@allelco.com

Specifications

SPD15P10PG Tech Specifications
SPD15P10PG - Infineon Technologies technical specifications, attributes, parameters

Product Attribute	Attribute Value	Product Attribute	Attribute Value
Manufacturer	Infineon Technologies	Operating Temperature	-55°C ~ 175°C (TJ)
Vgs(th) (Max) @ Id	2.1V @ 1.54mA	Mounting Type	Surface Mount
Vgs (Max)	±20V	Input Capacitance (Ciss) (Max) @ Vds	1280 pF @ 25 V
Technology	MOSFET (Metal Oxide)	Gate Charge (Qg) (Max) @ Vgs	48 nC @ 10 V
Supplier Device Package	PG-TO252-3-11	FET Type	P-Channel
Series	SIPMOS®	FET Feature	-
Rds On (Max) @ Id, Vgs	240mOhm @ 10.6A, 10V	Drive Voltage (Max Rds On, Min Rds On)	10V
Power Dissipation (Max)	128W (Tc)	Drain to Source Voltage (Vdss)	100 V
Package / Case	TO-252-3, DPak (2 Leads + Tab), SC-63	Current - Continuous Drain (Id) @ 25°C	15A (Tc)
Package	Bulk		

Parts with Similar Specifications

The three parts on the right have similar specifications to Infineon Technologies SPD15P10PG

Product Attribute				
Part Number	SPD15P10PG	SPD15N06S2L-64	SPD15P10PGBTMA1	SPD14N06S2-80
Manufacturer	Infineon Technologies	Infineon Technologies	Infineon Technologies	Infineon Technologies
FET Feature	-	-	-	-
Supplier Device Package	PG-TO252-3-11	PG-TO252-3-11	PG-TO252-3	PG-TO252-3-11
Operating Temperature	-55°C ~ 175°C (TJ)	-55°C ~ 175°C (TJ)	-55°C ~ 175°C (TJ)	-55°C ~ 175°C (TJ)
Input Capacitance (Ciss) (Max) @ Vds	1280 pF @ 25 V	445 pF @ 25 V	1280 pF @ 25 V	400 pF @ 25 V
Rds On (Max) @ Id, Vgs	240mOhm @ 10.6A, 10V	64mOhm @ 8A, 10V	240mOhm @ 10.6A, 10V	80mOhm @ 7A, 10V
Drive Voltage (Max Rds On, Min Rds On)	10V	4.5V, 10V	10V	10V
Current - Continuous Drain (Id) @ 25°C	15A (Tc)	19A (Tc)	15A (Tc)	17A (Tc)
Drain to Source Voltage (Vdss)	100 V	55 V	100 V	55 V
Gate Charge (Qg) (Max) @ Vgs	48 nC @ 10 V	13 nC @ 10 V	48 nC @ 10 V	10 nC @ 10 V
Package	Bulk	Tape & Reel (TR)	Tape & Reel (TR)	Tape & Reel (TR)
Vgs (Max)	±20V	±20V	±20V	±20V
FET Type	P-Channel	N-Channel	P-Channel	N-Channel
Technology	MOSFET (Metal Oxide)	MOSFET (Metal Oxide)	MOSFET (Metal Oxide)	MOSFET (Metal Oxide)
Mounting Type	Surface Mount	Surface Mount	Surface Mount	Surface Mount
Series	SIPMOS®	OptiMOS™	Automotive, AEC-Q101, SIPMOS®	OptiMOS™
Power Dissipation (Max)	128W (Tc)	47W (Tc)	128W (Tc)	30W (Tc)
Vgs(th) (Max) @ Id	2.1V @ 1.54mA	2V @ 14µA	2.1V @ 1.54mA	4V @ 14µA
Package / Case	TO-252-3, DPak (2 Leads + Tab), SC-63	TO-252-3, DPak (2 Leads + Tab), SC-63	TO-252-3, DPak (2 Leads + Tab), SC-63	TO-252-3, DPak (2 Leads + Tab), SC-63

Customers Also Interested in

Recommended Products



SPD18P06

Cypress Semiconductor
(Infineon Technologies)



SPD15N06S2L-64

Infineon Technologies
MOSFET N-CH 55V 19A TO252-3



NO PICTURE

SPD1612QN2R

SOLOMON



SPD13N05L

Cypress Semiconductor
(Infineon Technologies)



SPD15P10PGBTMA1

Infineon Technologies
MOSFET P-CH 100V 15A TO252-3



NO PICTURE

SPD16N05

INT



NO PICTURE



SPD127R-333M API Delevan Inc. FIXED IND 33UH 3A 65 MOHM SMD	SPD14N05 Siemens	SPD15N06S2L-64 MOS Cypress Semiconductor (Infineon Technologies)	SPD15N06S2L Cypress Semiconductor (Infineon Technologies)	SPD121T onsemi Rectifier Diode, Schottky, 0.05A	SPD14N06S2-80 MOS Cypress Semiconductor (Infineon Technologies)
					
SPD15N06S2L-64 2N06L64 Cypress Semiconductor (Infineon Technologies)	SPD15P10PLG MOS Cypress Semiconductor (Infineon Technologies)	SPD14N06S2-80 Infineon Technologies MOSFET N-CH 55V 17A TO252-3	SPD15P10PLGBTMA1 Infineon Technologies MOSFET P-CH 100V 15A TO252-3	SPD15P10PLG Cypress Semiconductor (Infineon Technologies)	SPD15P10PG MOS Cypress Semiconductor (Infineon Technologies)

Shipment

Delivery Time

In-stock items can be shipped within 24 hours. Some parts will be arranged for delivery within 1-2 days from the date all items arrive at our warehouse. And Allelco ships order once a day at about 17:00, except Sunday. Once the goods are shipped, the estimated delivery time depends on the shipping methods and Delivery destination. The table below shows are the logistic time for some common countries.

Delivery Cost

> Use your express account for shipment if you have one.

> Use our account for the shipment. Refer to the table below for the approximate charges.

(Different time frame / countries / package size has different price.)

Delivery Method

> Global Common Shipment by DHL / UPS / FedEx / TNT / EMS / SF we support.

> Others more shipping ways, please get in touch with your customer manager.

Common Countries Logistic Time Reference		
Region	Country	Logistic Time(Day)
America	United States	5
	Brazil	7
Europe	Germany	5
	United Kingdom	4
	Italy	5
Oceania	Australia	6
	New Zealand	7
Asia	India	6
	Japan	7
Middle East	Israel	6

DHL & FedEx Shipment Charges Reference	
Shipment charges(KG)	Reference DHL(USD\$)
0.00kg-1.00kg	USD\$60.00
1.00kg-2.00kg	USD\$70.00
2.00kg-3.00kg	USD\$80.00

Note: The above table is for reference only. There may have some data bias for the uncontrollable factors.

Contact us if you have any questions.

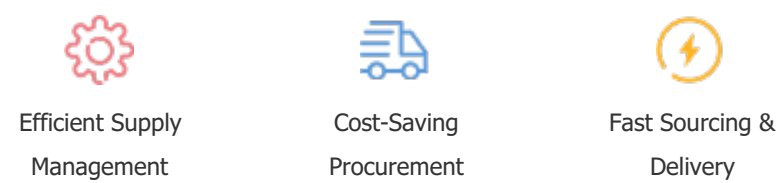
Payment Support

The payment method can be chosen from the methods shown below:

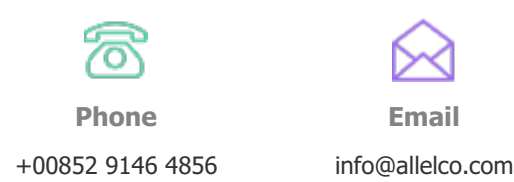
Wire Transfer (T/T, Bank Transfer), Western Union, Credit card, PayPal.



Your Faithful Supply Chain Partner -



Contact us if you have any questions.



Certifications & Memberships



[View More](#)