

Image may be representation.
See specifications for product details.



MAX3085EESA

| | |
|--------------------------|-------------------------------|
| Manufacturer Part Number | MAX3085EESA |
| Manufacturer | Maxim Integrated |
| Allelco Part Number | 32D-MAX3085EESA |
| ECAD Model | Request Free CAD Models |
| Parts Description | RS-485/RS-422 TRANSCVR |
| Package | 8-SOIC (0.154", 3.90mm Width) |
| Data sheet | MAX3085EESA.pdf |

Get a Quote

MAX3085EESA - Analog Devices Inc./Maxim Integrated. New Original in Stock. Download Linear Technology MAX3085EESA datasheet/specifications on AllelcoElec.com. Request a quote for MAX3085EESA, please send us email: info@allelco.com

Specifications

MAX3085EESA Tech Specifications
MAX3085EESA - Analog Devices Inc./Maxim Integrated technical specifications, attributes, parameters

| Product Attribute | Attribute Value | Product Attribute | Attribute Value |
|-------------------------|------------------|-----------------------------|-------------------------------|
| Manufacturer | Maxim Integrated | Package / Case | 8-SOIC (0.154", 3.90mm Width) |
| Voltage - Supply | 4.75V ~ 5.25V | Package | Bulk |
| Type | Transceiver | Operating Temperature | -40°C ~ 85°C (TA) |
| Supplier Device Package | 8-SOIC | Number of Drivers/Receivers | 1/1 |
| Series | - | Mounting Type | Surface Mount |
| Receiver Hysteresis | 25 mV | Duplex | Half |
| Protocol | RS422, RS485 | Data Rate | 500kbps |

Parts with Similar Specifications

The three parts on the right have similar specifications to Analog Devices Inc./Maxim Integrated MAX3085EESA

| Product Attribute | | | | |
|-----------------------------|--------------------------------------|--------------------------------------|--------------------------------------|--------------------------------------|
| Part Number | MAX3085EESA | MAX3085ECPA+ | MAX3085EPA+ | MAX3085EESA+T |
| Manufacturer | Analog Devices Inc./Maxim Integrated | Analog Devices Inc./Maxim Integrated | Analog Devices Inc./Maxim Integrated | Analog Devices Inc./Maxim Integrated |
| Data Rate | 500kbps | 500kbps | 500kbps | 500kbps |
| Receiver Hysteresis | 25 mV | 100 mV | 100 mV | 100 mV |
| Operating Temperature | -40°C ~ 85°C (TA) | 0°C ~ 70°C | -40°C ~ 85°C | -40°C ~ 85°C |
| Type | Transceiver | Transceiver | Transceiver | Transceiver |
| Voltage - Supply | 4.75V ~ 5.25V | 4.75V ~ 5.25V | 4.75V ~ 5.25V | 4.75V ~ 5.25V |
| Series | - | - | - | - |
| Package / Case | 8-SOIC (0.154", 3.90mm Width) | 8-DIP (0.300", 7.62mm) | 8-DIP (0.300", 7.62mm) | 8-SOIC (0.154", 3.90mm Width) |
| Duplex | Half | Half | Half | Half |
| Mounting Type | Surface Mount | Through Hole | Through Hole | Surface Mount |
| Protocol | RS422, RS485 | RS422, RS485 | RS422, RS485 | RS422, RS485 |
| Package | Bulk | Tube | Tube | Tape & Reel (TR) |
| Supplier Device Package | 8-SOIC | 8-PDIP | 8-PDIP | 8-SOIC |
| Number of Drivers/Receivers | 1/1 | 1/1 | 1/1 | 1/1 |

Customers Also Interested in

Recommended Products

| | | | | | |
|--|--|---|---|--|--|
| | | | | | |
| MAX3085ECPA+ Analog Devices Inc./Maxim Integrated IC TRANSCEIVER HALF 1/1 8DIP | MAX3085EPA+ Analog Devices Inc./Maxim Integrated IC TRANSCEIVER HALF 1/1 8DIP | MAX3085ECPA MAX/HECHDZ | MAX3085EESA+T Analog Devices Inc./Maxim Integrated IC TRANSCEIVER HALF 1/1 8SO | MAX3085EPA Analog Devices Inc./Maxim Integrated IC TRANSCEIVER HALF 1/1 8DIP | MAX3085ESA Analog Devices / Maxim Integrated |
| | | | | | |
| MAX3085ECPA+ Analog Devices Inc./Maxim Integrated IC TRANSCEIVER HALF 1/1 8DIP | MAX3085CPA+ Analog Devices Inc./Maxim Integrated IC TRANSCEIVER HALF 1/1 8DIP | MAX3085ESA+ Analog Devices Inc./Maxim Integrated IC TRANSCEIVER HALF 1/1 8SOIC | MAX3085ECSA Analog Devices Inc./Maxim Integrated RS-485/RS-422 TRANSCVR | MAX3085CSA+T Analog Devices Inc./Maxim Integrated IC TRANSCEIVER HALF 1/1 8SOIC | MAX3085EESAR UNION |
| | | | | | |
| MAX3085ESA+T Analog Devices Inc./Maxim Integrated IC TRANSCEIVER HALF 1/1 8SOIC | MAX3085ECPA Analog Devices Inc./Maxim Integrated IC TRANSCEIVER HALF 1/1 8DIP | MAX3085ECSA+T Analog Devices Inc./Maxim Integrated IC TRANSCEIVER HALF 1/1 8SO | MAX3085CSA+ Analog Devices Inc./Maxim Integrated IC TRANSCEIVER HALF 1/1 8SOIC | MAX3085EESA+ Analog Devices Inc./Maxim Integrated IC TRANSCEIVER HALF 1/1 8SOIC | MAX3085CSA Analog Devices Inc./Maxim Integrated IC TRANSCEIVER HALF 1/1 8SOIC |

Shipment

Delivery Time

In-stock items can be shipped within 24 hours. Some parts will be arranged for delivery within 1-2 days from the date all items arrive at our warehouse. And Allelco ships order once a day at about 17:00, except Sunday. Once the goods are shipped, the estimated delivery time depends on the shipping methods and Delivery destination. The table below shows are the logistic time for some common countries.

Delivery Cost

> Use your express account for shipment if you have one.

> Use our account for the shipment. Refer to the table below for the approximate charges.

(Different time frame / countries / package size has different price.)

Delivery Method

> Global Common Shipment by DHL / UPS / FedEx / TNT / EMS / SF we support.

> Others more shipping ways, please get in touch with your customer manager.

| Common Countries Logistic Time Reference | | |
|--|----------------|--------------------|
| Region | Country | Logistic Time(Day) |
| America | United States | 5 |
| | Brazil | 7 |
| Europe | Germany | 5 |
| | United Kingdom | 4 |
| | Italy | 5 |
| Oceania | Australia | 6 |
| | New Zealand | 7 |
| Asia | India | 6 |
| | Japan | 7 |
| Middle East | Israel | 6 |

| DHL & FedEx Shipment Charges Reference | |
|--|----------------------|
| Shipment charges(KG) | Reference DHL(USD\$) |
| 0.00kg-1.00kg | USD\$60.00 |
| 1.00kg-2.00kg | USD\$70.00 |
| 2.00kg-3.00kg | USD\$80.00 |

Note: The above table is for reference only. There may have some data bias for the uncontrollable factors.

Contact us if you have any questions.

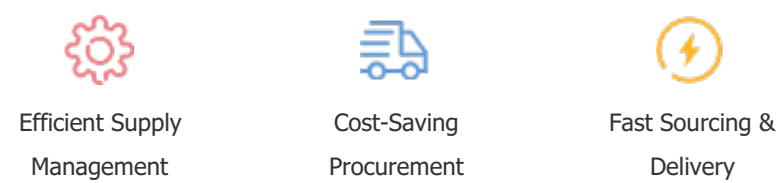
Payment Support

The payment method can be chosen from the methods shown below:

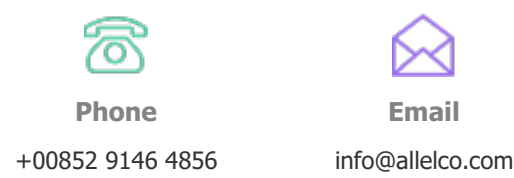
Wire Transfer (T/T, Bank Transfer), Western Union, Credit card, PayPal.



Your Faithful Supply Chain Partner -



Contact us if you have any questions.



+00852 9146 4856

info@allelco.com

Certifications & Memberships



[View More](#)



Contact us

Address: Flat/Rm C 13/F Harvard Commercial Building 105-111 Thomson Road, Wan Chai, Hong Kong

Phone: +00852 9146 4856

Fax: +00852 3010 8510

Email: info@Allelco.com

Copyright © 2012-2023 AllelcoElec.com. All rights reserved.