



R5011415XXWA

Manufacturer Part Number	R5011415XXWA
Manufacturer	Powerex, Inc.
Allelco Part Number	32D-R5011415XXWA
ECAD Model	Request Free CAD Models
Parts Description	DIODE GP REV 1.4KV 150A DO205AA
Package	DO-205AA, DO-8, Stud
Data sheet	R500-01.pdf
RoHS Status	RoHS Compliant



[Get a Quote](#)

R5011415XXWA - Powerex Inc..New Original in Stock. Download Linear Technology R5011415XXWA datasheet/specifications on AllelcoElec.com.

Request a quote for R5011415XXWA, please send us email: info@allelco.com

Specifications

R5011415XXWA Tech Specifications

R5011415XXWA - Powerex Inc. technical specifications, attributes, parameters

Product Attribute	Attribute Value	Product Attribute	Attribute Value
Manufacturer	Powerex, Inc.	Package / Case	DO-205AA, DO-8, Stud
Voltage - Forward (Vf) (Max) @ If	1.4 V @ 470 A	Package	Bulk
Voltage - DC Reverse (Vr) (Max)	1400 V	Operating Temperature - Junction	-65°C ~ 200°C
Technology	Standard, Reverse Polarity	Mounting Type	Chassis, Stud Mount
Supplier Device Package	DO-205AA (DO-8)	Current - Reverse Leakage @ Vr	30 mA @ 1400 V
Speed	Standard Recovery >500ns, > 200mA (Io)	Current - Average Rectified (Io)	150A
Series	-	Capacitance @ Vr, F	-
Reverse Recovery Time (trr)	7 µs	Base Product Number	R5011415

Parts with Similar Specifications

The three parts on the right have similar specifications to Powerex Inc. R5011415XXWA

Product Attribute				
Part Number	R5011415XXWA	R5020818FSWA	R5010615XXWA	R5010815XXWA
Manufacturer	Powerex Inc.	Powerex Inc.	Powerex Inc.	Powerex Inc.
Current - Average Rectified (Io)	150A	175A	150A	150A
Supplier Device Package	DO-205AA (DO-8)	DO-205AA (DO-8)	DO-205AA (DO-8)	DO-205AA (DO-8)
Package	Bulk	Bulk	Bulk	Bulk
Voltage - Forward (Vf) (Max) @ If	1.4 V @ 470 A	1.65 V @ 470 A	-	-
Base Product Number	R5011415	R5020818	R5010615	R5010815
Series	-	-	-	-
Voltage - DC Reverse (Vr) (Max)	1400 V	800 V	600 V	800 V
Capacitance @ Vr, F	-	-	-	-
Package / Case	DO-205AA, DO-8, Stud	DO-205AA, DO-8, Stud	DO-205AA, DO-8, Stud	DO-205AA, DO-8, Stud
Mounting Type	Chassis, Stud Mount	Chassis, Stud Mount	Stud Mount	Stud Mount
Reverse Recovery Time (trr)	7 µs	1.5 µs	7 µs	7 µs
Technology	Standard, Reverse Polarity	Standard	Standard, Reverse Polarity	Standard, Reverse Polarity
Current - Reverse Leakage @ Vr	30 mA @ 1400 V	45 mA @ 800 V	30 mA @ 600 V	30 mA @ 800 V
Speed	Standard Recovery >500ns, > 200mA (Io)	Standard Recovery >500ns, > 200mA (Io)	Standard Recovery >500ns, > 200mA (Io)	Standard Recovery >500ns, > 200mA (Io)
Operating Temperature - Junction	-65°C ~ 200°C	-40°C ~ 150°C	-65°C ~ 200°C	-65°C ~ 200°C

R5011415XXWA Datasheet PDF

Download R5011415XXWA pdf datasheets and Powerex Inc. documentation for R5011415XXWA - Powerex Inc..

Datasheets

R500-01.pdf

Customers Also Interested in

Recommended Products



R5020818FSWA
Powerex Inc.
DIODE GEN PURP 800V 175A DO205AA

R5010615XXWA
Powerex Inc.
DIODE GP REV 600V 150A DO205AA







R5013ANX FU6
LAPIS Technology

R500CH28
WESTCODE
IGBT Module

R5010815XXWA
Powerex Inc.
DIODE GP REV 800V 150A DO205AA

R5011010XXWA
Powerex Inc.
DIODE GP REV 1KV 100A DO205AA



R5011410XXWA Powerex Inc. DIODE GP REV 1.4KV 100A DO205AA	R5016ANX Rohm Semiconductor MOSFET N-CH 500V 16A TO220FM	R5010810XXWA Powerex Inc. DIODE GP REV 800V 100A DO205AA	R5020218FSWA Powerex Inc. DIODE GEN PURP 200V 175A DO205AA	R5016ANJ LAPIS Technology	R5010610XXWA Powerex Inc. DIODE GP REV 600V 100A DO205AA
					
R5011FNX Rohm Semiconductor MOSFET N-CH 500V 11A TO-220FM	R500DH28 WESTCODE IGBT Module	R500DH20 WESTCODE IGBT Module	R5020418FSWA Powerex Inc. DIODE GEN PURP 400V 175A DO205AA	R5021018FSWA Powerex Inc. DIODE GEN PURP 1KV 175A DO205AA	R5011ANX Rohm Semiconductor MOSFET N-CH 500V 11A TO220FM

Shipment

Delivery Time

In-stock items can be shipped within 24 hours. Some parts will be arranged for delivery within 1-2 days from the date all items arrive at our warehouse. And Allelco ships order once a day at about 17:00, except Sunday. Once the goods are shipped, the estimated delivery time depends on the shipping methods and Delivery destination. The table below shows are the logistic time for some common countries.

Delivery Cost

> Use your express account for shipment if you have one.

> Use our account for the shipment. Refer to the table below for the approximate charges.

(Different time frame / countries / package size has different price.)

Delivery Method

> Global Common Shipment by DHL / UPS / FedEx / TNT / EMS / SF we support.

> Others more shipping ways, please get in touch with your customer manager.

Common Countries Logistic Time Reference		
Region	Country	Logistic Time(Day)
America	United States	5
	Brazil	7
Europe	Germany	5
	United Kingdom	4
	Italy	5
Oceania	Australia	6
	New Zealand	7
Asia	India	6
	Japan	7
Middle East	Israel	6

DHL & FedEx Shipment Charges Reference	
Shipment charges(KG)	Reference DHL(USD\$)
0.00kg-1.00kg	USD\$60.00
1.00kg-2.00kg	USD\$70.00
2.00kg-3.00kg	USD\$80.00

Note: The above table is for reference only. There may have some data bias for the uncontrollable factors.

Contact us if you have any questions.

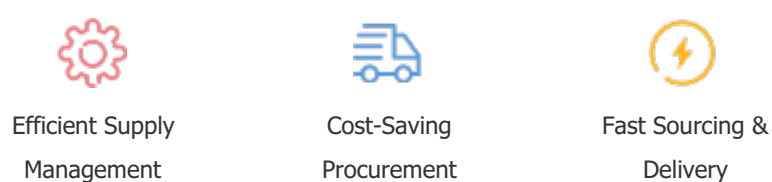
Payment Support

The payment method can be chosen from the methods shown below:

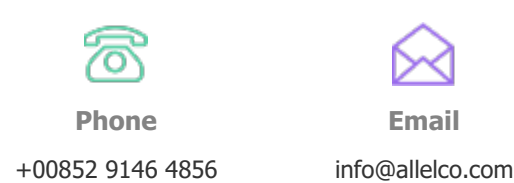
Wire Transfer (T/T, Bank Transfer), Western Union, Credit card, PayPal.



Your Faithful Supply Chain Partner -



Contact us if you have any questions.



Certifications & Memberships



[View More](#)