

Image may be representation.
See specifications for product details.



SI3483DDV-T1-GE3

Manufacturer Part Number	SI3483DDV-T1-GE3
Manufacturer	Vishay / Siliconix
Allelco Part Number	32D-SI3483DDV-T1-GE3
ECAD Model	PCB Symbol, Footprint & 3D Model
Parts Description	MOSFET P-CH 30V 6.4A/8A 6TSOP
Package	SOT-23-6 Thin, TSOT-23-6
Data sheet	SI3483DDV.pdf
RoHs Status	ROHS3 Compliant

Get a Quote

SI3483DDV-T1-GE3 - Vishay Siliconix. New Original in Stock. Download Linear Technology SI3483DDV-T1-GE3 datasheet/specifications on AllelcoElec.com. Request a quote for SI3483DDV-T1-GE3, please send us email: info@allelco.com

Specifications

SI3483DDV-T1-GE3 Tech Specifications
SI3483DDV-T1-GE3 - Vishay Siliconix technical specifications, attributes, parameters

Product Attribute	Attribute Value	Product Attribute	Attribute Value
Manufacturer	Vishay / Siliconix	Operating Temperature	-55°C ~ 150°C (TJ)
Vgs(th) (Max) @ Id	2.2V @ 250µA	Mounting Type	Surface Mount
Vgs (Max)	+16V, -20V	Input Capacitance (Ciss) (Max) @ Vds	580 pF @ 15 V
Technology	MOSFET (Metal Oxide)	Gate Charge (Qg) (Max) @ Vgs	14.5 nC @ 10 V
Supplier Device Package	6-TSOP	FET Type	P-Channel
Series	TrenchFET® Gen IV	FET Feature	-
Rds On (Max) @ Id, Vgs	31.2mOhm @ 5A, 10V	Drive Voltage (Max Rds On, Min Rds On)	4.5V, 10V
Power Dissipation (Max)	2W (Ta), 3W (Tc)	Drain to Source Voltage (Vdss)	30 V
Package / Case	SOT-23-6 Thin, TSOT-23-6	Current - Continuous Drain (Id) @ 25°C	6.4A (Ta), 8A (Tc)
Package	Tape & Reel (TR)	Base Product Number	SI3483

Parts with Similar Specifications

The three parts on the right have similar specifications to Vishay Siliconix SI3483DDV-T1-GE3

Product Attribute				
Part Number	SI3483DDV-T1-GE3	SI3481DV-T1-E3	SI3493BDV-T1-GE3	SI3483DV-T1-GE3
Manufacturer	Vishay Siliconix	Vishay Siliconix	Vishay Siliconix	Vishay Siliconix
Drain to Source Voltage (Vdss)	30 V	30 V	20 V	30 V
Power Dissipation (Max)	2W (Ta), 3W (Tc)	1.14W (Ta)	2.08W (Ta), 2.97W (Tc)	1.14W (Ta)
Package	Tape & Reel (TR)	Tape & Reel (TR)	Tape & Reel (TR)	Tape & Reel (TR)
Input Capacitance (Ciss) (Max) @ Vds	580 pF @ 15 V	-	1805 pF @ 10 V	-
Operating Temperature	-55°C ~ 150°C (TJ)	-55°C ~ 150°C (TJ)	-55°C ~ 150°C (TJ)	-55°C ~ 150°C (TJ)
Drive Voltage (Max Rds On, Min Rds On)	4.5V, 10V	4.5V, 10V	1.8V, 4.5V	4.5V, 10V
Gate Charge (Qg) (Max) @ Vgs	14.5 nC @ 10 V	25 nC @ 10 V	43.5 nC @ 5 V	35 nC @ 10 V
Base Product Number	SI3483	SI3481	SI3493	SI3483
FET Type	P-Channel	P-Channel	P-Channel	P-Channel
Current - Continuous Drain (Id) @ 25°C	6.4A (Ta), 8A (Tc)	4A (Ta)	8A (Tc)	4.7A (Ta)
Rds On (Max) @ Id, Vgs	31.2mOhm @ 5A, 10V	48mOhm @ 5.3A, 10V	27.5mOhm @ 7A, 4.5V	35mOhm @ 6.2A, 10V
Supplier Device Package	6-TSOP	6-TSOP	6-TSOP	6-TSOP
Package / Case	SOT-23-6 Thin, TSOT-23-6	SOT-23-6 Thin, TSOT-23-6	SOT-23-6 Thin, TSOT-23-6	SOT-23-6 Thin, TSOT-23-6
Mounting Type	Surface Mount	Surface Mount	Surface Mount	Surface Mount
Series	TrenchFET® Gen IV	TrenchFET®	TrenchFET®	TrenchFET®
Technology	MOSFET (Metal Oxide)	MOSFET (Metal Oxide)	MOSFET (Metal Oxide)	MOSFET (Metal Oxide)
Vgs(th) (Max) @ Id	2.2V @ 250µA	3V @ 250µA	900mV @ 250µA	3V @ 250µA
FET Feature	-	-	-	-
Vgs (Max)	+16V, -20V	±20V	±8V	±20V

SI3483DDV-T1-GE3 Datasheet PDF

Download SI3483DDV-T1-GE3 pdf datasheets and Vishay Siliconix documentation for SI3483DDV-T1-GE3 - Vishay Siliconix.

Datasheets

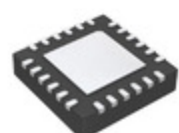
SI3483DDV.pdf

PCN Assembly/Origin

New Solder Plating Site 18/Apr/2023.pdf

Customers Also Interested in

Recommended Products



SI3482-A01-GMR

Skyworks Solutions Inc.
IC POE CNTRL 24-48 PORT 24QFN



SI3481DV-T1-E3

Vishay Siliconix
MOSFET P-CH 30V 4A 6TSOP



SI3493BDV-T1-GE3

Vishay Siliconix
MOSFET P-CH 20V 8A 6TSOP



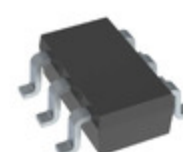
SI3483DV-T1-GE3

Vishay Siliconix
MOSFET P-CH 30V 4.7A 6TSOP



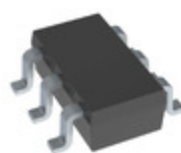
SI3493BDV-T1-GE3 MOS

Electro-Films (EFI) / Vishay



SI3481DV-T1-GE3

Vishay Siliconix
MOSFET P-CH 30V 4A 6TSOP



SI3483CDV-T1-E3

Vishay Siliconix
MOSFET P-CH 30V 8A 6TSOP



SI3483CDV-T1-GE3 MOS

Electro-Films (EFI) / Vishay



SI3493BDV-T1-E3-S

Electro-Films (EFI) / Vishay



SI3483CDV-T1-GE3

Vishay Siliconix
MOSFET P-CH 30V 8A 6TSOP



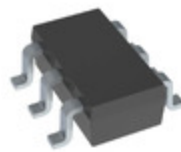
SI3493BDV-T1-E3 MOS

Electro-Films (EFI) / Vishay



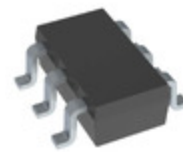
SI3477DV-T1-E3

Electro-Films (EFI) / Vishay



SI3477DV-T1-GE3

Vishay Siliconix
MOSFET P-CH 12V 8A 6TSOP



SI3493BDV-T1-E3

Vishay Siliconix
MOSFET P-CH 20V 8A 6TSOP



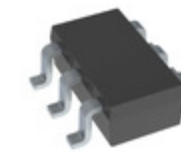
SI3475DV-T1-GE3

Vishay Siliconix
MOSFET P-CH 200V 0.95A 6-TSOP



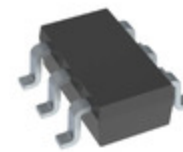
SI3493DDV-T1-GE3

Vishay Siliconix
MOSFET P-CHANNEL 20V 8A 6TSOP



SI3483DV-T1-E3

Vishay Siliconix
MOSFET P-CH 30V 4.7A 6TSOP



SI3476DV-T1-GE3

Vishay Siliconix
MOSFET N-CH 80V 4.6A 6TSOP

Shipment

Delivery Time

In-stock items can be shipped within 24 hours. Some parts will be arranged for delivery within 1-2 days from the date all items arrive at our warehouse. And Allelco ships order once a day at about 17:00, except Sunday. Once the goods are shipped, the estimated delivery time depends on the shipping methods and Delivery destination. The table below shows are the logistic time for some common countries.

Delivery Cost

> Use your express account for shipment if you have one.

> Use our account for the shipment. Refer to the table below for the approximate charges.

(Different time frame / countries / package size has different price.)

Delivery Method

> Global Common Shipment by DHL / UPS / FedEx / TNT / EMS / SF we support.

> Others more shipping ways, please get in touch with your customer manager.

Common Countries Logistic Time Reference		
Region	Country	Logistic Time(Day)
America	United States	5
	Brazil	7
Europe	Germany	5
	United Kingdom	4
	Italy	5
Oceania	Australia	6
	New Zealand	7
Asia	India	6
	Japan	7
Middle East	Israel	6

DHL & FedEx Shipment Charges Reference	
Shipment charges(KG)	Reference DHL(USD\$)
0.00kg-1.00kg	USD\$60.00
1.00kg-2.00kg	USD\$70.00
2.00kg-3.00kg	USD\$80.00

Note: The above table is for reference only. There may have some data bias for the uncontrollable factors.

Contact us if you have any questions.

Payment Support

The payment method can be chosen from the methods shown below:

Wire Transfer (T/T, Bank Transfer), Western Union, Credit card, PayPal.



Your Faithful Supply Chain Partner -



Efficient Supply Management



Cost-Saving Procurement



Fast Sourcing & Delivery

Contact us if you have any questions.



Phone

+00852 9146 4856



Email

info@allelco.com

Certifications & Memberships



View More