



Image may be representation.
See specifications for product details.



MCP1665T-E/MRA

Manufacturer Part Number	MCP1665T-E/MRA
Manufacturer	Microchip Technology
Allelco Part Number	32D-MCP1665T-E/MRA
ECAD Model	PCB Symbol, Footprint & 3D Model
Parts Description	IC REG BOOST ADJ 1A 10VQFN
Package	10-VFQFN Exposed Pad
Data sheet	MCP1665.pdf
RoHs Status	ROHS3 Compliant

Get a Quote

MCP1665T-E/MRA - Microchip Technology.New Original in Stock. Download Linear Technology MCP1665T-E/MRA datasheet/specifications on AllelcoElec.com.
Request a quote for MCP1665T-E/MRA, please send us email: info@allelco.com

Specifications

MCP1665T-E/MRA Tech Specifications
MCP1665T-E/MRA - Microchip Technology technical specifications, attributes, parameters

Product Attribute	Attribute Value	Product Attribute	Attribute Value
Manufacturer	Microchip Technology	Package	Tape & Reel (TR)
Voltage - Output (Min/Fixed)	2.8V	Output Type	Adjustable
Voltage - Output (Max)	32V	Output Configuration	Positive
Voltage - Input (Min)	2.7V	Operating Temperature	-40°C ~ 125°C (TA)
Voltage - Input (Max)	5V	Number of Outputs	1
Topology	Boost	Mounting Type	Surface Mount
Synchronous Rectifier	No	Function	Step-Up
Supplier Device Package	10-VQFN (2x2)	Frequency - Switching	575kHz
Series	-	Current - Output	1A
Package / Case	10-VFQFN Exposed Pad	Base Product Number	MCP1665

Parts with Similar Specifications

The three parts on the right have similar specifications to Microchip Technology MCP1665T-E/MRA

Product Attribute				
Part Number	MCP1665T-E/MRA	MCP1663T-E/OT	MCP1661T-E/OT	MCP1663T-E/MNY
Manufacturer	Microchip Technology	Microchip Technology	Microchip Technology	Microchip Technology
Mounting Type	Surface Mount	Surface Mount	Surface Mount	Surface Mount
Base Product Number	MCP1665	MCP1663	MCP1661	MCP1663
Number of Outputs	1	1	1	1
Current - Output	1A	375mA	200mA	375mA
Package	Tape & Reel (TR)	Tape & Reel (TR)	Tape & Reel (TR)	Tape & Reel (TR)
Series	-	-	-	-
Supplier Device Package	10-VQFN (2x2)	SOT-23-5	SOT-23-5	8-TDFN (2x3)
Synchronous Rectifier	No	No	No	No
Voltage - Input (Max)	5V	5.5V	5.5V	5.5V
Output Configuration	Positive	Positive	Positive	Positive
Voltage - Output (Min/Fixed)	2.8V	2.4V	2.4V	2.4V
Topology	Boost	Boost	Boost	Boost
Voltage - Output (Max)	32V	32V	32V	32V
Frequency - Switching	575kHz	500kHz	500kHz	500kHz
Voltage - Input (Min)	2.7V	2.4V	2.4V	2.4V
Output Type	Adjustable	Adjustable	Adjustable	Adjustable
Operating Temperature	-40°C ~ 125°C (TA)	-40°C ~ 125°C (TA)	-40°C ~ 125°C (TA)	-40°C ~ 125°C (TA)
Function	Step-Up	Step-Up	Step-Up	Step-Up
Package / Case	10-VFQFN Exposed Pad	SC-74A, SOT-753	SC-74A, SOT-753	8-WDFN Exposed Pad

MCP1665T-E/MRA Datasheet PDF

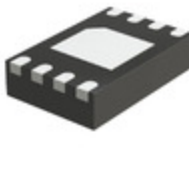
Download MCP1665T-E/MRA pdf datasheets and Microchip Technology documentation for MCP1665T-E/MRA - Microchip Technology.

Datasheets

MCP1665.pdf

Customers Also Interested in

Recommended Products

**MCP1663T-E/OT**Microchip Technology
IC REG BOOST 32V 375MA SOT23-5**MCP1700-4002E/TO**Microchip Technology
IC REG LINEAR 4V 250MA TO92-3**MCP1664T-E/MNY**Microchip Technology
IC LED DRV RGLTR PWM 300MA
8TDFN**MCP1700-1802E/TO**Microchip Technology
IC REG LINEAR 1.8V 200MA TO92-3**MCP1664T-E/OT**Microchip Technology
IC LED DRVR RGLTR PWM SOT23-5**MCP1653R-E/UN**Microchip Technology
IC REG CTRLR MULT TOP 10MSOP**MCP1662T-E/OT**Microchip Technology
IC LED DRVR RGLTR PWM SOT23-5**MCP1700-1202E/TO**Microchip Technology
IC REG LINEAR 1.2V 200MA TO92-3**MCP1652ST-E/MS**Microchip Technology
IC REG CTRLR MULT TOPOLOGY
8MSOP**MCP1700-1502E/TO**Microchip Technology
IC REG LINEAR 1.5V 200MA TO92-3**MCP1700-2502E/TO**Microchip Technology
IC REG LINEAR 2.5V 250MA TO92-3**MCP1661T-E/OT**Microchip Technology
IC REG BOOST ADJ 200MA SOT23-5**MCP1663T-E/MNY**Microchip Technology
IC REG BOOST 32V 375MA 8TDFN**MCP1651S-E/MS**Microchip Technology
IC REG CTRLR MULT TOPOLOGY
8MSOP**MCP1700-3002E/TO**Microchip Technology
IC REG LINEAR 3V 250MA TO92-3**MCP1700-3302E/TO**Microchip Technology
IC REG LINEAR 3.3V 250MA TO92-3**MCP1662T-E/MNY**Microchip Technology
IC LED DRV RGLTR PWM 200MA
8TDFN**MCP1700-2702E/TO**Microchip Technology
IC REG LINEAR 2.7V 250MA TO92-3

Shipment

Delivery Time

In-stock items can be shipped within 24 hours. Some parts will be arranged for delivery within 1-2 days from the date all items arrive at our warehouse. And Allelco ships order once a day at about 17:00, except Sunday. Once the goods are shipped, the estimated delivery time depends on the shipping methods and Delivery destination. The table below shows are the logistic time for some common countries.

Delivery Cost

> Use your express account for shipment if you have one.

> Use our account for the shipment. Refer to the table below for the approximate charges.

(Different time frame / countries / package size has different price.)

Delivery Method

> Global Common Shipment by DHL / UPS / FedEx / TNT / EMS / SF we support.

> Others more shipping ways, please get in touch with your customer manager.

Common Countries Logistic Time Reference		
Region	Country	Logistic Time(Day)
America	United States	5
	Brazil	7
Europe	Germany	5
	United Kingdom	4
	Italy	5
Oceania	Australia	6
	New Zealand	7
Asia	India	6
	Japan	7
Middle East	Israel	6

DHL & FedEx Shipment Charges Reference	
Shipment charges(KG)	Reference DHL(USD\$)
0.00kg-1.00kg	USD\$60.00
1.00kg-2.00kg	USD\$70.00
2.00kg-3.00kg	USD\$80.00

Note: The above table is for reference only. There may have some data bias for the uncontrollable factors.

Contact us if you have any questions.

Payment Support

The payment method can be chosen from the methods shown below:
Wire Transfer (T/T, Bank Transfer), Western Union, Credit card,
PayPal.



Your Faithful Supply Chain Partner -



Efficient Supply
Management



Cost-Saving
Procurement



Fast Sourcing &
Delivery

Contact us if you have any questions.



Phone
+00852 9146 4856



Email
info@allelco.com

Certifications & Memberships



[View More](#)