



Image may be representation.
See specifications for product details.



STTH8L06G-TR

Manufacturer Part Number	STTH8L06G-TR
Manufacturer	STMicroelectronics
Allelco Part Number	32D-STTH8L06G-TR
ECAD Model	PCB Footprint and Symbol
Parts Description	DIODE GEN PURP 600V 8A D2PAK
Package	TO-263-3, D ² Pak (2 Leads + Tab), TO-263AB
Data sheet	STTH8L06.pdf
RoHs Status	ROHS3 Compliant

[Get a Quote](#)

STTH8L06G-TR - STMicroelectronics.New Original in Stock. Download Linear Technology STTH8L06G-TR datasheet/specifications on AllelcoElec.com.
Request a quote for STTH8L06G-TR, please send us email: info@allelco.com

Specifications

STTH8L06G-TR Tech Specifications
STTH8L06G-TR - STMicroelectronics technical specifications, attributes, parameters

Product Attribute	Attribute Value	Product Attribute	Attribute Value
Manufacturer	STMicroelectronics	Package / Case	TO-263-3, D ² Pak (2 Leads + Tab), TO-263AB
Voltage - Forward (Vf) (Max) @ If	1.3 V @ 8 A	Package	Tape & Reel (TR)
Voltage - DC Reverse (Vr) (Max)	600 V	Operating Temperature - Junction	175°C (Max)
Technology	Standard	Mounting Type	Surface Mount
Supplier Device Package	D2PAK	Current - Reverse Leakage @ Vr	8 µA @ 600 V
Speed	Fast Recovery =< 500ns, > 200mA (Io)	Current - Average Rectified (Io)	8A
Series	-	Capacitance @ Vr, F	-
Reverse Recovery Time (trr)	105 ns	Base Product Number	STTH8

Parts with Similar Specifications

The three parts on the right have similar specifications to STMicroelectronics STTH8L06G-TR

Product Attribute				
Part Number	STTH8L06G-TR	STTH8L06G	STTH8R03DJF-TR	STTH8R03D
Manufacturer	STMicroelectronics	STMicroelectronics	STMicroelectronics	STMicroelectronics
Current - Reverse Leakage @ Vr	8 µA @ 600 V	8 µA @ 600 V	40 µA @ 300 V	10 µA @ 300 V
Base Product Number	STTH8	STTH8L06	STTH8	STTH8
Package / Case	TO-263-3, D ² Pak (2 Leads + Tab), TO-263AB	TO-263-3, D ² Pak (2 Leads + Tab), TO-263AB	8-PowerVDFN	TO-220-2
Voltage - DC Reverse (Vr) (Max)	600 V	600 V	300 V	300 V
Reverse Recovery Time (trr)	105 ns	105 ns	50 ns	30 ns
Speed	Fast Recovery =< 500ns, > 200mA (Io)	Fast Recovery =< 500ns, > 200mA (Io)	Fast Recovery =< 500ns, > 200mA (Io)	Fast Recovery =< 500ns, > 200mA (Io)
Current - Average Rectified (Io)	8A	8A	8A	8A
Capacitance @ Vr, F	-	-	-	-
Package	Tape & Reel (TR)	Tube	Tape & Reel (TR)	Tube
Series	-	-	-	TURBOSWITCH™
Voltage - Forward (Vf) (Max) @ If	1.3 V @ 8 A	1.3 V @ 8 A	1.3 V @ 8 A	1.8 V @ 8 A
Mounting Type	Surface Mount	Surface Mount	Surface Mount	Through Hole
Technology	Standard	Standard	Standard	Standard
Operating Temperature - Junction	175°C (Max)	175°C (Max)	175°C (Max)	175°C (Max)
Supplier Device Package	D2PAK	D2PAK	PowerFlat™ (5x6)	TO-220AC

STTH8L06G-TR Datasheet PDF

Download STTH8L06G-TR pdf datasheets and STMicroelectronics documentation for STTH8L06G-TR - STMicroelectronics.

Datasheets

[STTH8L06.pdf](#)

PCN Packaging

[Box Label Chg 28/Jul/2016.pdf](#)

[Mult Dev Inner Box Chg 9/Dec/2021.pdf](#)

PCN Assembly/Origin

[Mult Devices Wafer 14/May/2018.pdf](#)

PCN Design/Specification

[D2PAK Lead Modification 04/Oct/2013.pdf](#)

Customers Also Interested in

Recommended Products



STTH8L06G

STMicroelectronics
DIODE GEN PURP 600V 8A D2PAK

STTH8L02DDJFY-TR

STMicroelectronics
DIODE ARRAY GP 200V 4A PWRFLAT

STTH8R03DJF-TR

STMicroelectronics
DIODE GEN PURP 300V 8A
POWERFLAT

STTH8R03D

STMicroelectronics
DIODE GEN PURP 300V 8A TO220AC

STTH8L06R

STMicroelectronics

STTH8R04D

STMicroelectronics
DIODE GEN PURP 400V 8A TO220AC



STTH8L06DIRG

STMicroelectronics
DIODE GP 600V 8A TO220AC INS

STTH8L06FP

STMicroelectronics
DIODE GEN PURP 600V 8A
TO220FPAC

STTH8L06D

STMicroelectronics
DIODE GEN PURP 600V 8A TO220AC

STTH8L06DI

STMicroelectronics

STTH8R03G-TR

STMicroelectronics

STTH812G-TR

STMicroelectronics
DIODE GEN PURP 1.2KV 8A D2PAK



STTH8L06G MOS

STMicroelectronics

STTH8R04DI

STMicroelectronics
DIODE GP 400V 8A TO220AC INS

STTH8L06

STMicroelectronics

STTH8R03L

STMicroelectronics

STTH812FP

STMicroelectronics
DIODE GP 1.2KV 8A TO220FPAC

STTH8L06R-H

STMicroelectronics

Shipment

Delivery Time

In-stock items can be shipped within 24 hours. Some parts will be arranged for delivery within 1-2 days from the date all items arrive at our warehouse. And Allelco ships order once a day at about 17:00, except Sunday. Once the goods are shipped, the estimated delivery time depends on the shipping methods and Delivery destination. The table below shows are the logistic time for some common countries.

Delivery Cost

> Use your express account for shipment if you have one.

> Use our account for the shipment. Refer to the table below for the approximate charges.

(Different time frame / countries / package size has different price.)

Delivery Method

> Global Common Shipment by DHL / UPS / FedEx / TNT / EMS / SF we support.

> Others more shipping ways, please get in touch with your customer manager.

Common Countries Logistic Time Reference		
Region	Country	Logistic Time(Day)
America	United States	5
	Brazil	7
Europe	Germany	5
	United Kingdom	4
	Italy	5
Oceania	Australia	6
	New Zealand	7
Asia	India	6
	Japan	7
Middle East	Israel	6

DHL & FedEx Shipment Charges Reference	
Shipment charges(KG)	Reference DHL(USD\$)
0.00kg-1.00kg	USD\$60.00
1.00kg-2.00kg	USD\$70.00
2.00kg-3.00kg	USD\$80.00

Note: The above table is for reference only. There may have some data bias for the uncontrollable factors.

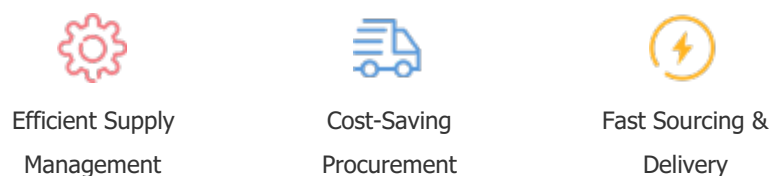
Contact us if you have any questions.

Payment Support

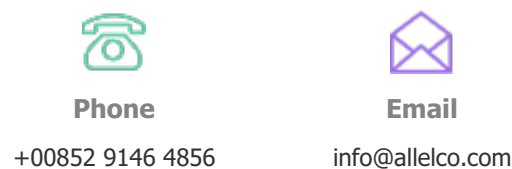
The payment method can be chosen from the methods shown below:
Wire Transfer (T/T, Bank Transfer), Western Union, Credit card,
PayPal.



Your Faithful Supply Chain Partner -



Contact us if you have any questions.



Certifications & Memberships



View More