

Image may be representation.
See specifications for product details.



5CSXFC2C6U23C7N

Manufacturer Part Number	5CSXFC2C6U23C7N
Manufacturer	Intel
Allelco Part Number	32D-5CSXFC2C6U23C7N
ECAD Model	Request Free CAD Models
Parts Description	IC SOC CORTEX-A9 800MHZ 672UBGA
Package	672-FBGA
Data sheet	Cyclone V Device Handbook.pdf Cyclone V Device Overview.pdf
RoHs Status	RoHS Compliant

Get a Quote

5CSXFC2C6U23C7N - Intel.New Original in Stock. Download Linear Technology 5CSXFC2C6U23C7N datasheet/specifications on AllelcoElec.com.
Request a quote for 5CSXFC2C6U23C7N, please send us email: info@allelco.com

Specifications

5CSXFC2C6U23C7N Tech Specifications
5CSXFC2C6U23C7N - Intel technical specifications, attributes, parameters

Product Attribute	Attribute Value	Product Attribute	Attribute Value
Manufacturer	Intel	Package	Tray
Supplier Device Package	672-UBGA (23x23)	Operating Temperature	0°C ~ 85°C (TJ)
Speed	800MHz	Number of I/O	MCU - 181, FPGA - 145
Series	Cyclone® V SX	Flash Size	-
RAM Size	64KB	Core Processor	Dual ARM® Cortex®-A9 MPCore™ with CoreSight™
Primary Attributes	FPGA - 25K Logic Elements	Connectivity	CANbus, EBI/EMI, Ethernet, I²C, MMC/SD/SDIO, SPI, UART/USART, USB OTG
Peripherals	DMA, POR, WDT	Architecture	MCU, FPGA
Package / Case	672-FBGA		

Parts with Similar Specifications

The three parts on the right have similar specifications to Intel 5CSXFC2C6U23C7N

Product Attribute				
Part Number	5CSXFC2C6U23C7N	5CSXFC2C6U23I7N	5CSXFC5D6F31C7N	5CSEMA5F31C8N
Manufacturer	Intel	Intel	Intel	Intel
RAM Size	64KB	64KB	64KB	64KB
Speed	800MHz	800MHz	800MHz	600MHz
Number of I/O	MCU - 181, FPGA - 145	MCU - 181, FPGA - 145	MCU - 181, FPGA - 288	MCU - 181, FPGA - 288
Series	Cyclone® V SX	Cyclone® V SX	Cyclone® V SX	Cyclone® V SE
Package / Case	672-FBGA	672-FBGA	896-BGA	896-BGA
Core Processor	Dual ARM® Cortex®-A9 MPCore™ with CoreSight™	Dual ARM® Cortex®-A9 MPCore™ with CoreSight™	Dual ARM® Cortex®-A9 MPCore™ with CoreSight™	Dual ARM® Cortex®-A9 MPCore™ with CoreSight™
Primary Attributes	FPGA - 25K Logic Elements	FPGA - 25K Logic Elements	FPGA - 85K Logic Elements	FPGA - 85K Logic Elements
Package	Tray	Tray	Tray	Tray
Operating Temperature	0°C ~ 85°C (TJ)	-40°C ~ 100°C (TJ)	0°C ~ 85°C (TJ)	0°C ~ 85°C (TJ)
Supplier Device Package	672-UBGA (23x23)	672-UBGA (23x23)	896-FBGA (31x31)	896-FBGA (31x31)
Flash Size	-	-	-	-
Connectivity	CANbus, EBI/EMI, Ethernet, I²C, MMC/SD/SDIO, SPI, UART/USART, USB OTG	CANbus, EBI/EMI, Ethernet, I²C, MMC/SD/SDIO, SPI, UART/USART, USB OTG	CANbus, EBI/EMI, Ethernet, I²C, MMC/SD/SDIO, SPI, UART/USART, USB OTG	CANbus, EBI/EMI, Ethernet, I²C, MMC/SD/SDIO, SPI, UART/USART, USB OTG
Peripherals	DMA, POR, WDT	DMA, POR, WDT	DMA, POR, WDT	DMA, POR, WDT
Architecture	MCU, FPGA	MCU, FPGA	MCU, FPGA	MCU, FPGA

5CSXFC2C6U23C7N Datasheet PDF

Download 5CSXFC2C6U23C7N pdf datasheets and Intel documentation for 5CSXFC2C6U23C7N - Intel.

Datasheets

[Cyclone V Device Handbook.pdf](#)

[Cyclone V Device Overview.pdf](#)

PCN Packaging

[Mult Dev Label CHG 24/Jan/2020.pdf](#)

[Mult Dev Label Chgs 24/Feb/2020.pdf](#)

PCN Design/Specification

[Quartus SW/Web Chgs 23/Sep/2021.pdf](#)

[Mult Dev Software Chgs 3/Jun/2021.pdf](#)

Errata

[Cyclone V GX,GT,E Errata.pdf](#)

Customers Also Interested in

Recommended Products



5CSXFC2C6U23I7N

Intel
IC SOC CORTEX-A9 800MHZ
672UBGA



5CSXFC5D6F31C7N

Intel
IC SOC CORTEX-A9 800MHZ
896FBGA



5CSEMA5F31C8N

Intel
IC SOC CORTEX-A9 600MHZ
896FBGA



5CSXFC5D6F31C6N

Intel
IC SOC CORTEX-A9 925MHZ
896FBGA



5CSEMA5F31C6N

Intel
IC SOC CORTEX-A9 925MHZ
896FBGA



5CSEMA5F31I7N

Intel
IC SOC CORTEX-A9 800MHZ
896FBGA



5CSXFC5C6U23C7N

Intel
IC SOC CORTEX-A9 800MHZ
672UBGA



5CSXFC5C6U23C8N

Intel
IC SOC CORTEX-A9 600MHZ
672UBGA



5CSEMA6F31C8N

Intel
IC SOC CORTEX-A9 600MHZ
896FBGA



5CSEMA5F31C7N

Intel
IC SOC CORTEX-A9 800MHZ
896FBGA



5CSEMA6U23C8N

Intel
IC SOC CORTEX-A9 600MHZ
672UBGA



5CSEMA5U23C6N

Intel
IC SOC CORTEX-A9 925MHZ
672UBGA



5CSXFC5C6U23I7N

Intel
IC SOC CORTEX-A9 800MHZ
672UBGA



5CSEMA6F31C7N

Intel
IC SOC CORTEX-A9 800MHZ
896FBGA



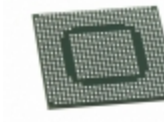
5CSEMA6U23I7N

Intel
IC SOC CORTEX-A9 800MHZ
672UBGA



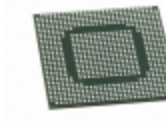
5CSEMA5U23I7N

Intel
IC SOC CORTEX-A9 800MHZ
672UBGA



5CSXFC4C6U23I7N

Intel
IC SOC CORTEX-A9 800MHZ
672UBGA



5CSXFC4C6U23C7N

Intel
IC SOC CORTEX-A9 800MHZ
672UBGA

Shipment

Delivery Time

In-stock items can be shipped within 24 hours. Some parts will be arranged for delivery within 1-2 days from the date all items arrive at our warehouse. And Allelco ships order once a day at about 17:00, except Sunday. Once the goods are shipped, the estimated delivery time depends on the shipping methods and Delivery destination. The table below shows are the logistic time for some common countries.

Delivery Cost

> Use your express account for shipment if you have one.

> Use our account for the shipment. Refer to the table below for the approximate charges.

(Different time frame / countries / package size has different price.)

Delivery Method

> Global Common Shipment by DHL / UPS / FedEx / TNT / EMS / SF we support.

> Others more shipping ways, please get in touch with your customer manager.

Common Countries Logistic Time Reference

Region	Country	Logistic Time(Day)
America	United States	5
	Brazil	7
Europe	Germany	5
	United Kingdom	4
	Italy	5
Oceania	Australia	6
	New Zealand	7
Asia	India	6
	Japan	7
Middle East	Israel	6

DHL & FedEx Shipment Charges Reference

Shipment charges(KG)	Reference DHL(USD\$)
0.00kg-1.00kg	USD\$60.00
1.00kg-2.00kg	USD\$70.00
2.00kg-3.00kg	USD\$80.00

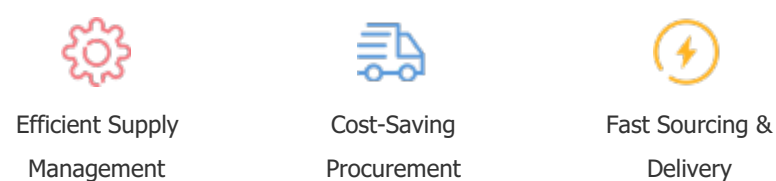
Note: The above table is for reference only. There may have some data bias for the uncontrollable factors.
Contact us if you have any questions.

Payment Support

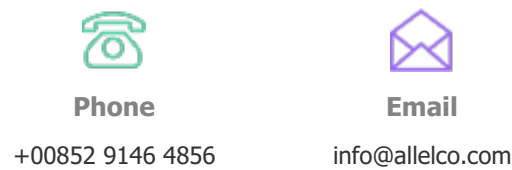
The payment method can be chosen from the methods shown below:
Wire Transfer (T/T, Bank Transfer), Western Union, Credit card,
PayPal.



Your Faithful Supply Chain Partner -



Contact us if you have any questions.



Certifications & Memberships



View More