



Image may be representation.  
See specifications for product details.



## ADM8616WCYAKSZ-RL7

Manufacturer Part Number	<b>ADM8616WCYAKSZ-RL7</b>
Manufacturer	<b>Analog Devices, Inc.</b>
Allelco Part Number	32D-ADM8616WCYAKSZ-RL7
ECAD Model	Request Free CAD Models
Parts Description	IC SUPERVISOR 1 CHANNEL SC70-4
Package	SC-82A, SOT-343
Data sheet	<b>Cylindrical Battery Holders.pdf</b>
RoHs Status	<b>ROHS3 Compliant</b>

**Get a Quote**

ADM8616WCYAKSZ-RL7 - Analog Devices Inc..New Original in Stock. Download Linear Technology ADM8616WCYAKSZ-RL7 datasheet/specifications on AllelcoElec.com. Request a quote for ADM8616WCYAKSZ-RL7, please send us email: [info@allelco.com](mailto:info@allelco.com)

### Specifications

ADM8616WCYAKSZ-RL7 Tech Specifications  
ADM8616WCYAKSZ-RL7 - Analog Devices Inc. technical specifications, attributes, parameters

Product Attribute	Attribute Value	Product Attribute	Attribute Value
Manufacturer	Analog Devices, Inc.	Package / Case	SC-82A, SOT-343
Voltage - Threshold	1.67V	Package	Tape & Reel (TR)
Type	Simple Reset/Power-On Reset	Output	Push-Pull, Totem Pole
Supplier Device Package	SC-70-4	Operating Temperature	-40°C ~ 85°C (TA)
Series	-	Number of Voltages Monitored	1
Reset Timeout	140ms Minimum	Mounting Type	Surface Mount
Reset	Active Low	Base Product Number	ADM8616

### Parts with Similar Specifications

The three parts on the right have similar specifications to Analog Devices Inc. ADM8616WCYAKSZ-RL7

Product Attribute				
Part Number	ADM8616WCYAKSZ-RL7	<a href="#">ADM8613Z232ACBZ-R7</a>	<a href="#">ADM8615Z050ACBZ-R7</a>	<a href="#">ADM8617RCYAKSZ-RL7</a>
Manufacturer	Analog Devices Inc.	Analog Devices Inc.	Analog Devices Inc.	Analog Devices Inc.
Series	-	-	-	-
Package / Case	SC-82A, SOT-343	6-WFBGA, WLCSP	6-WFBGA, WLCSP	SC-82A, SOT-343
Type	Simple Reset/Power-On Reset	Simple Reset/Power-On Reset	Simple Reset/Power-On Reset	Simple Reset/Power-On Reset
Mounting Type	Surface Mount	Surface Mount	Surface Mount	Surface Mount
Base Product Number	ADM8616	ADM8613	ADM8615	ADM8617
Reset	Active Low	Active Low	Active Low	Active Low
Output	Push-Pull, Totem Pole	Open Drain or Open Collector	Open Drain or Open Collector	Open Drain or Open Collector
Package	Tape & Reel (TR)	Tape & Reel (TR)	Tape & Reel (TR)	Tape & Reel (TR)
Reset Timeout	140ms Minimum	200ms Typical	170ms Minimum	140ms Minimum
Supplier Device Package	SC-70-4	6-WLCSP (0.96x1.46)	6-WLCSP (0.96x1.46)	SC-70-4
Operating Temperature	-40°C ~ 85°C (TA)	-40°C ~ 85°C (TA)	-40°C ~ 85°C (TA)	-40°C ~ 85°C (TA)
Voltage - Threshold	1.67V	2.32V	0.5V	2.63V
Number of Voltages Monitored	1	1	1	1

### ADM8616WCYAKSZ-RL7 Datasheet PDF

Download ADM8616WCYAKSZ-RL7 pdf datasheets and Analog Devices Inc. documentation for ADM8616WCYAKSZ-RL7 - Analog Devices Inc..

#### Datasheets

[Cylindrical Battery Holders.pdf](#)

#### Other Related Documents

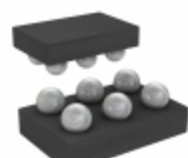
[Tape and Reel Packaging.pdf](#)

### Customers Also Interested in

#### Recommended Products



**ADM8611LABKSZ-RL7**  
ANALOGIC



**ADM8613Z232ACBZ-R7**  
Analog Devices Inc.  
IC SUPERVISOR 1 CHANNEL 6WLCSP



**ADM8615Z050ACBZ-R7**  
Analog Devices Inc.  
IC SUPERVISOR 1 CHANNEL 6WLCSP



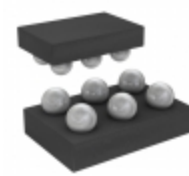
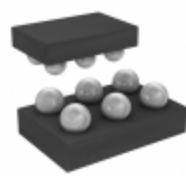
**ADM8617SAYAKSZ**  
ADI (Analog Devices, Inc.)



**ADM8618RACYKS-RL7**  
ADI (Analog Devices, Inc.)



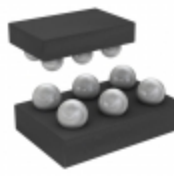
**ADM8611WABKS-RL7**  
ADI (Analog Devices, Inc.)

**ADM8617RCYAKSZ-RL7**Analog Devices Inc.  
IC SUPERVISOR 1 CHANNEL SC70-4**ADM8616**

ADI (Analog Devices, Inc.)

**ADM8615Y100ACBZ-R7**Analog Devices Inc.  
IC SUPERVISOR 1 CHANNEL 6WLCSP**ADM8628**

ADMTEK

**ADM8614Y263ACBZ-R7**Analog Devices Inc.  
IC SUPERVISOR 1 CHANNEL 6WLCSP**ADM8617SAYAKSZ-RL7**Analog Devices Inc.  
IC SUPERVISOR 1 CHANNEL SC70-4**ADM8617RCYAKSZ**

ADI (Analog Devices, Inc.)

**ADM8614ARTZ-REEL7**

ADI (Analog Devices, Inc.)

**ADM8628-AA-T-1**Cypress Semiconductor  
(Infineon Technologies)**ADM8613Y232ACBZ-R7**Analog Devices Inc.  
IC SUPERVISOR 1 CHANNEL 6WLCSP**ADM8616LCYAKSZ-RL7**Analog Devices Inc.  
IC SUPERVISOR 1 CHANNEL SC70-4**ADM8616YCYAKS**

ADI (Analog Devices, Inc.)

## Shipment

### Delivery Time

In-stock items can be shipped within 24 hours. Some parts will be arranged for delivery within 1-2 days from the date all items arrive at our warehouse. And Allelco ships order once a day at about 17:00, except Sunday. Once the goods are shipped, the estimated delivery time depends on the shipping methods and Delivery destination. The table below shows are the logistic time for some common countries.

### Delivery Cost

> Use your express account for shipment if you have one.

> Use our account for the shipment. Refer to the table below for the approximate charges.

(Different time frame / countries / package size has different price.)

### Delivery Method

> Global Common Shipment by DHL / UPS / FedEx / TNT / EMS / SF we support.

> Others more shipping ways, please get in touch with your customer manager.

**Common Countries Logistic Time Reference**

Region	Country	Logistic Time(Day)
America	United States	5
	Brazil	7
Europe	Germany	5
	United Kingdom	4
	Italy	5
Oceania	Australia	6
	New Zealand	7
Asia	India	6
	Japan	7
Middle East	Israel	6

**DHL & FedEx Shipment Charges Reference**

Shipment charges(KG)	Reference DHL(USD\$)
0.00kg-1.00kg	USD\$60.00
1.00kg-2.00kg	USD\$70.00
2.00kg-3.00kg	USD\$80.00

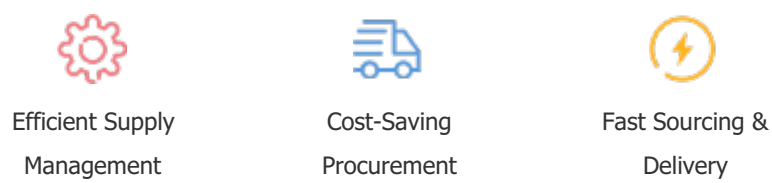
Note: The above table is for reference only. There may have some data bias for the uncontrollable factors.  
Contact us if you have any questions.

## Payment Support

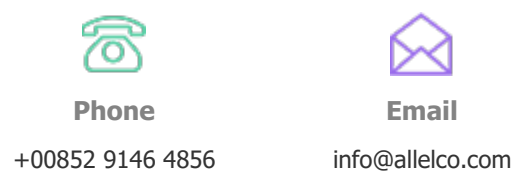
The payment method can be chosen from the methods shown below:  
Wire Transfer (T/T, Bank Transfer), Western Union, Credit card,  
PayPal.



## Your Faithful Supply Chain Partner -



Contact us if you have any questions.



## Certifications & Memberships



[View More](#)



### Contact us

Address: Flat/Rm C 13/F Harvard Commercial Building 105-111 Thomson Road, Wan Chai, Hong Kong

Phone: +00852 9146 4856

Fax: +00852 3010 8510

Email: info@Allelco.com

Copyright © 2012-2023 AllelcoElec.com. All rights reserved.