



# ADA4004-4ARZ

Manufacturer Part Number	<b>ADA4004-4ARZ</b>
Manufacturer	<b>Analog Devices, Inc.</b>
Allelco Part Number	32D-ADA4004-4ARZ
ECAD Model	PCB Symbol, Footprint & 3D Mode
Parts Description	IC OPAMP GP 4 CIRCUIT 14SOIC
Package	14-SOIC (0.154", 3.90mm Width)
Data sheet	ADA4004-4ARZ.pdf
RoHS Status	ROHS3 Compliant



[Get a Quote](#)

ADA4004-4ARZ - Analog Devices Inc..New Original in Stock. Download Linear Technology ADA4004-4ARZ datasheet/specifications on AllelcoElec.com.  
Request a quote for ADA4004-4ARZ, please send us email: [info@allelco.com](mailto:info@allelco.com)

## Specifications

ADA4004-4ARZ Tech Specifications

ADA4004-4ARZ - Analog Devices Inc. technical specifications, attributes, parameters

Product Attribute	Attribute Value	Product Attribute	Attribute Value
Manufacturer	Analog Devices, Inc.	Operating Temperature	-40°C ~ 125°C
Voltage - Supply Span (Min)	10 V	Number of Circuits	4
Voltage - Supply Span (Max)	30 V	Mounting Type	Surface Mount
Voltage - Input Offset	40 µV	Gain Bandwidth Product	12 MHz
Supplier Device Package	14-SOIC	Current - Supply	-
Slew Rate	2.7V/µs	Current - Output / Channel	10 mA
Series	iPolar®	Current - Input Bias	40 nA
Package / Case	14-SOIC (0.154", 3.90mm Width)	Base Product Number	ADA4004
Package	Tube	Amplifier Type	General Purpose
Output Type	-		

## Parts with Similar Specifications

The three parts on the right have similar specifications to Analog Devices Inc. ADA4004-4ARZ

Product Attribute				
Part Number	ADA4004-4ARZ	ADA4004-2ARZ-R7	ADA4001-2ARZ	ADA4051-1ARJZ-R7
Manufacturer	Analog Devices Inc.	Analog Devices Inc.	Analog Devices Inc.	Analog Devices Inc.
Supplier Device Package	14-SOIC	8-SOIC	8-SOIC	SOT-23-5
Voltage - Supply Span (Max)	30 V	30 V	36 V	5.5 V
Current - Output / Channel	10 mA	10 mA	50 mA	15 mA
Base Product Number	ADA4004	ADA4004	ADA4001	ADA4051
Voltage - Supply Span (Min)	10 V	10 V	10 V	1.8 V
Package / Case	14-SOIC (0.154", 3.90mm Width)	8-SOIC (0.154", 3.90mm Width)	8-SOIC (0.154", 3.90mm Width)	SC-74A, SOT-753
Slew Rate	2.7V/µs	2.7V/µs	25V/µs	0.06V/µs
Amplifier Type	General Purpose	General Purpose	J-FET	Zero-Drift
Output Type	-	-	Rail-to-Rail	Rail-to-Rail
Voltage - Input Offset	40 µV	40 µV	500 µV	2 µV
Gain Bandwidth Product	12 MHz	12 MHz	16.7 MHz	125 kHz
Mounting Type	Surface Mount	Surface Mount	Surface Mount	Surface Mount
Current - Input Bias	40 nA	40 nA	20 pA	20 pA
Current - Supply	-	-	2mA (x2 Channels)	15µA
Operating Temperature	-40°C ~ 125°C	-40°C ~ 125°C	-40°C ~ 125°C	-40°C ~ 125°C
Package	Tube	Tape & Reel (TR)	Tube	Tape & Reel (TR)
Number of Circuits	4	2	2	1
Series	iPolar®	iPolar®	-	-

## Customers Also Interested in

### Recommended Products



**ADA4004-2ARZ-R7**

Analog Devices Inc.  
IC OPAMP GP 2 CIRCUIT 8SOIC



**ADA4001-2ARZ**

Analog Devices Inc.  
IC OPAMP JFET 2 CIRCUIT 8SOIC



**ADA4051-1ARJZ-R7**

Analog Devices Inc.  
IC OPAMP ZER-DRIFT 1CIRC SOT23-5



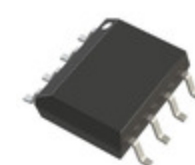
**ADA4004-2ARMZ**

Analog Devices Inc.  
IC OPAMP GP 2 CIRCUIT 8MSOP



**ADA4051-1ARJZ-R2**

Analog Devices Inc.  
IC OPAMP ZER-DRIFT 1CIRC SOT23-5



**ADA4004-2ARZ**

Analog Devices Inc.  
IC OPAMP GP 2 CIRCUIT 8SOIC



**ADA4051-1AKSZ**

ADI (Analog Devices, Inc.)

**ADA4051-1AKSZ-R7**Analog Devices Inc.  
IC OPAMP ZERO-DRIFT 1CIRC SC70-5**ADA4004-2ARMZ-R7**Analog Devices Inc.  
IC OPAMP GP 2 CIRCUIT 8MSOP**ADA4004-1ARZ**Analog Devices Inc.  
IC OPAMP GP 1 CIRCUIT 8SOIC**ADA4004-4ARZ-RL**Analog Devices Inc.  
IC OPAMP GP 4 CIRCUIT 14SOIC**ADA4001-2ARZ-RL**Analog Devices Inc.  
IC OPAMP JFET 2 CIRCUIT 8SOIC**ADA4004-1ARJZ**

ADI (Analog Devices, Inc.)

**ADA4051-1ARJZ-RL**Analog Devices Inc.  
IC OPAMP ZERO-DRIFT 1CIRC SOT23-5**ADA4001-2ARZ-R7**Analog Devices Inc.  
IC OPAMP JFET 2 CIRCUIT 8SOIC**ADA4004-1ARJZ-R7**Analog Devices Inc.  
IC OPAMP GP 1 CIRCUIT SOT23-5**ADA4051-2ACPZ-R7**Analog Devices Inc.  
IC OPAMP ZERO-DRIFT 2CIRC 8LFCSP**ADA4004-4ARZ-R7**Analog Devices Inc.  
IC OPAMP GP 4 CIRCUIT 14SOIC

## Shipment

### Delivery Time

In-stock items can be shipped within 24 hours. Some parts will be arranged for delivery within 1-2 days from the date all items arrive at our warehouse. And Allelco ships order once a day at about 17:00, except Sunday. Once the goods are shipped, the estimated delivery time depends on the shipping methods and Delivery destination. The table below shows are the logistic time for some common countries.

### Delivery Cost

> Use your express account for shipment if you have one.

> Use our account for the shipment. Refer to the table below for the approximate charges.

(Different time frame / countries / package size has different price.)

### Delivery Method

> Global Common Shipment by DHL / UPS / FedEx / TNT / EMS / SF we support.

> Others more shipping ways, please get in touch with your customer manager.

Common Countries Logistic Time Reference		
Region	Country	Logistic Time(Day)
America	United States	5
	Brazil	7
Europe	Germany	5
	United Kingdom	4
	Italy	5
Oceania	Australia	6
	New Zealand	7
Asia	India	6
	Japan	7
Middle East	Israel	6

DHL & FedEx Shipment Charges Reference	
Shipment charges(KG)	Reference DHL(USD\$)
0.00kg-1.00kg	USD\$60.00
1.00kg-2.00kg	USD\$70.00
2.00kg-3.00kg	USD\$80.00

Note: The above table is for reference only. There may have some data bias for the uncontrollable factors.

Contact us if you have any questions.

## Payment Support

The payment method can be chosen from the methods shown below:

Wire Transfer (T/T, Bank Transfer), Western Union, Credit card, PayPal.



## Your Faithful Supply Chain Partner -



Efficient Supply Management



Cost-Saving Procurement



Fast Sourcing & Delivery

Contact us if you have any questions.



Phone

+00852 9146 4856



Email

info@allelco.com

## Certifications & Memberships



[View More](#)



**ALLELCO LIMITED**  
WWW.ALLELCOELEC.COM

### Contact us

Address: Flat/Rm C 13/F Harvard Commercial Building 105-111 Thomson Road, Wan Chai, Hong Kong

Phone: +00852 9146 4856

Fax: +00852 3010 8510

Email: info@Allelco.com

Copyright © 2012-2023 AllelcoElec.com. All rights reserved.