



# GF1A-E3/67A

Manufacturer Part Number	<b>GF1A-E3/67A</b>
Manufacturer	<b>Vishay General Semiconductor – Diodes Division</b>
Allelco Part Number	32D-GF1A-E3/67A
ECAD Model	PCB Symbol, Footprint & 3D Mode
Parts Description	DIODE GEN PURP 50V 1A DO214BA
Package	DO-214BA
Data sheet	GF1A-E3/67A.pdf
RoHs Status	ROHS3 Compliant



**Get a Quote**

GF1A-E3/67A - Vishay General Semiconductor - Diodes Division. New Original in Stock. Download Linear Technology GF1A-E3/67A datasheet/specifications on AllelcoElec.com.  
Request a quote for GF1A-E3/67A, please send us email: [info@allelco.com](mailto:info@allelco.com)

## Specifications

GF1A-E3/67A Tech Specifications  
GF1A-E3/67A - Vishay General Semiconductor - Diodes Division technical specifications, attributes, parameters

Product Attribute	Attribute Value	Product Attribute	Attribute Value
Manufacturer	Vishay General Semiconductor – Diodes Division	Package / Case	DO-214BA
Voltage - Forward (Vf) (Max) @ If	1.1 V @ 1 A	Package	Tape & Reel (TR)
Voltage - DC Reverse (Vr) (Max)	50 V	Operating Temperature - Junction	-65°C ~ 175°C
Technology	Standard	Mounting Type	Surface Mount
Supplier Device Package	DO-214BA (GF1)	Current - Reverse Leakage @ Vr	5 µA @ 50 V
Speed	Standard Recovery >500ns, > 200mA (Io)	Current - Average Rectified (Io)	1A
Series	SUPERECTIFIER®	Capacitance @ Vr, F	15pF @ 4V, 1MHz
Reverse Recovery Time (trr)	2 µs	Base Product Number	GF1

## Parts with Similar Specifications

The three parts on the right have similar specifications to Vishay General Semiconductor - Diodes Division GF1A-E3/67A

Product Attribute	NO PICTURE			
Part Number	GF1A-E3/67A	<a href="#">GF1B-E3/67A</a>	<a href="#">GF1B/17A</a>	<a href="#">GF1D-E3/67A</a>
Manufacturer	Vishay General Semiconductor - Diodes Division	Vishay General Semiconductor - Diodes Division	Vishay General Semiconductor - Diodes Division	Vishay General Semiconductor - Diodes Division
Package / Case	DO-214BA	DO-214BA	DO-214BA	DO-214BA
Technology	Standard	Standard	Standard	Standard
Voltage - DC Reverse (Vr) (Max)	50 V	100 V	100 V	200 V
Voltage - Forward (Vf) (Max) @ If	1.1 V @ 1 A	1.1 V @ 1 A	1.1 V @ 1 A	1.1 V @ 1 A
Current - Reverse Leakage @ Vr	5 µA @ 50 V	5 µA @ 100 V	5 µA @ 100 V	5 µA @ 200 V
Mounting Type	Surface Mount	Surface Mount	Surface Mount	Surface Mount
Current - Average Rectified (Io)	1A	1A	1A	1A
Capacitance @ Vr, F	15pF @ 4V, 1MHz	-	-	-
Operating Temperature - Junction	-65°C ~ 175°C	-65°C ~ 175°C	-65°C ~ 175°C	-65°C ~ 175°C
Package	Tape & Reel (TR)	Tape & Reel (TR)	Tape & Reel (TR)	Tape & Reel (TR)
Series	SUPERECTIFIER®	SUPERECTIFIER®	SUPERECTIFIER®	SUPERECTIFIER®
Supplier Device Package	DO-214BA (GF1)	DO-214BA (GF1)	DO-214BA (GF1)	DO-214BA (GF1)
Reverse Recovery Time (trr)	2 µs	2 µs	2 µs	2 µs
Speed	Standard Recovery >500ns, > 200mA (Io)	Standard Recovery >500ns, > 200mA (Io)	Standard Recovery >500ns, > 200mA (Io)	Standard Recovery >500ns, > 200mA (Io)
Base Product Number	GF1	GF1	GF1	GF1

## GF1A-E3/67A Datasheet PDF

Download GF1A-E3/67A pdf datasheets and Vishay General Semiconductor - Diodes Division documentation for GF1A-E3/67A - Vishay General Semiconductor - Diodes Division.

### Other Related Documents

[Packaging Information.pdf](#)

### PCN Assembly/Origin

[Mult Dev Mfg Site Chg 16/Aug/2019.pdf](#)

## Customers Also Interested in

### Recommended Products

<b>GF1B/17</b>	<b>GF1B-E3/67A</b>	<b>GF1D/17</b>	<b>GF1B/17A</b>	<b>GF119-774-A1</b>	<b>GF1A-E3/67</b>
Electro-Films (EFI) / Vishay	Vishay General Semiconductor - Diodes Division DIODE GEN PURP 100V 1A DO214BA	GS	Vishay General Semiconductor - Diodes Division DIODE GEN PURP 100V 1A DO214BA	NVIDIA	Electro-Films (EFI) / Vishay



**GF19NC60KD**  
STMicroelectronics



**GF12P10SB202K**  
TOCOS



**GF1A-NL**  
Fairchild (onsemi)



**GF1D-E3/67A**  
Vishay General Semiconductor -  
Diodes Division  
DIODE GEN PURP 200V 1A DO214BA



**GF1B-E3/5CA**  
Vishay General Semiconductor -  
Diodes Division  
DIODE GEN PURP 100V 1A DO214BA



**GF1D-E3/5CA**  
Electro-Films (EFI) / Vishay



**GF128A**  
GOODIX



**GF1A\_NL**  
Fairchild (onsemi)



**GF114-200-KB-A1**  
NVIDIA



**GF117-633-A2**  
NVIDIA



**GF1D-2**  
GS



**GF117-730-A2**  
NVIDIA

## Shipment

### Delivery Time

In-stock items can be shipped within 24 hours. Some parts will be arranged for delivery within 1-2 days from the date all items arrive at our warehouse. And Allelco ships order once a day at about 17:00, except Sunday. Once the goods are shipped, the estimated delivery time depends on the shipping methods and Delivery destination. The table below shows are the logistic time for some common countries.

### Delivery Cost

- > Use your express account for shipment if you have one.
- > Use our account for the shipment. Refer to the table below for the approximate charges.  
(Different time frame / countries / package size has different price.)

### Delivery Method

- > Global Common Shipment by DHL / UPS / FedEx / TNT / EMS / SF we support.
- > Others more shipping ways, please get in touch with your customer manager.

Common Countries Logistic Time Reference		
Region	Country	Logistic Time(Day)
America	United States	5
	Brazil	7
Europe	Germany	5
	United Kingdom	4
	Italy	5
Oceania	Australia	6
	New Zealand	7
Asia	India	6
	Japan	7
Middle East	Israel	6

DHL & FedEx Shipment Charges Reference	
Shipment charges(KG)	Reference DHL(USD\$)
0.00kg-1.00kg	USD\$60.00
1.00kg-2.00kg	USD\$70.00
2.00kg-3.00kg	USD\$80.00

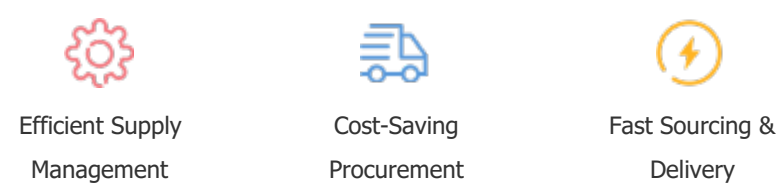
Note: The above table is for reference only. There may have some data bias for the uncontrollable factors.  
Contact us if you have any questions.

### Payment Support

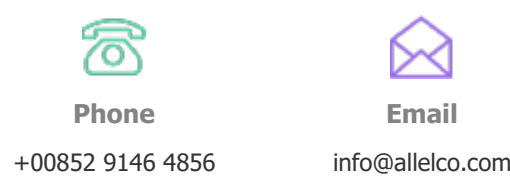
The payment method can be chosen from the methods shown below:  
Wire Transfer (T/T, Bank Transfer), Western Union, Credit card,  
PayPal.



### Your Faithful Supply Chain Partner -



Contact us if you have any questions.



### Certifications & Memberships



[View More](#)



### Contact us

Address: Flat/Rm C 13/F Harvard Commercial Building 105-111 Thomson Road, Wan Chai, Hong Kong  
Phone: +00852 9146 4856  
Fax: +00852 3010 8510  
Email: info@allelco.com