



Image may be representation.  
See specifications for product details.



## MAX358EWE+

Manufacturer Part Number	<b>MAX358EWE+</b>
Manufacturer	<b>Maxim Integrated</b>
Allelco Part Number	32D-MAX358EWE+
ECAD Model	Request Free CAD Models
Parts Description	IC MUX 8:1 1.8KOHM 16SOIC
Package	16-SOIC (0.295", 7.50mm Width)
Data sheet	<b>MAX358-59, HI-508A-09A.pdf</b>
RoHs Status	<b>ROHS3 Compliant</b>

**Get a Quote**

MAX358EWE+ - Analog Devices Inc./Maxim Integrated.New Original in Stock. Download Linear Technology MAX358EWE+ datasheet/specifications on AllelcoElec.com.  
Request a quote for MAX358EWE+, please send us email: [info@allelco.com](mailto:info@allelco.com)

## Specifications

MAX358EWE+ Tech Specifications

MAX358EWE+ - Analog Devices Inc./Maxim Integrated technical specifications, attributes, parameters

Product Attribute	Attribute Value	Product Attribute	Attribute Value
Manufacturer	Maxim Integrated	Number of Circuits	1
Voltage - Supply, Single (V+)	-	Multiplexer/Demultiplexer Circuit	8:1
Voltage - Supply, Dual (V±)	±4.5V ~ 18V	Mounting Type	Surface Mount
Switch Time (Ton, Toff) (Max)	300ns, 300ns (Typ)	Current - Leakage (IS(off)) (Max)	10µA
Switch Circuit	-	Crosstalk	-
Supplier Device Package	16-SOIC	Charge Injection	-
Series	-	Channel-to-Channel Matching (ΔRon)	-
Package / Case	16-SOIC (0.295", 7.50mm Width)	Channel Capacitance (CS(off), CD(off))	5pF, 25pF
Package	Tube	Base Product Number	MAX358
Operating Temperature	-40°C ~ 85°C (TA)	-3db Bandwidth	-
On-State Resistance (Max)	1.8kOhm		

## Parts with Similar Specifications

The three parts on the right have similar specifications to Analog Devices Inc./Maxim Integrated MAX358EWE+

Product Attribute				
Part Number	MAX358EWE+	MAX359CWE+T	MAX358EPE	MAX359CWE+
Manufacturer	Analog Devices Inc./Maxim Integrated	Analog Devices Inc./Maxim Integrated	Analog Devices Inc./Maxim Integrated	Analog Devices Inc./Maxim Integrated
Crosstalk	-	-	-	-
Multiplexer/Demultiplexer Circuit	8:1	4:1	8:1	4:1
Base Product Number	MAX358	MAX359	MAX358	MAX359
Number of Circuits	1	2	1	2
Switch Time (Ton, Toff) (Max)	300ns, 300ns (Typ)	300ns, 300ns (Typ)	300ns, 300ns (Typ)	300ns, 300ns (Typ)
Mounting Type	Surface Mount	Surface Mount	Through Hole	Surface Mount
Package	Tube	Tape & Reel (TR)	Tube	Tube
Charge Injection	-	-	-	-
Channel-to-Channel Matching (ΔRon)	-	-	-	-
Current - Leakage (IS(off)) (Max)	10µA	10µA	10µA	10µA
Voltage - Supply, Dual (V±)	±4.5V ~ 18V	±4.5V ~ 18V	±4.5V ~ 18V	±4.5V ~ 18V
Voltage - Supply, Single (V+)	-	-	-	-
Series	-	-	-	-
Operating Temperature	-40°C ~ 85°C (TA)	0°C ~ 75°C (TA)	-40°C ~ 85°C (TA)	0°C ~ 75°C (TA)
Supplier Device Package	16-SOIC	16-SOIC	16-PDIP	16-SOIC
Switch Circuit	-	SP4T	-	SP4T
Channel Capacitance (CS(off), CD(off))	5pF, 25pF	-	5pF, 25pF	-
Package / Case	16-SOIC (0.295", 7.50mm Width)	16-SOIC (0.295", 7.50mm Width)	16-DIP (0.300", 7.62mm)	16-SOIC (0.295", 7.50mm Width)
On-State Resistance (Max)	1.8kOhm	1.8kOhm	1.8kOhm	1.8kOhm
-3db Bandwidth	-	-	-	-

## MAX358EWE+ Datasheet PDF

Download MAX358EWE+ pdf datasheets and Analog Devices Inc./Maxim Integrated documentation for MAX358EWE+ - Analog Devices Inc./Maxim Integrated.

### Datasheets

MAX358-59, HI-508A-09A.pdf

### Environmental Information

Maxim Integrated REACH.pdf

Maxim Integrated RoHS Cert.pdf

 Part Numbering System.pdf

## Customers Also Interested in

### Recommended Products



#### MAX359CWE+T

Analog Devices Inc./Maxim Integrated  
IC SWITCH SP4TX2 1.8KOHM 16SOIC



#### MAX358EPE

Analog Devices Inc./Maxim Integrated  
IC MUX 8:1 1.8KOHM 16DIP



#### MAX359CWE+

Analog Devices Inc./Maxim Integrated  
IC SWITCH SP4TX2 1.8KOHM 16SOIC



#### MAX358CPE

Analog Devices Inc./Maxim Integrated  
IC MUX 8:1 1.8KOHM 16DIP



#### MAX359CWE

Analog Devices Inc./Maxim Integrated  
IC SWITCH SP4TX2 1.8KOHM 16SOIC

#### MAX358MJE

Analog Devices Inc./Maxim Integrated  
IC MUX 8:1 1.5KOHM 16CERDIP



#### MAX358MJE/883B

Analog Devices Inc./Maxim Integrated  
IC MUX 8:1 1.8KOHM 16CDIP



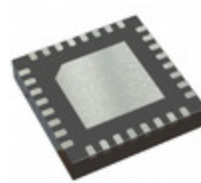
#### MAX358EPE+

Analog Devices Inc./Maxim Integrated  
IC MUX ANLG FAULT PROTECT 16-DIP



#### MAX358CWE+

Analog Devices Inc./Maxim Integrated  
IC MUX 8:1 1.8KOHM 16SOIC



#### MAX3580ETJ+T

Analog Devices Inc./Maxim Integrated  
IC VID DIR CONV TV TUNER 32TQFN



#### MAX358EWE+T

Analog Devices Inc./Maxim Integrated  
IC MUX 8:1 1.8KOHM 16SOIC



#### MAX358CPE+

Analog Devices Inc./Maxim Integrated  
IC MUX 8:1 1.8KOHM 16DIP



#### MAX359CPE

Analog Devices Inc./Maxim Integrated  
IC SWITCH SP4T X 2 1.8KOHM 16DIP



#### MAX359CPE+

Analog Devices Inc./Maxim Integrated  
IC SWITCH SP4T X 2 1.8KOHM 16DIP



#### MAX358EWE

Analog Devices Inc./Maxim Integrated  
IC MUX 8:1 1.8KOHM 16SOIC



#### MAX359EJE

Analog Devices Inc./Maxim Integrated  
IC SWITCH SP4TX2 1.8KOHM 16CDIP



#### MAX358CWE

Analog Devices Inc./Maxim Integrated  
IC MUX 8:1 1.8KOHM 16SOIC



#### MAX358CWE+T

Analog Devices Inc./Maxim Integrated  
IC MUX 8:1 1.8KOHM 16SOIC

## Shipment

### Delivery Time

In-stock items can be shipped within 24 hours. Some parts will be arranged for delivery within 1-2 days from the date all items arrive at our warehouse. And Allelco ships order once a day at about 17:00, except Sunday. Once the goods are shipped, the estimated delivery time depends on the shipping methods and Delivery destination. The table below shows are the logistic time for some common countries.

### Delivery Cost

- > Use your express account for shipment if you have one.
  - > Use our account for the shipment. Refer to the table below for the approximate charges.
- (Different time frame / countries / package size has different price.)

### Delivery Method

- > Global Common Shipment by DHL / UPS / FedEx / TNT / EMS / SF we support.
- > Others more shipping ways, please get in touch with your customer manager.

Common Countries Logistic Time Reference

Region	Country	Logistic Time(Day)
America	United States	5
	Brazil	7
Europe	Germany	5
	United Kingdom	4
	Italy	5
Oceania	Australia	6
	New Zealand	7
Asia	India	6
	Japan	7
Middle East	Israel	6

DHL & FedEx Shipment Charges Reference

Shipment charges(KG)	Reference DHL(USD\$)
0.00kg-1.00kg	USD\$60.00
1.00kg-2.00kg	USD\$70.00
2.00kg-3.00kg	USD\$80.00

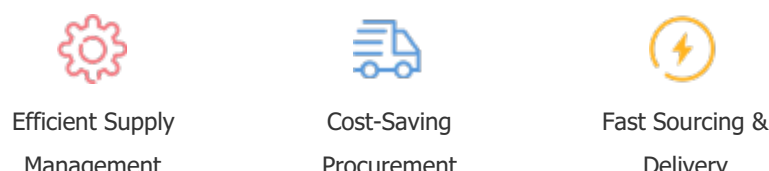
Note: The above table is for reference only. There may have some data bias for the uncontrollable factors.  
Contact us if you have any questions.

### Payment Support

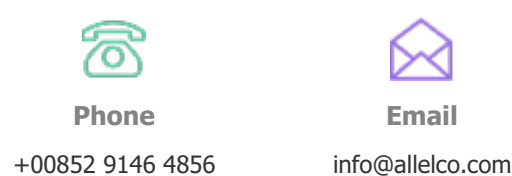
The payment method can be chosen from the methods shown below:  
Wire Transfer (T/T, Bank Transfer), Western Union, Credit card, PayPal.



### Your Faithful Supply Chain Partner -



Contact us if you have any questions.



### Certifications & Memberships



View More

### Contact us

Address: Flat/Rm C 13/F Harvard Commercial Building 105-111 Thomson Road, Wan Chai, Hong Kong  
Phone: +00852 9146 4856  
Fax: +00852 3010 8510  
Email: info@Allelco.com