



Image may be representation.
See specifications for product details.



IPD30N06S2-15

Manufacturer Part Number	IPD30N06S2-15
Manufacturer	Infineon Technologies
Allelco Part Number	32D-IPD30N06S2-15
ECAD Model	Request Free CAD Models
Parts Description	MOSFET N-CH 55V 30A TO252-3
Package	TO-252-3, DPak (2 Leads + Tab), SC-63
Data sheet	IPD30N06S2-15.pdf
RoHs Status	ROHS3 Compliant

Get a Quote

IPD30N06S2-15 - Infineon Technologies. New Original in Stock. Download Linear Technology IPD30N06S2-15 datasheet/specifications on AllelcoElec.com. Request a quote for IPD30N06S2-15, please send us email: info@allelco.com

Specifications

IPD30N06S2-15 Tech Specifications

IPD30N06S2-15 - Infineon Technologies technical specifications, attributes, parameters

Product Attribute	Attribute Value	Product Attribute	Attribute Value
Manufacturer	Infineon Technologies	Operating Temperature	-55°C ~ 175°C (TJ)
Vgs(th) (Max) @ Id	4V @ 80µA	Mounting Type	Surface Mount
Vgs (Max)	±20V	Input Capacitance (Ciss) (Max) @ Vds	1485 pF @ 25 V
Technology	MOSFET (Metal Oxide)	Gate Charge (Qg) (Max) @ Vgs	110 nC @ 10 V
Supplier Device Package	PG-TO252-3-11	FET Type	N-Channel
Series	OptiMOS™	FET Feature	-
Rds On (Max) @ Id, Vgs	14.7mOhm @ 30A, 10V	Drive Voltage (Max Rds On, Min Rds On)	10V
Power Dissipation (Max)	136W (Tc)	Drain to Source Voltage (Vdss)	55 V
Package / Case	TO-252-3, DPak (2 Leads + Tab), SC-63	Current - Continuous Drain (Id) @ 25°C	30A (Tc)
Package	Tape & Reel (TR)	Base Product Number	IPD30N

Parts with Similar Specifications

The three parts on the right have similar specifications to Infineon Technologies IPD30N06S2-15

Product Attribute				
Part Number	IPD30N06S2-15	IPD30N06S2L13ATMA4	IPD30N06S2L-13	IPD30N03S4L14ATMA1
Manufacturer	Infineon Technologies	Infineon Technologies	Infineon Technologies	Infineon Technologies
Drain to Source Voltage (Vdss)	55 V	55 V	55 V	30 V
Technology	MOSFET (Metal Oxide)	MOSFET (Metal Oxide)	MOSFET (Metal Oxide)	MOSFET (Metal Oxide)
Current - Continuous Drain (Id) @ 25°C	30A (Tc)	30A (Tc)	30A (Tc)	30A (Tc)
Gate Charge (Qg) (Max) @ Vgs	110 nC @ 10 V	69 nC @ 10 V	69 nC @ 10 V	14 nC @ 10 V
Base Product Number	IPD30N	IPD30N06	IPD30N	IPD30N03
Mounting Type	Surface Mount	Surface Mount	Surface Mount	Surface Mount
Supplier Device Package	PG-TO252-3-11	PG-TO252-3-11	PG-TO252-3-11	PG-TO252-3-11
Drive Voltage (Max Rds On, Min Rds On)	10V	4.5V, 10V	4.5V, 10V	4.5V, 10V
FET Feature	-	-	-	-
Package	Tape & Reel (TR)	Tape & Reel (TR)	Tape & Reel (TR)	Tape & Reel (TR)
Series	OptiMOS™	OptiMOS™	OptiMOS™	OptiMOS™
Operating Temperature	-55°C ~ 175°C (TJ)	-55°C ~ 175°C (TJ)	-55°C ~ 175°C (TJ)	-55°C ~ 175°C (TJ)
Rds On (Max) @ Id, Vgs	14.7mOhm @ 30A, 10V	13mOhm @ 30A, 10V	13mOhm @ 30A, 10V	13.6mOhm @ 30A, 10V
Package / Case	TO-252-3, DPak (2 Leads + Tab), SC-63	TO-252-3, DPak (2 Leads + Tab), SC-63	TO-252-3, DPak (2 Leads + Tab), SC-63	TO-252-3, DPak (2 Leads + Tab), SC-63
Input Capacitance (Ciss) (Max) @ Vds	1485 pF @ 25 V	1800 pF @ 25 V	1800 pF @ 25 V	980 pF @ 25 V
FET Type	N-Channel	N-Channel	N-Channel	N-Channel
Vgs(th) (Max) @ Id	4V @ 80µA	2V @ 80µA	2V @ 80µA	2.2V @ 10µA
Power Dissipation (Max)	136W (Tc)	136W (Tc)	136W (Tc)	31W (Tc)
Vgs (Max)	±20V	±20V	±20V	±16V

IPD30N06S2-15 Datasheet PDF

Download IPD30N06S2-15 pdf datasheets and Infineon Technologies documentation for IPD30N06S2-15 - Infineon Technologies.

Other Related Documents

[Part Number Guide.pdf](#)

PCN Packaging

[Cover Tape Width Update 17/Jun/2015.pdf](#)

[Cover Tape Width Cancellation 14/Jul/2015.pdf](#)

PCN Assembly/Origin



Customers Also Interested in

Recommended Products

IPD30N03S4L-14 MOS Cypress Semiconductor (Infineon Technologies)	IPD30N06S2L13ATMA4 Infineon Technologies MOSFET N-CH 55V 30A TO252-31	IPD30N06 INFIN	IPD30N03S4L-14 Cypress Semiconductor (Infineon Technologies)	IPD30N06S2L-13 Infineon Technologies MOSFET N-CH 55V 30A TO252-3	IPD30N06S2-23 Cypress Semiconductor (Infineon Technologies)
IPD30N03S2L-10/2N03L10 Cypress Semiconductor (Infineon Technologies)	IPD30N06S2-15 MOS Cypress Semiconductor (Infineon Technologies)	IPD30N03S2L-20 MOS Cypress Semiconductor (Infineon Technologies)	IPD30N06S2L-13 MOS Cypress Semiconductor (Infineon Technologies)	IPD30N03S4L14ATMA1 Infineon Technologies MOSFET N-CH 30V 30A TO252-3	IPD30N06S2L-23 Infineon Technologies IPD30N06 - 55V-60V N-CHANNEL AUT
IPD30N06S2L23ATMA3 Infineon Technologies MOSFET N-CH 55V 30A TO252-31	IPD30N03S4L-09 Cypress Semiconductor (Infineon Technologies)	IPD30N03S2L-10 Cypress Semiconductor (Infineon Technologies)	IPD30N06S3-24 Infineon Technologies N-CHANNEL POWER MOSFET	IPD30N06S2-23 MOS Cypress Semiconductor (Infineon Technologies)	IPD30N03S2L-20 Cypress Semiconductor (Infineon Technologies)

Shipment

Delivery Time

In-stock items can be shipped within 24 hours. Some parts will be arranged for delivery within 1-2 days from the date all items arrive at our warehouse. And Allelco ships order once a day at about 17:00, except Sunday. Once the goods are shipped, the estimated delivery time depends on the shipping methods and Delivery destination. The table below shows are the logistic time for some common countries.

Delivery Cost

- > Use your express account for shipment if you have one.
 - > Use our account for the shipment. Refer to the table below for the approximate charges.
- (Different time frame / countries / package size has different price.)

Delivery Method

- > Global Common Shipment by DHL / UPS / FedEx / TNT / EMS / SF we support.
- > Others more shipping ways, please get in touch with your customer manager.

Common Countries Logistic Time Reference		
Region	Country	Logistic Time(Day)
America	United States	5
	Brazil	7
Europe	Germany	5
	United Kingdom	4
	Italy	5
Oceania	Australia	6
	New Zealand	7
Asia	India	6
	Japan	7
Middle East	Israel	6

DHL & FedEx Shipment Charges Reference	
Shipment charges(KG)	Reference DHL(USD\$)
0.00kg-1.00kg	USD\$60.00
1.00kg-2.00kg	USD\$70.00
2.00kg-3.00kg	USD\$80.00

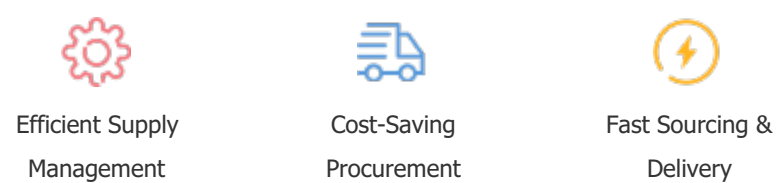
Note: The above table is for reference only. There may have some data bias for the uncontrollable factors.
Contact us if you have any questions.

Payment Support

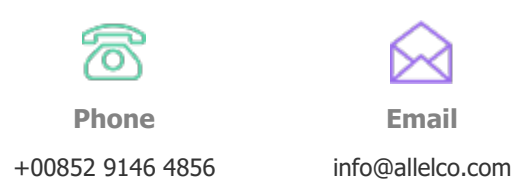
The payment method can be chosen from the methods shown below:
Wire Transfer (T/T, Bank Transfer), Western Union, Credit card,
PayPal.



Your Faithful Supply Chain Partner -



Contact us if you have any questions.



Certifications & Memberships



[View More](#)