

Image may be representation.
See specifications for product details.



EP3SE110F1152C2N

Manufacturer Part Number **EP3SE110F1152C2N**

Manufacturer **Intel**

Allelco Part Number **32D-EP3SE110F1152C2N**

ECAD Model Request Free CAD Models

Parts Description **IC FPGA 744 I/O 1152FBGA**

Package **1152-BBGA, FCBGA**

Data sheet **[Virtual JTAG Megafuntion Guide.pdf](#)**

[Stratix III Device Family Overview.pdf](#)

[Stratix III Device Handbook Vol 2.pdf](#)

[Stratix III Device Handbook.pdf](#)

RoHS Status **RoHS Compliant**

Get a Quote

EP3SE110F1152C2N - Intel.New Original in Stock. Download Linear Technology EP3SE110F1152C2N datasheet/specifications on AllelcoElec.com.

Request a quote for EP3SE110F1152C2N, please send us email: info@allelco.com

Specifications

EP3SE110F1152C2N Tech Specifications

EP3SE110F1152C2N - Intel technical specifications, attributes, parameters

Product Attribute	Attribute Value	Product Attribute	Attribute Value
Manufacturer	Intel	Operating Temperature	0°C ~ 85°C (TJ)
Voltage - Supply	0.86V ~ 1.15V	Number of Logic Elements/Cells	107500
Total RAM Bits	8936448	Number of LABs/CLBs	4300
Supplier Device Package	1152-FBGA (35x35)	Number of I/O	744
Series	Stratix® III E	Mounting Type	Surface Mount
Package / Case	1152-BBGA, FCBGA	Base Product Number	EP3SE110
Package	Tray		

Parts with Similar Specifications

The three parts on the right have similar specifications to Intel EP3SE110F1152C2N

Product Attribute				
Part Number	EP3SE110F1152C2N	EP3SE110F1152I3N	EP3SE110F1152I4G	EP3CLS150F780C8N
Manufacturer	Intel	Intel	Intel	Intel
Mounting Type	Surface Mount	Surface Mount	-	Surface Mount
Series	Stratix® III E	Stratix® III E	*	Cyclone® III
Number of LABs/CLBs	4300	4300	-	9428
Number of Logic Elements/Cells	107500	107500	-	150848
Total RAM Bits	8936448	8936448	-	6137856
Operating Temperature	0°C ~ 85°C (TJ)	-40°C ~ 100°C (TJ)	-	0°C ~ 85°C (TJ)
Voltage - Supply	0.86V ~ 1.15V	0.86V ~ 1.15V	-	1.15V ~ 1.25V
Supplier Device Package	1152-FBGA (35x35)	1152-FBGA (35x35)	-	780-FBGA (29x29)
Package / Case	1152-BBGA, FCBGA	1152-BBGA, FCBGA	-	780-BGA
Number of I/O	744	744	-	413
Package	Tray	Tray	Tray	Tray
Base Product Number	EP3SE110	EP3SE110	EP3SE110	EP3CLS150

EP3SE110F1152C2N Datasheet PDF

Download EP3SE110F1152C2N pdf datasheets and Intel documentation for EP3SE110F1152C2N - Intel.

Datasheets

[Virtual JTAG Megafuntion Guide.pdf](#)

[Stratix III Device Family Overview.pdf](#)

[Stratix III Device Handbook Vol 2.pdf](#)

[Stratix III Device Handbook.pdf](#)

PCN Design/Specification

[Mult Series Software Chgs 26/Mar/2020.pdf](#)

PCN Packaging

[Mult Dev Label CHG 24/Jan/2020.pdf](#)

[Mult Dev Label Chgs 24/Feb/2020.pdf](#)

PCN Obsolescence/ EOL

[Mult Dev Add Subs 6/Sep/2019.pdf](#)

[Mult Dev EOL 30/Mar/2020.pdf](#)

[Mult Dev EOL Rev 30/Mar/2020.pdf](#)

PCN Other



Customers Also Interested in

Recommended Products



EP3SE110F1152I3N
Intel
IC FPGA 744 I/O 1152FBGA



EP3SE110F1152I4G
Intel
IC FPGA 744 I/O 1152FBGA



EP3CLS150F780C8N
Intel
IC FPGA 413 I/O 780FBGA



EP3SE110F1152C4G
Intel
IC FPGA 744 I/O 1152FBGA



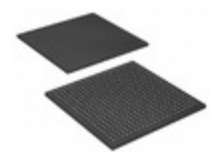
EP3SE110F1152C2G
Intel
IC FPGA 744 I/O 1152FBGA



EP3SE110F1152I3G
Intel
IC FPGA 744 I/O 1152FBGA



EP3SE110F1152C3G
Intel
IC FPGA 744 I/O 1152FBGA



EP3C80U484I7N
Intel
IC FPGA 295 I/O 484UBGA



EP3C80U484I6
Altera (Intel)



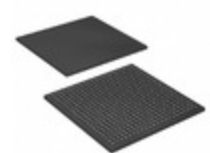
EP3SE110F1152I2N



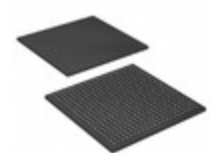
EP3CLS200F780I7N
Intel
IC FPGA 413 I/O 780FBGA



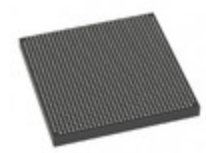
EP3SE110F1152
Altera (Intel)



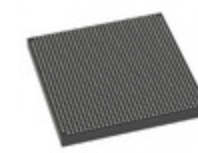
EP3C80U484C6N
Intel
IC FPGA 295 I/O 484UBGA



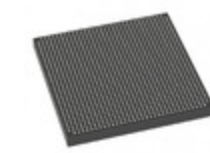
EP3CLS200F484I7N
Intel
IC FPGA 210 I/O 484FBGA



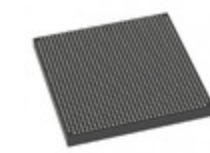
EP3SE110F1152C4N
Intel
IC FPGA 744 I/O 1152FBGA



EP3SE110F1152C4LN
Intel
IC FPGA 744 I/O 1152FBGA



EP3SE110F1152C3N
Intel
IC FPGA 744 I/O 1152FBGA



EP3SE110F1152I4
Intel
IC FPGA 744 I/O 1152FBGA

Shipment

Delivery Time

In-stock items can be shipped within 24 hours. Some parts will be arranged for delivery within 1-2 days from the date all items arrive at our warehouse. And Allelco ships order once a day at about 17:00, except Sunday. Once the goods are shipped, the estimated delivery time depends on the shipping methods and Delivery destination. The table below shows are the logistic time for some common countries.

Delivery Cost

- > Use your express account for shipment if you have one.
 - > Use our account for the shipment. Refer to the table below for the approximate charges.
- (Different time frame / countries / package size has different price.)

Delivery Method

- > Global Common Shipment by DHL / UPS / FedEx / TNT / EMS / SF we support.
- > Others more shipping ways, please get in touch with your customer manager.

Common Countries Logistic Time Reference

Region	Country	Logistic Time(Day)
America	United States	5
	Brazil	7
Europe	Germany	5
	United Kingdom	4
	Italy	5
Oceania	Australia	6
	New Zealand	7
Asia	India	6
	Japan	7
Middle East	Israel	6

DHL & FedEx Shipment Charges Reference

Shipment charges(KG)	Reference DHL(USD\$)
0.00kg-1.00kg	USD\$60.00
1.00kg-2.00kg	USD\$70.00
2.00kg-3.00kg	USD\$80.00

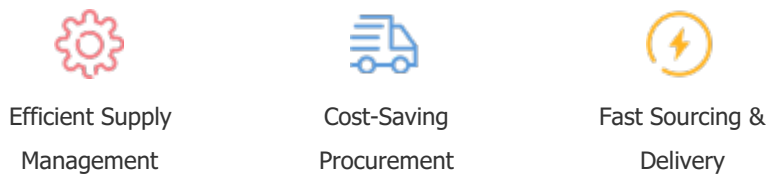
Note: The above table is for reference only. There may have some data bias for the uncontrollable factors. Contact us if you have any questions.

Payment Support

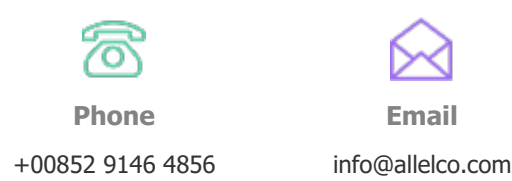
The payment method can be chosen from the methods shown below:
Wire Transfer (T/T, Bank Transfer), Western Union, Credit card, PayPal.



Your Faithful Supply Chain Partner -



Contact us if you have any questions.



Certifications & Memberships



[View More](#)

Contact us

Address: Flat/Rm C 13/F Harvard Commercial Building 105-111 Thomson Road, Wan Chai, Hong Kong
Phone: +00852 9146 4856
Fax: +00852 3010 8510
Email: info@Allelco.com