



Image may be representation.  
See specifications for product details.



## EPF81188ARC240-3

|                          |                         |
|--------------------------|-------------------------|
| Manufacturer Part Number | <b>EPF81188ARC240-3</b> |
| Manufacturer             | <b>Intel</b>            |
| Allelco Part Number      | 32D-EPF81188ARC240-3    |
| ECAD Model               | Request Free CAD Models |
| Parts Description        | IC FPGA 184 I/O 240RQFP |
| Package                  | 240-BFQFP Exposed Pad   |
| Data sheet               | <b>FLEX 8000.pdf</b>    |

**Get a Quote**

EPF81188ARC240-3 - Intel.New Original in Stock. Download Linear Technology EPF81188ARC240-3 datasheet/specifications on AllelcoElec.com.  
Request a quote for EPF81188ARC240-3, please send us email: [info@allelco.com](mailto:info@allelco.com)

### Specifications

EPF81188ARC240-3 Tech Specifications  
EPF81188ARC240-3 - Intel technical specifications, attributes, parameters

| Product Attribute       | Attribute Value       | Product Attribute              | Attribute Value |
|-------------------------|-----------------------|--------------------------------|-----------------|
| Manufacturer            | Intel                 | Number of Logic Elements/Cells | 1008            |
| Voltage - Supply        | 4.75V ~ 5.25V         | Number of LABs/CLBs            | 126             |
| Supplier Device Package | 240-RQFP (32x32)      | Number of I/O                  | 184             |
| Series                  | FLEX 8000             | Number of Gates                | 12000           |
| Package / Case          | 240-BFQFP Exposed Pad | Mounting Type                  | Surface Mount   |
| Package                 | Tray                  | Base Product Number            | EPF81188        |
| Operating Temperature   | 0°C ~ 70°C (TA)       |                                |                 |

### Parts with Similar Specifications

The three parts on the right have similar specifications to Intel EPF81188ARC240-3

| Product Attribute              |                       |                         |                         |                         |
|--------------------------------|-----------------------|-------------------------|-------------------------|-------------------------|
| Part Number                    | EPF81188ARC240-3      | <b>EPF81188ARC240-3</b> | <b>EPF81188ARC240-2</b> | <b>EPF81188AQI208-4</b> |
| Manufacturer                   | Intel                 | Altera                  | Altera                  | Intel                   |
| Number of Gates                | 12000                 | 12000                   | 12000                   | 12000                   |
| Series                         | FLEX 8000             | FLEX 8000               | FLEX 8000               | FLEX 8000               |
| Mounting Type                  | Surface Mount         | Surface Mount           | Surface Mount           | Surface Mount           |
| Number of I/O                  | 184                   | 184                     | 184                     | 148                     |
| Number of Logic Elements/Cells | 1008                  | 1008                    | 1008                    | 1008                    |
| Supplier Device Package        | 240-RQFP (32x32)      | 240-RQFP (32x32)        | 240-RQFP (32x32)        | 208-PQFP (28x28)        |
| Number of LABs/CLBs            | 126                   | 126                     | 126                     | 126                     |
| Package                        | Tray                  | Tray                    | Tray                    | Tray                    |
| Voltage - Supply               | 4.75V ~ 5.25V         | 4.75V ~ 5.25V           | 4.75V ~ 5.25V           | 4.75V ~ 5.25V           |
| Base Product Number            | EPF81188              | -                       | -                       | EPF81188                |
| Package / Case                 | 240-BFQFP Exposed Pad | 240-BFQFP               | 240-BFQFP               | 208-BFQFP               |
| Operating Temperature          | 0°C ~ 70°C (TA)       | 0°C ~ 70°C (TA)         | 0°C ~ 70°C (TA)         | -40°C ~ 85°C (TA)       |

### EPF81188ARC240-3 Datasheet PDF

Download EPF81188ARC240-3 pdf datasheets and Intel documentation for EPF81188ARC240-3 - Intel.

#### Datasheets

[FLEX 8000.pdf](#)

#### PCN Packaging

[All Dev Pkg Chg 1/Aug/2018.pdf](#)

#### PCN Obsolescence/ EOL

[Multiple Devices 26/Feb/2007.pdf](#)

### Customers Also Interested in

#### Recommended Products



**EPF81188ARC240-3**  
Altera  
IC FPGA 184 I/O 240RQFP



**EPF81188ARC240-2**  
Altera  
IC FPGA 184 I/O 240RQFP



**EPF81188AQI208-4**  
Intel  
IC FPGA 148 I/O 208QFP



**EPF81188AQC240-2**  
Intel  
IC FPGA 184 I/O 240QFP



**EPF81188AQC240-3**  
Intel  
IC FPGA 184 I/O 240QFP



**EPF8130S**  
PCA Electronics, Inc.



**EPF81188AQC208-4N**

Altera (Intel)



**EPF81188RC240-2**

Altera (Intel)



**EPF81188AQC240-3**

Altera  
IC FPGA 184 I/O 240QFP



**EPF81188GC232-2**

Altera (Intel)



**EPF81188ARC240-5**

Altera (Intel)



**EPF81188ARC240-4**

Altera  
IC FPGA 184 I/O 240RQFP



**EPF81188ARC240-2**

Intel  
IC FPGA 184 I/O 240RQFP



**EPF81188AQC240-4**

Intel  
IC FPGA 184 I/O 240QFP



**EPF81188AQI208-3**

Altera (Intel)



**EPF81188ARI240-4**

Intel  
IC FPGA 184 I/O 240RQFP



**EPF81188ARC240-4**

Intel  
IC FPGA 184 I/O 240RQFP



**EPF81188ARC240-6**

Altera (Intel)

## Shipment

### Delivery Time

In-stock items can be shipped within 24 hours. Some parts will be arranged for delivery within 1-2 days from the date all items arrive at our warehouse. And Allelco ships order once a day at about 17:00, except Sunday. Once the goods are shipped, the estimated delivery time depends on the shipping methods and Delivery destination. The table below shows are the logistic time for some common countries.

### Delivery Cost

> Use your express account for shipment if you have one.

> Use our account for the shipment. Refer to the table below for the approximate charges.

(Different time frame / countries / package size has different price.)

### Delivery Method

> Global Common Shipment by DHL / UPS / FedEx / TNT / EMS / SF we support.

> Others more shipping ways, please get in touch with your customer manager.

| Common Countries Logistic Time Reference |                |                    |
|--|----------------|--------------------|
| Region                                   | Country        | Logistic Time(Day) |
| America                                  | United States  | 5                  |
|  | Brazil         | 7                  |
| Europe                                   | Germany        | 5                  |
|  | United Kingdom | 4                  |
|  | Italy          | 5                  |
| Oceania                                  | Australia      | 6                  |
|  | New Zealand    | 7                  |
| Asia                                     | India          | 6                  |
|  | Japan          | 7                  |
| Middle East                              | Israel         | 6                  |

| DHL & FedEx Shipment Charges Reference |                      |
|--|----------------------|
| Shipment charges(KG)                   | Reference DHL(USD\$) |
| 0.00kg-1.00kg                          | USD\$60.00           |
| 1.00kg-2.00kg                          | USD\$70.00           |
| 2.00kg-3.00kg                          | USD\$80.00           |

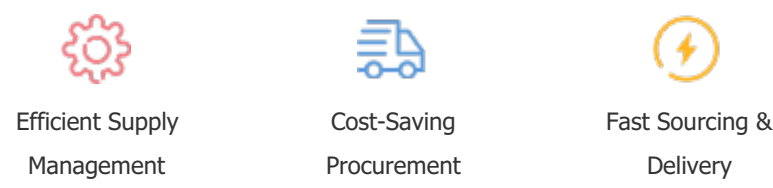
Note: The above table is for reference only. There may have some data bias for the uncontrollable factors.  
Contact us if you have any questions.

## Payment Support

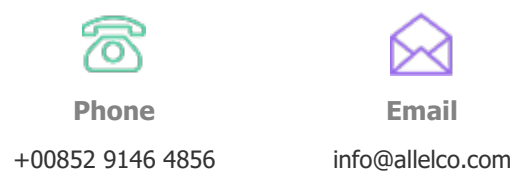
The payment method can be chosen from the methods shown below:  
Wire Transfer (T/T, Bank Transfer), Western Union, Credit card, PayPal.



## Your Faithful Supply Chain Partner -



Contact us if you have any questions.



## Certifications & Memberships



[View More](#)



## Contact us

Address: Flat/Rm C 13/F Harvard Commercial Building 105-111 Thomson Road, Wan Chai, Hong Kong

Phone: +00852 9146 4856

Fax: +00852 3010 8510

Email: info@allelco.com

Copyright © 2012-2023 AllelcoElec.com. All rights reserved.