



Image may be representation.  
See specifications for product details.



## ADM706AR

Manufacturer Part Number	<b>ADM706AR</b>
Manufacturer	<b>Analog Devices, Inc.</b>
Allelco Part Number	32D-ADM706AR
ECAD Model	Request Free CAD Models
Parts Description	IC SUPERVISOR 1 CHANNEL 8SOIC
Package	8-SOIC (0.154", 3.90mm Width)
Data sheet	<b>Cylindrical Battery Holders.pdf</b>

**Get a Quote**

ADM706AR - Analog Devices Inc..New Original in Stock. Download Linear Technology ADM706AR datasheet/specifications on AllelcoElec.com.  
Request a quote for ADM706AR, please send us email: [info@allelco.com](mailto:info@allelco.com)

### Specifications

ADM706AR Tech Specifications  
ADM706AR - Analog Devices Inc. technical specifications, attributes, parameters

Product Attribute	Attribute Value	Product Attribute	Attribute Value
Manufacturer	Analog Devices, Inc.	Package / Case	8-SOIC (0.154", 3.90mm Width)
Voltage - Threshold	4.4V	Package	Tube
Type	Simple Reset/Power-On Reset	Output	Push-Pull, Totem Pole
Supplier Device Package	8-SOIC	Operating Temperature	-40°C ~ 85°C (TA)
Series	-	Number of Voltages Monitored	1
Reset Timeout	160ms Minimum	Mounting Type	Surface Mount
Reset	Active Low	Base Product Number	ADM706

### Parts with Similar Specifications

The three parts on the right have similar specifications to Analog Devices Inc. ADM706AR

Product Attribute				
Part Number	ADM706AR	<b>ADM705ARZ</b>	<b>ADM706ARZ-REEL</b>	<b>ADM706PAN</b>
Manufacturer	Analog Devices Inc.	Analog Devices Inc.	Analog Devices Inc.	Analog Devices Inc.
Mounting Type	Surface Mount	Surface Mount	Surface Mount	Through Hole
Reset Timeout	160ms Minimum	160ms Minimum	160ms Minimum	160ms Minimum
Number of Voltages Monitored	1	1	1	1
Voltage - Threshold	4.4V	4.65V	4.4V	2.63V
Package / Case	8-SOIC (0.154", 3.90mm Width)	8-SOIC (0.154", 3.90mm Width)	8-SOIC (0.154", 3.90mm Width)	8-DIP (0.300", 7.62mm)
Base Product Number	ADM706	ADM705	ADM706	ADM706
Supplier Device Package	8-SOIC	8-SOIC	8-SOIC	8-PDIP
Series	-	-	-	-
Output	Push-Pull, Totem Pole	Push-Pull, Totem Pole	Push-Pull, Totem Pole	Push-Pull, Totem Pole
Reset	Active Low	Active Low	Active Low	Active High
Type	Simple Reset/Power-On Reset	Simple Reset/Power-On Reset	Simple Reset/Power-On Reset	Simple Reset/Power-On Reset
Operating Temperature	-40°C ~ 85°C (TA)	-40°C ~ 85°C (TA)	-40°C ~ 85°C (TA)	-40°C ~ 85°C
Package	Tube	Tube	Tape & Reel (TR)	Tube

### ADM706AR Datasheet PDF

Download ADM706AR pdf datasheets and Analog Devices Inc. documentation for ADM706AR - Analog Devices Inc..

#### Datasheets

[Cylindrical Battery Holders.pdf](#)

#### PCN Obsolescence/ EOL

[Cylindrical Battery Holders.pdf](#)

### Customers Also Interested in

#### Recommended Products



**ADM705ARZ**

Analog Devices Inc.  
IC SUPERVISOR 1 CHANNEL 8SOIC



**ADM706ARZ-REEL**

Analog Devices Inc.  
IC SUPERVISOR 1 CHANNEL 8SOIC



**ADM706PAN**

Analog Devices Inc.  
IC SUPERVISOR MPU 2.63V WD 8DIP



**ADM706PARZ-REEL**

Analog Devices Inc.  
IC SUPERVISOR 1 CHANNEL 8SOIC



**ADM705AR**

Analog Devices Inc.  
IC SUPERVISOR 1 CHANNEL 8SOIC



**ADM706PANZ**

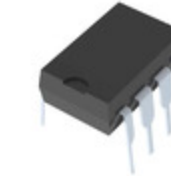
Analog Devices Inc.  
IC SUPERVISOR 1 CHANNEL 8DIP

**ADM706AR-REEL**Analog Devices Inc.  
IC SUPERVISOR 1 CHANNEL 8SOIC**ADM706JN**

NO PICTURE

**ADM706AN**Analog Devices Inc.  
IC SUPERVISOR 1 CHANNEL 8DIP**ADM706**

XINBOLE

**ADM706ARZ-REEL7**Analog Devices Inc.  
IC SUPERVISOR 1 CHANNEL 8SOIC**ADM705ARZ-REEL**Analog Devices Inc.  
IC SUPERVISOR 1 CHANNEL 8SOIC**ADM705AR-REEL7**Analog Devices Inc.  
IC SUPERVISOR 1 CHANNEL 8SOIC**ADM706ARZ**Analog Devices Inc.  
IC SUPERVISOR 1 CHANNEL 8SOIC**ADM705AR-REEL**Analog Devices Inc.  
IC SUPERVISOR 1 CHANNEL 8SOIC**ADM705ARZ-REEL7**Analog Devices Inc.  
IC SUPERVISOR 1 CHANNEL 8SOIC**ADM706ANZ**Analog Devices Inc.  
IC SUPERVISOR 1 CHANNEL 8DIP**ADM706PARZ**Analog Devices Inc.  
IC SUPERVISOR 1 CHANNEL 8SOIC

## Shipment

### Delivery Time

In-stock items can be shipped within 24 hours. Some parts will be arranged for delivery within 1-2 days from the date all items arrive at our warehouse. And Allelco ships order once a day at about 17:00, except Sunday. Once the goods are shipped, the estimated delivery time depends on the shipping methods and Delivery destination. The table below shows are the logistic time for some common countries.

### Delivery Cost

> Use your express account for shipment if you have one.

> Use our account for the shipment. Refer to the table below for the approximate charges.

(Different time frame / countries / package size has different price.)

### Delivery Method

> Global Common Shipment by DHL / UPS / FedEx / TNT / EMS / SF we support.

> Others more shipping ways, please get in touch with your customer manager.

**Common Countries Logistic Time Reference**

Region	Country	Logistic Time(Day)
America	United States	5
	Brazil	7
Europe	Germany	5
	United Kingdom	4
	Italy	5
Oceania	Australia	6
	New Zealand	7
Asia	India	6
	Japan	7
Middle East	Israel	6

**DHL & FedEx Shipment Charges Reference**

Shipment charges(KG)	Reference DHL(USD\$)
0.00kg-1.00kg	USD\$60.00
1.00kg-2.00kg	USD\$70.00
2.00kg-3.00kg	USD\$80.00

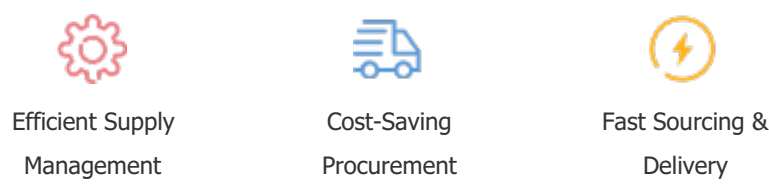
Note: The above table is for reference only. There may have some data bias for the uncontrollable factors.  
Contact us if you have any questions.

## Payment Support

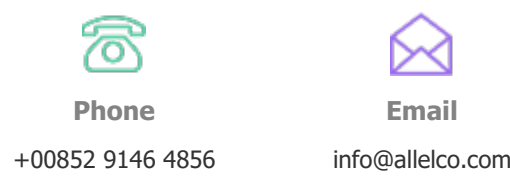
The payment method can be chosen from the methods shown below:  
Wire Transfer (T/T, Bank Transfer), Western Union, Credit card, PayPal.



## Your Faithful Supply Chain Partner -



Contact us if you have any questions.



## Certifications & Memberships



[View More](#)