

Image may be representation.  
See specifications for product details.



## LED5000PHR

|                          |   |
|--------------------------|---|
| Manufacturer Part Number | <b>LED5000PHR</b>                         |
| Manufacturer             | <b>STMicroelectronics</b>                 |
| Allelco Part Number      | 32D-LED5000PHR                            |
| ECAD Model               | PCB Symbol, Footprint & 3D Model          |
| Parts Description        | IC LED DRIVER RGLTR PWM 3A 8HSOP          |
| Package                  | 8-SOIC (0.154", 3.90mm Width) Exposed Pad |
| Data sheet               | <b>LED5000.pdf</b>                        |
| RoHs Status              | <b>ROHS3 Compliant</b>                    |

**Get a Quote**

LED5000PHR - STMicroelectronics.New Original in Stock. Download Linear Technology LED5000PHR datasheet/specifications on AllelcoElec.com.  
Request a quote for LED5000PHR, please send us email: [info@allelco.com](mailto:info@allelco.com)

### Specifications

LED5000PHR Tech Specifications  
LED5000PHR - STMicroelectronics technical specifications, attributes, parameters

| Product Attribute       | Attribute Value                           | Product Attribute          | Attribute Value    |
|-------------------------|---|----------------------------|--------------------|
| Manufacturer            | STMicroelectronics                        | Operating Temperature      | -40°C ~ 125°C (TJ) |
| Voltage - Supply (Min)  | 5.5V                                      | Number of Outputs          | 1                  |
| Voltage - Supply (Max)  | 48V                                       | Mounting Type              | Surface Mount      |
| Voltage - Output        | -   | Internal Switch(s)         | Yes                |
| Type                    | DC DC Regulator                           | Frequency                  | 850kHz             |
| Topology                | Step-Down (Buck), Step-Up (Boost)         | Dimming                    | PWM                |
| Supplier Device Package | 8-HSOP                                    | Current - Output / Channel | 3A                 |
| Series                  | -   | Base Product Number        | LED5000            |
| Package / Case          | 8-SOIC (0.154", 3.90mm Width) Exposed Pad | Applications               | Lighting, Signage  |
| Package                 | Tape & Reel (TR)                          |                            |                    |

### Parts with Similar Specifications

The three parts on the right have similar specifications to STMicroelectronics LED5000PHR

| Product Attribute          |   |                     |   |                      |
|----------------------------|---|---------------------|---|----------------------|
| Part Number                | LED5000PHR                                | <b>LED2472GBTR</b>  | <b>LED8102SXTTR</b>                         | <b>LED2472GQTR</b>   |
| Manufacturer               | STMicroelectronics                        | STMicroelectronics  | STMicroelectronics                          | STMicroelectronics   |
| Operating Temperature      | -40°C ~ 125°C (TJ)                        | -40°C ~ 85°C (TA)   | -40°C ~ 150°C (TJ)                          | -40°C ~ 85°C (TA)    |
| Topology                   | Step-Down (Buck), Step-Up (Boost)         | Shift Register      | -   | Shift Register       |
| Mounting Type              | Surface Mount                             | Surface Mount       | Surface Mount                               | Surface Mount        |
| Voltage - Output           | -   | 19V                 | 0.85V ~ 19V                                 | 19V                  |
| Dimming                    | PWM                                       | -                   | PWM   | -                    |
| Applications               | Lighting, Signage                         | Signage             | Backlight, Lighting                         | Signage              |
| Internal Switch(s)         | Yes                                       | Yes                 | Yes   | Yes                  |
| Current - Output / Channel | 3A  | 72mA                | 100mA                                       | 72mA                 |
| Package                    | Tape & Reel (TR)                          | Tape & Reel (TR)    | Tape & Reel (TR)                            | Tape & Reel (TR)     |
| Frequency                  | 850kHz                                    | 30MHz               | -   | 30MHz                |
| Supplier Device Package    | 8-HSOP                                    | 48-TQFP-EP (7x7)    | 16-HTSSOP                                   | 40-MLPQ-EP (5x5)     |
| Type                       | DC DC Regulator                           | Linear              | Linear                                      | Linear               |
| Base Product Number        | LED5000                                   | LED2472             | LED8102                                     | LED2472              |
| Voltage - Supply (Min)     | 5.5V                                      | 3V                  | 3V  | 3V                   |
| Voltage - Supply (Max)     | 48V                                       | 5.5V                | 5.5V  | 5.5V                 |
| Package / Case             | 8-SOIC (0.154", 3.90mm Width) Exposed Pad | 48-TQFP Exposed Pad | 16-TSSOP (0.173", 4.40mm Width) Exposed Pad | 40-VFQFN Exposed Pad |
| Number of Outputs          | 1   | 24                  | 8   | 24                   |
| Series                     | -   | -                   | -   | -                    |

### LED5000PHR Datasheet PDF

Download LED5000PHR pdf datasheets and STMicroelectronics documentation for LED5000PHR - STMicroelectronics.

#### PCN Packaging

[Material Barrier Bag 17/Dec/2020.pdf](#)

#### PCN Assembly/Origin

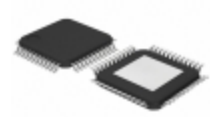
[SO8 05/Jul/2016.pdf](#)

#### HTML Datasheet

[LED5000.pdf](#)

## Customers Also Interested in

### Recommended Products



#### LED2472GBTR

STMicroelectronics  
IC LED DRIVER LINEAR 72MA  
48TQFP



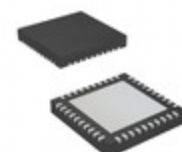
#### LED55C

onsemi  
EMITTER IR 940NM 100MA TO-46



#### LED8102SXTR

STMicroelectronics  
IC LED DRV LIN PWM 16HTSSOP



#### LED2472GQTR

STMicroelectronics  
IC LED DRIVER LINEAR 72MA  
40MLPQ



#### LED3S40

WTD



#### LED173048RSLR

Texas Instruments  
LED173048 - LED MATRIX DRIVER



#### LED6001

STMicroelectronics  
IC LED DRIVER CTRLR PWM  
16HTSSOP



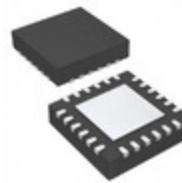
#### LED7707TR

STMicroelectronics  
IC LED DRVR RGLTR PWM  
24VFQFPN



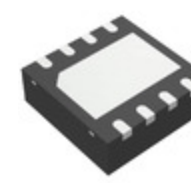
#### LED2001PHR

STMicroelectronics  
IC LED DRIVER RGLTR PWM 4A  
8HSOP



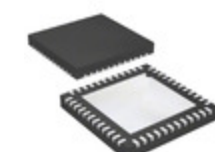
#### LED7706TR

STMicroelectronics  
IC LED DRVR RGLTR PWM  
24VFQFPN



#### LED2000PUR

STMicroelectronics  
IC LED DRVR RGLTR PWM 3A  
8VFQFPN



#### LED7708TR

STMicroelectronics  
IC LED DRVR CTRLR PWM 48VFQFPN



#### LED2000DR

STMicroelectronics  
IC LED DRIVER RGLTR PWM 3A  
8SOIC



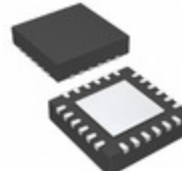
#### LED6001TR

STMicroelectronics  
IC LED DRIVER CTRLR PWM  
16HTSSOP



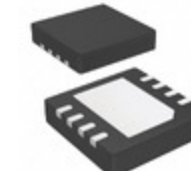
#### LED1642GWXTTR

STMicroelectronics  
IC LED DRVR LIN PWM 40MA  
24TSSOP



#### LED7706

STMicroelectronics  
IC LED DRVR RGLTR PWM  
24VFQFPN



#### LED2001PUR

STMicroelectronics  
IC LED DRVR RGLTR PWM 4A  
8VFQFPN



#### LED1642GWTR

STMicroelectronics  
IC LED DRVR LIN PWM 40MA  
24TSSOP

## Shipment

### Delivery Time

In-stock items can be shipped within 24 hours. Some parts will be arranged for delivery within 1-2 days from the date all items arrive at our warehouse. And Allelco ships order once a day at about 17:00, except Sunday. Once the goods are shipped, the estimated delivery time depends on the shipping methods and Delivery destination. The table below shows are the logistic time for some common countries.

### Delivery Cost

> Use your express account for shipment if you have one.

> Use our account for the shipment. Refer to the table below for the approximate charges.

(Different time frame / countries / package size has different price.)

### Delivery Method

> Global Common Shipment by DHL / UPS / FedEx / TNT / EMS / SF we support.

> Others more shipping ways, please get in touch with your customer manager.

Common Countries Logistic Time Reference

| Region      | Country        | Logistic Time(Day) |
|-------------|----------------|--------------------|
| America     | United States  | 5                  |
|             | Brazil         | 7                  |
| Europe      | Germany        | 5                  |
|             | United Kingdom | 4                  |
|             | Italy          | 5                  |
| Oceania     | Australia      | 6                  |
|             | New Zealand    | 7                  |
| Asia        | India          | 6                  |
|             | Japan          | 7                  |
| Middle East | Israel         | 6                  |

DHL & FedEx Shipment Charges Reference

| Shipment charges(KG) | Reference DHL(USD\$) |
|----------------------|----------------------|
| 0.00kg-1.00kg        | USD\$60.00           |
| 1.00kg-2.00kg        | USD\$70.00           |
| 2.00kg-3.00kg        | USD\$80.00           |

Note: The above table is for reference only. There may have some data bias for the uncontrollable factors.

Contact us if you have any questions.

### Payment Support

The payment method can be chosen from the methods shown below:

Wire Transfer (T/T, Bank Transfer), Western Union, Credit card,  
PayPal.



### Your Faithful Supply Chain Partner -



Efficient Supply  
Management



Cost-Saving  
Procurement



Fast Sourcing &  
Delivery

Contact us if you have any questions.



Phone

+00852 9146 4856



Email

info@allelco.com

### Certifications & Memberships



View More