

Image may be representation.
See specifications for product details.



MAX8570ELT+T

Manufacturer Part Number	MAX8570ELT+T
Manufacturer	Maxim Integrated
Allelco Part Number	32D-MAX8570ELT+T
ECAD Model	Request Free CAD Models
Parts Description	IC REG CONV LCD 10UT 6UDFN
Package	6-WDFN
Data sheet	Cylindrical Battery Holders.pdf
RoHs Status	ROHS3 Compliant

Get a Quote

MAX8570ELT+T - Analog Devices Inc./Maxim Integrated. New Original in Stock. Download Linear Technology MAX8570ELT+T datasheet/specifications on AllelcoElec.com. Request a quote for MAX8570ELT+T, please send us email: info@allelco.com

Specifications

MAX8570ELT+T Tech Specifications
MAX8570ELT+T - Analog Devices Inc./Maxim Integrated technical specifications, attributes, parameters

Product Attribute	Attribute Value	Product Attribute	Attribute Value
Manufacturer	Maxim Integrated	Package	Tape & Reel (TR)
Voltage - Output	2.7V ~ 28V	Operating Temperature	-40°C ~ 85°C
Voltage - Input	2.7V ~ 5.5V	Number of Outputs	1
Supplier Device Package	6-μDFN (2x2)	Mounting Type	Surface Mount
Series	-	Base Product Number	MAX8570
Package / Case	6-WDFN	Applications	Converter, LCD

Parts with Similar Specifications

The three parts on the right have similar specifications to Analog Devices Inc./Maxim Integrated MAX8570ELT+T

Product Attribute				
Part Number	MAX8570ELT+T	MAX8571EUT+T	MAX8570ELT+TG47	MAX8570EUT+T
Manufacturer	Analog Devices Inc./Maxim Integrated	Analog Devices Inc./Maxim Integrated	Analog Devices Inc./Maxim Integrated	Analog Devices Inc./Maxim Integrated
Package	Tape & Reel (TR)	Tape & Reel (TR)	Tape & Reel (TR)	Tape & Reel (TR)
Package / Case	6-WDFN	SOT-23-6	-	SOT-23-6
Operating Temperature	-40°C ~ 85°C	-40°C ~ 85°C	-	-40°C ~ 85°C
Supplier Device Package	6-μDFN (2x2)	SOT-6	-	SOT-6
Mounting Type	Surface Mount	Surface Mount	-	Surface Mount
Applications	Converter, LCD	Converter, LCD	-	Converter, LCD
Series	-	-	*	-
Base Product Number	MAX8570	MAX8571	MAX857	MAX8570
Voltage - Input	2.7V ~ 5.5V	2.7V ~ 5.5V	-	2.7V ~ 5.5V
Voltage - Output	2.7V ~ 28V	2.7V ~ 28V	-	2.7V ~ 28V
Number of Outputs	1	1	-	1

MAX8570ELT+T Datasheet PDF

Download MAX8570ELT+T pdf datasheets and Analog Devices Inc./Maxim Integrated documentation for MAX8570ELT+T - Analog Devices Inc./Maxim Integrated.

Datasheets

[Cylindrical Battery Holders.pdf](#)

Environmental Information

[Maxim Integrated REACH.pdf](#)

[Maxim Integrated RoHS Cert.pdf](#)

[Red Phosphorous Certificate.pdf](#)

Part Numbering Guide

[Part Numbering System.pdf](#)

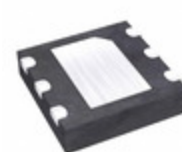
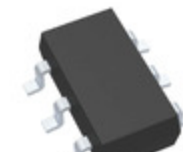
Customers Also Interested in

Recommended Products

MAX856CSA	MAX856CUA+	MAX8571EUT+T	MAX8566ETJ+	MAX856CSA+	MAX856ESA
Analog Devices Inc./Maxim Integrated	Analog Devices Inc./Maxim Integrated	Analog Devices Inc./Maxim Integrated	Analog Devices Inc./Maxim Integrated	Analog Devices Inc./Maxim Integrated	Analog Devices / Maxim Integrated
IC REG BOOST PROG 500MA 8SOIC	IC REG BOOST PROG 500MA 8UMAX	IC REG CONV LCD 10UT SOT23-6	IC REG BUCK ADJ 10A 32TQFN	IC REG BOOST PROG 500MA 8SOIC	

MAX8576EUB+Analog Devices Inc./Maxim Integrated
IC REG CTRLR BUCK 10UMAX**MAX8570ELT+TG47**Analog Devices Inc./Maxim Integrated
IC INTEGRATED CIRCUIT**MAX8570EUT+**

Analog Devices / Maxim Integrated

**MAX8566ETJ+T**Analog Devices Inc./Maxim Integrated
IC REG BUCK ADJ 10A 32TQFN**MAX8570EUT+T**Analog Devices Inc./Maxim Integrated
IC REG CONV LCD 1OUT SOT23-6**MAX856ESA+T**Analog Devices Inc./Maxim Integrated
IC REG BOOST PROG 500MA 8SOIC**MAX8571EUT+TG40**Analog Devices Inc./Maxim Integrated
INTEGRATED CIRCUIT**MAX8574EUT+T**Analog Devices Inc./Maxim Integrated
IC REG CONV LCD 1OUT SOT23-6**MAX856CSA-T**

Analog Devices / Maxim Integrated

MAX8569AETT+TAnalog Devices Inc./Maxim Integrated
IC REG BOOST ADJ 750MA 6TDFN**MAX8576EUB+T**Analog Devices Inc./Maxim Integrated
IC REG CTRLR BUCK 10UMAX**MAX8569BEUT+T**Analog Devices Inc./Maxim Integrated
IC REG BOOST 3.3V 750MA SOT23-6

Shipment

Delivery Time

In-stock items can be shipped within 24 hours. Some parts will be arranged for delivery within 1-2 days from the date all items arrive at our warehouse. And Allelco ships order once a day at about 17:00, except Sunday. Once the goods are shipped, the estimated delivery time depends on the shipping methods and Delivery destination. The table below shows are the logistic time for some common countries.

Delivery Cost

> Use your express account for shipment if you have one.

> Use our account for the shipment. Refer to the table below for the approximate charges.

(Different time frame / countries / package size has different price.)

Delivery Method

> Global Common Shipment by DHL / UPS / FedEx / TNT / EMS / SF we support.

> Others more shipping ways, please get in touch with your customer manager.

Common Countries Logistic Time Reference

Region	Country	Logistic Time(Day)
America	United States	5
	Brazil	7
Europe	Germany	5
	United Kingdom	4
	Italy	5
Oceania	Australia	6
	New Zealand	7
Asia	India	6
	Japan	7
Middle East	Israel	6

DHL & FedEx Shipment Charges Reference

Shipment charges(KG)	Reference DHL(USD\$)
0.00kg-1.00kg	USD\$60.00
1.00kg-2.00kg	USD\$70.00
2.00kg-3.00kg	USD\$80.00

Note: The above table is for reference only. There may have some data bias for the uncontrollable factors.

Contact us if you have any questions.

Payment Support

The payment method can be chosen from the methods shown below:

Wire Transfer (T/T, Bank Transfer), Western Union, Credit card, PayPal.



Your Faithful Supply Chain Partner -



Efficient Supply Management



Cost-Saving Procurement



Fast Sourcing & Delivery

Contact us if you have any questions.



Phone

+00852 9146 4856



Email

info@allelco.com

Certifications & Memberships



[View More](#)



Contact us

Address: Flat/Rm C 13/F Harvard Commercial Building 105-111 Thomson Road, Wan Chai, Hong Kong

Phone: +00852 9146 4856

Fax: +00852 3010 8510

Email: info@Allelco.com

Copyright © 2012-2023 AllelcoElec.com. All rights reserved.