



Image may be representation.  
See specifications for product details.



## ADSP-2105BP-80

Manufacturer Part Number	<b>ADSP-2105BP-80</b>
Manufacturer	<b>Analog Devices, Inc.</b>
Allelco Part Number	32D-ADSP-2105BP-80
ECAD Model	Request Free CAD Models
Parts Description	IC DSP CONTROLLER 16BIT 68PLCC
Package	68-LCC (J-Lead)
Data sheet	<b>Cylindrical Battery Holders.pdf</b>

**Get a Quote**

ADSP-2105BP-80 - Analog Devices Inc..New Original in Stock. Download Linear Technology ADSP-2105BP-80 datasheet/specifications on AllelcoElec.com.  
Request a quote for ADSP-2105BP-80, please send us email: [info@allelco.com](mailto:info@allelco.com)

### Specifications

ADSP-2105BP-80 Tech Specifications  
ADSP-2105BP-80 - Analog Devices Inc. technical specifications, attributes, parameters

Product Attribute	Attribute Value	Product Attribute	Attribute Value
Manufacturer	Analog Devices, Inc.	Operating Temperature	-40°C ~ 85°C (TA)
Voltage - I/O	5.00V	On-Chip RAM	3kB
Voltage - Core	5.00V	Non-Volatile Memory	External
Type	Fixed Point	Mounting Type	Surface Mount
Supplier Device Package	68-PLCC (24.23x24.23)	Interface	Synchronous Serial Port (SSP)
Series	ADSP-21xx	Clock Rate	20MHz
Package / Case	68-LCC (J-Lead)	Base Product Number	ADSP-2105
Package	Tube		

### Parts with Similar Specifications

The three parts on the right have similar specifications to Analog Devices Inc. ADSP-2105BP-80

Product Attribute				
Part Number	ADSP-2105BP-80	ADSP-2105BPZ-80	ADSP-21060KS-160	ADSP-21060CZ-160
Manufacturer	Analog Devices Inc.	Analog Devices Inc.	Analog Devices Inc.	Analog Devices Inc.
Voltage - I/O	5.00V	5.00V	5.00V	5.00V
Package / Case	68-LCC (J-Lead)	68-LCC (J-Lead)	240-BFQFP Exposed Pad	240-BFQFP Exposed Pad
Mounting Type	Surface Mount	Surface Mount	Surface Mount	Surface Mount
Non-Volatile Memory	External	External	External	External
Supplier Device Package	68-PLCC (24.23x24.23)	68-PLCC (24.23x24.23)	240-MQFP-EP (32x32)	240-CQFP (32x32)
On-Chip RAM	3kB	3kB	512kB	512kB
Clock Rate	20MHz	20MHz	40MHz	40MHz
Interface	Synchronous Serial Port (SSP)	Synchronous Serial Port (SSP)	Host Interface, Link Port, Serial Port	Host Interface, Link Port, Serial Port
Package	Tube	Tube	Tray	Tray
Operating Temperature	-40°C ~ 85°C (TA)	-40°C ~ 85°C (TA)	0°C ~ 85°C (TC)	-40°C ~ 100°C (TC)
Voltage - Core	5.00V	5.00V	5.00V	5.00V
Type	Fixed Point	Fixed Point	Floating Point	Floating Point
Series	ADSP-21xx	ADSP-21xx	SHARC®	SHARC®
Base Product Number	ADSP-2105	ADSP-2105	ADSP-21060	ADSP-21060

### ADSP-2105BP-80 Datasheet PDF

Download ADSP-2105BP-80 pdf datasheets and Analog Devices Inc. documentation for ADSP-2105BP-80 - Analog Devices Inc..

#### Datasheets

[Cylindrical Battery Holders.pdf](#)

#### PCN Obsolescence/ EOL

[Cylindrical Battery Holders.pdf](#)

### Customers Also Interested in

#### Recommended Products



**ADSP-2102**

ADI (Analog Devices, Inc.)

**ADSP-2105BPZ-80**

Analog Devices Inc.  
IC DSP CONTROLLER 16BIT 68PLCC

**ADSP-21060KS-160**

Analog Devices Inc.  
IC DSP CONTROLLER 32BIT 240MQFP

**ADSP-2101KP-80**

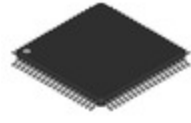
ADI (Analog Devices, Inc.)

**ADSP-21060CZ-160**

Analog Devices Inc.  
IC DSP CONTROLLER 32BIT 240CQFP

**ADSP-2104KP-80**

Analog Devices Inc.  
16-BIT DIGITAL SIGNAL PROCESSOR

**ADSP-2105KP-55**

ADI (Analog Devices, Inc.)

**ADSP-2103KS-40**Analog Devices Inc.  
16-BIT DIGITAL SIGNAL PROCESSOR**ADSP-2105KP-66**

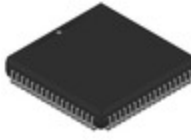
ADI (Analog Devices, Inc.)

**ADSP-2105KP-80**

ADI (Analog Devices, Inc.)

**ADSP-2105KP-55REEL**

ADI (Analog Devices, Inc.)

**ADSP-2105BPZ-80**Rochester Electronics, LLC  
ADSP-2105 - DSP MICROCOMPUTER,  
1**ADSP-2101TG-40**Rochester Electronics, LLC  
DSP, 16 BIT SIZE, 24-EXT BIT, 10**ADSP-2105BP-55**Analog Devices Inc.  
16-BIT DIGITAL SIGNAL PROCESSOR**ADSP-21020KG-133**

ADI (Analog Devices, Inc.)

**ADSP-2105KP-40**

ADI (Analog Devices, Inc.)

**ADSP-2104BP-80**

ADI (Analog Devices, Inc.)

**ADSP-2105KP-55X**

ADI (Analog Devices, Inc.)

## Shipment

### Delivery Time

In-stock items can be shipped within 24 hours. Some parts will be arranged for delivery within 1-2 days from the date all items arrive at our warehouse. And Allelco ships order once a day at about 17:00, except Sunday. Once the goods are shipped, the estimated delivery time depends on the shipping methods and Delivery destination. The table below shows are the logistic time for some common countries.

### Delivery Cost

> Use your express account for shipment if you have one.

> Use our account for the shipment. Refer to the table below for the approximate charges.

(Different time frame / countries / package size has different price.)

### Delivery Method

> Global Common Shipment by DHL / UPS / FedEx / TNT / EMS / SF we support.

> Others more shipping ways, please get in touch with your customer manager.

**Common Countries Logistic Time Reference**

Region	Country	Logistic Time(Day)
America	United States	5
	Brazil	7
Europe	Germany	5
	United Kingdom	4
	Italy	5
Oceania	Australia	6
	New Zealand	7
Asia	India	6
	Japan	7
Middle East	Israel	6

**DHL & FedEx Shipment Charges Reference**

Shipment charges(KG)	Reference DHL(USD\$)
0.00kg-1.00kg	USD\$60.00
1.00kg-2.00kg	USD\$70.00
2.00kg-3.00kg	USD\$80.00

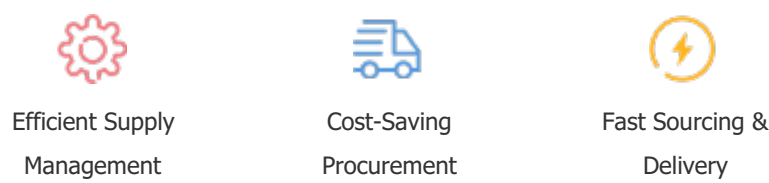
Note: The above table is for reference only. There may have some data bias for the uncontrollable factors.  
Contact us if you have any questions.

## Payment Support

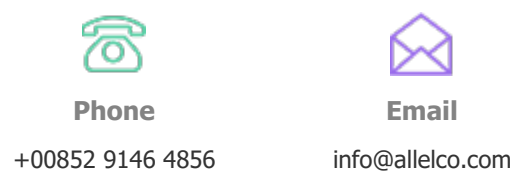
The payment method can be chosen from the methods shown below:  
Wire Transfer (T/T, Bank Transfer), Western Union, Credit card,  
PayPal.



## Your Faithful Supply Chain Partner -



Contact us if you have any questions.



Phone  
+00852 9146 4856

Email  
info@allelco.com

## Certifications & Memberships



[View More](#)



### Contact us

Address: Flat/Rm C 13/F Harvard Commercial Building 105-111 Thomson Road, Wan Chai, Hong Kong

Phone: +00852 9146 4856

Fax: +00852 3010 8510

Email: info@allelco.com

Copyright © 2012-2023 AllelcoElec.com. All rights reserved.