



Image may be representation.
See specifications for product details.



STL6P3LLH6

Manufacturer Part Number	STL6P3LLH6
Manufacturer	STMicroelectronics
Allelco Part Number	32D-STL6P3LLH6
ECAD Model	3D Model
Parts Description	MOSFET P-CH 30V 6A POWERFLAT
Package	8-PowerVDFN
Data sheet	STL6P3LLH6.pdf
RoHs Status	ROHS3 Compliant

Get a Quote

STL6P3LLH6 - STMicroelectronics.New Original in Stock. Download Linear Technology STL6P3LLH6 datasheet/specifications on AllelcoElec.com.
Request a quote for STL6P3LLH6, please send us email: info@allelco.com

Specifications

STL6P3LLH6 Tech Specifications
STL6P3LLH6 - STMicroelectronics technical specifications, attributes, parameters

Product Attribute	Attribute Value	Product Attribute	Attribute Value
Manufacturer	STMicroelectronics	Operating Temperature	150°C (TJ)
Vgs(th) (Max) @ Id	1V @ 250µA (Min)	Mounting Type	Surface Mount
Vgs (Max)	±20V	Input Capacitance (Ciss) (Max) @ Vds	1450 pF @ 25 V
Technology	MOSFET (Metal Oxide)	Gate Charge (Qg) (Max) @ Vgs	12 nC @ 4.5 V
Supplier Device Package	PowerFlat™ (3.3x3.3)	FET Type	P-Channel
Series	STripFET™ H6	FET Feature	-
Rds On (Max) @ Id, Vgs	30mOhm @ 3A, 10V	Drive Voltage (Max Rds On, Min Rds On)	4.5V, 10V
Power Dissipation (Max)	2.9W (Tc)	Drain to Source Voltage (Vdss)	30 V
Package / Case	8-PowerVDFN	Current - Continuous Drain (Id) @ 25°C	6A (Tc)
Package	Tape & Reel (TR)	Base Product Number	STL6

Parts with Similar Specifications

The three parts on the right have similar specifications to STMicroelectronics STL6P3LLH6

Product Attribute				
Part Number	STL6P3LLH6	STL75N3LLZH5	STL75NH3LL	STL75N8LF6
Manufacturer	STMicroelectronics	STMicroelectronics	STMicroelectronics	STMicroelectronics
Gate Charge (Qg) (Max) @ Vgs	12 nC @ 4.5 V	11.8 nC @ 4.5 V	24 nC @ 4.5 V	125 nC @ 4.5 V
Series	STripFET™ H6	STripFET™ V	STripFET™	DeepGATE™, STripFET™ VI
Drain to Source Voltage (Vdss)	30 V	30 V	30 V	80 V
Supplier Device Package	PowerFlat™ (3.3x3.3)	PowerFlat™ (5x6)	PowerFlat™ (5x6)	PowerFlat™ (5x6)
Technology	MOSFET (Metal Oxide)	MOSFET (Metal Oxide)	MOSFET (Metal Oxide)	MOSFET (Metal Oxide)
Power Dissipation (Max)	2.9W (Tc)	60W (Tc)	60W (Tc)	80W (Tc)
Vgs(th) (Max) @ Id	1V @ 250µA (Min)	1V @ 250µA	1V @ 250µA	1V @ 250µA
FET Feature	-	-	-	-
Package / Case	8-PowerVDFN	8-PowerVDFN	8-PowerVDFN	8-PowerVDFN
Operating Temperature	150°C (TJ)	-55°C ~ 150°C (TJ)	-55°C ~ 150°C (TJ)	-55°C ~ 175°C (TJ)
Drive Voltage (Max Rds On, Min Rds On)	4.5V, 10V	4.5V, 10V	4.5V, 10V	5V, 10V
Rds On (Max) @ Id, Vgs	30mOhm @ 3A, 10V	6.1mOhm @ 9.5A, 10V	5.7mOhm @ 10A, 10V	7.4mOhm @ 9A, 10V
Current - Continuous Drain (Id) @ 25°C	6A (Tc)	75A (Tc)	75A (Tc)	75A (Tc)
Mounting Type	Surface Mount	Surface Mount	Surface Mount	Surface Mount
Package	Tape & Reel (TR)	Tape & Reel (TR)	Tape & Reel (TR)	Tape & Reel (TR)
Input Capacitance (Ciss) (Max) @ Vds	1450 pF @ 25 V	1510 pF @ 25 V	1810 pF @ 25 V	6895 pF @ 25 V
Base Product Number	STL6	STL75	STL75	STL75
FET Type	P-Channel	N-Channel	N-Channel	N-Channel
Vgs (Max)	±20V	±18V	±16V	+21V, -16V

STL6P3LLH6 Datasheet PDF

Download STL6P3LLH6 pdf datasheets and STMicroelectronics documentation for STL6P3LLH6 - STMicroelectronics.

Datasheets

STL6P3LLH6.pdf

PCN Packaging

Box Label Chg 28/Jul/2016.pdf

IPD/15/9333 21/Jul/2015.pdf

PCN Assembly/Origin



Customers Also Interested in

Recommended Products

STL6931-1C4F GREEN	STL76DN4LF7AG STMicroelectronics MOSFET 2N-CH 40V 40A PWRFLAT	STL6921-1A4F SENTELIC	STL75N3LLZH5 STMicroelectronics MOSFET N-CH 30V 75A POWERFLAT	STL6921-1C4F SENTELIC	STL7060 SEC
STL65DN3LLH5 STMicroelectronics MOSFET 2N-CH 30V 65A POWERFLAT	STL6931-1C4FA SENTELIC	STL6921-1B4F SENTELIC	STL6931-1K4L SENTELIC	STL71L STMicroelectronics	STL75NH3LL STMicroelectronics MOSFET N-CH 30V 75A POWERFLAT
STL73D STMicroelectronics TRANS NPN 400V 1.5A TO92-3	STL75N8LF6 STMicroelectronics MOSFET N-CH 80V 75A POWERFLAT	STL66N3LLH5 STMicroelectronics MOSFET N-CH 30V 80A POWERFLAT	STL6NK55Z STMicroelectronics	STL65N3LLH5 STMicroelectronics MOSFET N-CH 30V 65A POWERFLAT	STL70N4LLF5 STMicroelectronics MOSFET N-CH 40V 70A POWERFLAT

Shipment

Delivery Time

In-stock items can be shipped within 24 hours. Some parts will be arranged for delivery within 1-2 days from the date all items arrive at our warehouse. And Allelco ships order once a day at about 17:00, except Sunday. Once the goods are shipped, the estimated delivery time depends on the shipping methods and Delivery destination. The table below shows are the logistic time for some common countries.

Delivery Cost

> Use your express account for shipment if you have one.

> Use our account for the shipment. Refer to the table below for the approximate charges.

(Different time frame / countries / package size has different price.)

Delivery Method

> Global Common Shipment by DHL / UPS / FedEx / TNT / EMS / SF we support.

> Others more shipping ways, please get in touch with your customer manager.

Common Countries Logistic Time Reference		
Region	Country	Logistic Time(Day)
America	United States	5
	Brazil	7
Europe	Germany	5
	United Kingdom	4
	Italy	5
Oceania	Australia	6
	New Zealand	7
Asia	India	6
	Japan	7
Middle East	Israel	6

DHL & FedEx Shipment Charges Reference	
Shipment charges(KG)	Reference DHL(USD\$)
0.00kg-1.00kg	USD\$60.00
1.00kg-2.00kg	USD\$70.00
2.00kg-3.00kg	USD\$80.00

Note: The above table is for reference only. There may have some data bias for the uncontrollable factors.

Contact us if you have any questions.

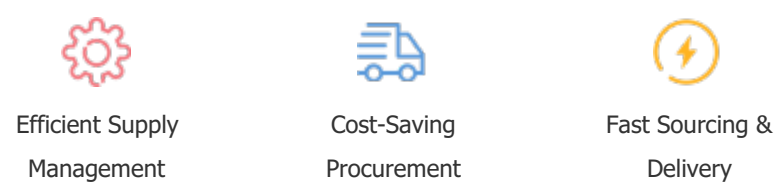
Payment Support

The payment method can be chosen from the methods shown below:

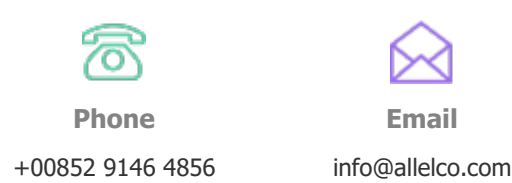
Wire Transfer (T/T, Bank Transfer), Western Union, Credit card, PayPal.



Your Faithful Supply Chain Partner -



Contact us if you have any questions.



Certifications & Memberships



[View More](#)