

Image may be representation.
See specifications for product details.



MAX6764UT+T

Manufacturer Part Number	MAX6764UT+T
Manufacturer	Maxim Integrated
Allelco Part Number	32D-MAX6764UT+T
ECAD Model	Request Free CAD Models
Parts Description	IC SUPERVISOR 1 CHANNEL SOT23-6
Package	SOT-23-6
Data sheet	MAX6754-64.pdf
RoHs Status	ROHS3 Compliant

Get a Quote

MAX6764UT+T - Analog Devices Inc./Maxim Integrated.New Original in Stock. Download Linear Technology MAX6764UT+T datasheet/specifications on AllelcoElec.com. Request a quote for MAX6764UT+T, please send us email: info@allelco.com

Specifications

MAX6764UT+T Tech Specifications

MAX6764UT+T - Analog Devices Inc./Maxim Integrated technical specifications, attributes, parameters

Product Attribute	Attribute Value	Product Attribute	Attribute Value
Manufacturer	Maxim Integrated	Package / Case	SOT-23-6
Voltage - Threshold	Adjustable/Selectable	Package	Tape & Reel (TR)
Type	Simple Reset/Power-On Reset	Output	Open Drain or Open Collector
Supplier Device Package	SOT-6	Operating Temperature	-40°C ~ 125°C (TA)
Series	-	Number of Voltages Monitored	1
Reset Timeout	Adjustable/Selectable	Mounting Type	Surface Mount
Reset	Active Low	Base Product Number	MAX6764

Parts with Similar Specifications

The three parts on the right have similar specifications to Analog Devices Inc./Maxim Integrated MAX6764UT+T

Product Attribute				
Part Number	MAX6764UT+T	MAX6762TATAD3	MAX6763UT+T	MAX6769TAYD3+T
Manufacturer	Analog Devices Inc./Maxim Integrated	Analog Devices Inc./Maxim Integrated	Analog Devices Inc./Maxim Integrated	Analog Devices Inc./Maxim Integrated
Voltage - Threshold	Adjustable/Selectable	3.3V, Adj	Adjustable/Selectable	1.085V, Adj
Type	Simple Reset/Power-On Reset	Multi-Voltage Supervisor	Simple Reset/Power-On Reset	Regulator/Supervisor
Output	Open Drain or Open Collector	Open Drain, Push-Pull	Push-Pull, Totem Pole	Open Drain or Open Collector
Operating Temperature	-40°C ~ 125°C (TA)	-40°C ~ 125°C (TA)	-40°C ~ 125°C (TA)	-40°C ~ 125°C
Number of Voltages Monitored	1	2	1	1
Reset Timeout	Adjustable/Selectable	100ms Minimum	Adjustable/Selectable	35ms Minimum
Package	Tape & Reel (TR)	Bulk	Tape & Reel (TR)	Tape & Reel (TR)
Mounting Type	Surface Mount	Surface Mount	Surface Mount	Surface Mount
Base Product Number	MAX6764	MAX6762	MAX6763	MAX6769
Supplier Device Package	SOT-6	8-TDFN-EP (3x3)	SOT-6	8-TDFN (3x3)
Series	-	Automotive, AEC-Q100	-	-
Reset	Active Low	Active Low	Active Low	Active Low
Package / Case	SOT-23-6	8-WDFN Exposed Pad	SOT-23-6	8-WDFN Exposed Pad

MAX6764UT+T Datasheet PDF

Download MAX6764UT+T pdf datasheets and Analog Devices Inc./Maxim Integrated documentation for MAX6764UT+T - Analog Devices Inc./Maxim Integrated.

Datasheets

[MAX6754-64.pdf](#)

Environmental Information

[Maxim Integrated REACH.pdf](#)

[Maxim Integrated RoHS Cert.pdf](#)

[Red Phosphorous Certificate.pdf](#)

Part Numbering Guide

[Part Numbering System.pdf](#)

Customers Also Interested in

Recommended Products



MAX6765TTSD2/V+

Analog Devices / Maxim Integrated

MAX6762TATAD3

Analog Devices Inc./Maxim Integrated
IC SUPERVISOR DL VOLT WINDOW

MAX6762TATAD3-T

Analog Devices / Maxim Integrated

MAX6763UT+T

Analog Devices Inc./Maxim Integrated
IC SUPERVISOR 1 CHANNEL SOT23-6

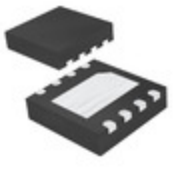
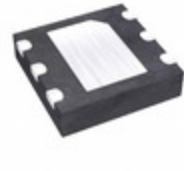
MAX675CSA

Analog Devices / Maxim Integrated

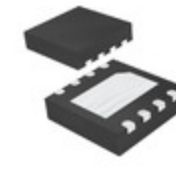
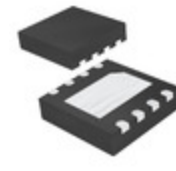
MAX6769TAYD3+T

Analog Devices Inc./Maxim Integrated
IC SUPERVISOR 1 CHANNEL 8TDFN

DET

**MAX6771TALD2+T**Analog Devices Inc./Maxim Integrated
IC SUPERVISOR 1 CHANNEL 8TDFN**MAX6765TTSD2+T**Analog Devices Inc./Maxim Integrated
IC SUPERVISOR 1 CHANNEL 6TDFN**MAX675ESA+T**Analog Devices Inc./Maxim Integrated
IC VREF SERIES 0.15% 8SOIC**MAX675EPA**

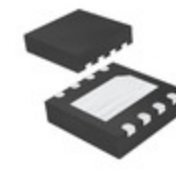
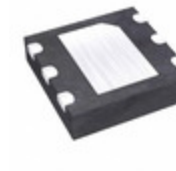
Analog Devices / Maxim Integrated

**MAX6772TASD2+T**Analog Devices Inc./Maxim Integrated
IC REG LINEAR 3.3V/ADJ 8-TDFN**MAX6769TAVD3+T**Analog Devices Inc./Maxim Integrated
IC SUPERVISOR 1 CHANNEL 8TDFN**MAX675ESA**

Analog Devices / Maxim Integrated

**MAX6769TALD2+T**Analog Devices Inc./Maxim Integrated
IC REG LINEAR 5V/ADJ 8-TDFN**MAX675CPA+**Analog Devices Inc./Maxim Integrated
IC VREF SERIES 0.15% 8DIP**MAX6764UT**

Analog Devices / Maxim Integrated

**MAX6762TATWD3+T**Analog Devices Inc./Maxim Integrated
IC DETECT VOLT WINDOW 8-TDFN**MAX6765TTLD2+T**Analog Devices Inc./Maxim Integrated
IC SUPERVISOR 1 CHANNEL 6TDFN

Shipment

Delivery Time

In-stock items can be shipped within 24 hours. Some parts will be arranged for delivery within 1-2 days from the date all items arrive at our warehouse. And Allelco ships order once a day at about 17:00, except Sunday. Once the goods are shipped, the estimated delivery time depends on the shipping methods and Delivery destination. The table below shows are the logistic time for some common countries.

Delivery Cost

> Use your express account for shipment if you have one.

> Use our account for the shipment. Refer to the table below for the approximate charges.

(Different time frame / countries / package size has different price.)

Delivery Method

> Global Common Shipment by DHL / UPS / FedEx / TNT / EMS / SF we support.

> Others more shipping ways, please get in touch with your customer manager.

Common Countries Logistic Time Reference		
Region	Country	Logistic Time(Day)
America	United States	5
	Brazil	7
Europe	Germany	5
	United Kingdom	4
	Italy	5
Oceania	Australia	6
	New Zealand	7
Asia	India	6
	Japan	7
Middle East	Israel	6

DHL & FedEx Shipment Charges Reference	
Shipment charges(KG)	Reference DHL(USD\$)
0.00kg-1.00kg	USD\$60.00
1.00kg-2.00kg	USD\$70.00
2.00kg-3.00kg	USD\$80.00

Note: The above table is for reference only. There may have some data bias for the uncontrollable factors.

Contact us if you have any questions.

Payment Support

The payment method can be chosen from the methods shown below:

Wire Transfer (T/T, Bank Transfer), Western Union, Credit card, PayPal.



Your Faithful Supply Chain Partner -



Efficient Supply Management



Cost-Saving Procurement



Fast Sourcing & Delivery

Contact us if you have any questions.



Phone

+00852 9146 4856



Email

info@allelco.com

Certifications & Memberships



[View More](#)



Contact us

Address: Flat/Rm C 13/F Harvard Commercial Building 105-111 Thomson Road, Wan Chai, Hong Kong

Phone: +00852 9146 4856

Fax: +00852 3010 8510

Email: info@Allelco.com

Copyright © 2012-2023 AllelcoElec.com. All rights reserved.