

Image may be representation.
See specifications for product details.



ADSP-21262SKBCZ200

| | |
|--------------------------|--|
| Manufacturer Part Number | ADSP-21262SKBCZ200 |
| Manufacturer | Analog Devices, Inc. |
| Allelco Part Number | 32D-ADSP-21262SKBCZ200 |
| ECAD Model | Request Free CAD Models |
| Parts Description | IC DSP CTRLR 32BIT 136CSBGA |
| Package | 136-LFBGA, CSPBGA |
| Data sheet | Cylindrical Battery Holders.pdf |
| RoHs Status | ROHS3 Compliant |

Get a Quote

ADSP-21262SKBCZ200 - Analog Devices Inc..New Original in Stock. Download Linear Technology ADSP-21262SKBCZ200 datasheet/specifications on AllelcoElec.com. Request a quote for ADSP-21262SKBCZ200, please send us email: info@allelco.com

Specifications

ADSP-21262SKBCZ200 Tech Specifications
ADSP-21262SKBCZ200 - Analog Devices Inc. technical specifications, attributes, parameters

| Product Attribute | Attribute Value | Product Attribute | Attribute Value |
|-------------------------|----------------------|-----------------------|-----------------|
| Manufacturer | Analog Devices, Inc. | Operating Temperature | 0°C ~ 70°C (TA) |
| Voltage - I/O | 3.30V | On-Chip RAM | 256kB |
| Voltage - Core | 1.20V | Non-Volatile Memory | ROM (512kB) |
| Type | Floating Point | Mounting Type | Surface Mount |
| Supplier Device Package | 136-CSPBGA (12x12) | Interface | DAI, SPI |
| Series | SHARC® | Clock Rate | 200MHz |
| Package / Case | 136-LFBGA, CSPBGA | Base Product Number | ADSP-21262 |
| Package | Tray | | |

Parts with Similar Specifications

The three parts on the right have similar specifications to Analog Devices Inc. ADSP-21262SKBCZ200

| Product Attribute | | | | |
|-------------------------|---------------------|---------------------|---------------------|---------------------|
| Part Number | ADSP-21262SKBCZ200 | ADSP-21266SKSTZ-2D | ADSP-21262SBBCZ150 | ADSP-21261SKBCZ150 |
| Manufacturer | Analog Devices Inc. | Analog Devices Inc. | Analog Devices Inc. | Analog Devices Inc. |
| Type | Floating Point | Floating Point | Floating Point | Floating Point |
| On-Chip RAM | 256kB | 256kB | 256kB | 128kB |
| Mounting Type | Surface Mount | Surface Mount | Surface Mount | Surface Mount |
| Package / Case | 136-LFBGA, CSPBGA | 144-LQFP | 136-LFBGA, CSPBGA | 136-LFBGA, CSPBGA |
| Package | Tray | Tray | Tray | Tray |
| Voltage - Core | 1.20V | 1.20V | 1.20V | 1.20V |
| Clock Rate | 200MHz | 200MHz | 150MHz | 150MHz |
| Series | SHARC® | SHARC® | SHARC® | SHARC® |
| Base Product Number | ADSP-21262 | ADSP-21266 | ADSP-21262 | ADSP-21261 |
| Supplier Device Package | 136-CSPBGA (12x12) | 144-LQFP (20x20) | 136-CSPBGA (12x12) | 136-CSPBGA (12x12) |
| Interface | DAI, SPI | DAI, SPI | DAI, SPI | DAI, SPI |
| Operating Temperature | 0°C ~ 70°C (TA) | 0°C ~ 70°C (TA) | -40°C ~ 85°C (TA) | 0°C ~ 70°C (TA) |
| Voltage - I/O | 3.30V | 3.30V | 3.30V | 3.30V |
| Non-Volatile Memory | ROM (512kB) | ROM (512kB) | ROM (512kB) | ROM (384kB) |

ADSP-21262SKBCZ200 Datasheet PDF

Download ADSP-21262SKBCZ200 pdf datasheets and Analog Devices Inc. documentation for ADSP-21262SKBCZ200 - Analog Devices Inc..

Datasheets

[Cylindrical Battery Holders.pdf](#)

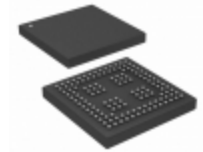
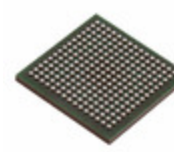
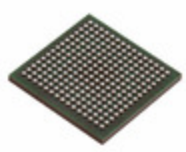
Other Related Documents

[Cylindrical Battery Holders.pdf](#)

Customers Also Interested in

Recommended Products

| | | | | | |
|---|----------------------------|----------------------------|---|---|----------------------------|
| | | | | | |
| ADSP-21266SKSTZ-2D | ADSP-21266SKSTZ-1B | ADSP-21266SKBCZ-2 | ADSP-21262SBBCZ150 | ADSP-21261SKBCZ150 | ADSP-21266SKSTZ-2B |
| Analog Devices Inc. IC DSP 32BIT 150MHZ 144-LQFP | ADI (Analog Devices, Inc.) | ADI (Analog Devices, Inc.) | Analog Devices Inc. IC DSP 32BIT 150MHZ 136CSBGA | Analog Devices Inc. IC DSP 32BIT 150MHZ 136CSBGA | ADI (Analog Devices, Inc.) |

**ADSP-21161NKCAZ100**ADI (Analog Devices, Inc.)
IC DSP CONTROLLER 32BIT
225MBGA**ADSP-21266SKBCZ-2C**

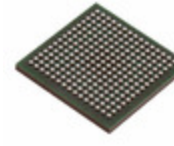
ADI (Analog Devices, Inc.)

ADSP-21266SKSTZ-2C

ADI (Analog Devices, Inc.)

ADSP-21266

Analog Technologies

ADSP-21161NCCA100Analog Devices Inc.
IC DSP CONTROLLER 32BIT
225MBGA**ADSP-21262SKBC-200**Analog Devices Inc.
IC DSP 32BIT 200MHZ 136CSBGA**ADSP-21161NKCA100**

ADI (Analog Devices, Inc.)

ADSP-21261SKSTZ150Analog Devices Inc.
IC DSP 32BIT 150MHZ 144LQFP**ADSP-21266SKSTZ-1C**

ADI/PBF

ADSP-21262SKSTZ200Analog Devices Inc.
IC DSP CONTROLLER 32BIT 144-
LQFP**ADSP-21161NKCA-100**Analog Devices Inc.
IC DSP CONTROLLER 32BIT
225MBGA**ADSP-2116KP-66**

NA

Shipment

Delivery Time

In-stock items can be shipped within 24 hours. Some parts will be arranged for delivery within 1-2 days from the date all items arrive at our warehouse. And Allelco ships order once a day at about 17:00, except Sunday. Once the goods are shipped, the estimated delivery time depends on the shipping methods and Delivery destination. The table below shows are the logistic time for some common countries.

Delivery Cost

> Use your express account for shipment if you have one.

> Use our account for the shipment. Refer to the table below for the approximate charges.

(Different time frame / countries / package size has different price.)

Delivery Method

> Global Common Shipment by DHL / UPS / FedEx / TNT / EMS / SF we support.

> Others more shipping ways, please get in touch with your customer manager.

Common Countries Logistic Time Reference

| Region | Country | Logistic Time(Day) |
|-------------|----------------|--------------------|
| America | United States | 5 |
| | Brazil | 7 |
| Europe | Germany | 5 |
| | United Kingdom | 4 |
| | Italy | 5 |
| Oceania | Australia | 6 |
| | New Zealand | 7 |
| Asia | India | 6 |
| | Japan | 7 |
| Middle East | Israel | 6 |

DHL & FedEx Shipment Charges Reference

| Shipment charges(KG) | Reference DHL(USD\$) |
|----------------------|----------------------|
| 0.00kg-1.00kg | USD\$60.00 |
| 1.00kg-2.00kg | USD\$70.00 |
| 2.00kg-3.00kg | USD\$80.00 |

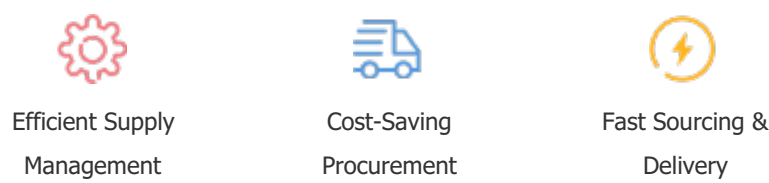
Note: The above table is for reference only. There may have some data bias for the uncontrollable factors.
Contact us if you have any questions.

Payment Support

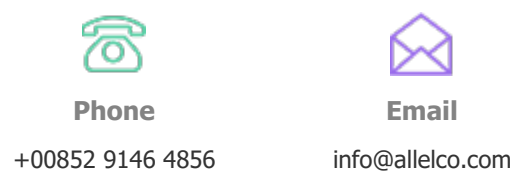
The payment method can be chosen from the methods shown below:
Wire Transfer (T/T, Bank Transfer), Western Union, Credit card,
PayPal.



Your Faithful Supply Chain Partner -



Contact us if you have any questions.



Certifications & Memberships



[View More](#)



Contact us

Address: Flat/Rm C 13/F Harvard Commercial Building 105-111 Thomson Road, Wan Chai, Hong Kong

Phone: +00852 9146 4856

Fax: +00852 3010 8510

Email: info@Allelco.com

Copyright © 2012-2023 AllelcoElec.com. All rights reserved.