

Image may be representation.
See specifications for product details.



XC7Z035-1FBG676C

Manufacturer Part Number	XC7Z035-1FBG676C
Manufacturer	AMD Xilinx
Allelco Part Number	32D-XC7Z035-1FBG676C
ECAD Model	Request Free CAD Models
Parts Description	IC SOC CORTEX-A9 667MHZ 676FCBGA
Package	676-BBGA, FCBGA
Data sheet	XC7Z035-1FBG676C.pdf
RoHs Status	ROHS3 Compliant

Get a Quote

XC7Z035-1FBG676C - AMD.New Original in Stock. Download Linear Technology XC7Z035-1FBG676C datasheet/specifications on AllelcoElec.com.
Request a quote for XC7Z035-1FBG676C, please send us email: info@allelco.com

Specifications

XC7Z035-1FBG676C Tech Specifications
XC7Z035-1FBG676C - AMD technical specifications, attributes, parameters

Product Attribute	Attribute Value	Product Attribute	Attribute Value
Manufacturer	AMD Xilinx	Package	Tray
Supplier Device Package	676-FCBGA (27x27)	Operating Temperature	0°C ~ 85°C (TJ)
Speed	667MHz	Number of I/O	130
Series	Zynq®-7000	Flash Size	-
RAM Size	256KB	Core Processor	Dual ARM® Cortex®-A9 MPCore™ with CoreSight™
Primary Attributes	Kintex™-7 FPGA, 275K Logic Cells	Connectivity	CANbus, EBI/EMI, Ethernet, I²C, MMC/SD/SDIO, SPI, UART/USART, USB OTG
Peripherals	DMA	Base Product Number	XC7Z035
Package / Case	676-BBGA, FCBGA	Architecture	MCU, FPGA

Parts with Similar Specifications

The three parts on the right have similar specifications to AMD XC7Z035-1FBG676C

Product Attribute				
Part Number	XC7Z035-1FBG676C	XC7Z035-1FFG900C	XC7Z030-L2FBG676I	XC7Z030-3FFG676E
Manufacturer	AMD	AMD	AMD	AMD
RAM Size	256KB	256KB	256KB	256KB
Flash Size	-	-	-	-
Base Product Number	XC7Z035	XC7Z035	XC7Z030	XC7Z030
Connectivity	CANbus, EBI/EMI, Ethernet, I²C, MMC/SD/SDIO, SPI, UART/USART, USB OTG	CANbus, EBI/EMI, Ethernet, I²C, MMC/SD/SDIO, SPI, UART/USART, USB OTG	CANbus, EBI/EMI, Ethernet, I²C, MMC/SD/SDIO, SPI, UART/USART, USB OTG	CANbus, EBI/EMI, Ethernet, I²C, MMC/SD/SDIO, SPI, UART/USART, USB OTG
Package	Tray	Tray	Tray	Tray
Primary Attributes	Kintex™-7 FPGA, 275K Logic Cells	Kintex™-7 FPGA, 275K Logic Cells	Kintex™-7 FPGA, 125K Logic Cells	Kintex™-7 FPGA, 125K Logic Cells
Series	Zynq®-7000	Zynq®-7000	Zynq®-7000	Zynq®-7000
Supplier Device Package	676-FCBGA (27x27)	900-FCBGA (31x31)	676-FCBGA (27x27)	676-FCBGA (27x27)
Number of I/O	130	130	130	130
Architecture	MCU, FPGA	MCU, FPGA	MCU, FPGA	MCU, FPGA
Operating Temperature	0°C ~ 85°C (TJ)	0°C ~ 85°C (TJ)	-40°C ~ 100°C (TJ)	0°C ~ 100°C (TJ)
Peripherals	DMA	DMA	DMA	DMA
Package / Case	676-BBGA, FCBGA	900-BBGA, FCBGA	676-BBGA, FCBGA	676-BBGA, FCBGA
Core Processor	Dual ARM® Cortex®-A9 MPCore™ with CoreSight™	Dual ARM® Cortex®-A9 MPCore™ with CoreSight™	Dual ARM® Cortex®-A9 MPCore™ with CoreSight™	Dual ARM® Cortex®-A9 MPCore™ with CoreSight™
Speed	667MHz	667MHz	800MHz	1GHz

XC7Z035-1FBG676C Datasheet PDF

Download XC7Z035-1FBG676C pdf datasheets and AMD documentation for XC7Z035-1FBG676C - AMD.

Environmental Information

[Xilinx REACH211 Cert.pdf](#)

PCN Design/Specification

[Cross-Ship Lead-Free Notice 31/Oct/2016.pdf](#)

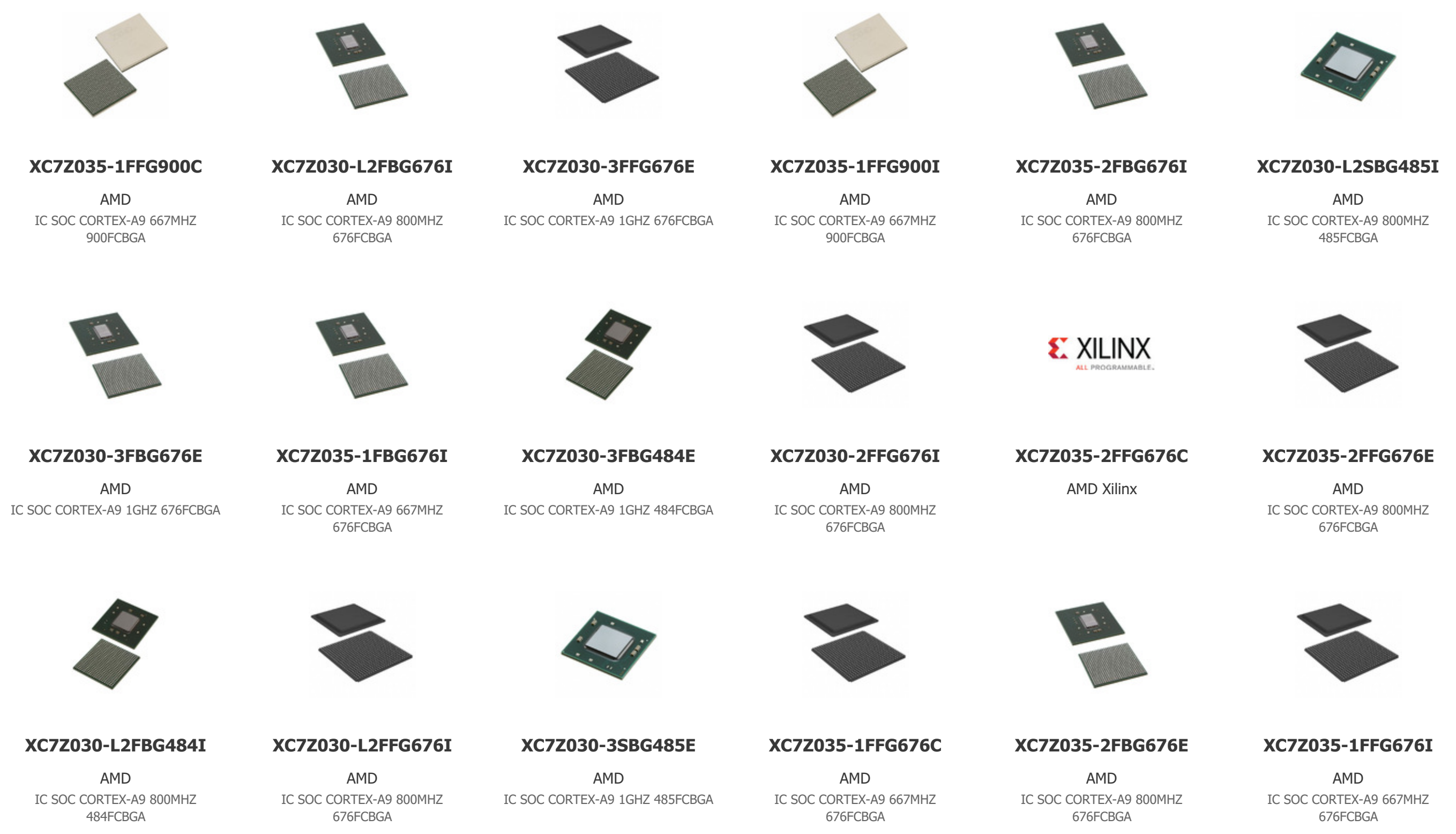
[Product Marking Chg 31/Oct/2016.pdf](#)

PCN Packaging

[2.73KHz.pdf](#)

Customers Also Interested in

Recommended Products



Shipment

Delivery Time

In-stock items can be shipped within 24 hours. Some parts will be arranged for delivery within 1-2 days from the date all items arrive at our warehouse. And Allelco ships order once a day at about 17:00, except Sunday. Once the goods are shipped, the estimated delivery time depends on the shipping methods and Delivery destination. The table below shows are the logistic time for some common countries.

Delivery Cost

> Use your express account for shipment if you have one.

> Use our account for the shipment. Refer to the table below for the approximate charges.

(Different time frame / countries / package size has different price.)

Delivery Method

> Global Common Shipment by DHL / UPS / FedEx / TNT / EMS / SF we support.

> Others more shipping ways, please get in touch with your customer manager.

Common Countries Logistic Time Reference		
Region	Country	Logistic Time(Day)
America	United States	5
	Brazil	7
Europe	Germany	5
	United Kingdom	4
	Italy	5
Oceania	Australia	6
	New Zealand	7
Asia	India	6
	Japan	7
Middle East	Israel	6

DHL & FedEx Shipment Charges Reference	
Shipment charges(KG)	Reference DHL(USD\$)
0.00kg-1.00kg	USD\$60.00
1.00kg-2.00kg	USD\$70.00
2.00kg-3.00kg	USD\$80.00

Note: The above table is for reference only. There may have some data bias for the uncontrollable factors.

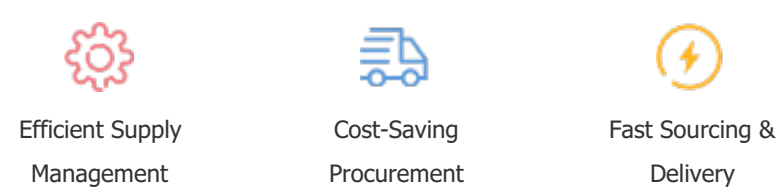
Contact us if you have any questions.

Payment Support

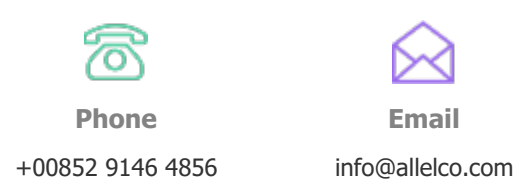
The payment method can be chosen from the methods shown below:
Wire Transfer (T/T, Bank Transfer), Western Union, Credit card,
PayPal.



Your Faithful Supply Chain Partner -



Contact us if you have any questions.



Certifications & Memberships



View More