



FGD3040G2-F085

Manufacturer Part Number	FGD3040G2-F085
Manufacturer	Fairchild (onsemi)
Allelco Part Number	32D-FGD3040G2-F085
ECAD Model	PCB Footprint and Symbol
Parts Description	FGD3040G2_F085 - ECOSPARK2 IGN-I
Package	TO-252-3, DPak (2 Leads + Tab), SC-63
Data sheet	FGD3040G2_F085.pdf



[Get a Quote](#)

FGD3040G2-F085 - Fairchild Semiconductor. New Original in Stock. Download Linear Technology FGD3040G2-F085 datasheet/specifications on AllelcoElec.com.
Request a quote for FGD3040G2-F085, please send us email: info@allelco.com

Specifications

FGD3040G2-F085 Tech Specifications
FGD3040G2-F085 - Fairchild Semiconductor technical specifications, attributes, parameters

Product Attribute	Attribute Value	Product Attribute	Attribute Value
Manufacturer	Fairchild (onsemi)	Package / Case	TO-252-3, DPak (2 Leads + Tab), SC-63
Voltage - Collector Emitter Breakdown (Max)	400 V	Package	Bulk
Vce(on) (Max) @ Vge, Ic	1.25V @ 4V, 6A	Operating Temperature	-55°C ~ 175°C (TJ)
Test Condition	300V, 6.5A, 1kOhm, 5V	Mounting Type	Surface Mount
Td (on/off) @ 25°C	-/4.8µs	Input Type	Logic
Switching Energy	-	IGBT Type	-
Supplier Device Package	TO-252, (D-Pak)	Gate Charge	21 nC
Series	Automotive, AEC-Q101, EcoSPARK®	Current - Collector (Ic) (Max)	41 A
Power - Max	150 W	Base Product Number	FGD3040

Parts with Similar Specifications

The three parts on the right have similar specifications to Fairchild Semiconductor FGD3040G2-F085

Product Attribute				
Part Number	FGD3040G2-F085	FGD3040G2-F085C	FGD4536TM	FGD3040G2-F085
Manufacturer	Fairchild Semiconductor	onsemi	AMI Semiconductor / ON Semiconductor	onsemi
Base Product Number	FGD3040	FGD3040	-	FGD3040
Package	Bulk	Tape & Reel (TR)	-	Tape & Reel (TR)
Supplier Device Package	TO-252, (D-Pak)	D-PAK (TO-252)	TO-252, (D-Pak)	TO-252AA
Operating Temperature	-55°C ~ 175°C (TJ)	-55°C ~ 175°C (TJ)	-55°C ~ 150°C (TJ)	-55°C ~ 175°C (TJ)
Series	Automotive, AEC-Q101, EcoSPARK®	Automotive, AEC-Q101, EcoSPARK®	-	Automotive, AEC-Q101, EcoSPARK®
Input Type	Logic	Logic	Standard	Logic
Voltage - Collector Emitter Breakdown (Max)	400 V	400 V	360V	400 V
Td (on/off) @ 25°C	-/4.8µs	0.9µs/4.8µs	-	-/4.8µs
Vce(on) (Max) @ Vge, Ic	1.25V @ 4V, 6A	1.25V @ 4V, 6A	1.8V @ 15V, 50A	1.25V @ 4V, 6A
Switching Energy	-	-	-	-
IGBT Type	-	-	Trench	-
Gate Charge	21 nC	21 nC	47nC	21 nC
Test Condition	300V, 6.5A, 1kOhm, 5V	300V, 6.5A, 1000Ohm, 5V	-	300V, 6.5A, 1kOhm, 5V
Mounting Type	Surface Mount	Surface Mount	Surface Mount	Surface Mount
Power - Max	150 W	150 W	125W	150 W
Package / Case	TO-252-3, DPak (2 Leads + Tab), SC-63	TO-252-3, DPak (2 Leads + Tab), SC-63	TO-252-3, DPak (2 Leads + Tab), SC-63	TO-252-3, DPak (2 Leads + Tab), SC-63
Current - Collector (Ic) (Max)	41 A	41 A	-	41 A

FGD3040G2-F085 Datasheet PDF

Download FGD3040G2-F085 pdf datasheets and Fairchild Semiconductor documentation for FGD3040G2-F085 - Fairchild Semiconductor.

Datasheets

[FGD3040G2_F085.pdf](#)

Customers Also Interested in

Recommended Products

FGD3040G2-F085C onsemi ECOSPARK2 IGN-IGBT TO252	FGD4536TM AMI Semiconductor / ON Semiconductor IGBT 360V 125W DPAK	FGD3040G2-F085 onsemi IGBT 400V 41A TO252AA	FGD3040G2 onsemi IGBT 400V 41A 150W DPAK	FGD2736G3-F085 onsemi ECOSPARK3 IGN-IGBT TO252	FGD3N60LSDTM onsemi IGBT 600V 6A 40W DPAK



FGD3040G2_F085

Fairchild Semiconductor
INSULATED GATE BIPOLAR
TRANSISTO

STGW40V60DLF

STMicroelectronics
IGBT 600V 80A 283W TO247

FGD3245G2_F085

Fairchild (onsemi)

FGD3N60UNDF

onsemi
IGBT 600V 6A 60W DPAK

FGD5T120SH

onsemi
IGBT 1200V 5A FS3 DPAK

FGD3N60LSD MOS

Fairchild (onsemi)



FGD3040G2

Fairchild Semiconductor
IGBT 400V 41A 150W DPAK

FGD3245G2

Fairchild Semiconductor
IGBT 23A, 440V, N CHANNEL

FGD3N60LSD

Fairchild (onsemi)

FGD3440G2

Fairchild Semiconductor
IGBT 26.9A, 450V, N CHANNEL, DPA

FGD3N60LSDTM

Fairchild Semiconductor
INSULATED GATE BIPOLAR
TRANSISTO

FGD3440G2

onsemi
IGBT 400V 26.9A 166W DPAK

Shipment

Delivery Time

In-stock items can be shipped within 24 hours. Some parts will be arranged for delivery within 1-2 days from the date all items arrive at our warehouse. And Allelco ships order once a day at about 17:00, except Sunday. Once the goods are shipped, the estimated delivery time depends on the shipping methods and Delivery destination. The table below shows are the logistic time for some common countries.

Delivery Cost

- > Use your express account for shipment if you have one.
 - > Use our account for the shipment. Refer to the table below for the approximate charges.
- (Different time frame / countries / package size has different price.)

Delivery Method

- > Global Common Shipment by DHL / UPS / FedEx / TNT / EMS / SF we support.
- > Others more shipping ways, please get in touch with your customer manager.

Common Countries Logistic Time Reference		
Region	Country	Logistic Time(Day)
America	United States	5
	Brazil	7
Europe	Germany	5
	United Kingdom	4
	Italy	5
Oceania	Australia	6
	New Zealand	7
Asia	India	6
	Japan	7
Middle East	Israel	6

DHL & FedEx Shipment Charges Reference	
Shipment charges(KG)	Reference DHL(USD\$)
0.00kg-1.00kg	USD\$60.00
1.00kg-2.00kg	USD\$70.00
2.00kg-3.00kg	USD\$80.00

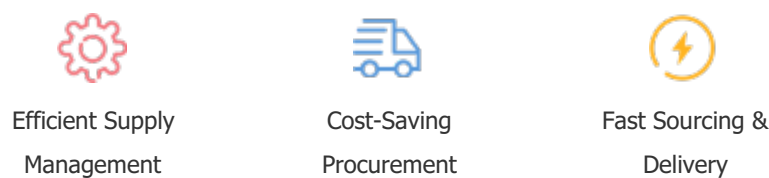
Note: The above table is for reference only. There may have some data bias for the uncontrollable factors. Contact us if you have any questions.

Payment Support

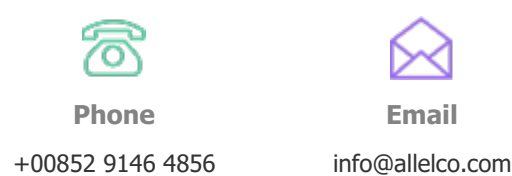
The payment method can be chosen from the methods shown below:
Wire Transfer (T/T, Bank Transfer), Western Union, Credit card, PayPal.



Your Faithful Supply Chain Partner -



Contact us if you have any questions.



Certifications & Memberships



View More



Contact us

Address: Flat/Rm C 13/F Harvard Commercial Building 105-111 Thomson Road, Wan Chai, Hong Kong
Phone: +00852 9146 4856
Fax: +00852 3010 8510
Email: info@Allelco.com