

Image may be representation.
See specifications for product details.



PCA9655EDWR2G

Manufacturer Part Number	PCA9655EDWR2G
Manufacturer	onsemi
Allelco Part Number	32D-PCA9655EDWR2G
ECAD Model	PCB Symbol, Footprint & 3D Model
Parts Description	IC XPNDR 100KHZ I2C SMBUS 24SOIC
Package	24-SOIC (0.295", 7.50mm Width)
Data sheet	PCA9655E.pdf PCA9655E.pdf
RoHs Status	ROHS3 Compliant

Get a Quote

PCA9655EDWR2G - onsemi.New Original in Stock. Download Linear Technology PCA9655EDWR2G datasheet/specifications on AllelcoElec.com.
Request a quote for PCA9655EDWR2G, please send us email: info@allelco.com

Specifications

PCA9655EDWR2G Tech Specifications
PCA9655EDWR2G - onsemi technical specifications, attributes, parameters

Product Attribute	Attribute Value	Product Attribute	Attribute Value
Manufacturer	onsemi	Number of I/O	16
Voltage - Supply	1.65V ~ 5.5V	Mounting Type	Surface Mount
Supplier Device Package	24-SOIC	Interrupt Output	Yes
Series	-	Interface	I ² C, SMBus
Package / Case	24-SOIC (0.295", 7.50mm Width)	Features	POR
Package	Tape & Reel (TR)	Current - Output Source/Sink	42mA
Output Type	Push-Pull	Clock Frequency	100 kHz
Operating Temperature	-55°C ~ 125°C	Base Product Number	PCA9655

Parts with Similar Specifications

The three parts on the right have similar specifications to onsemi PCA9655EDWR2G

Product Attribute				
Part Number	PCA9655EDWR2G	PCA9655EDTR2G	PCA9654EDR2G	PCA9655EMTTXG
Manufacturer	onsemi	onsemi	onsemi	onsemi
Operating Temperature	-55°C ~ 125°C	-55°C ~ 125°C	-55°C ~ 125°C	-55°C ~ 125°C
Voltage - Supply	1.65V ~ 5.5V	1.65V ~ 5.5V	1.65V ~ 5.5V	1.65V ~ 5.5V
Number of I/O	16	16	8	16
Supplier Device Package	24-SOIC	24-TSSOP	16-SOIC	24-QFN (4x4)
Package	Tape & Reel (TR)	Tape & Reel (TR)	Tape & Reel (TR)	Tape & Reel (TR)
Current - Output Source/Sink	42mA	42mA	-	42mA
Interface	I ² C, SMBus	I ² C, SMBus	I ² C	I ² C, SMBus
Package / Case	24-SOIC (0.295", 7.50mm Width)	24-TSSOP (0.173", 4.40mm Width)	16-SOIC (0.154", 3.90mm Width)	24-WFQFN Exposed Pad
Mounting Type	Surface Mount	Surface Mount	Surface Mount	Surface Mount
Features	POR	POR	POR	POR
Output Type	Push-Pull	Push-Pull	-	Push-Pull
Series	-	-	-	-
Base Product Number	PCA9655	PCA9655	PCA9654	PCA9655
Interrupt Output	Yes	Yes	Yes	Yes
Clock Frequency	100 kHz	100 kHz	100 kHz	100 kHz

PCA9655EDWR2G Datasheet PDF

Download PCA9655EDWR2G pdf datasheets and onsemi documentation for PCA9655EDWR2G - onsemi.

Datasheets

[PCA9655E.pdf](#)

Environmental Information

[onsemi REACH.pdf](#)

[onsemi RoHS.pdf](#)

[Material Declaration PCA9655EDWR2G.pdf](#)

HTML Datasheet

[PCA9655E.pdf](#)

Customers Also Interested in

Recommended Products



PCA9634PW

Freescale / NXP Semiconductors

PCA9641PW

Freescale / NXP Semiconductors

PCA9634PW,118

NXP USA Inc.
IC LED DRVR PS I2C 25MA 20TSSOP

PCA9665D

Freescale / NXP Semiconductors

PCA9635PW,118

NXP USA Inc.
IC LED DRVR LIN PWM 25MA 28TSSOP

PCA9655EDTR2G

onsemi
IC XPND 100KHZ I2C SMBUS 24TSSOP



PCA9654EDR2G

onsemi
IC XPNDR 100KHZ I2C 16SOIC



PCA9635PW

Freescale / NXP Semiconductors



PCA9663B

Freescale / NXP Semiconductors



PCA9646PW

Freescale / NXP Semiconductors



PCA9646D

Freescale / NXP Semiconductors



PCA9663B,118

NXP USA Inc.
IC CONTROLLER 48LQFP



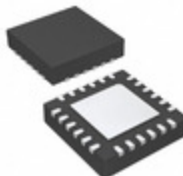
PCA9665PW

NXP USA Inc.
I2C BUS CONTROLLER



PCA9641PWJ

NXP USA Inc.
IC DEMUX 2CHAN 16TSSOP



PCA9655EMTTXG

onsemi
IC XPNDR 100KHZ I2C SMBUS 24QFN



PCA9663B/S911

Freescale / NXP Semiconductors



PCA9665PW/S911

Freescale / NXP Semiconductors



PCA9665BS

LUMILEDS

Shipment

Delivery Time

In-stock items can be shipped within 24 hours. Some parts will be arranged for delivery within 1-2 days from the date all items arrive at our warehouse. And Allelco ships order once a day at about 17:00, except Sunday. Once the goods are shipped, the estimated delivery time depends on the shipping methods and Delivery destination. The table below shows are the logistic time for some common countries.

Delivery Cost

> Use your express account for shipment if you have one.

> Use our account for the shipment. Refer to the table below for the approximate charges.

(Different time frame / countries / package size has different price.)

Delivery Method

> Global Common Shipment by DHL / UPS / FedEx / TNT / EMS / SF we support.

> Others more shipping ways, please get in touch with your customer manager.

Common Countries Logistic Time Reference		
Region	Country	Logistic Time(Day)
America	United States	5
	Brazil	7
Europe	Germany	5
	United Kingdom	4
	Italy	5
Oceania	Australia	6
	New Zealand	7
Asia	India	6
	Japan	7
Middle East	Israel	6

DHL & FedEx Shipment Charges Reference	
Shipment charges(KG)	Reference DHL(USD\$)
0.00kg-1.00kg	USD\$60.00
1.00kg-2.00kg	USD\$70.00
2.00kg-3.00kg	USD\$80.00

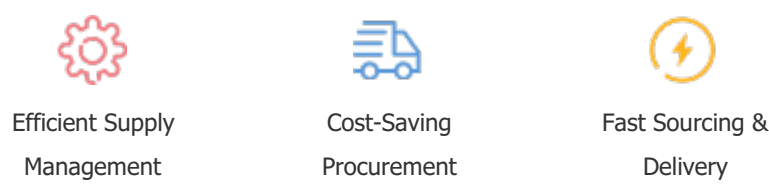
Note: The above table is for reference only. There may have some data bias for the uncontrollable factors.
Contact us if you have any questions.

Payment Support

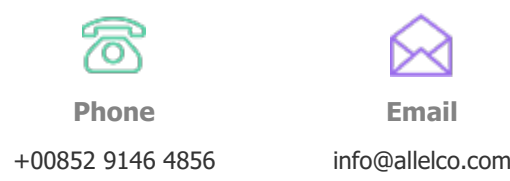
The payment method can be chosen from the methods shown below:
Wire Transfer (T/T, Bank Transfer), Western Union, Credit card, PayPal.



Your Faithful Supply Chain Partner -



Contact us if you have any questions.



Certifications & Memberships



[View More](#)