



Image may be representation.  
See specifications for product details.



## XC3S100E-4TQG144C

Manufacturer Part Number	<b>XC3S100E-4TQG144C</b>
Manufacturer	<b>AMD Xilinx</b>
Allelco Part Number	32D-XC3S100E-4TQG144C
ECAD Model	Request Free CAD Models
Parts Description	IC FPGA 108 I/O 144TQFP
Package	144-LQFP
Data sheet	XC3S100E-4TQG144C.pdf
RoHs Status	<b>ROHS3 Compliant</b>

**Get a Quote**

XC3S100E-4TQG144C - AMD.New Original in Stock. Download Linear Technology XC3S100E-4TQG144C datasheet/specifications on AllelcoElec.com.  
Request a quote for XC3S100E-4TQG144C, please send us email: [info@allelco.com](mailto:info@allelco.com)

### Specifications

XC3S100E-4TQG144C Tech Specifications

XC3S100E-4TQG144C - AMD technical specifications, attributes, parameters

Product Attribute	Attribute Value	Product Attribute	Attribute Value
Manufacturer	AMD Xilinx	Operating Temperature	0°C ~ 85°C (TJ)
Voltage - Supply	1.14V ~ 1.26V	Number of Logic Elements/Cells	2160
Total RAM Bits	73728	Number of LABs/CLBs	240
Supplier Device Package	144-TQFP (20x20)	Number of I/O	108
Series	Spartan®-3E	Number of Gates	100000
Package / Case	144-LQFP	Mounting Type	Surface Mount
Package	Tray	Base Product Number	XC3S100

### Parts with Similar Specifications

The three parts on the right have similar specifications to AMD XC3S100E-4TQG144C

Product Attribute				
Part Number	XC3S100E-4TQG144C	<b>XC3S100E-5CPG132C</b>	<b>XC3S1200E-4FG320I</b>	<b>XC3S100E-4TQG144C</b>
Manufacturer	AMD	Xilinx	AMD	AMD
Package	Tray	-	Tray	Bulk
Total RAM Bits	73728	73728	516096	73728
Number of Logic Elements/Cells	2160	2160	19512	2160
Mounting Type	Surface Mount	Surface Mount	Surface Mount	Surface Mount
Number of Gates	100000	100000	1200000	100000
Package / Case	144-LQFP	132-TFBGA, CSPBGA	320-BGA	144-LQFP
Base Product Number	XC3S100	-	XC3S1200	XC3S100
Operating Temperature	0°C ~ 85°C (TJ)	0°C ~ 85°C (TJ)	-40°C ~ 100°C (TJ)	0°C ~ 85°C (TJ)
Number of I/O	108	83	250	108
Number of LABs/CLBs	240	240	2168	240
Supplier Device Package	144-TQFP (20x20)	132-CSPBGA (8x8)	320-FBGA (19x19)	144-TQFP (20x20)
Series	Spartan®-3E	Spartan®-3E	Spartan®-3E	Spartan®-3E
Voltage - Supply	1.14V ~ 1.26V	1.14 V ~ 1.26 V	1.14V ~ 1.26V	1.14V ~ 1.26V

### XC3S100E-4TQG144C Datasheet PDF

Download XC3S100E-4TQG144C pdf datasheets and AMD documentation for XC3S100E-4TQG144C - AMD.

#### PCN Assembly/Origin

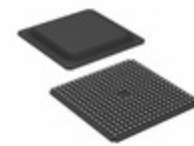
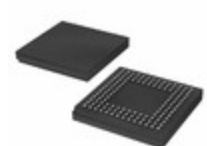
[Mult Dev LeadFrame Chg 29/Oct/2018.pdf](#)

#### Environmental Information

[Xilinx REACH211 Cert.pdf](#)

### Customers Also Interested in

#### Recommended Products



**XC3S100E-5CPG132C**

**XC3S1000L-4FT256C**

**XC3S1000-5FGG456I**

**XC3S1200E-4FG320I**

**XC3S100E-4TQG144C**

**XC3S1000-5FT256C**

Xilinx  
IC FPGA 83 I/O 132CSBGA

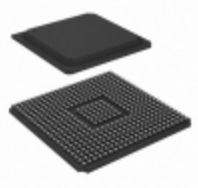
AMD Xilinx

AMD Xilinx

AMD  
IC FPGA 250 I/O 320FBGA

AMD  
IC FPGA 108 I/O 144TQFP

AMD  
IC FPGA 173 I/O 256FTBGA



**XC3S1000-5FGG456C**  
AMD  
IC FPGA 333 I/O 456FBGA

**XC3S100E-5TQG1**  
AMD Xilinx

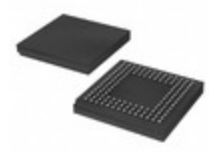


**XC3S1000-5FTG256C**  
AMD  
IC FPGA 173 I/O 256FTBGA



**XC3S100E-4VQG100C**  
AMD  
IC FPGA 66 I/O 100VQFP

**XC3S100E-4TQ144CES**  
AMD Xilinx

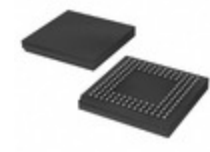


**XC3S100E-4CPG132I**  
AMD  
IC FPGA 83 I/O 132CSBGA



**XC3S100E-5TQG144C**  
AMD  
IC FPGA 108 I/O 144TQFP

**XC3S1200E-4FG400C**  
AMD  
IC FPGA 304 I/O 400FBGA



**XC3S100E-4CPG132C**  
AMD  
IC FPGA 83 I/O 132CSBGA



**XC3S100E-4VQG100I**  
AMD  
IC FPGA 66 I/O 100VQFP



**XC3S100E-4TQ144I**  
AMD  
IC FPGA 108 I/O 144TQFP



**XC3S100E-4TQG144I**  
AMD  
IC FPGA 108 I/O 144TQFP

## Shipment

### Delivery Time

In-stock items can be shipped within 24 hours. Some parts will be arranged for delivery within 1-2 days from the date all items arrive at our warehouse. And Allelco ships order once a day at about 17:00, except Sunday. Once the goods are shipped, the estimated delivery time depends on the shipping methods and Delivery destination. The table below shows are the logistic time for some common countries.

### Delivery Cost

> Use your express account for shipment if you have one.

> Use our account for the shipment. Refer to the table below for the approximate charges.

(Different time frame / countries / package size has different price.)

### Delivery Method

> Global Common Shipment by DHL / UPS / FedEx / TNT / EMS / SF we support.

> Others more shipping ways, please get in touch with your customer manager.

Common Countries Logistic Time Reference		
Region	Country	Logistic Time(Day)
America	United States	5
	Brazil	7
Europe	Germany	5
	United Kingdom	4
	Italy	5
Oceania	Australia	6
	New Zealand	7
Asia	India	6
	Japan	7
Middle East	Israel	6

DHL & FedEx Shipment Charges Reference	
Shipment charges(KG)	Reference DHL(USD\$)
0.00kg-1.00kg	USD\$60.00
1.00kg-2.00kg	USD\$70.00
2.00kg-3.00kg	USD\$80.00

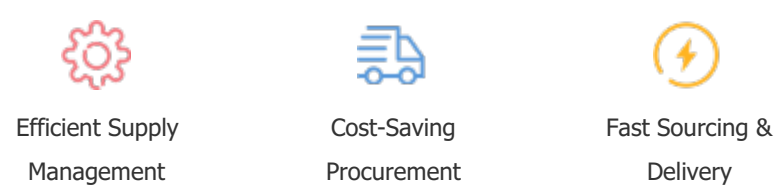
Note: The above table is for reference only. There may have some data bias for the uncontrollable factors.  
Contact us if you have any questions.

## Payment Support

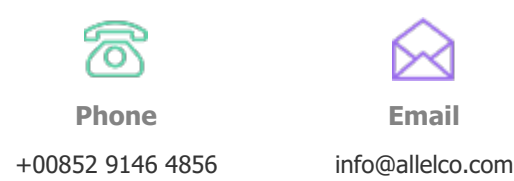
The payment method can be chosen from the methods shown below:  
Wire Transfer (T/T, Bank Transfer), Western Union, Credit card, PayPal.



## Your Faithful Supply Chain Partner -



Contact us if you have any questions.



## Certifications & Memberships



[View More](#)



## Contact us

Address: Flat/Rm C 13/F Harvard Commercial Building 105-111 Thomson Road, Wan Chai, Hong Kong

Phone: +00852 9146 4856

Fax: +00852 3010 8510

Email: info@Allelco.com

Copyright © 2012-2023 AllelcoElec.com. All rights reserved.