

Image may be representation.
See specifications for product details.



NIS5132MN2TXG

| | |
|--------------------------|--|
| Manufacturer Part Number | NIS5132MN2TXG |
| Manufacturer | onsemi |
| Allelco Part Number | 32D-NIS5132MN2TXG |
| ECAD Model | PCB Symbol, Footprint & 3D Model |
| Parts Description | IC ELECTRONIC FUSE 10DFN |
| Package | 10-VDFN Exposed Pad |
| Data sheet | Cylindrical Battery Holders.pdf |
| | NIS5132 Series.pdf |
| RoHs Status | ROHS3 Compliant |

Get a Quote

NIS5132MN2TXG - onsemi.New Original in Stock. Download Linear Technology NIS5132MN2TXG datasheet/specifications on AllelcoElec.com.
Request a quote for NIS5132MN2TXG, please send us email: info@allelco.com

Specifications

NIS5132MN2TXG Tech Specifications

NIS5132MN2TXG - onsemi technical specifications, attributes, parameters

| Product Attribute | Attribute Value | Product Attribute | Attribute Value |
|-------------------------|---------------------|-----------------------|-----------------|
| Manufacturer | onsemi | Operating Temperature | -40°C ~ 150°C |
| Voltage - Input | 9V ~ 18V | Mounting Type | Surface Mount |
| Supplier Device Package | 10-DFN (3x3) | Function | Electronic Fuse |
| Series | - | Current - Output | 3.6A |
| Sensing Method | High-Side | Base Product Number | NIS5132 |
| Package / Case | 10-VDFN Exposed Pad | Accuracy | - |
| Package | Tape & Reel (TR) | | |

Parts with Similar Specifications

The three parts on the right have similar specifications to onsemi NIS5132MN2TXG

| Product Attribute | | | | |
|-------------------------|---------------------|----------------------|----------------------|----------------------|
| Part Number | NIS5132MN2TXG | NIS5135MN2TXG | NIS5820MT1TXG | NIS5135MN1TXG |
| Manufacturer | onsemi | onsemi | onsemi | onsemi |
| Series | - | - | - | - |
| Operating Temperature | -40°C ~ 150°C | -40°C ~ 150°C | -40°C ~ 150°C | -40°C ~ 150°C |
| Package / Case | 10-VDFN Exposed Pad | 10-VDFN Exposed Pad | 10-WDFN Exposed Pad | 10-VDFN Exposed Pad |
| Accuracy | - | - | - | - |
| Voltage - Input | 9V ~ 18V | 3.1V ~ 18V | 18V | 3.1V ~ 18V |
| Package | Tape & Reel (TR) | Tape & Reel (TR) | Tape & Reel (TR) | Tape & Reel (TR) |
| Base Product Number | NIS5132 | NIS5135 | NIS5820 | NIS5135 |
| Supplier Device Package | 10-DFN (3x3) | 10-DFN (3x3) | 10-WDFN (3x3) | 10-DFN (3x3) |
| Function | Electronic Fuse | Electronic Fuse | Electronic Fuse | Electronic Fuse |
| Current - Output | 3.6A | 3.6A | 8A | 3.6A |
| Sensing Method | High-Side | High-Side | - | High-Side |
| Mounting Type | Surface Mount | Surface Mount | Surface Mount | Surface Mount |

NIS5132MN2TXG Datasheet PDF

Download NIS5132MN2TXG pdf datasheets and onsemi documentation for NIS5132MN2TXG - onsemi.

Datasheets

[Cylindrical Battery Holders.pdf](#)

Environmental Information

[onsemi RoHS.pdf](#)

[onsemi REACH.pdf](#)

[Material Declaration NIS5132MN2TXG.pdf](#)

PCN Packaging

[Covering Tape/Material Chg 20/May/2016.pdf](#)

[Top Marking Update 01/Aug/2014.pdf](#)

HTML Datasheet

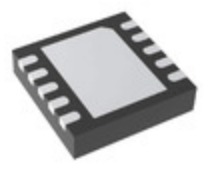
[NIS5132 Series.pdf](#)

PCN Design/Specification

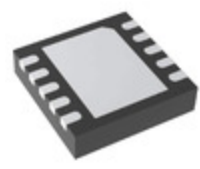
[Cylindrical Battery Holders.pdf](#)

Customers Also Interested in

Recommended Products



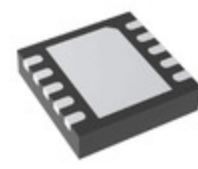
NIS5135MN2TXG
onsemi
IC ELECTRONIC FUSE 10DFN



NIS5820MT1TXG
onsemi
IC ELECTRONIC FUSE 10WDFN



NIS5112D2R2
AMI Semiconductor/onsemi



NIS5135MN1TXG
onsemi
IC ELECTRONIC FUSE 10DFN



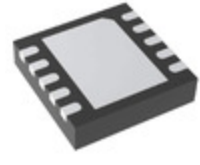
NIS5112D2R
AMI Semiconductor/onsemi



NIS5102QP2HT1G
onsemi
IC HOT SWAP CTRLR GP 12PLL



NIS5112D2R2G
onsemi
IC ELECTRONIC FUSE 8SOIC



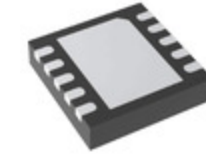
NIS5431MT1TXG
onsemi
IC ELECTRONIC FUSE 10WDFN



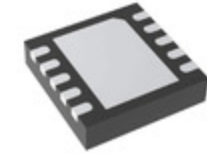
NIS5102QP1H
AMI Semiconductor/onsemi



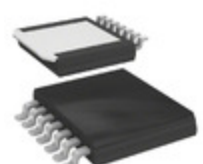
NIS5452MT1TXG
onsemi
IC ELECTRONIC FUSE 10WDFN



NIS5132MN1TXG
onsemi
IC ELECTRONIC FUSE 10DFN



NIS5232MN1TXG
onsemi
IC ELECTRONIC FUSE 10DFN



NIS5101E2T1G
onsemi
IC HOT SWAP CTRLR -48V SPAK-7



NIS5132MN1-FN-7
Diodes Incorporated
IC ELECTRONIC FUSE 10UDFN



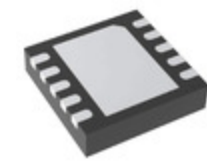
NIS5101E2
AMI Semiconductor/onsemi



NIS5135MN1-FN-7
Diodes Incorporated
IC ELECTRONIC FUSE 10UDFN



NIS5112D1R2G
onsemi
IC ELECTRONIC FUSE 8SOIC



NIS5132MN3TXG
onsemi
IC ELECTRONIC FUSE 10DFN

Shipment

Delivery Time

In-stock items can be shipped within 24 hours. Some parts will be arranged for delivery within 1-2 days from the date all items arrive at our warehouse. And Allelco ships order once a day at about 17:00, except Sunday. Once the goods are shipped, the estimated delivery time depends on the shipping methods and Delivery destination. The table below shows are the logistic time for some common countries.

Delivery Cost

- > Use your express account for shipment if you have one.
- > Use our account for the shipment. Refer to the table below for the approximate charges.
(Different time frame / countries / package size has different price.)

Delivery Method

- > Global Common Shipment by DHL / UPS / FedEx / TNT / EMS / SF we support.
- > Others more shipping ways, please get in touch with your customer manager.

| Common Countries Logistic Time Reference | | |
|--|----------------|--------------------|
| Region | Country | Logistic Time(Day) |
| America | United States | 5 |
| | Brazil | 7 |
| Europe | Germany | 5 |
| | United Kingdom | 4 |
| | Italy | 5 |
| Oceania | Australia | 6 |
| | New Zealand | 7 |
| Asia | India | 6 |
| | Japan | 7 |
| Middle East | Israel | 6 |

| DHL & FedEx Shipment Charges Reference | |
|--|----------------------|
| Shipment charges(KG) | Reference DHL(USD\$) |
| 0.00kg-1.00kg | USD\$60.00 |
| 1.00kg-2.00kg | USD\$70.00 |
| 2.00kg-3.00kg | USD\$80.00 |

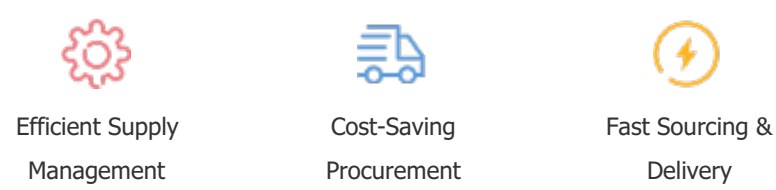
Note: The above table is for reference only. There may have some data bias for the uncontrollable factors.
Contact us if you have any questions.

Payment Support

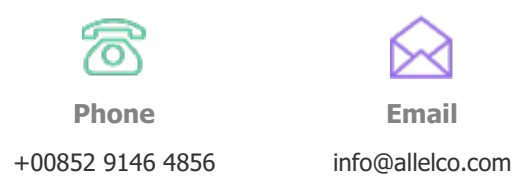
The payment method can be chosen from the methods shown below:
Wire Transfer (T/T, Bank Transfer), Western Union, Credit card, PayPal.



Your Faithful Supply Chain Partner -



Contact us if you have any questions.



Certifications & Memberships



[View More](#)